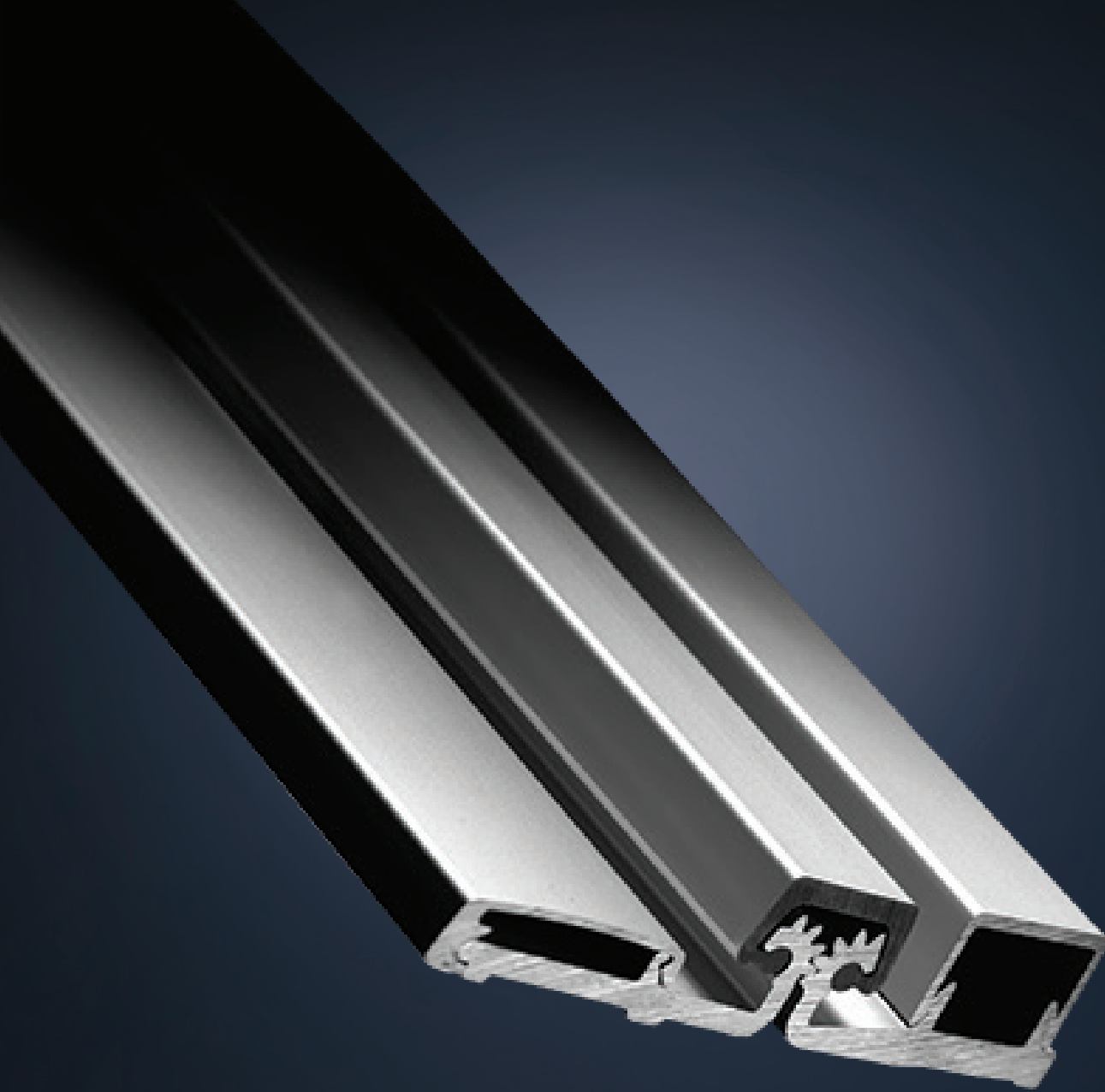


Roton[®] Continuous Geared Hinge



The Original. *Better.*



TRADITION

• Lifetime Warranty

Hager Companies believes in our product line and warrants our Roton® Aluminium Continuous Geared Hinges for the lifetime of the opening.

• Proudly Made in the USA

• Friction Free

Roton® Continuous Geared Aluminum Hinges are lubricated to eliminate the need for any assistance in maintaining a quiet performance.

• Fire-Rated Bearings®

To ease the ordering process of our Roton® Continuous Geared Aluminium Hinge, we provide fire-rated bearings on all hinges with no additional charge. The UL stamp denotes the hinge is fire-rated.

• Fire-Rated Up to 3-Hours

• Standard Duty, Heavy Duty, and Extra Heavy Duty Models Available

• Custom Length, Finishes, and Hole Locations Available

• Meets LEED® Requirements

The Original

Hager Companies has been manufacturing the original Roton® Continuous Geared Aluminium Hinge for over 28 years. The unique design of Roton® consists of three important parts: an internal rolling contact gear profile, a high strength cover channel, and solid bearings made of Celanex®. Working together, these parts evenly distribute door weight and maintain door alignment for superior performance.

#1 Concurrent Bearing Slots

Simultaneously milled bearing slots provide the perfect cradle for our bearings. Our improved manufacturing process precisely mills both bearing slots with consistent and measurable accuracy allowing our bearings to seat perfectly, providing smooth operation across the entire hinge for the life of the opening.

#2 Anodized In-House

Anodizing the Roton® Continuous Geared Hinge in our own facility in Montgomery, Alabama provides the consistency and flexibility needed to lead in today's market. We anodize the complete hinge including both leaves and the cover channel simultaneously, providing unmatched color consistency across the entire hinge.

#3 Straight Line Hole Pattern

Advances in manufacturing have allowed Hager to continue the tradition the Roton® Continuous Geared Hinge has provided for over 25 years. With enhanced equipment, improved tolerances and a new hole pattern we are positioned to provide the quality and lead times to meet today's market needs.

Finishes

Clear



Dark Bronze



Gold

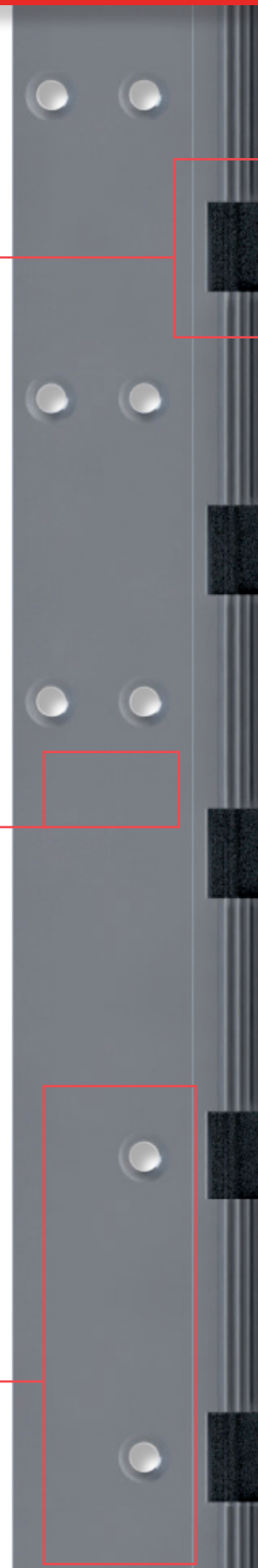


Black



Custom colors available.

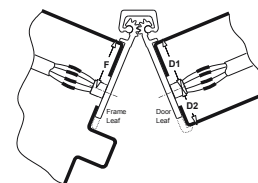
For a complete list of finish options, go to page 2 in our 2016 Roton® Catalog.



Hinge Modifications and Options

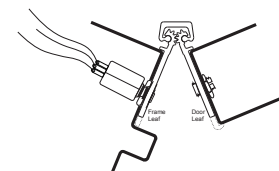
Concealed Electric Through-Wire and Monitoring

This combines continuous electric conductors and a miniature switch to provide both power transfer and monitoring.
Also available on Full Surface models.



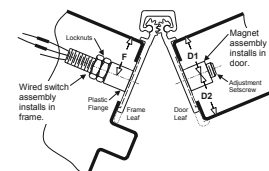
Exposed Electric Switches

Miniature push button switch is incorporated in the hinge frame leaf to monitor position of the door.



Concealed Electric Monitoring

Miniature switch is incorporated into the frame leaf.



EPT 2 or EPT 10 Electric Power Transfer Preparation

Hinge leaf cutout to accommodate power transfer device.



Removable Electric Through-Wire

Transfers power discreetly from building to door hardware.
Also available on Full Surface models.



Bearing at Top

This application allows for the bearing to be set at the very top of the cover channel. The cover channel is flush with the top of the geared hinge, preventing any obstructions or debris to be inserted in the top channel.

Hospital Tip

These are ideal for use in hospitals and correctional facilities to help provide a clean and safe environment. Please consult your local representative or customer service department for available models.

Tamper Resistant Hinge

This application is intended for use in hospital psychiatric areas and places of high security. The hinge is prepared with a hospital tip (concealed models only) and every other bearing is supplied with a set screw to lock against the inside of the cover channel for additional security.

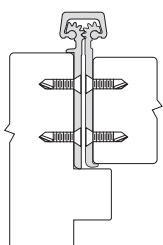
Dutch Door Hinges

Hager Companies will prepare any of our hinge models for a dutch door application. The frame leaf is furnished as a continuous extrusion and the door leaf is cut to fit the dutch door height specified. Hanging, overall net door height, amount of clearance between the top and bottom doors, their individual heights and door and frame materials should be clearly specified.

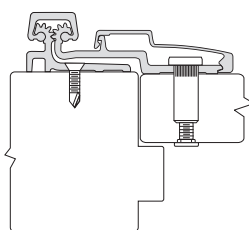
Process for Choosing the Correct Roton® Model

Determine	Select
Door and frame application (flush door and frame, inset door, door thickness, door height, etc.)	Roton® model
Frequency of door cycling and weight of door	Light, standard, heavy or extra heavy duty, lead lined
Door and frame material	Fasteners
Door opening finish	Roton® finish
Fire rating requirements, if needed	With stud or without stud

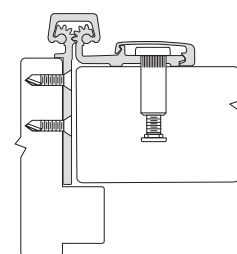
Concealed



Full Surface



Half Surface



Frequency	Load
Low frequency interior doors	20 lbs. per bearing
Low frequency, very heavy doors (lead lined x-ray doors, ballistics doors, high security doors) with double rows of fasteners	30 lbs. per bearing
Medium frequency interior doors	15 lbs. per bearing
Medium frequency exterior doors	10 lbs. per bearing
High frequency exterior doors	7.5 lbs. per bearing
Very high frequency doors	5 lbs. per bearing

Roton Continuous Hinges

Hager's Roton® Continuous Geared Hinges provide superior performance you can rely on in high-traffic areas. Our Roton® hinges use unique gears designed to minimize lateral wear on the hinges while evenly distributing door weight along the full length of the frame. Roton® hinges are ideal for new construction and retrofit applications and are offered in light, standard and heavy duty weights as well as full surface, half surface and concealed.