

REV

DESCRIPTION

DATE

FIG 1

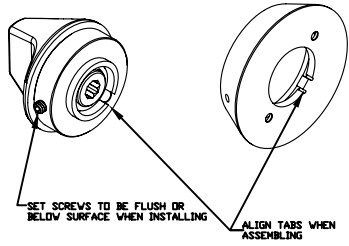
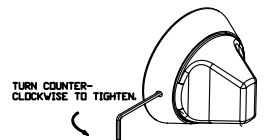
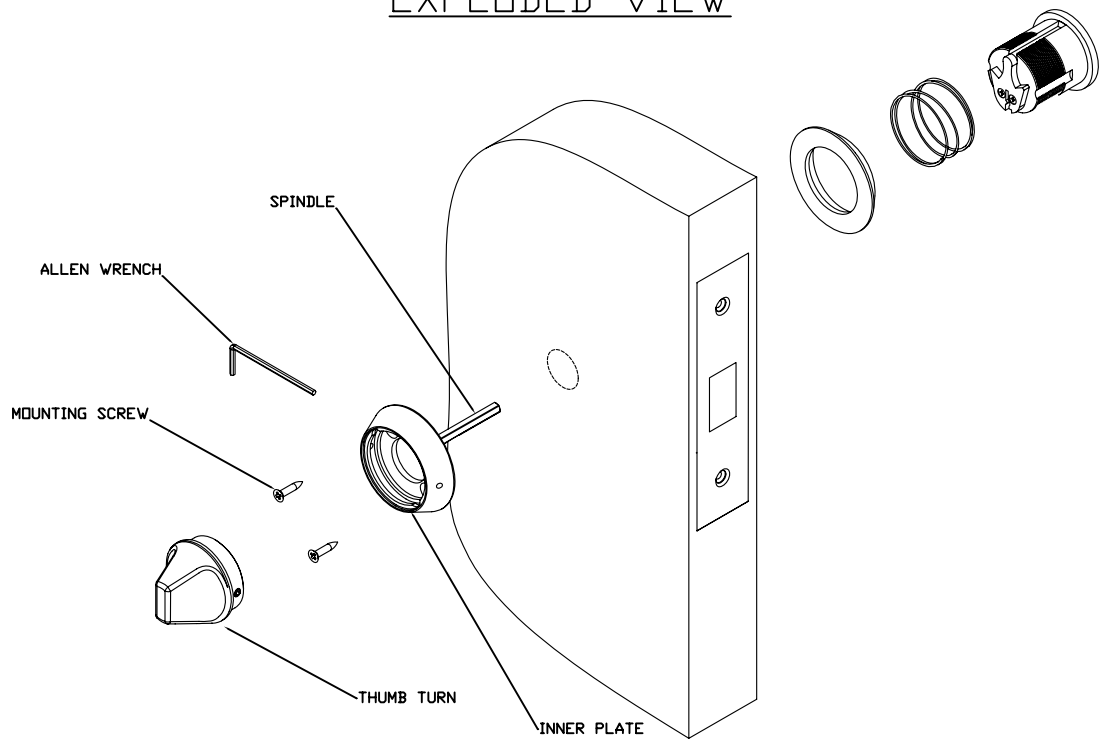


FIG 2

TO BOTH HOLES IN THE ROSE, PLACE A 5/64TH ALLEN WRENCH PROVIDED IN THE SET SCREW THROUGH THE HOLE IN INNER PLATE AND SECURE THE THUMB TURN BY TURNING COUNTER-CLOCKWISE (TO REMOVE ROTATE CLOCKWISE).



EXPLODED VIEW



HOSPITAL THUMB TURN INSTRUCTIONS

1. PREPARE DOOR PER TEMPLATE.
2. CENTER INNER PLATE OVER DOOR HOLE AND LINE UP WITH THE CENTER OF THE HUB FOR THE THUMB TURN. RECOMMEND THAT THE THUMB TURN AND SPINDLE BE INSTALLED TO AID LINING UP WITH THE HUB.
3. HOLD INNER PLATE ONTO THE DOOR AND REMOVE THE THUMB TURN AND SPINDLE. HOLDING THE INNER PLATE IN POSITION MARK LOCATION FOR 2 SMALL PILOT HOLES FOR #6 SCREWS.
4. MOUNT THE INNER PLATE WITH THE 2 SCREWS..
5. INSTALL THE SPINDLE AND THUMB TURN.
6. OPERATE THE LOCK TO ENSURE PROPER INSTALLATION AND ALIGNMENT.
7. TIGHTEN THE THUMB TURN ONTO THE ASSEMBLY- SEE FIG 1 & 2. INSERT THE ALLEN WRENCH THROUGH EACH HOLE (2 IN EACH INNER PLATE) TO ENGAGE THE SET SCREW AND SECURE THE THUMB TURN ASSEMBLY. ROTATE COUNTERCLOCKWISE TO TIGHTEN IN THE ASSEMBLY AND ROTATE CLOCKWISE TO LOOSEN. SEE FIG 1 & 2.
8. CHECK LOCK FOR CORRECT OPERATION BEFORE CLOSING THE DOOR.

<p style="font-size: 24pt; font-weight: bold;">TownSteel</p> <p>707 N. BARRANCA AVE #6 COVINA, CALIF 91723</p>	DRAFT UNLESS OTHERWISE SPECIFIED: 1" MAX	B	TOLERANCES UNLESS OTHERWISE SPECIFIED: X.X (METRIC) =±0.4 X.XX (METRIC) =±0.15 FRACTIONS = ±.8 ANGLES = ±1/2° ● .12	MATERIAL: NOTED
	DRAWN BY: SC		● MACHINED SURFACES 125/	HEAT TREAT: NA
	DATE: 3/16/09		⊕ THIRD ANGLE	TITLE: HOSPITAL THUMB TURN ASSY INSTRUCTIONS
				PART#: HKB-TTURN

THIS DRAWING AND THE INFORMATION CONTAINED THEREON OR DERIVED THEREFROM ARE THE CONFIDENTIAL PROPERTY OF TOWNSTEEL, INC. IT IS NOT TO BE REPRODUCED, OR DISCLOSED TO OTHERS, AND MAY BE USED ONLY FOR THE PURPOSE OF ENABLING THE PARTY TO WHOM IT HAS BEEN LOANED TO QUOTE OR FILL AN ORDER FOR TOWNSTEEL, INC., OR AS MAY BE OTHERWISE AUTHORIZED BY TOWNSTEEL, INC. IN WRITING.

FIG 1

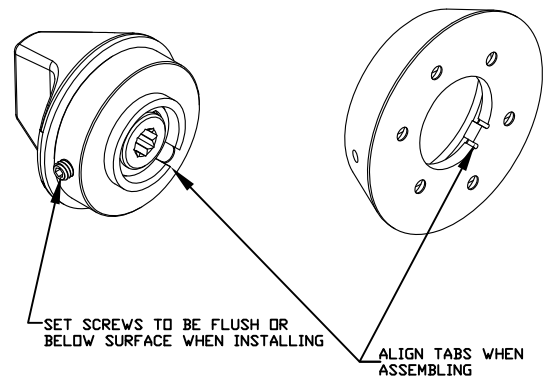
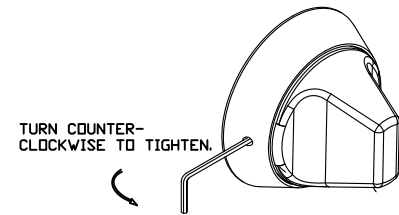


FIG 2

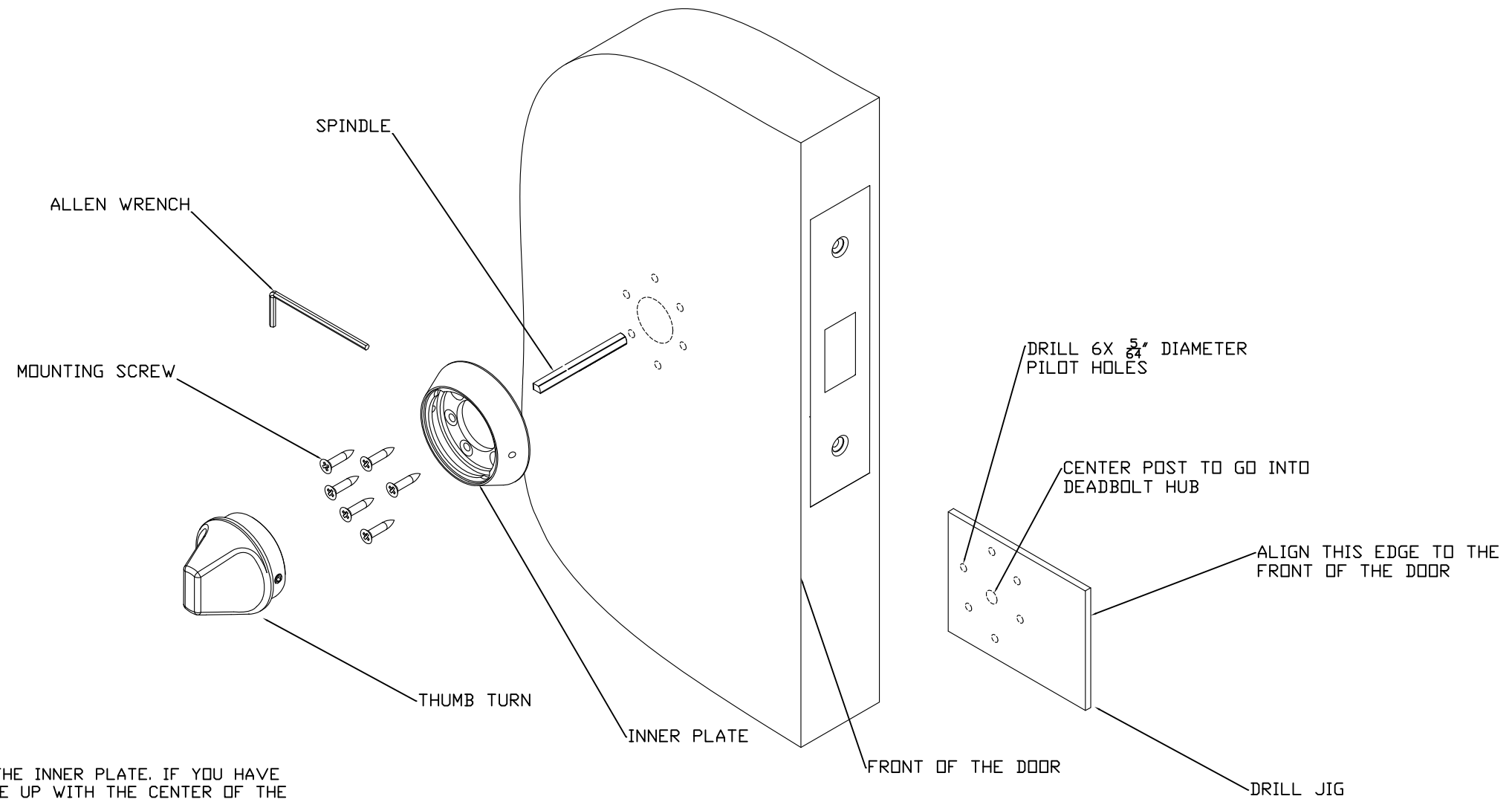
TO BOTH HOLES IN THE ROSE, PLACE A 5/64TH ALLEN WRENCH PROVIDED IN THE SET SCREW THROUGH THE HOLE IN INNER PLATE AND SECURE THE THUMB TURN BY TURNING COUNTER-CLOCKWISE (TO REMOVE ROTATE CLOCKWISE).



HOSPITAL THUMB TURN INSTRUCTIONS

1. PREPARE DOOR PER TEMPLATE.
2. USE THE SMALL DRILL JUG TO DRILL THE 6 HOLES TO MOUNT THE INNER PLATE. IF YOU HAVE NO DRILL JIG- CENTER INNER PLATE OVER DOOR HOLE AND LINE UP WITH THE CENTER OF THE HUB FOR THE THUMB TURN. RECOMMEND THAT THE THUMB TURN AND SPINDLE BE INSTALLED TO AID LINING UP WITH THE HUB.
3. IF YOU HAVE NO DRILL JIG- HOLD INNER PLATE ONTO THE DOOR AND REMOVE THE THUMB TURN AND SPINDLE. HOLDING THE INNER PLATE IN POSITION MARK LOCATION FOR 6 SMALL PILOT HOLES FOR #6 SCREWS.
4. MOUNT THE INNER PLATE WITH THE 6 SCREWS.
5. INSTALL THE SPINDLE AND THUMB TURN.
6. OPERATE THE LOCK TO ENSURE PROPER INSTALLATION AND ALIGNMENT.
7. TIGHTEN THE THUMB TURN ONTO THE ASSEMBLY- SEE FIG 1 & 2. INSERT THE ALLEN WRENCH THROUGH EACH HOLE (2 IN EACH INNER PLATE) TO ENGAGE THE SET SCREW AND SECURE THE THUMB TURN ASSEMBLY. ROTATE COUNTERCLOCKWISE TO TIGHTEN IN THE ASSEMBLY AND ROTATE CLOCKWISE TO LOOSEN. SEE FIG 1 & 2.
8. CHECK LOCK FOR CORRECT OPERATION BEFORE CLOSING THE DOOR.

EXPLODED VIEW



<p style="font-size: 24pt; margin: 0;">TownSteel</p> <p style="margin: 0;">707 N. BARRANCA AVE #6 COVINA, CALIF 91723</p>	DRAFT UNLESS OTHERWISE SPECIFIED: 1° MAX	B	TOLERANCES UNLESS OTHERWISE SPECIFIED: X.X (METRIC) = ±0.4 X.XX (METRIC) = ±0.15 FRACTIONS = ±.8 ANGLES = ±1/2° © .12 MACHINED SURFACES 125/	MATERIAL: NOTED
	DRAWN BY: SC			HEAT TREAT: NA
	DATE: 10/19/12		THIRD ANGLE	FINISH: 32D
				TITLE: RX T-TURN, ASSY, INSTRUCTIONS
				PART#: RX T-TURN

THIS DRAWING AND THE INFORMATION CONTAINED THEREON OR DERIVED THEREFROM ARE THE CONFIDENTIAL PROPERTY OF TOWNSTEEL, INC. IT IS NOT TO BE REPRODUCED, OR DISCLOSED TO OTHERS, AND MAY BE USED ONLY FOR THE PURPOSE OF ENABLING THE PARTY TO WHOM IT HAS BEEN LOANED TO QUOTE ON OR FILL AN ORDER FOR TOWNSTEEL, INC., OR AS MAY BE OTHERWISE AUTHORIZED BY TOWNSTEEL, INC. IN WRITING.