

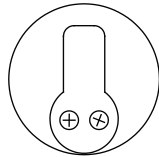
# EAX<sup>®</sup> EXIT ALARMS

## EAX-300

### Battery Powered Door Propped Alarm

The Detex EAX-300 Series is designed for applications where doors may be used for egress or ingress, but may not be held or propped open. Door open times from 1 second to 4 minutes (15 second default) are field selectable. The smaller size makes installation quick and easy.

Shown with mortise cylinder  
(cylinder sold separately)



### Benefits

- Low cost, solution to propped open doors
- Helps keep energy costs down by ensuring doors are closed
- Alarm silences when door is closed, no waiting for key-holder to arrive
- Quick, easy installation saves time and money

### Features

- Secure, tamper resistant housing
- Patented plastic template assures accurate installation by providing foolproof alignment with internal magnetic door contact
- Tapered cover allows for installation on narrow stile doors
- Intelligent circuit senses the external magnet location automatically and sets the correct door handing
- 100 dB piezo alarm
- 9VDC battery operated with Low Battery Alert
- LED visual arming indicators

### Mechanical Options

- EAX-300 may be ordered in several kit configurations:
  - SK1 Kit allows for wall mounting and includes (1) white MS-1039S door contact
  - SK2 Kit allows for wall mounting and includes (2) white MS-1039S door contacts
  - SK3 Kit allows for wall mounting and includes (1) brown MS-1059S door contact
  - SK4 Kit allows for wall mounting and includes (2) brown MS-1059S door contacts
  - SK5 Kit allows for wall mounting and includes (1) grey MS-2049S door contact
  - SK6 Kit allows for wall mounting and includes (2) grey MS-2049S door contacts
- KS - Key Stop, factory installed
- SI - Status Indicator On

## Electrical Options

- Weatherized for use on gates or doors that are subjected to inclement weather

## Accessories

- MC65 - Mortise Cylinder
- IC7 - 7 pin IC Cylinder Housing
- IK7 - Cylinder InstaKey Housing

## Technical Information

- Machine and self-drilling screws
- Optional Cylinder Nut Wrench  
P/N: 103779

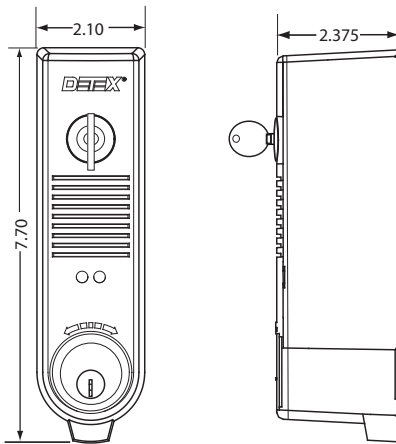


## Finishes

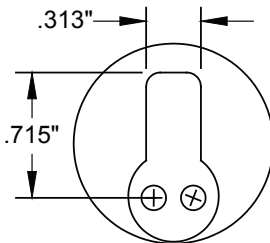
- GY - Grey
- BK - Black

## Dimensions

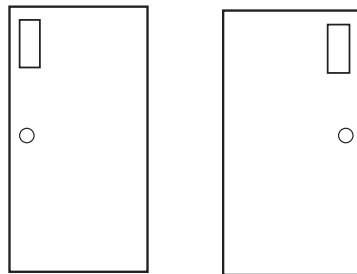
Front and Side View



Mortise  
Cylinder  
(sold  
separately) -  
dimensions  
approximate

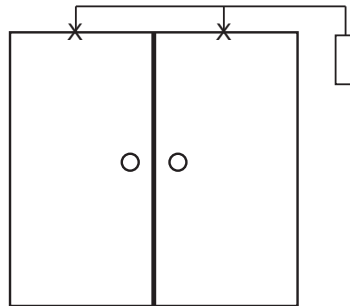


## Riser Diagram



Left-side mounting

Right-side mounting



Door switch actuated

## Listings and Approvals



UL Listed Miscellaneous Fire  
Door Accessory



ANSI/BHMA A156.29

## Detex Limited Warranty

3 Year Limited Manufacturer's  
Warranty

Where Trust is Built™

# DETEX®

Life Safety, Security and Security Assurance

Detex Corporation  
302 Detex Drive  
New Braunfels, Texas 78130-3045 USA

PH. (830) 629-2900

(800) 729-3839

FAX (800) 653-3839

<http://www.detex.com>

USA Sales:

[marketing@detex.com](mailto:marketing@detex.com)

International Sales:

[export@detex.com](mailto:export@detex.com)