

5

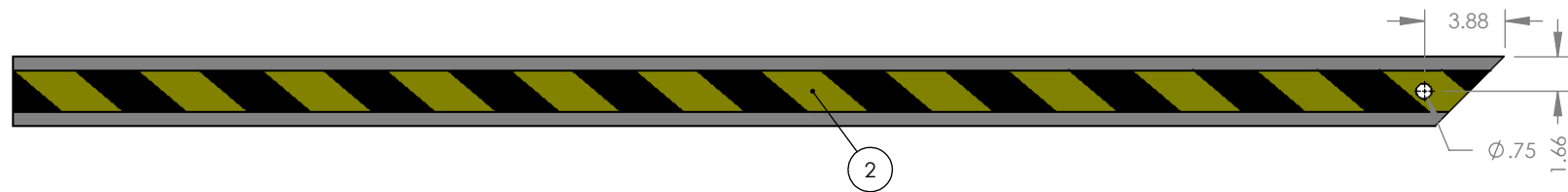
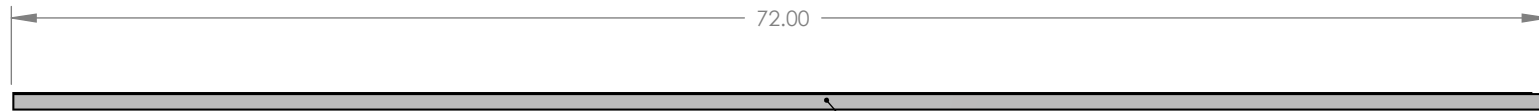
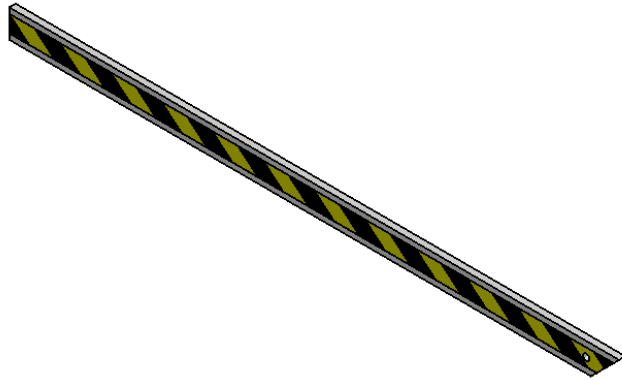
4

3

2

1

REVISIONS			
REV	DESCRIPTION	DATE	APPR
B	Revised & Redrawn on SolidWorks.	Sal 11/06/08	D.C. 11/06/08



ITEM	PART NUMBER	DESCRIPTION	QTY
1	1601-148	Wood Arm 14ft Painted	1
2	2600-777	Tape-Tel/Blk Vinyl 2 x 36yd	0.1 Roll

**PROPRIETARY AND CONFIDENTIAL**

THE INFORMATION CONTAINED IN THIS DRAWING IS THE SOLE PROPERTY OF DOOR KING. ANY REPRODUCTION IN PART OR AS A WHOLE WITHOUT THE WRITTEN PERMISSION OF DOOR KING IS PROHIBITED.

UNLESS OTHERWISE SPECIFIED:  
DIMENSIONS ARE IN INCHES  
TOLERANCES:  
ANGULAR: 1°  
XX.X ± 0.060  
XXX.X ± 0.007

INTERPRET GEOMETRICTOLERANCING PER:  
DO NOT SCALE DRAWING



TITLE:  
**Arm Wood Folding Open End Assy**

SIZE <b>A</b>	DWG <b>1601-118</b>	REV <b>B</b>
------------------	------------------------	-----------------

SCALE: 1:24 SHEET 1 OF 1

Notes: Unless Otherwise Specified.

5

4

3

2

1