

I. Introduction

WEBS-PM Pedestal Mount Emergency Phone Station with WEBS® is designed to mount to concrete foundation using anchor bolts.

II. Contents

Before beginning installation, make sure you have all the included components. Each Pedestal consists of three packages. Package #1 is the labeled **WEBS-PM-KIT**. Package #2 is labeled **ETP-PM PARTS**. Package #3 contains the Pedestal itself.

WEBS-PM-KIT

Qty.	Part Number	Description
1	68642	2-Channel Amplifier
1	86396	Power Supply (12VDC, 5A)
2	83075	Loudspeaker

ETP-PM PARTS

Qty.	Part Number	Description
4	42838	J-Bolts
8	42839	3/4"-10 Hex Nut
8	42840	3/4" Washer
3	42867	10-24 x 1/2" Tamper Resistant Screws
2	42843	6-32 Hex Nut
1	68590	LED Panel Light (12-24VAC/DC, 120VAC)
1	67478	Polycarbonate Cover for LED Panel Light
1	24717	Pedestal Mount Aluminum Template

III. Installation

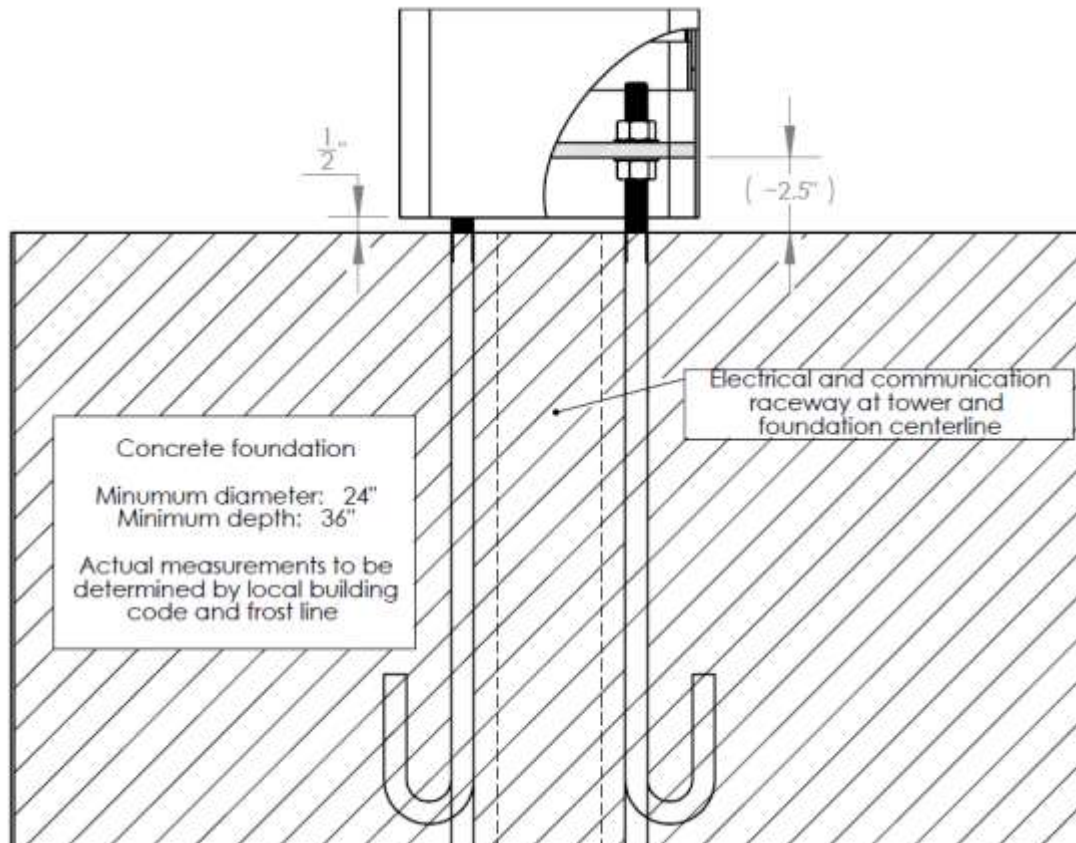
1. Electrical and telephone line conduits should be run through the foundation and into the center 4" diameter hole of the Pedestal.



NOTE: To insure proper grounding of all electrical components, the tower mount should be effectively earth grounded from the grounding stud (located across from the lower access panel) with 6 AWG or better insulated, stranded copper wire to the metallic power service raceway (conduit) or an 8 foot or longer corrosion-resistant ground spike. It is the installer's obligation to ensure compliance with all national, regional, and local regulations.

2. Pour the foundation at least 2-feet in diameter and 3-feet deep according to your local code and frost line.
3. Install the four (4) 3/4" - 10 x 24" long anchor bolts below grade **with five inches (5") projecting above grade**. Use the template provided to properly position the bolts within the concrete foundation.

WEBS-PM – Pedestal Mount Emergency Phone Station with WEBS® Installation Instructions



4. Install one 3/4" nut and one washer on each anchor bolt 2.5"-3.5" above grade to top of washer. This will allow for a **1/2" air gap** between the foundation and the Pedestal which will allow airflow and prevent moisture problems. Verify that the nuts are level (0° pitch).



NOTE: To insure proper grounding of all electrical components, the tower mount should be effectively earth grounded from the grounding stud (located across from the lower access panel) with 6 AWG or better insulated, stranded copper wire to the metallic power service raceway (conduit) or an 8' or longer corrosion-resistant ground spike.

5. After removing the lower access panel of the Pedestal, install the tower onto the bolts with the Emergency Phone opening oriented in the desired direction. Install second set of nuts and washers. Tighten the upper nuts; the bottom set is used only for leveling.

WEBS-PM – Pedestal Mount Emergency Phone Station with WEBS® Installation Instructions

IV. Wiring

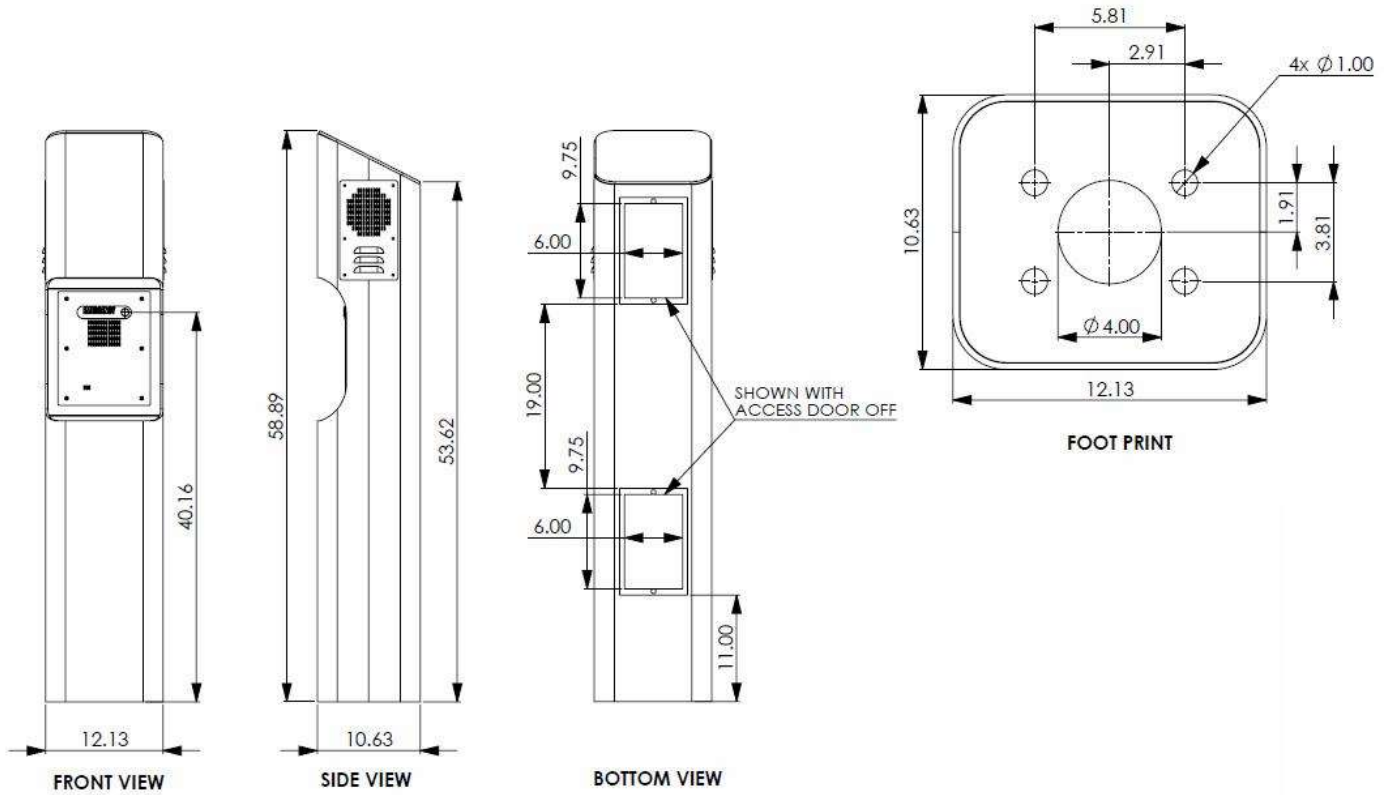
1. Install conduit through the 4-inch diameter hole at the bottom of the Pedestal and bring power line and/or communication line to the inside of the Pedestal.
2. The **WEBS-AMP-2** amplifier and loudspeakers are provided in the **WEBS-PM-KIT** package.
3. Connect the **WEBS-AMP-2** amplifier audio input (black and red flying leads from the interface labeled “INPUT”) to the audio line level output of either the **WEBS-CM-2** or **VOIP-500 Series Phone**.
4. Connect the **WEBS-AMP-2** amplifier trigger pair (blue and orange-white) to any programmed Aux. Output of either the **WEBS-CM-2** or **VOIP-500 Series Phone**. Refer to the **WEBS-CM-2** or **VOIP-500 Series Phone** Manual for information regarding device configuration and programming.
5. For the **WEBS-PM** 120VAC - 240VAC power option, connect the input power supply of the **WEBS-AMP-2** amplifier to 120VAC - 240VAC, 60Hz (brown is positive, blue is neutral).
6. For the **WEBS-PM** 12/24 VDC power option, connect the **WEBS-AMP-2** amplifier to 12VDC, 3A input (white is positive, black is negative).
7. Mount the two (2) loudspeakers behind the appropriate speaker grilles inside the Pedestal.
8. Connect each of the two (2) loudspeakers to the **WEBS-AMP-2** amplifier. Each wire is appropriately labeled on both the loudspeaker end and the amplifier end. Match and connect the loudspeaker wire to that of the **WEBS-AMP-2** amplifier according to the color and labeling scheme defined in the table below:

Text on Wire Label	Wire Color
CH1(+)	White
CH1(-)	White-Black
CH2(+)	Gray
CH2(-)	Gray-Black

V. Amplifier and Loudspeakers

1. The **WEBS-AMP-2** amplifier volume level is preset to the maximum. For configuration of the gain setting of the audio line level output of the **WEBS-CM-2** module or **VOIP-500 Series Phone**, please refer to the **WEBS-CM-2** or **VOIP-500 Series Phone** Manual for more information.
2. **Exercise caution when adjusting the volume to maximum levels—ear protection is strongly recommended.** The loudspeakers are capable of reaching sound levels well above 110dBA.

WEBS-PM – Pedestal Mount Emergency Phone Station with WEBS® Installation Instructions



All dimensions are in inches and are provided for reference only.