

POINTSOURCE™

PORTABLE BATTERY POWERED POE INJECTOR



Install, configure, focus & align IP cameras even without available network or POE

POINTSOURCE™ is a rechargeable, portable battery-powered POE injector for IP cameras specifically designed to make installation, site surveys, testing and demonstration work simple and fast.

Allows local viewing of IP camera images on laptop/netbook close to camera

Enables rapid and precise adjustment of lens focus and viewing angle

Includes a 12 volt power output for auxiliary equipment

Battery capacity sufficient for typical full day's installation work

POINTSOURCE supports all classes of 802.3af POE device

Installs in seconds – removes in seconds - reduces time on site



Portable POE battery pack for installation site work, site surveys and demonstrations

POINTSOURCE is ideal for powering POE IP cameras in-situ, when in-line POE is not yet available. The shoulder-strap makes it easy to carry.

Portable, rechargeable, power where you need it

Veracity's POINTSOURCE is a portable, rechargeable battery - powered POE (Power over Ethernet) injector. It is designed for field use, being compact and easy to handle, with a useful shoulder strap, which leaves your hands free.

It can deliver enough power to support a full day's IP camera installation work.

POINTSOURCE provides a similar functionality to Veracity's PINPOINT, but includes a built-in POE power source to allow installation and set-up of IP cameras before POE power is available through the network.

POINTSOURCE can be used with all IEEE 802.3af POE compatible equipment, including IP cameras, Wireless Access

Points, VOIP phones and POE-powered Access Control devices.

On Site configuration

The primary application for POINTSOURCE is the in-situ configuration, set-up and fine adjustment of IP cameras on an installation site. By connecting a laptop or netbook to the IP camera through POINTSOURCE, all aspects of the camera image (focus, direction, aperture, zoom, resolution, compression etc.) can easily be viewed or adjusted.

Site surveys and pre-installation trials

POINTSOURCE allows the rapid set-up of an IP camera during site-surveys, allowing the integrator to capture snapshots or video clips of the actual on-site scenes for presentation to the prospective end-user. This is an effective

example of when a "picture paints a thousand words".

Customer demonstrations can be done anywhere

Any new IP camera can very quickly be demonstrated to a client or consultant using just the camera, a laptop and the POINTSOURCE package. No external power or additional cabling is required, allowing demonstrations to be done anywhere, from a café tabletop to a desert road.

Mobile and temporary installations

A POINTSOURCE and IP camera with SD-card slot are all that's required for a very compact and easily transported temporary surveillance recording system.

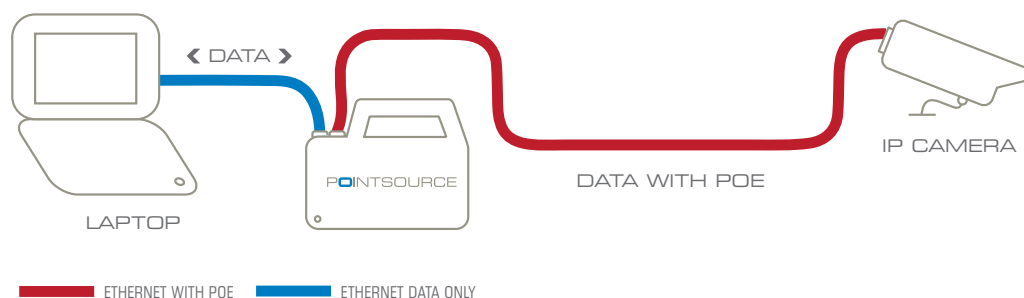


Diagram 1. A POINTSOURCE delivers full-bandwidth Ethernet and full-power POE to a camera before normal POE services are available.



What is included in the POINTSOURCE package?

The POINTSOURCE package includes the POINTSOURCE unit and battery (fitted), a shoulder strap, universal charger, red network patch cable, blue network patch cable and operating instructions.

POINTSOURCE complies with universal IEEE 802.3af POE standard, and can deliver up to 15.4 watts of POE power, while simultaneously powering other 12V DC accessories as required. Integrated network crossover ports allow the direct connection of a laptop or netbook PC (as in Diagram 1 overleaf).

LED Indicators

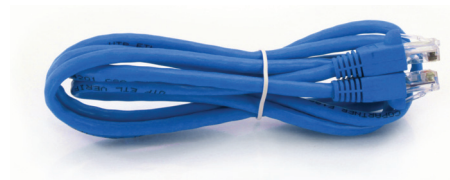
Three green LEDs provide an indication of remaining battery life. A red LED indicates when POE is being delivered to a compatible device connected to the DATA port. If an incompatible device is connected (or needs too much power) then the red LED will flash indicating the problem.

Battery Life

POINTSOURCE has a battery life of 3 to 5 years, or 200 - 1000 cycles depending upon discharge depth and operating temperature. A replacement battery service may be available. Please contact Veracity for further details.

Auxiliary Output

The 12V DC auxiliary output may be used for accessories such as monitors or meters, or other 12V devices, and may be used at the same time or independently of the POE output.



The POINTSOURCE package includes the POINTSOURCE unit and battery (fitted), a shoulder strap, universal charger (UK, US, EU and AU plugs), red network patch cable, blue network patch cable and operating instructions.

TECHNICAL SPECIFICATION] POINTSOURCE™

POWER	
POE output	48V DC, IEEE 802.3af compliant
Auxiliary output	12V typical (10 to 13.5V) range) 1.5 amps max
Fuse	3A slow-blow, self-resetting
Battery type	Maintenance-free, sealed lead-acid battery*
Discharge life	6 hours continuous for a 5 watt camera (typical)
Charger	Three-stage intelligent (14.4V/1A/13.8V float)
ETHERNET INTERFACE	
100BASE-TX, 10BASE-T, half/full duplex	
LEDS	
POE Status indicators	Red LED shows ON - Enabled. FLASH - Error. OFF - No POE.
Battery level	Green LEDs show Full, Half, Low
POE STANDARDS	
IEEE 802.3at 15.4 watts max	
PHYSICAL/ENVIRONMENTAL	
Dimensions	L 190mm W 120mm H 90mm
Weight	1.7kg [3.75lb] including battery
Operating temperature	Operating -20°C to 45°C [-4°F to 113°F] Charge 0°C to 35°C [32°F to 95°F]
Relative humidity	Up to 85%, non-condensing
Compliance	RoHS, Battery Directive compliant. CE, FCC, REACH exempt IATA non-restricted (OK to transport by air)
PRODUCT CODES	VAD-PS POINTSOURCE Portable POE Injector Includes carry strap, battery (fitted), universal charger and network cables.

* Only Veracity-specification batteries may be used in POINTSOURCE. Other similar sized batteries are not compatible.



Americas & Asia Sales :
Veracity USA Inc.
65 Harristown Road
Glen Rock
NJ 07452
USA

Tel: 1-800-679-1590
Fax: 1-800-679-0714
www.veracityglobal.com
sales@veracityusa.com

EMEA Sales :
Veracity UK Ltd
Prestwick International Aerospace Park
4 Dow Road
Prestwick
KA9 2TU
UK
Tel +44 (0) 1292 264967
Fax +44 (0) 845 528 1081
www.veracityglobal.com
sales@veracityuk.com