

POE POWER AVAILABILITY

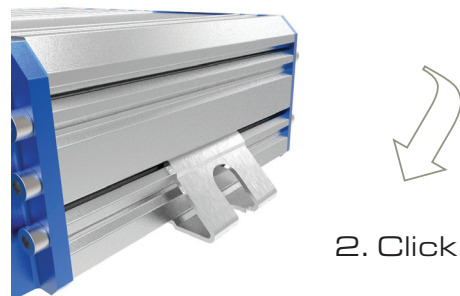
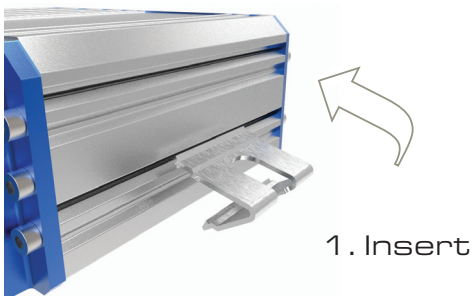
- CAMSWITCH 8 Plus can deliver up to full 802.3at POE Plus power on all 8 ports when used with the rack PSU system. For other installations, the total budget is limited by the power supply connected.
- The power budget is the total power used by POE devices. This information may be found in the IP camera or POE device datasheets. POE power classes are ignored.
- For example, the VPSU-57V-1500 provides a 78W budget. This is enough for two full-power 802.3at (25.5 watt) cameras plus two full power 802.3af (13 watt) cameras, or eight cameras of up to 9 watts each.

- To check the power budget for your supply, refer to the table below. Only Veracity 57V power supplies may be connected to DC inputs.

INPUT	SOURCE	BUDGET
DC front	VPSU - 57V - 800	40 watts
	VPSU - 57V - 1500	78 watts
DC rear	Veracity rack PSU	204 watts
POE	POE switch	10 watts
	VOR - OSP	25 watts

WALL MOUNT CLIPS

- To mount the unit securely to a flat surface, fit the enclosed clips as shown and refer to the mounting template below.



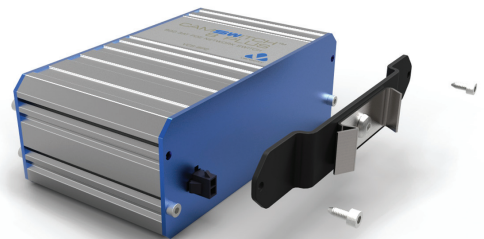
1 U RACK BRACKET (Option)

- Use with rack PSU options



DIN RAIL CLIP (Option)

- Remove upper two screws and fit as shown.



DIMENSIONS | MOUNTING HOLE TEMPLATE

- Width 110mm (131mm inc. clips) | Depth 70mm (80mm inc. connectors) | Height 40mm | Weight 225g

Scale 1:1

