



Product Data Sheet

3008-W

Recessed "Stubby" roller plunger with wire leads

Roller Plunger Recessed Contact

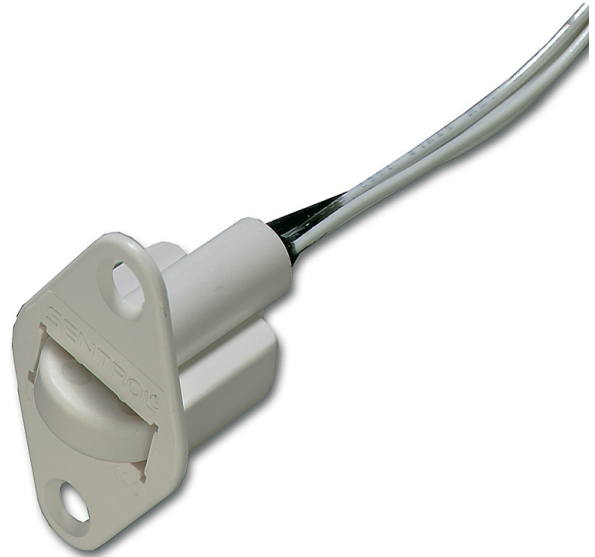
The Sentrol roller plunger contacts save installation time while providing reliable magnetic contact security. The contact switch is activated when the door opens, releasing the tension on the wheel plunger. Drill only one hole to mount the roller plunger, the entire magnetic contact is housed in an economical single unit. Recessed mounting hides the contact within the frame of the door it protects.

Reliable Function

Sentrol's roller plunger wheel is designed to operate with a smaller surface area in contact with the door. This reduces the likelihood that dirt and other debris will clog the mechanism. The specially designed ABS plastic housing protects the roller wheel from pressure exerted by swelling wood that could cause ball plungers to jam in place.

Applications

Use the roller plunger contacts to protect a variety of doors and windows. It can also be used to protect high-value objects on display, such as antiques, rare books or works of art, by placing the object on the recessed contact.



Standard Features

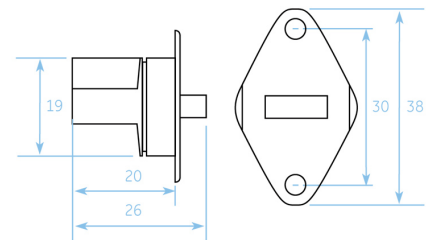
- Ideal for replacing short mechanical switches
- Works as plunger or ball switch
- Flanges for reliable, positive retention
- Spacers, mounting screws included

3008-W

Recessed "Stubby" roller plunger with wire leads

Specifications

Gap distance (max)	N/A
Connections	30 cm wire leads
Contact	NC
Supervised loop	No
Dimensions (Ø x L)	
Contact	Ø 19 x 20 mm
Magnet	N/A
Color	White



Ordering Information

Part No.	Description
3008-W	Recessed "Stubby" roller plunger with wire leads

