

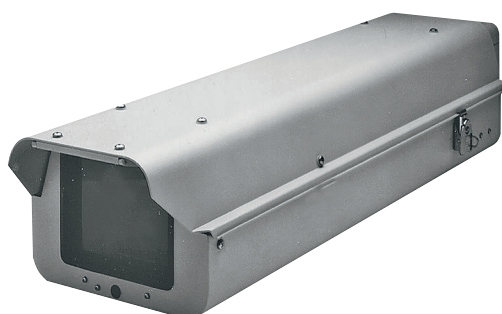
TC9346A Series Housings Indoor/Outdoor

www.boschsecurity.com



BOSCH

Invented for life



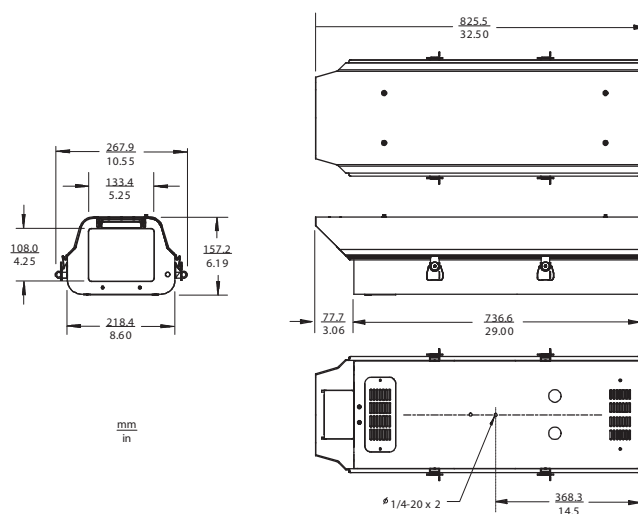
- For Cameras With up to 20x Zoom Lenses
- All Aluminum Construction
- Easy Installation
- Built-in Elevation Block
- Gas Spring-assisted Forward Opening Lid

The TC9346A Series Environmental Housings are constructed of aluminum, and designed to accommodate large format CCD cameras with up to 20x zoom lenses.

The housing opens from the rear by releasing side mounted latches, which may be secured with a padlock. Opening is assisted by a unique gas spring that securely holds the lid when opened fully. The forward opening lid on these units allows maximum accessibility during installation and camera/lens adjustments. A unique camera sled with a built-in elevation block is provided. The block is removable and can be inverted depending on the camera/lens combination utilized.

The TC9346A Series Housings are available with a full complement of factory and field installed accessories. With heater and blower installed, these housings provide enclosure protection for camera/lens assemblies in ambient temperature range of -23°C to 49°C (-10°F to 120°F).

Installation/configuration notes



Dimensional Outline TC9346A Series Housings Outdoor

Technical specifications**Electrical**

TC9346A	
TC9346A-1	Includes Heater/Blower, 120 VAC, 60 Hz
TC9346A-2	Includes Heater/Blower, 24 VAC, 60 Hz
TC9346A-3	Includes Heater/Blower, 230 VAC, 60 Hz

Mechanical

Max Camera/Lens Size	139.7 x 190.5 x 711.2 mm (5.5 x 7.5 x 28 in)
	blower kit reduces length by 165.1 mm (6.5 in)
Cable Entry	Two glands on bottom of enclosure
Window	6.35 mm (0.25 in) glass; 107.9 x 133.3 mm (4.25 x 5.25 in)
Latches	Four stainless steel side-mounted latches; accepts padlock for security
Housing Mounting	Two (2) 1/4-20 tapped holes
Camera Mounting	Removable camera sled with built-in elevation block
Construction	Aluminum
Finish	Gray polyester powder coat
Dimensions	See Dimensional Outline
Weight	7.24 kg (16 lb) without heater/blower 8.15 kg (18 lb) with heater/blower

Environmental

Ambient Temperature	-23°C to 49°C (-10°F to 120°F)
Enclosure Protection	Meets NEMA-3R Standards
Product Safety	Complies with CE Regulations, UL, CSA Standards

Ordering information**TC9346A Outdoor Housing**

Housing environmental heater/blower
Order number **TC9346A**

Accessories**HK57-1 Heater Assembly**

for TC9346A, requires O/I-PCB, 120 VAC, 50/60 Hz, 90 W
Order number **HK57-1**

HK57-2 Heater Assembly

for TC9346A, requires O/I-PCB, 24 VAC, 50/60 Hz, 50 W
Order number **HK57-2**

HK57-3 Heater Assembly

for TC9346A, requires O/I-PCB, 230 VAC, 50/60 Hz, 70 W
Order number **HK57-3**

BK57-1 Blower Assembly

for TC9346A, requires O/I-PCB, 120 VAC, 60 Hz, 15 W
Order number **BK57-1**

BK57-2 Blower Assembly

for TC9346A requires O/I-PCB, 24 VAC, 50/60 Hz, 10 W
Order number **BK57-2**

BK57-3 Blower Assembly

for TC9346A, requires O/I-PCB, 230 VAC, 50 Hz, 15 W
Order number **BK57-3**

WW5729-1 Window Wiper Kit

120 VAC, 60 Hz, 15 W
Order number **WW5729-1**

WW5729-2 Window Wiper Kit

24 VAC, 50/60 Hz, 15 W
Order number **WW5729-2**

WW5729-3 Window Wiper Kit

230 VAC, 50 Hz, 15 W
Order number **WW5729-3**

WD57-1 Window Defroster and Defogger

120 VAC, 60 Hz, 30 W
Order number **WD57-1**

WD57-2 Window Defroster and Defogger

24 VAC, 50/60 Hz, 30 W
Order number **WD57-2**

WD57-3 Window Defroster and Defogger

230 VAC, 50 Hz, 30 W
Order number **WD57-3**

SS5729 Sunshield

for TC9346A
Order number **SS5729**

T157 Low Temperature Package

Order number **T157**

O/I-PCB PC Board

for TC9346A, required with heater, blower, or
defroster
Order number **O/I-PCB**

Represented by:

Americas:

Bosch Security Systems, Inc.
130 Perinton Parkway
Fairport, New York, 14450, USA
Phone: +1 800 289 0096
Fax: +1 585 223 9180
security.sales@us.bosch.com
www.boschsecurity.us

Europe, Middle East, Africa:

Bosch Security Systems B.V.
P.O. Box 80002
5617 BA Eindhoven, The Netherlands
Phone: + 31 40 2577 284
Fax: +31 40 2577 330
emea.securitysystems@bosch.com
www.boschsecurity.com

Asia-Pacific:

Robert Bosch (SEA) Pte Ltd, Security
Systems
11 Bishan Street 21
Singapore 573943
Phone: +65 6571 2808
Fax: +65 6571 2699
apr.securitysystems@bosch.com
www.boschsecurity.asia

China:

Bosch (Shanghai) Security Systems Ltd.
201 Building, No. 333 Fuquan Road
North IBP
Changning District, Shanghai
200335 China
Phone +86 21 22181111
Fax: +86 21 22182398
www.boschsecurity.com.cn

America Latina:

Robert Bosch Ltda Security Systems Division
Via Anhanguera, Km 98
CEP 13065-900
Campinas, Sao Paulo, Brazil
Phone: +55 19 2103 2860
Fax: +55 19 2103 2862
latam.boschsecurity@bosch.com
www.boschsecurity.com