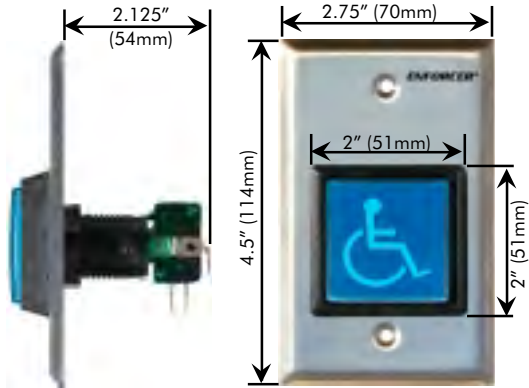


ENFORCER[®] SD-7202BC-HC

"Handicap" Push-to-Exit Button with Stainless Steel Plate

FEATURES

- Large (2" square), illuminated "Handicap" style button.
- Easily recognized blue A.D.A. button.
- Illuminated with a long-life bulb, replacement bulb included.
- Momentary switch, S.P.D.T., N.O./N.C. contacts rated 10 Amps at 125 ~ 250 VAC.
- Includes stainless-steel single-gang face plate.
- Includes five color-coded, 12-inch wire leads with easy-to-attach spade lugs for fast installation.



INSTALLATION

- Run four wires through the wall to a single-gang back-box (not included):
 - Two wires for 12VDC or 24VDC for the light.
 - One wire from either the N.O. or N.C. terminal of an alarm or access control system which can unlock an electrically-controlled lock.
 - One wire from COM terminal of the alarm or access control system.
- Connect four colored wires to the switch (see fig. 1):
 - 2 x GREEN wires, one each to the brass-colored spade connectors on each side of the black switch.
 - GREEN/WHITE wire to N.C. connector on black switch (if needed).
 - BLUE/WHITE wire to N.O. connector on black switch (if needed).
- Connect the four colored wires to wires from the alarm or access control system and the light's power source (see fig. 1):
 - 2 x GREEN wires - To 12VDC or 24VDC source. If 24VDC is used, then be sure to use the supplied resistor on either one of the two GREEN wires.
 - GREEN/WHITE wire - To the N.C. terminal of the alarm or access control system (if needed).
 - BLUE/WHITE wire - To the N.O. terminal of the alarm or access control system (if needed).
 - WHITE wire - To COM terminal of alarm or access control system.
- Screw the plate into the back-box, taking care not to crimp the wires.

Included in this box:

- Five color-coded, 12-inch, AWG 18 wire leads with easy-to-attach spade lugs for fast installation.
- Stainless-steel single-gang plate.
- Replacement bulb (12V, 1.2W, 15,000-hour life).
- Resistor (150 ohm, 1 Watt).

Fig. 1

Connections:

Green (light bulb) 12V or 24V (requires resistor)*

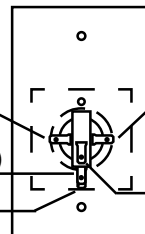
Blue/White (for N.O.) (Top Lug)

Green/White (for N.C.) (Bottom Lug)

Green (light bulb) 12V or 24V (requires resistor)*

White (COM)

10A @ 125~250VAC



*Note: Use 150-ohm, 1-watt resistor on either one of Green wires for 24-volt operation.

SECO-LARM[®] U.S.A., Inc., 16842 Millikan Avenue, Irvine, CA 92606

SECO-LARM's policy is one of continual development and improvement. For this reason, SECO-LARM reserves the right to change specifications without notice. Copyright © 2002 SECO-LARM[®] U.S.A., Inc. All rights reserved.

file: DTP/Manual/MSd7202BC-HC.p65
Order Part # 763-147/919