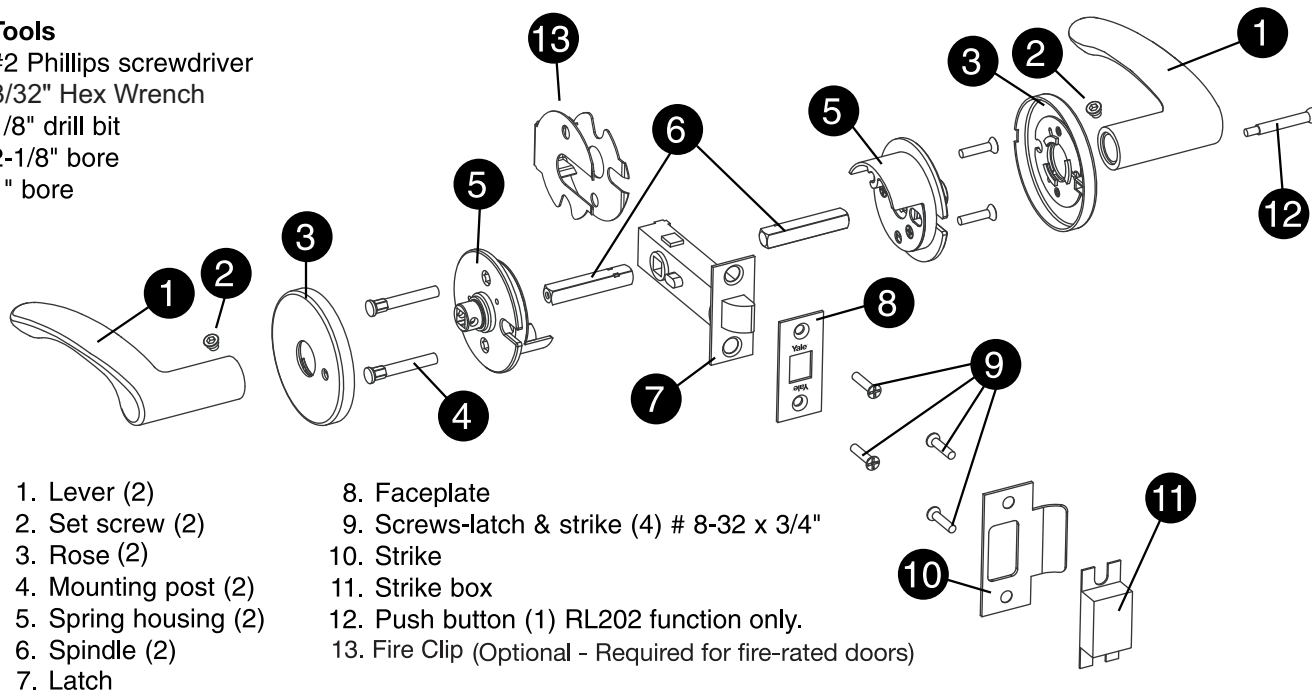




# RL Series Tubular Lockset Installation Instructions

## Tools

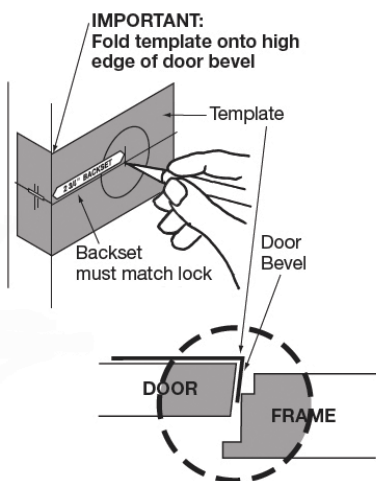
#2 Phillips screwdriver  
3/32" Hex Wrench  
1/8" drill bit  
2-1/8" bore  
1" bore



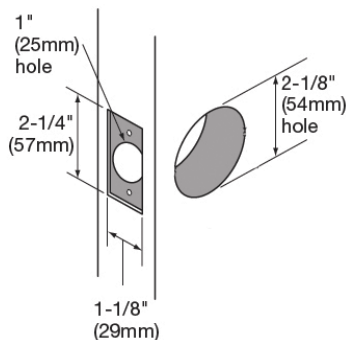
## Door Preparation

Use Door Markers supplied. Information below is for reference only.

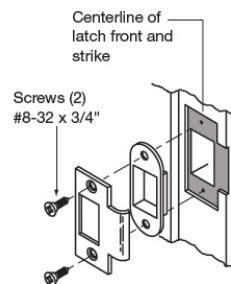
### Mark and Drill Holes



### Final Door Prep



### Frame Prep for Strike

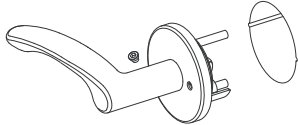


Any retrofit or other field modification to a fire rated opening can potentially impact the fire rating of the opening, and Yale Locks & Hardware makes no representations or warranties concerning what such impact may be in any specific situation. When retrofitting any portion of an existing fire rated opening, or specifying and installing a new fire-rated opening, please consult with a code specialist or local code official (Authority Having Jurisdiction) to ensure compliance with all applicable codes and ratings.



## 1 Latch Installation

Install loosely;  
Tighten after step #2  
Screws (2)  
#8-32 x 3/4"



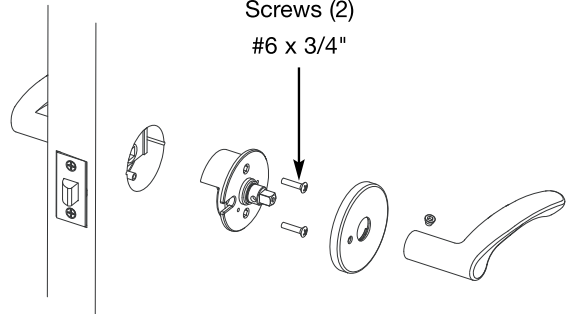
Note: RL202 - The threaded hole on locking piece must be to the inside of the door, so the Push Button (Detail #12 shown on other side) can be threaded into it.

## 2

### IMPORTANT

Test for proper operation before closing door

Screws (2)  
#6 x 3/4"



Rose to be removed with flat headed screwdriver at notch

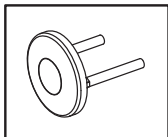
## 3

Tighten latch screws left loose in step 1.

## Installation of Dummy Trim

### Install RL255 Single and RL255D Double

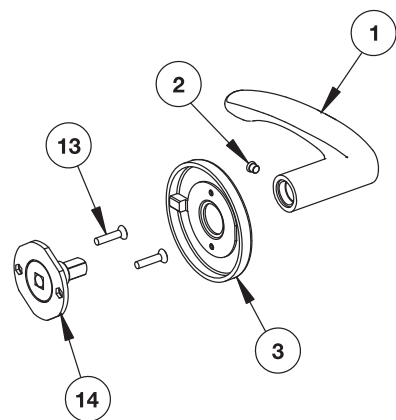
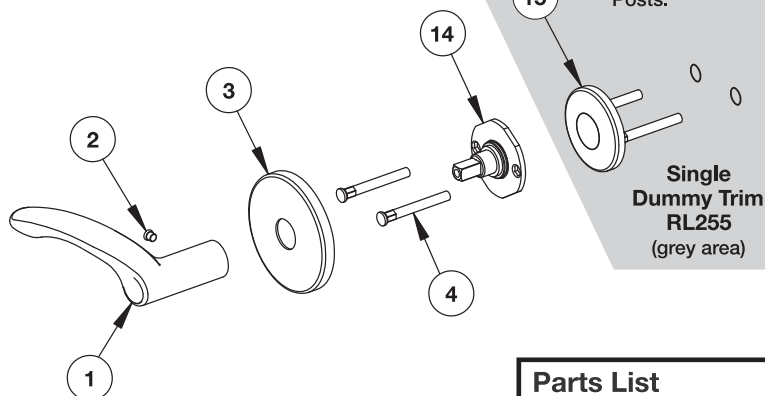
Note: Metal Door Template see page 3.



#15 O/S Thru-Bolt Plate Assembly to be used for the RL255.

DOOR

2-1/8" Hole Not Required for Dummy Trim.  
ONLY Two Holes Required for Mounting Posts.

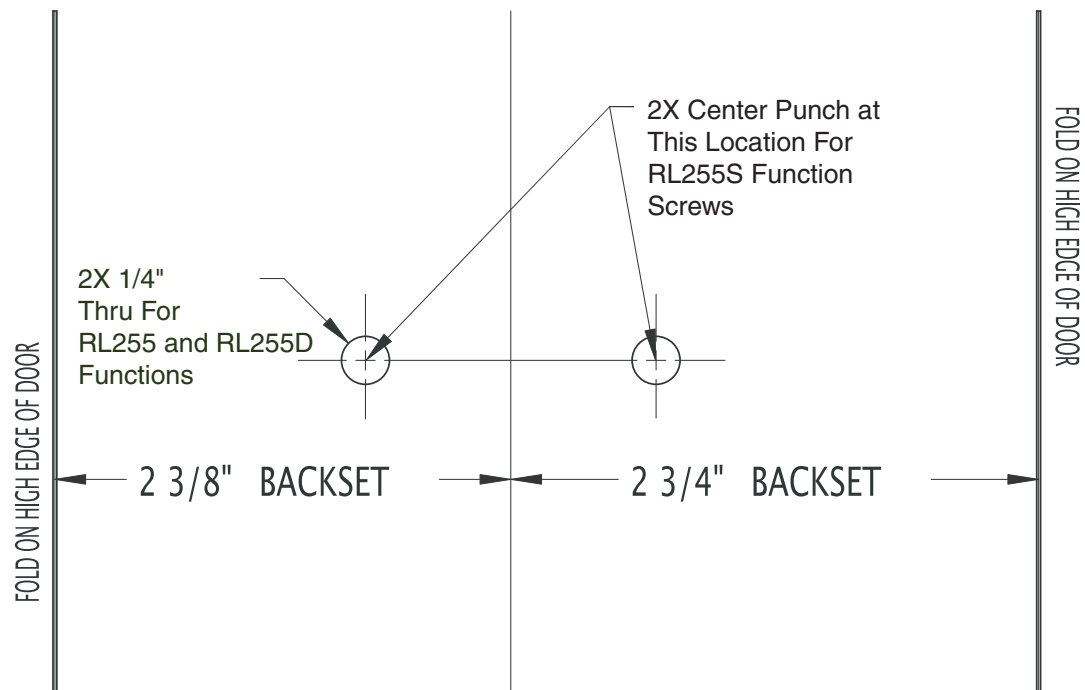


### Parts List

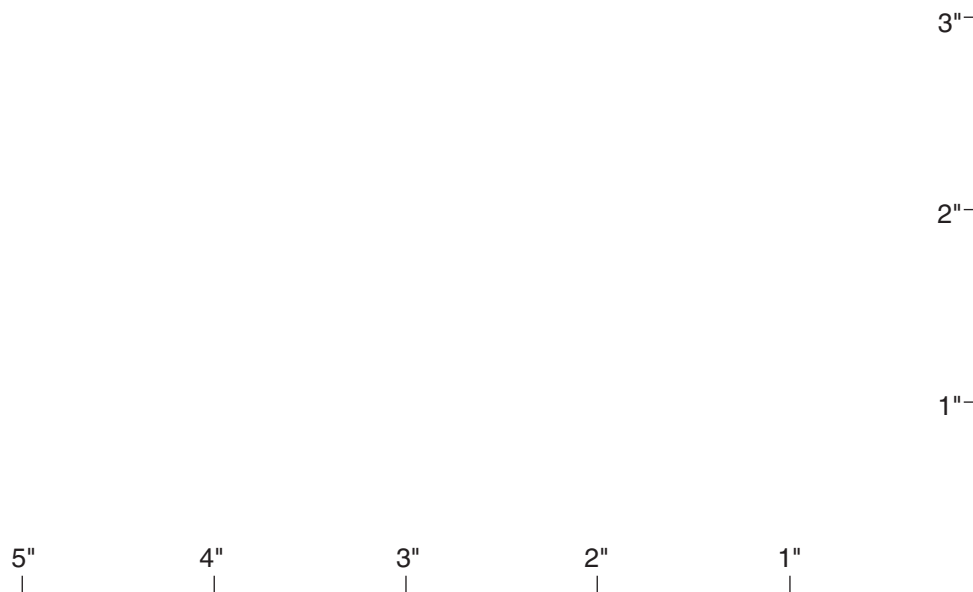
1	Lever	(2)	13	Mounting Post Screw	(2)
2	Set Screw	(2)	14	Mounting Plate Assembly	(2)
3	Rose	(2)	15	O/S Thru-Bolt Plate Assembly	(1)
4	Mounting Post	(2)		(RL255 ONLY)	

## Dummy Functions

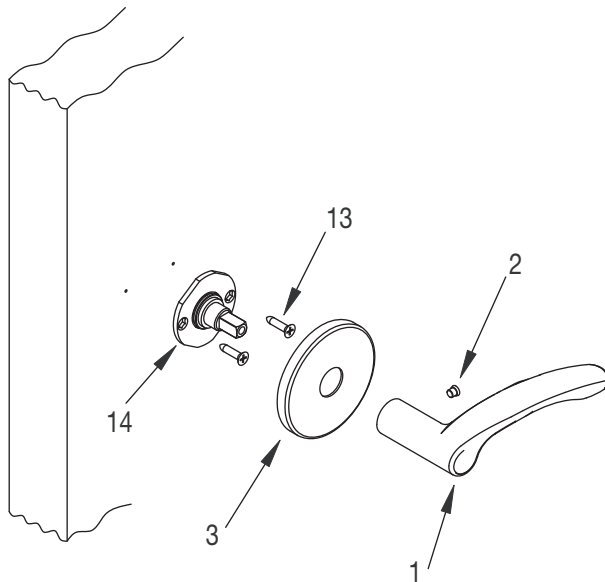
RL255, RL255D & RL255S Functions



Note: See Door Marker on page 4 for all other functions.



## Install RL255S Surface



### Parts List

1	Lever	(1)
2	Set Screw	(1)
3	Rose	(1)
13	Screws	(2)
14	Mounting Plate Assembly	(1)

### 1. Prepare Door

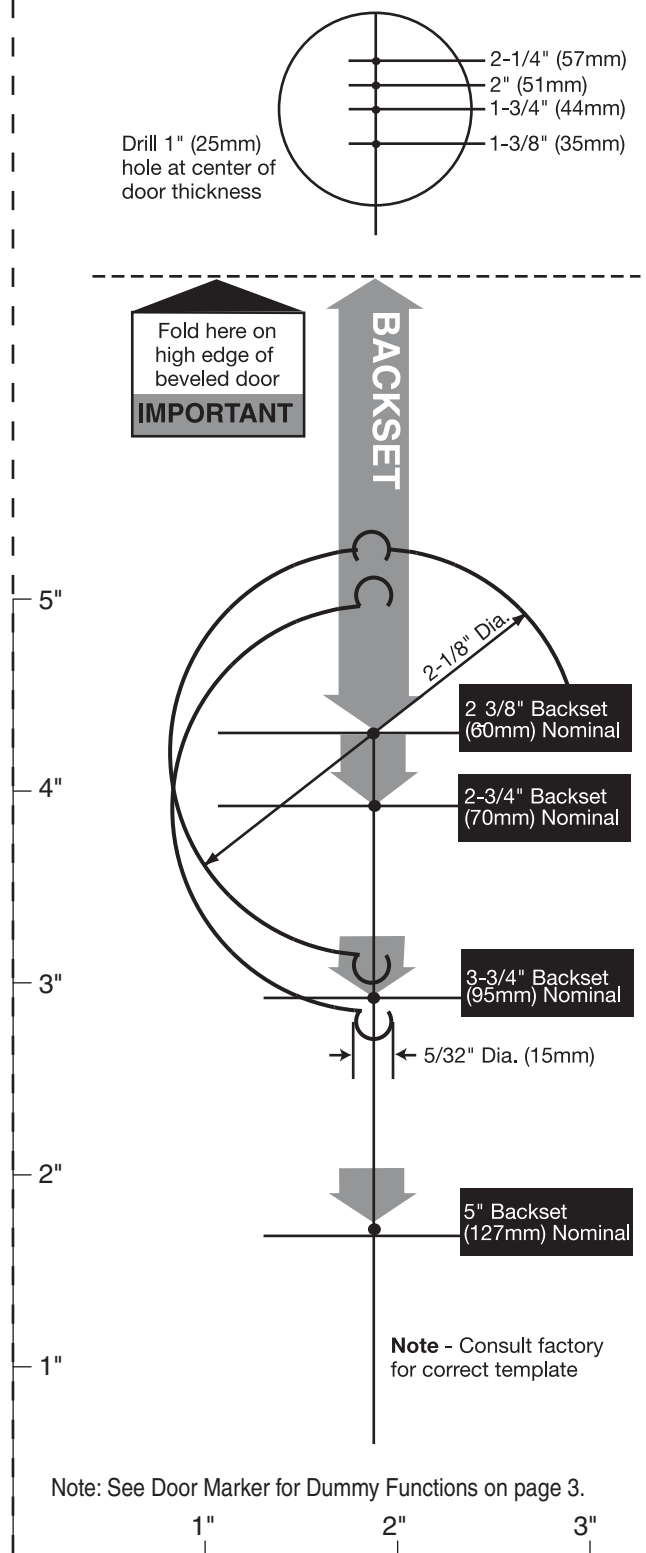
- Select proper backset on door marker (page 3) and locate 38" from finished floor.
- Center punch 2 places as noted on door marker.

### 2. Install Mounting Plate Assembly

- Locate holes in mounting plate assembly over center punch marks.
- Install (2) screws and tighten to secure mounting plate assembly to door.

### 3. Install Rose and Lever

- Install rose onto mounting plate assembly and rotate clockwise to tighten.
- Install lever onto spindle. Insert set screw into hole.



## Yale Locks & Hardware

Product Support Tel 800.438.1951 • [www.yalelocks.com](http://www.yalelocks.com)

Yale Locks & Hardware is a division of Yale Security Inc., an ASSA ABLOY Group company.

Copyright © 2016, Yale Security Inc., an ASSA ABLOY Group company.

All rights reserved. Reproduction in whole or in part without the express written permission of Yale Security Inc. is prohibited.