



www.firelite.com

October 12, 2004

DF-52068 • I-400

PAM-1, PAM-2 and PAM-4 Multi-Voltage Relay Modules

Section: Miscellaneous

GENERAL

Air Products & Controls, Inc. **PAM-1, PAM-2, and PAM-4 Multi-Voltage Relay Modules** are encapsulated multi-voltage devices. The PAM-1 relay provides 10.0 Amp Form-C contacts and may be energized by one of three input voltages: 24 VAC, 24 VDC, or 115 VAC. The PAM-2 relay provides 7.0 Amp Form-C contacts and may be energized by one of two input voltages: 12 VDC or 24 VDC. The PAM-4 relay provides 10.0 Amp Form-C contacts and may be energized by a wide voltage range from 9 VDC to 40 VDC

A red LED is provided on both models. When illuminated, it indicates the relay coil is energized.

Either model may be mounted by using the double-sided adhesive tape, the self-drilling screw, or by placing loosely in a backbox.

PAM-1, PAM-2, and PAM-4 Relay Modules are ideal for applications where remote relays are required for control or status feedback. They are suitable for use with HVAC, temperature control, fire alarm, security, energy management, and lighting control systems.

SPECIFICATIONS

Power requirements: for **PAM-1:** 0.015 Amps per position @ 24 VDC, 24 VAC, 115 VAC; for **PAM-2:** 0.015 Amps per position @ 12 VDC or 24 VDC; for **PAM-4:** 0.015 Amps per position @ 24 VDC or 12 VDC.

Relay: UL-recognized SPDT.

Contact rating, PAM-1: 10.0 A @ 115 VAC; 7.0 A @ 28 VDC; 250 μ A @ 5 VDC.

Contact rating, PAM-2: 7.0 A @ 115 VAC; 7.0 A @ 28 VDC; 250 μ A @ 5 VDC.

Contact rating, PAM-4: 10.0 A @ 120 VAC; 7.0 A @ 24 VDC; 250 μ A @ 5 VDC.

Ambient temperature range: -58°F to +185°F (-50°C to +85°C).

Dimensions: 1.5" (3.81 cm) high x 1.0" (2.54 cm) wide x 0.875" (2.223 cm) deep, with 12" (30.48 cm) wire leads @ 18 AWG (0.75 mm²).



S3403

MEA
73-92-E
Vol. XXI



California
State Fire
Marshal
7300-1004:101



6753photo1.jpg

PRODUCT LINE INFORMATION

PAM-1 Single SPDT relay with LED, double-sided adhesive tape, mounting screw, 12" (30.48 cm) leads and six wire-nuts. **Power requirements:** 0.015 Amps per position @ 24 VDC, 24 VAC, 115 VAC. **Contact rating:** 10.0 A @ 115 VAC, 7.0 A @ 28 VDC, 250 μ A @ 5 VDC.

PAM-2 Single SPDT relay with LED, double-sided adhesive tape, mounting screw, 12" (30.48 cm) leads and six wire-nuts. **Power requirements:** 0.015 Amps per position @ 12 VDC or 24 VDC. **Contact rating:** 7.0 A @ 115 VAC; 7.0 A @ 28 VDC; 250 μ A @ 5 VDC.

PAM-4 Single SPDT relay with LED, double-sided adhesive tape, mounting screw, 12" (30.48 cm) leads and six wire-nuts. **Power requirements:** 0.015 Amps per position @ 12 VDC or 24 VDC. **Contact rating:** 10.0 A @ 120 VAC; 7.0 A @ 24 VAC; 250 μ A @ 5 VDC.

Fire-Lite® Alarms is a Honeywell company.

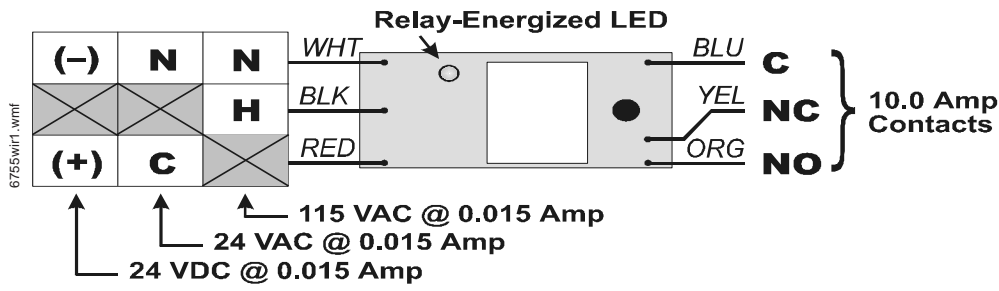
This document is not intended to be used for installation purposes. We try to keep our product information up-to-date and accurate. We cannot cover all specific applications or anticipate all requirements. All specifications are subject to change without notice.

For more information, contact Fire-Lite Alarms, One Fire-Lite Place, Northford, Connecticut 06472. Phone: (800) 627-3473, Toll-Free FAX: (877) 699-4105.

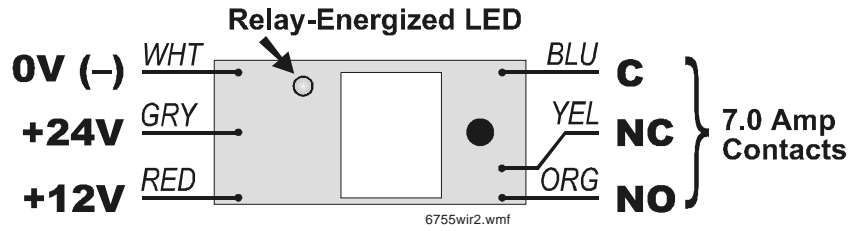


WIRING DIAGRAMS

PAM-1



PAM-2



PAM-4

