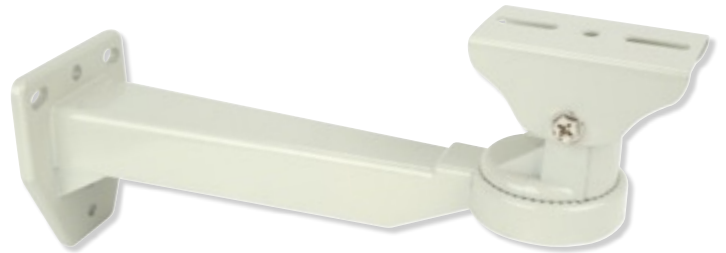


# OCHWMT

## WALL MOUNT FOR OCH CAMERA HOUSING



### PRODUCT FEATURES

- WEATHERPROOF
- USE WITH OCH1 AND OCH2

### SPECIFICATIONS

MAX LOAD	12 LBS
CONSTRUCTION	ALUMINUM
FINISH	BEIGE
DIMENSION	11.2"
SIZE BASE	3.8" X 3.3"
WEIGHT	1.8 LBS
SWIVEL ANGLE	360°
TILT ANGLE	90°