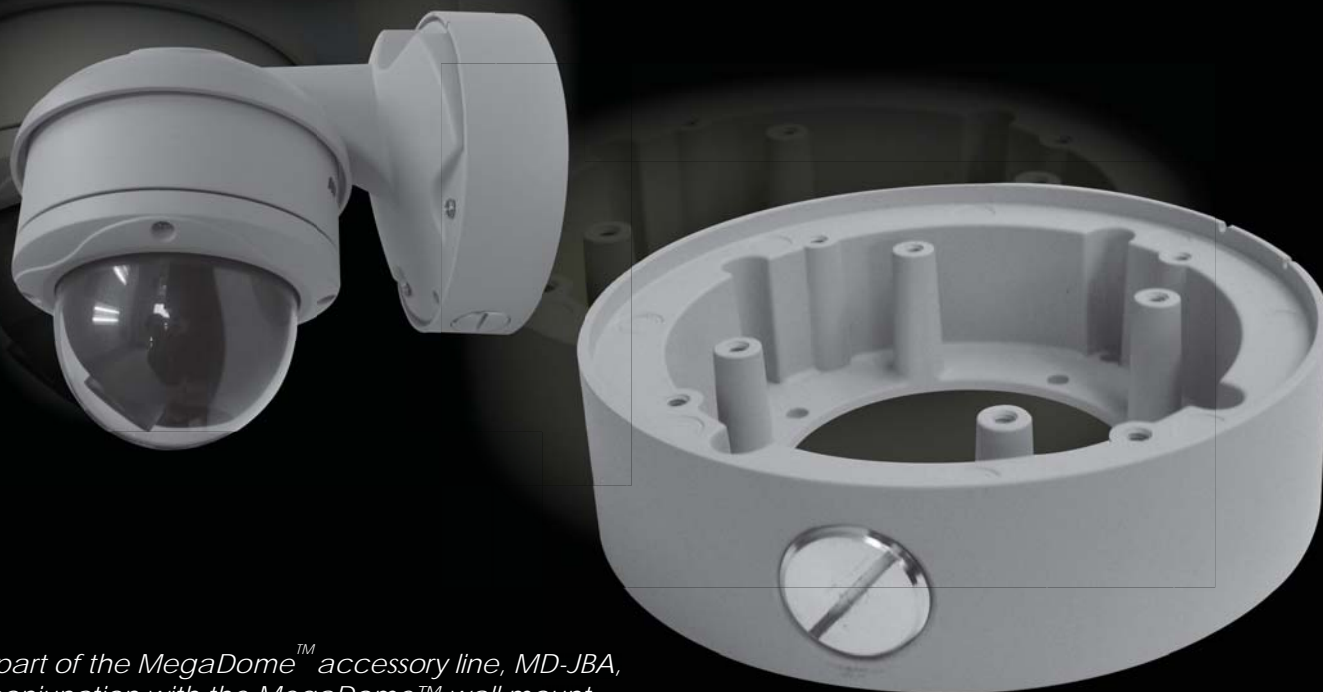


# MD-JBA

## Indoor/Outdoor Junction Box for MegaDome™

MD-JBA



*As part of the MegaDome™ accessory line, MD-JBA, in conjunction with the MegaDome™ wall mount, MD-WMT, is used to feed cable through conduit. Combining this accessory with the superior imaging of an AV camera provides the perfect solution for environments in which cameras need to be less noticeable, or require additional protection from the elements.*

### Arecont Vision Advantages:

#### Superior Solution for Various Environments

- Indoor or outdoor applications

#### Excellent Enclosure Protection

- Heavy duty enclosure features an IP66 rating for applications in harsh environments

#### Easy Installation

- Easy installation and superior design, perfect for indoor or outdoor applications

#### Compatibility

- Compatible with 3/4" NPT standard

#### Vandal Resistant

- Die-cast aluminum, resistant to impact and salt damage

MegaDome™ Accessories

### Model Numbers:

MD-JBA - Indoor/Outdoor Junction Box for MegaDome™

#### Mechanical

- Housing material: Aluminum
- Color: Gray
- Housing Height: 1.5 in (40 mm)
- Housing Diameter: 3.46 in (88 mm)
- Weight w/o camera: 450 g (1 lbs)

#### Environmental

- Enclosure Protection: IP66 Outdoor Protection Grade

#### Compatibility

- Compatible with 3/4" NPT standard

#### Compatible Accessories

MD-WMT

