

**INSTALLATION AND OPERATING INSTRUCTIONS**
**ASK-4® # 501 (LE-025)**
**INTRODUCTION**

The ASK-4® 501 is a single zone audio monitoring system with 2-way talk/listen capabilities. It consists of a remote speaker/microphone and audio base station with built-in microphone and speaker.

**KIT CONTENT**
**PRD #**

AP-1TB (LE-001)


**Description**

A single zone desk top audio base station. Contains a built-in microphone and speaker for listen and talkback with the remote unit (Model TLM-W). Has input/output to DVR/VCR for live audio and playback.

TLM-W (LE-007)

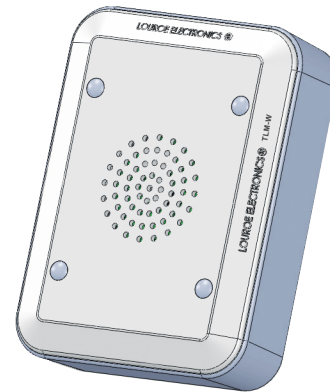
Two-way speaker/microphone - contains an electret condenser microphone and a 2.5" speaker. Included is a plastic backbox for surface mounting to a wall or flat surface.

AD-1 (LE-242)

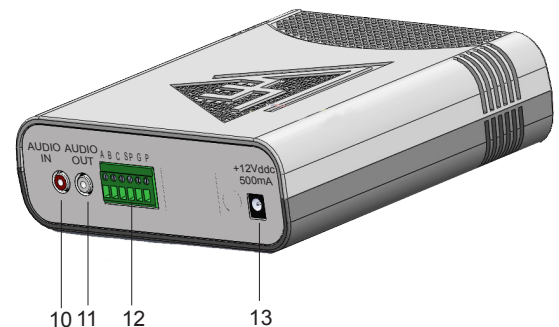
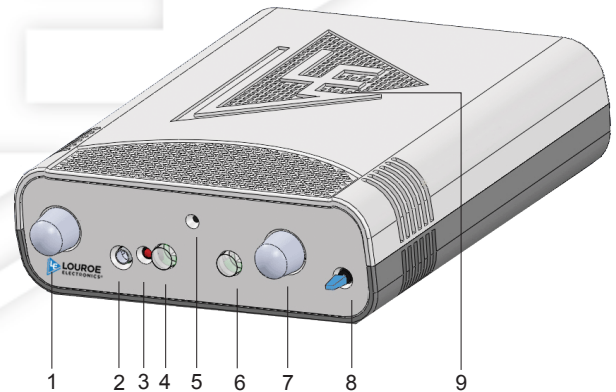
 listed AC ADAPTER. Supplies 12 Vdc to AP-1TB and TLM-W.

Dual RCA Connector Cable

For output/input connection to a DVR/VCR for audio recording and playback.

**TLM-W**

**Description of Parts**
**AP-1TB**

[1]	Power-Volume Control	Turns ON power to the unit as indicated by the Power LED[3]. Turning the knob more clockwise increase the volume of the monitored audio heard at the Speaker[9]
[2]	Headphone Jack	Used for private listening. Any 3.5mm stereo headphone with 8Ω to 600Ω impedance may be used. Mutes AP-1TB speaker output when in use.
[3]	Power LED	Lights when Power-Volume Control[1] is turned ON indicating power to the unit.
[4]	Zone Switch	Press to activate two-way audio monitoring.
[5]	Talkback MIC	Built-in microphone for talkback.
[6]	Playback/Mute Switch	Used when playing back audio from a recorder or mute the audio from the microphone. No audio is heard on the Speaker[9] when this switch is ON.
[7]	Talkback Volume Control	Rotate clockwise to increase the loudness of audio heard at the remote Speaker/Mic unit. Rotate counterclockwise to decrease the level of audio heard at the remote Speaker/Mic.
[8]	Talkback Switch	Hold down and talk so audio can be heard at the remote Speaker/Mic unit.
[9]	Monitor Speaker	Monitored audio is heard at this speaker. Muted when a headset is plug into Headphone Jack[2]
[10]	Audio-In Jack	Receives audio from an external source (recorded playback from a DVR or VCR).
[11]	Audio-OUT Jack	Sends audio to an external receiver (DVR, VCR, etc.)
[12]	MIC 6-Pin Terminal	Connects to speaker/microphone at remote location.
[13]	DC-IN Jack	Accepts 12 Vdc from external power supply (AC Adapter included).

**AP-1TB**


**INSTALLATION AND OPERATING INSTRUCTIONS**

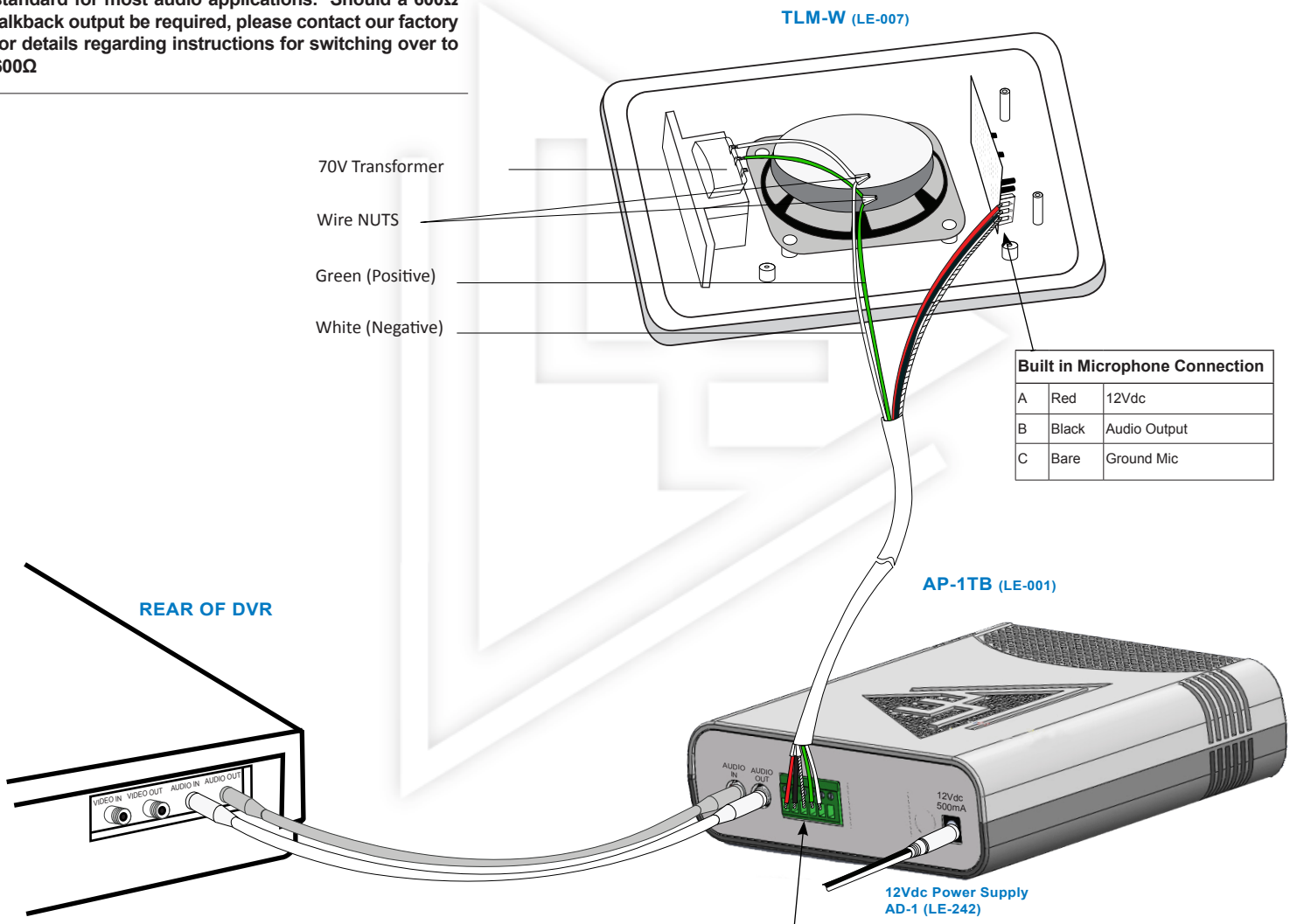
**INTERCONNECTION DIAGRAM**

**WIRING REQUIREMENTS**

4 Conductor consisting of: 2 Conductor shielded, 20 gauge with 22 gauge drain (microphone connection).  
2 Conductor unshielded, 18 gauge (speaker connection)  
All in the same jacket.



**NOTE:** Model AP-1TB Audio Base Station of ASK-4 Kit #501 is supplied with a 70V talkback output, which is standard for most audio applications. Should a 600Ω talkback output be required, please contact our factory for details regarding instructions for switching over to 600Ω



Built in Microphone Connection		
A	Red	12Vdc
B	Black	Audio Output
C	Bare	Ground Mic

Terminal Block identification of Model AP-1TB Audio Base Station		
A	Red	12Vdc
B	Black	Audio Input
C	Bare	Ground Mic
SP	Green	Speaker Positive
G	White	Speaker Negative
P		Not used with this application.

**INSTALLATION AND OPERATING INSTRUCTIONS**
**INSTALLATION INSTRUCTIONS**
**TLM-W SPEAKER/MICROPHONE**

Model TLM-W is designed for mounting to a wall or flat surface. Included is a plastic backbox for surface mounting to a wall. If flush mounting is needed, a 3 gang electrical box (not supplied) maybe used.

1. Drill an opening at top, bottom, side or back of backbox for passing wiring or connecting conduit. Four small screws are supplied for attaching backbox to a wall.
2. Four screws are also supplied for attaching the TLM faceplate to the backbox. The plastic hole plugs must be place on the screw holes of the faceplate to cover the screws.

**WIRING CONNECTIONS BETWEEN MODEL TLM-W SPEAKER/MICROPHONE AND AP-1TB AUDIO BASE STATION**

1. Connect one end of recommended cable to remote speaker/microphone (TLM-W). Connect wires wrapped with overall shield to terminals "A", "B", and "C" of TLM-W's terminal block. When using sample cable, connect red wire to terminal "A"; black wire to terminal "B" and bare wire to terminal "C".
2. Connect the two speaker wires (twisted pair) green and white to green and white wires of TLM-W's 70V transformer. Using wire nut connect green wire to green wire of TLM-W's 70V Transformer. Again, using wire nut connect white wire to white wire of TLM-W's 70V Transformer.
3. Connect the other end of the cable to AP-1TB Mic 6-Pin Terminal Block [12]. Make sure that wire connected to terminal "A" of remote TLM-W connects to terminal "A" of AP-1TB's Mic 6-Pin Terminal Block [12]; wire connected to terminal "B" of TLM-W connects to terminal "B" of AP-1TB; "C" to "C". Observe cable color coding. Terminal "P" of AP-1TB is not used with this application. Used only when paralleling to a second AP-1TB.
4. For speaker connection, connect green speaker wire (positive) to Mic 6-Pin Terminal Block [12] terminal "SP", connect white speaker wire (negative) to "G".
5. When a recording device is used (DVR,VCR,etc.) connect Audio-OUT Jack [11] to recorder's Audio-IN Jack with the dual RCA cable (supplied).
6. Connect Audio-IN Jack [10] to recorder's Audio-OUT Jack with the remaining RCA plug.

**OPERATION AND TEST**

1. **Applying Power To The System** - With all wiring connections complete, power up the system using the 12Vdc, 500mA power supply included with the kit. First connect the small end of power supply to the DC IN Jack [13] located on rear panel of AP-1TB Base Station. Connect the large end with the 2-prong plug to a standard 120Vac wall outlet or power strip.
2. **Rotate the Power-Volume Control** - [1] ON position as indicated by the Power LED[3] Power LED [3] will illuminate.
3. **Testing For Listen And Talkback** - At the AP-1TB Base Station push in Zone Switch [4] located on front panel of AP-1TB. Zone Switch[4] will illuminate (blue) and two-way communication is now activated. Have someone create sound by talking at the remote Model TLM-W Speaker/Microphone. Audio should be present via the AP-1TB's Monitor Speaker [9]. Adjust loudness of sound heard at the Monitor Speaker[9] by rotating the Power-Volume Control[1] clockwise to increase or counterclockwise to decrease.

**4. Talkback Mode** - To speak out to the remote TLM-W, press and hold down Talkback Switch [8] of the AP-1TB. Another person is needed to listen at the TLM-W location. If talkback volume needs adjusting, rotate Talkback Volume Control[7] clockwise to increase or counterclockwise to decrease.

**5. Audio Recording And Playback** - Model AP-1TB contains an Audio Out Jack [11] and an Audio In Jack [10], located on rear panel. Included with kit is a color coded dual RCA connector cable. RCA plugs are usually red and white.

For recording, take one end of dual RCA cable (white) and connect to Audio Out Jack [11] of AP-1TB. Connect other end (same color) to Audio In of the recording device (DVR, VCR, etc.). For listening to recorded playback through the AP-1TB, connect RCA plug into Audio Out of the recording device and the other end of RCA plug to Audio-In Jack [10] (red) of AP-1TB. Push in Playback/MuteSwitch [6] to activate playback mode. Playback/Mute Switch[6] will illuminate (orange).The unit is now ready to receive audio from the recorder. Press playback on the recorder. Recorded audio can now be heard at the AP-1TB Monitor Speaker[9].This switch must be turn OFF if not being use for playback as the same switch can be used for muting the audio heard at the Monitor Speaker[9] when monitoring audio.

This switch can be used either for muting the sound of the remote microphone heard on the unit's speaker or listening for playback audio from a recorder.

**TLM-W (LE-007)**

Output of microphone	Line Level (0 dB @ 1KΩ)
Frequency Response (Mic)	40 Hz to 15 kHz ± 1 dB
Current Drain (mic)	4 mA
Speaker	2.5", 4W w/ 70V transformer
Dimensions (Face Plate)	6.8"L x 5"W x 0.5"D
Backbox for TLM-W	6.92"L x 5.12"W x 1.62"D
Weight	1.25 lbs

**AP-1TB (LE-001)**

Input sensitivity (from remote microphone)	0.78Vrms
Input sensitivity (talkback microphone)	-45 dB
Monitor power output	1W @ 8Ω
Talkback power output	1W into 70V Line
Audio line output impedance	600Ω
Audio input impedance	10kΩ
Audio frequency response	100 Hz to 10kHz
Headphone impedance	8Ω to 600Ω
Power input	12 Vdc, 500mA
Dimensions	7.9"L x 6.6"W x 2.4"H
Weight	3.25 lbs (1kg)

### WARRANTY

LOUROE ELECTRONICS® warrants that at the time of shipment products manufactured by LOUROE ELECTRONICS® to be free of defects in material and workmanship. Should a defect appear within one year (12 months) from date of shipment, LOUROE ELECTRONICS will, at its sole discretion, repair or replace the defective equipment. This equipment shall not be accepted for repair or return without prior notification by LOUROE ELECTRONICS®.

This warranty does not extend to any Louroe product that has been subjected to improper or incorrect installation, misuse, accident, or in violation of installation instructions provided by LOUROE ELECTRONICS®.

Returned shipments to LOUROE ELECTRONICS® shall be at customer's expense. LOUROE ELECTRONICS® will return the equipment prepaid via best way.

### ABOUT LOUROE ELECTRONICS

Located in Van Nuys, California and 32 years young, Louroe Electronics™ has been the world leading Audio Manufacturer. Our continued growth has resulted from providing innovative products, receiving high customer satisfaction, maintaining strict devotion to quality standards and following the law in Federal, State and Municipal Jurisdiction.

Our "Verifact" line of amplified microphones, complementing base stations, and communication accessories, provide line level output to interface with various digital electronics. Our products are compatible with a wide range of digital video recorders, video cassette recorder, Internet Protocol Network video systems, video servers and computer based recorders.

We are recognized worldwide for our variety of audio monitoring technology. Our products are used in over twenty countries and are utilized in both the private sector and government applications. We currently serve the needs of law enforcement, security, health care, entertainment, hospitality and retail industries and many more.

At Louroe Electronics we maintain rigorous standards to ensure our products provide reliability, durability and excellent performance for our customers' needs. We are proud to continue designing, engineering and manufacturing at our headquarters base in Van Nuys, California.

#### IMPORTANT NOTICE

When this equipment is used as part of an audio monitoring system, the law requires that the public be given notice of AUDIO MONITORING ON THE PREMISES. A decal notice is included with each microphone shipped.



FEDERAL LAW REFERENCES:  
Federal Regulations, US Code, Title 18. Crime and Criminal Procedure, Sec 2510.

