



>>> 2MP, TRIPLE STREAM, DAY/NIGHT, LOW PROFILE IP DOME CAMERA

LOW PROFILE IP DOME CAMERA

IPLP2TF



- > Superior 2MP Full HD, 1920 x 1080 Resolution
- > Day/Night Functionality for Low-light Conditions
- > Highly Efficient H.264 Video Compression which Drastically Reduces Bandwidth and Storage Requirements
- > Progressive Scanning for Sharper Video Motion Images
- > 3.7 Wide Angle, Fixed Lens
- > Triple Video Streams Simultaneously, up to 30-ips, at 1080p Resolution using H.264 and MJPEG Compression
- > Supports a Micro-SD Memory Card Slot for Local, Event Detection Recording
- > Backlight Compensation and Auto White Balance
- > Motion Detection (8 Windows), Privacy Masking (8 Windows) and FTP Image Upload
- > Up to 10 Simultaneous Connections through Remote Monitoring
- > View and Record up to 64 Cameras or View and Manage up to 64 NVR's, with included ATVision IP Remote Management Software
- > ONVIF Compliant for Network Video Interoperability
- > PoE & 12VDC Power Options

LOW PROFILE IP DOME CAMERA

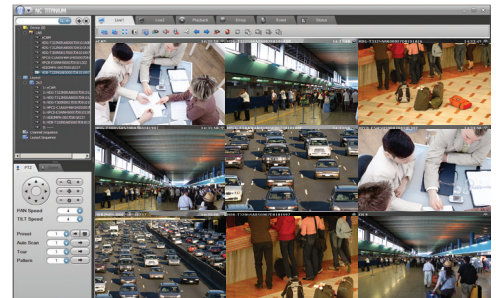
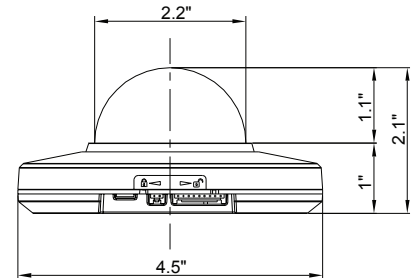
IPLP2TF

IP PRODUCT SERIES

SPECIFICATIONS

MODEL	IPLP2TF	
CAMERA	Image sensor	1/2.8 Progressive scan RGB CMOS
	Active Array	1920(H) x 1080(V)
	Lens	Fixed 3.7mm Lens, F1.8
	Angle of View	89.0°(H) x 46.0°(V)
	Min. illumination	Color: 0.2Lux, B/W: 0.2Lux
SHUTTER	Shutter Speed	1/20,000 ~ 1/30 (Slow shutter 1/15, 1/8 and 1/4)
	Video Compression	Motion JPEG; MPEG-4 Part2; H.264 (MPEG-4 Part 10); Profiles: H.264 HP, MP, and BP, MPEG-4 SP
NETWORK	Video Streaming	Simultaneously H.264(or MPEG-4) and MJPEG Controllable Frame Rate and Bandwidth VBR/CBR H.264 and MPEG-4
	Video Resolutions	320x240 ~ 1920x1080
WORK	Frame Rate	30fps @ All Resolution
	Protocol	TCP/IP, UDP, IPv4/v6, HTTP, HTTPS, QoS, FTP, uPnP, RTP, RTSP, RTCP, DHCP, ARP, Zeroconf, Bonjour
GENERAL	Security	Multi-user authority, HTTPS, IP Filtering, Privacy Zone
	Max. Connection	10
	Compatible 3rd Party VMS	See link on www.atvideo.com
	API Programming Interface	API Supported, Open Platform Compatible: ONVIF
	Alarm In / Out	In : 1 Ext input, Motion Detection, Manual Trigger; Out : 1 Ext output
	Alarm Events	File upload via FTP and HTTP; Notification via E-mail, HTTP and TCP
	Video Buffering	Pre and Post Alarm
	Motion Detection	Yes, max. 8 programmable zone
	Network Time Synchronization	Yes
	SD Recording	Yes, Continuous/Event
	Software Reset	Yes
	Factory Reset	Yes, Button/Web browser
	Auto Recovery	Yes
	Installation Tool	SmartManager, ATVision IP
	Upgrade	Web browser, SmartManager, ATVision IP
GENERAL	Ethernet	RJ-45 10BASE-T/100BASE-TX
	Micro-SD Card	Micro-SDHC, Class 6 or above Rec'd (Max 32GB)
	Operating Temperature	14°F ~ 104°F (-10°C ~ 40°C)
	Operation Humidity	0~80% (non-condensing)
	Power Consumption	DC 12V 375mA, 4.5W / PoE 93mA, 4.5W Power over Ethernet IEEE 802.3af Class0
	Dimensions (W x H x D)	4.5ø x 2.1in (115ø x 55mm)
	Unit Weight	0.52lbs (.235kg)
Conformity Certifications	FCC, CE	

DIMENSIONS



ATVision IP Remote Management Software

- Minimum System Requirements for ATVision IP Software**
- Operating System: Microsoft Windows 7 (or 8) Professional/Enterprise/Ultimate
 - CPU: Intel Core i7; RAM: 4GB; Ethernet connection: 1Gbps
 - Graphics Card: Gaming rated, with 1GB at 1080p for Single Monitor; 2GB at 1080p for Multiple Monitors
 - HDD's: 7200RPM and 64MB cache; 1 separate HDD for Operating System and Software; and 1 (2TB) HDD for Recording (refer to IP storage calculator)

ACCESSORIES

- DB244 Wall Mount
PDA328 Pendant Mount



DB244



PDA328