

NITEK
Twisted Pair Video Network Solutions



NITEK USA 5410 Newport Drive - Rolling Meadows, IL 60008

Twisted Pair Video
Solutions CCTV Hi-
UTPLinks Industrial
Surge Protection Tw
Video Network Sol
CCTV Hi-Tech UTPL
Industrial UTP Sur
Protection Twiste
Network Solutions
Twisted Pair Video
Solutions CCTV Hi-
UTPLinks Industrial
Surge Protection Tw
Video Network Sol
CCTV Hi-Tech UTPL
Industrial UTP Sur
Protection Twiste
Network Solutions
Twisted Pair Video
Solutions CCTV Hi-
UTPLinks Industrial
Surge Protection Tw
Video Network Sol
CCTV Hi-Tech UTPL
Industrial UTP Sur
Protection Twiste
Network Solutions
Twisted Pair Video
Solutions CCTV Hi-
UTPLinks Industrial
Surge Protection Tw
Video Network Sol
CCTV Hi-Tech UTPL
Industrial UTP Sur
Protection Twiste
Network Solutions
Twisted Pair Video
Solutions CCTV Hi-
www.NITEK.net
Solutions CCTV Hi-

Installation and Operation Manual

IPCOAX1

IP Ethernet over COAX Surge Protector

INSTALLATION

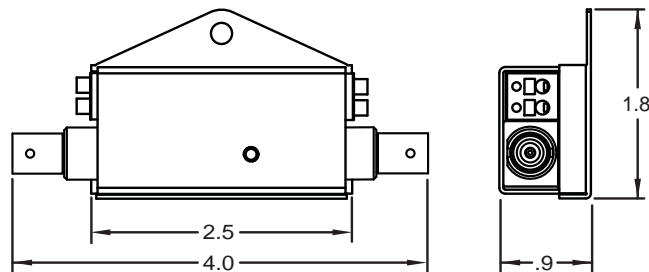
The IPCOAX1 must be properly installed to insure maximum protection. The function of the IPCOAX1 is to allow a surge to be routed to ground and to clamp the protected equipment inputs to a minimum voltage.

There are three key points to remember when installing the IPCOAX1.

First provide a low impedance connection between the IPCOAX1 and your protected equipment. This is best done by keeping the PROTECTED cable connection as short as possible, ideally 3 feet or less.

Second, the system should use a single ground point. Connect the grounding wire of the IPCOAX1 to a single ground point. A single ground point is a proper earth ground to which equipment grounds are connected. Ideally the protected equipment should be isolated from ground.

Finally, the UNPROTECTED cable should not be crossed with the PROTECTED cable. Crossing cables could provide a path for surge currents to bypass the IPCOAX1 protection circuits.



NITEK

US Office:

5410 Newport Dr.
Rolling Meadows, IL 60008
Phone: (847) 259-8900
Fax: (847) 259-1300
Web: <http://www.NITEK.net>

Europe Office (Netherlands):

DeSchans 19-21 2a
8231 KA Lelystad
Tel: +31(0)320 -230005
Fax: +31(0)320 -282486
Web: <http://www.NITEK.nl>