

II - E1500-21

EXIT DEVICE INSTALLATION INSTRUCTIONS

FOR USE WITH K-203 SWITCH KIT, SARGENT 8000 SERIES AND ARROW S3000 & S4000 SERIES EXIT DEVICES
SWITCH MONITORS EGRESS BY PUSHBAR ACTIVATION OF EXIT DEVICE

ELECTRICAL SPECIFICATIONS

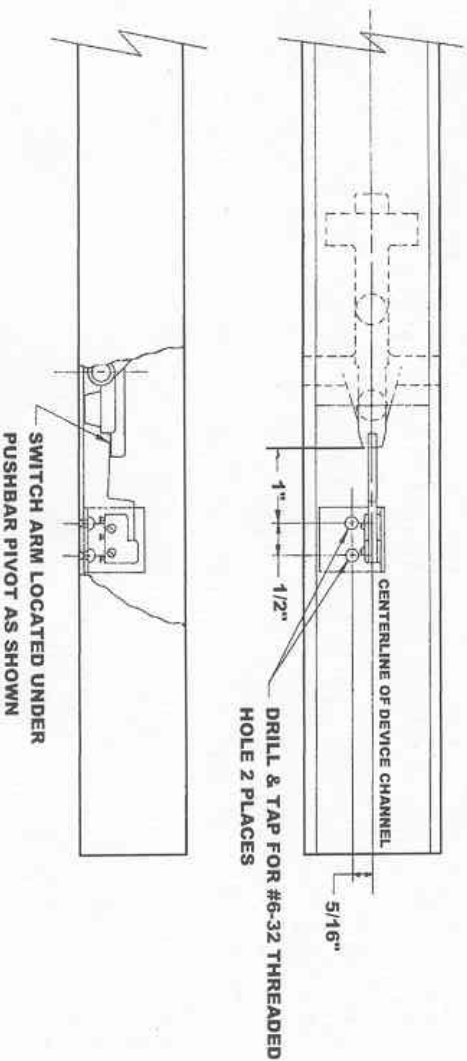
- 2 EACH SPDT MONITOR SWITCH
- CONTACT RATING: 4 AMP @ 250VAC

COLOR CODE FOR WIRES

- SWITCH #1
 - YELLOW WIRE: COMMON
 - RED WIRE: NORMALLY OPEN
 - GRAY WIRE: NORMALLY CLOSED
- SWITCH #2
 - BLACK WIRE: COMMON
 - ORANGE WIRE: NORMALLY OPEN
 - VIOLET WIRE: NORMALLY CLOSED
- WIRE GAUGE: #22 AWG

INSTALLATION INSTRUCTIONS

- STEP 1: REMOVE END COVER FROM CHANNEL.
- STEP 2: LOCATE CENTER OF CHANNEL, THEN MARK DIMENSIONS AS SHOWN.
- STEP 3: AFTER DIMENSIONS ARE MARKED CENTER PUNCH FOR 2 DRILL HOLES.
USE A #36 (106 DIA.) DRILL BIT FOR PROPER TAP DRILL SIZE.
- STEP 4: DRILL HOLES FOR BRACKET, NEXT USING A #6-32 TAPER TAP, TAP THE 2 HOLES.
- STEP 5: DEBURR HOLES SO THAT BRACKET WILL SIT FLAT.
- STEP 6: DEPRESS PUSHBAR THEN MAKE SURE THAT SWITCH ARM IS LOCATED UNDER END OF PIVOT,
THEN SECURE BRACKET WITH PROVIDED HARDWARE.
- STEP 7: SWITCH SHOULD FUNCTION AS FOLLOWS: SWITCH ARM SHOULD BE ACTIVATED WHEN PUSHBAR IS IN RELAXED POSITION.
SWITCH ARM SHOULD DE-ACTIVATE WHEN PUSHBAR IS DEPRESSED.
- STEP 8: MOUNT DEVICE, TERMINATE WIRES ACCORDINGLY WITH PROPER WIRE NUTS OR CRIMPS.



NOTES: 1.) USE MANUFACTURERS TEMPLATING FOR DOOR PREPARATION, INSTRUCTIONS PROVIDED AS SHOWN FOR SWITCH KIT MODIFICATION MODEL K-203



ARCHITECTURAL
CONTROL SYSTEMS,
INCORPORATED

10666 GATEWAY BLVD., ST. LOUIS, MO 63132 (800) 753-5558

REV. 12/10