

## II - E1500-17

### EXIT DEVICE INSTALLATION INSTRUCTIONS

K-127 SWITCH KIT FOR USE WITH 1550K-VD ELR KIT  
ON VON DUPRIN MODEL 33 AND 99 EXIT DEVICES.

#### SWITCH MONITORS LATCH MECHANISM OF EXIT DEVICE

##### ELECTRICAL SPECIFICATIONS

- SPDT MONITOR SWITCH
- CONTACT RATING: 4 AMP @ 250VAC

##### COLOR CODE FOR WIRES

- BLACK WIRE: COMMON
- WHITE WIRE: NORMALLY OPEN
- RED WIRE: NORMALLY CLOSED
- WIRE GAUGE: #22 AWG

##### INSTALLATION INSTRUCTIONS

STEP 1: REMOVE PUSHBAR AND BASE PLATE ASSEMBLY FROM ALUMINUM CHANNEL.

STEP 2: SEPARATE PUSHBAR FROM BASE PLATE ASSEMBLY.

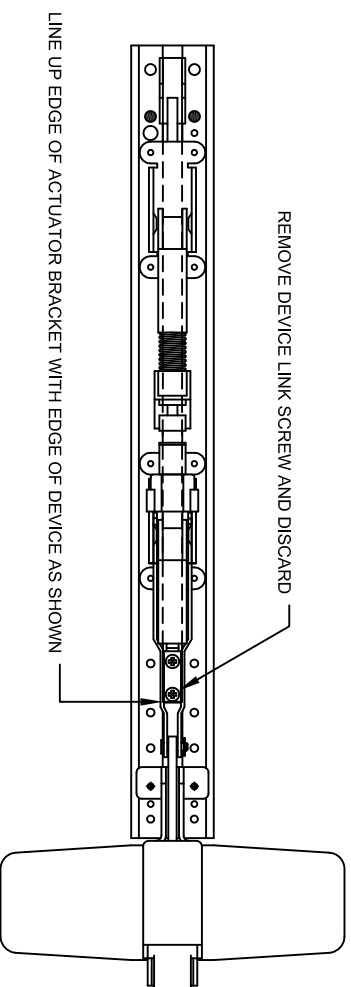
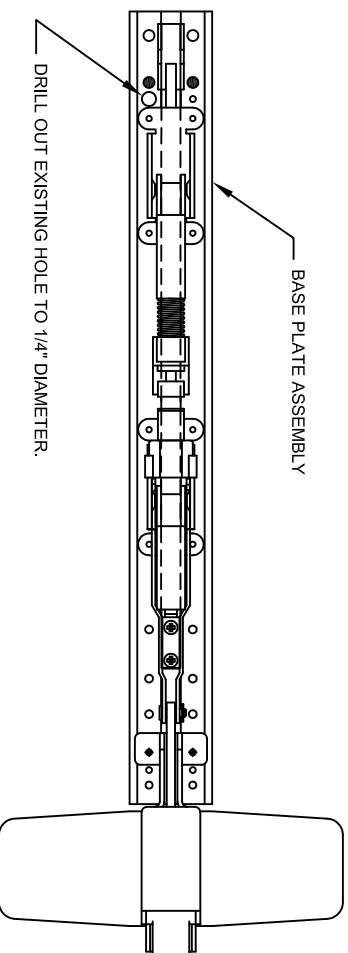
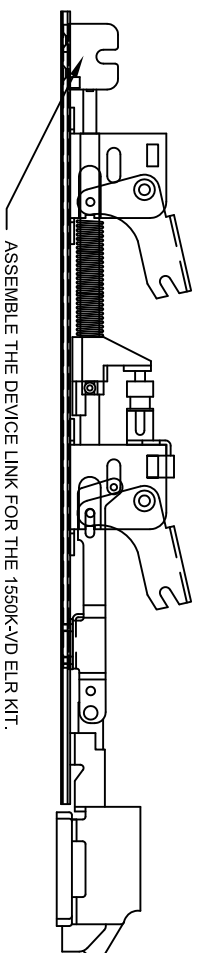
STEP 3: AFTER BASE PLATE ASSEMBLY IS SEPARATED FROM THE DEVICE,

INSTALL THE ELR KIT DEVICE LINK AND FOLLOW INSTALLATION INSTRUCTIONS  
II-E1500-11 1550K-VD ELR KIT STEPS 1 THROUGH 10. AFTER DEVICE LINK HAS  
BEEN PROPERLY INSTALLED PROCEED WITH STEP 4 OF K-127 SWITCH KIT.

STEP 4: DRILL OUT EXISTING HOLE IN BASE PLATE ASSEMBLY TO 1/4" DIAMETER.

THIS HOLE WILL BE USED AS A WIRE ENTRY HOLE FOR THE SWITCH WIRES.

STEP 5: REMOVE DEVICE LINK SCREW FROM FRONT POSITION AND DISCARD.



NOTES: 1.) USE MANUFACTURERS TEMPLATING FOR  
DOOR PREPARATION. INSTRUCTIONS PROVIDED  
AS SHOWN FOR SWITCH KIT MODIFICATION  
MODEL K-127



10666 GATEWAY BLVD., ST. LOUIS, MO 63132 (800) 753-5558

REV. 05/08

STEP 6: MOUNT SWITCH ACTUATOR BRACKET TO BASEPLATE ASSEMBLY AS SHOWN. FOLLOW THE ILLUSTRATION FOR PROPER PLACEMENT OF ACTUATOR BRACKET HARDWARE.

HARDWARE MUST BE INSTALLED IN ORDER AS SHOWN.

STEP 7: SECURE SWITCH ASSEMBLY TO BASEPLATE. USE EXISTING HOLES IN DEVICE AS SHOWN. USE THE TWO EACH #6-32 X .25 RHMS TO MOUNT SWITCH BRACKET. SCREWS ENTER FROM BOTTOM OF BASEPLATE AND THREAD INTO BRACKET. MAKE SURE ROLLER END OF SWITCH IS AGAINST ACTUATOR ASSEMBLY.

STEP 8: FEED WIRES THROUGH EXISTING HOLE IN BASEPLATE ASSEMBLY. THEN ROUTE WIRES BACK THROUGH THE 1/4" DIAMETER HOLE NEAR END OF BASE PLATE AS SHOWN

STEP 9: DEPRESS LATCH AND MAKE SURE SWITCH CONTACT IS RELEASED WHEN ACTUATOR MOVES AWAY FROM ROLLER OF SWITCH.

STEP 10: SLIDE PUSHBAR AND BASE PLATE ASSEMBLY INTO ALUMINUM CHANNEL.

STEP 11: PROCEED WITH FINAL INSTALLATION OF 1550K-VXD ELR KIT FOLLOW. STEPS 11 THROUGH 19 OF II-E1500-11 1550K-VXD ELR KIT INSTALLATION INSTRUCTIONS. THEN PROCEED WITH FINAL STEP OF K-127 SWITCH KIT.

STEP 12: MOUNT DEVICE. TERMINATE WIRES ACCORDINGLY WITH PROPER WIRE NUTS OR CRIMPS.

