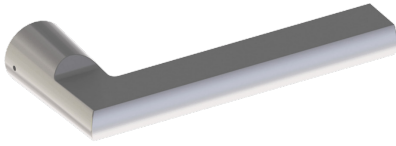


HAGER EXIT DEVICE LEVER OPTIONS



CHARLES LEVER

Available on:

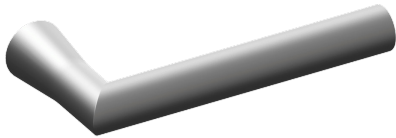
- 4500 Series Trim (45BE, 45CE, 45DT, 45NL)
- 4500 Series Electrified (45ET)



JOHNSTON LEVER

Available on:

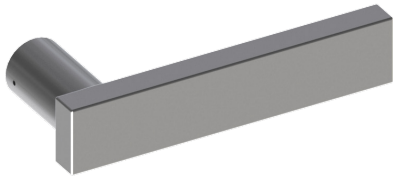
- 4500 Series Trim (45BE, 45CE, 45DT, 45NL)
- 4500 Series Electrified (45ET)
- Handed - Must be ordered LHR or RHR



JOSHUA LEVER

Available on:

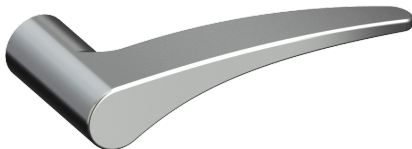
- 4500 Series Trim (45BE, 45CE, 45DT, 45NL)
- 4500 Series Electrified (45ET)



LOUIS LEVER

Available on:

- 4500 Series Trim (45BE, 45CE, 45DT, 45NL)
- 4500 Series Electrified (45ET)



WARREN LEVER

Available on:

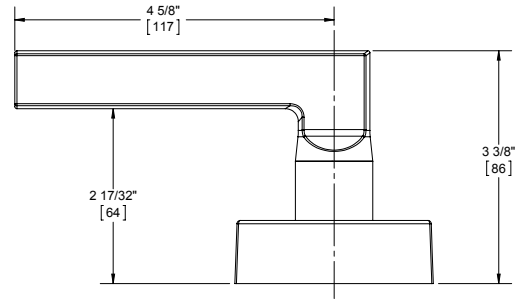
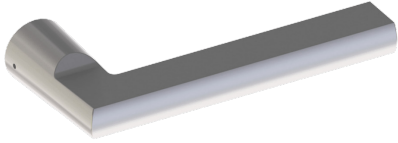
- 4500 Series Trim (45BE, 45CE, 45DT, 45NL)
- 4500 Series Electrified (45ET)
- Handed - Must be ordered LHR or RHR



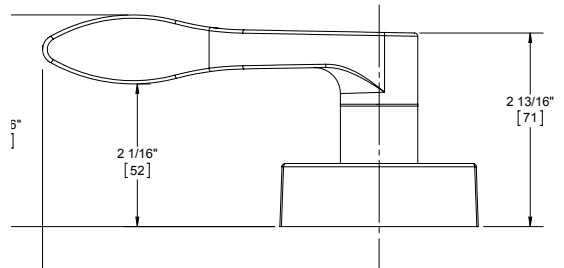
EXIT DEVICES

4500 SERIES ESCUTCHEON TRIM - LEVER OPTIONS

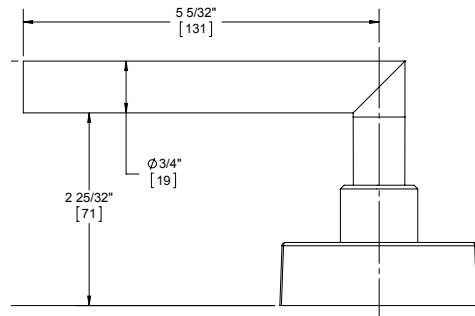
CHARLES LEVER



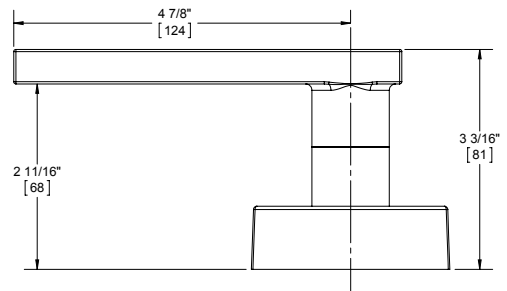
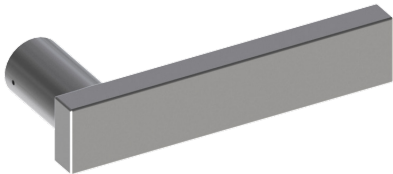
JOHNSTON LEVER



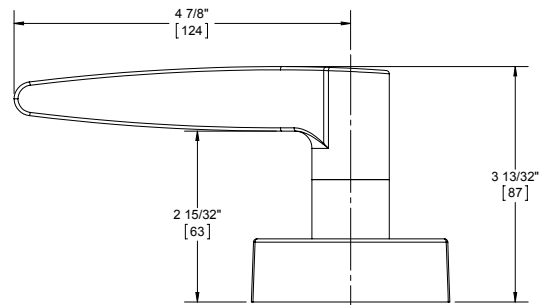
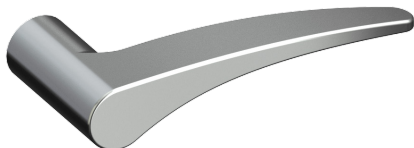
JOSHUA LEVER



LOUIS LEVER

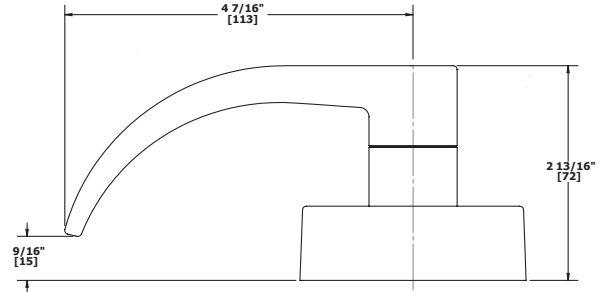
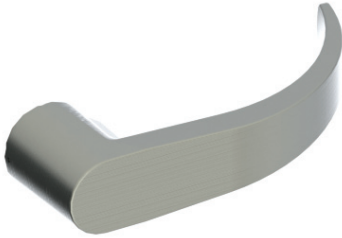


WARREN LEVER

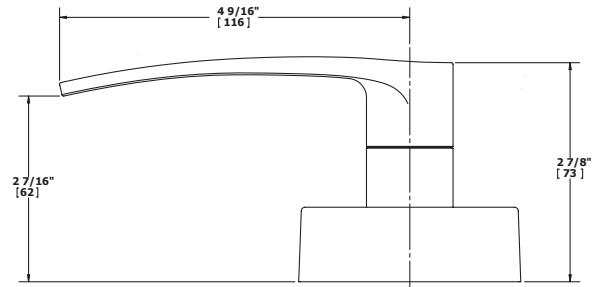


4500 SERIES ESCUTCHEON TRIM - LEVER OPTIONS

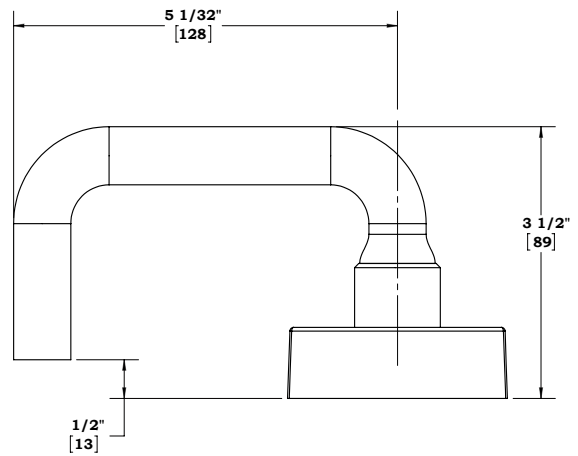
ARCHER LEVER



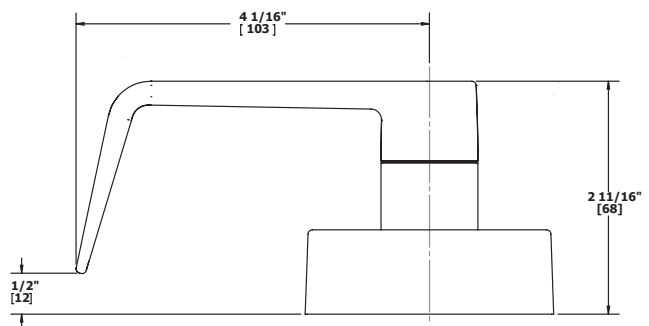
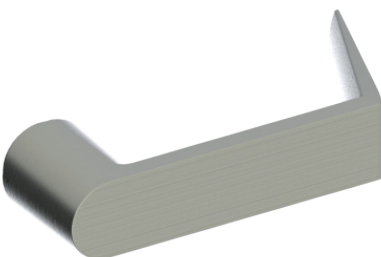
AUGUST LEVER



WILLIAM LEVER



WITHNELL LEVER



EXIT DEVICES

4500 SERIES ESCUTCHEON TRIM



45BE

Blank Escutcheon

Function: 14 - Always operable (passage)
Escutcheon: 2-7/8" x 10-3/4" (73 mm x 273 mm)
Finishes: US3, US4, US10, US10B, US26, US26D



45CE

Cylinder Escutcheon

Function: 08 - Key locks or unlocks lever
Escutcheon: 2-7/8" x 10-3/4" (73 mm x 273 mm)
Finishes: US3, US4, US10, US10B, US26, US26D
Cylinder: Mortise cylinder, 3902, sold separately



45DT

Dummy Trim

Function: 02 - Pull when device is dogged down
Escutcheon: 2-7/8" x 10-3/4" (73 mm x 273 mm)
Finishes: US3, US4, US10, US10B, US26, US26D



45NL

Night Latch

Function: 03 - Key retracts latchbolt
Escutcheon: 2-7/8" x 10-3/4" (73 mm x 273 mm)
Finishes: US3, US4, US10, US10B, US26, US26D
Cylinder: Rim cylinder, 3901, with long tailpiece sold separately



45ET

Electrified Trim

Function: 09 - Key locks or unlocks lever. Lever is locked when key is removed.
Escutcheon: 2-7/8" x 10-3/4" (73 mm x 273 mm)
Finishes: US3, US4, US10, US10B, US26, US26D
Cylinder: Mortise cylinder, 3902, sold separately
Electrical: EU (Fail Secure) or EL (Fail Safe)
Voltage AC/DC: 12V or 24V

