

MAXPRO® NVR PE (Professional Edition)

www.honeywellvideo.com

ENTERPRISE NETWORK VIDEO RECORDER (NVR)

Honeywell's MAXPRO NVR PE is an open, flexible and scalable Enterprise IP video surveillance system. Utilizing Honeywell's high definition cameras, MAXPRO NVR PE is a powerful, high definition IP recording system with support for standards, remote viewing clients for enterprise installations. MAXPRO NVR PE is an open platform and supports broad third party device integrations with support for PSIA and ONVIF (including Profile S devices), real time streaming protocol (RTSP) standard and native device integrations including 360° camera support.

MAXPRO NVR PE provides easy to use desktop clients, web client and mobile apps—MAXPRO Mobile. The Web Client is supported from any standard Mac or PC browser and requires no additional install, provides the value of reduced setup, maintenance and improved compatibility. The interface is simple and intuitive with all the functionality and features that users need for daily surveillance operations, such as live view and playback of recorded video.

MAXPRO NVR PE comes pre-installed with all required software and is also pre-licensed for 32 channels. This, along with an easy 3-Click* wizard to live video for auto configuration, makes installing an IP system quick and efficient. Simple and logical configuration pages make setup a breeze even for the novice installer. It supports simultaneous recording, remote viewing, search and system management for up to 32 IP cameras including high definition formats with easy to use clients. End users can view live video while simultaneously performing searches. MAXPRO NVR PE also offers advanced features. Honeywell's patented Video Surround feature provides the ability to track subjects of interest as they move between areas covered by adjacent cameras by simply double-clicking on the panel where the subject is currently visible. Features such as the powerful calendar, preview search options and film strip view allow for rapidly searching video for scenes of interest and then quick export method transfers video to an authenticated video clip playable through Windows® Media player.

The MAXPRO NVR PE user interface is based on Honeywell's flagship MAXPRO VMS user interface which offers a feature-rich user experience and is common across the MAXPRO NVR Family. Utilization of this familiar interface allows for the "learn one, know them all" concept that allows for familiarity across a broad range of Honeywell products saving training costs. Multiple MAXPRO NVRs can be deployed for system expansion using a distributed architecture and integrated with the MAXPRO Viewer multi-site software or MAXPRO VMS enterprise video management system.

The MAXPRO NVR PE unit is a solution that provides the processor and RAID enclosure in one chassis, resulting in both space and cost savings. RAID 5 and 6 support is available through a hardware-based RAID controller that removes the loading on the processor that software RAID can bring. A convenient web browser interface is used to manage the RAID controller. The unit is rack mountable and features dual redundant power supplies and mirrored 2.5" operating and application drives for high availability. It has 8 removable storage drives with more reliable and robust SAS hard drives used for video storage. Dual 1 GB NICs are optimized to separate record and viewing data to ensure 100% recording and smooth playback even with multiple client connections.

**With default settings and in a local area network*

Market Opportunities

The continual growth of IP networks and the demand for high definition video have led to the need for convergence of building security systems and IT systems for many companies across the globe. This has resulted in a strong demand for an all-IP end-to-end enterprise security system deployment. MAXPRO NVR PE provides an open, flexible and scalable system with operational power to address the needs of a wide variety of enterprise applications. The 2U rack mount small form factor, high performance, and reliability of the MAXPRO NVR PE unit makes it an ideal solution in installations where digital video is mission critical.



MAXPRO NVR PE
Rev B Server

HD



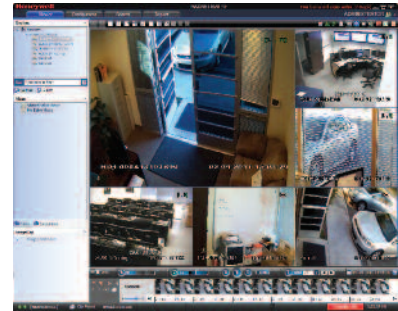
FEATURES

Software

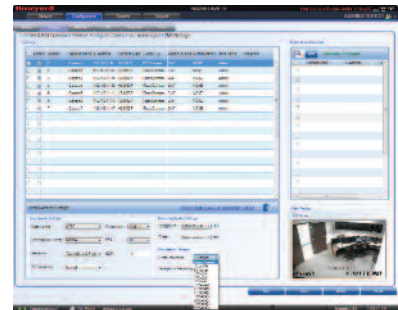
- MAXPRO NVR PE allows local or remote operations including live and recorded video monitoring, configuration and system management in a single desktop client interface.
- Support for Web Client on Windows PC (Internet Explorer, Chrome and Firefox browsers) and Mac (Safari browser). Supports live, playback/search of recorded video for up to 1080p resolution on all cameras, taking snapshots and viewing presets for PTZ cameras.
- Support for mobile monitoring clients on iOS and Android with MAXPRO Mobile apps
- Broad device integrations: Honeywell cameras and encoders, third party devices with support for standards—PSIA and ONVIF (including Profile S devices), RTSP standard and native device integration including 360° camera support.
- Feature-rich, user-friendly Windows based interface to view HD video and configure system settings.
- Easy 3-click* wizard to set up the system with auto-configuration and auto-discovery of IP cameras, recording and monitoring configuration—without any IP video expertise.
- Multi-zoom views on HD video. Example: Zoom in on a cash register in one view of the HD camera while at the same time monitoring the cash operator in the zoom out view of the HD camera.
- Ability to investigate events and alarms by simultaneously viewing alarm videos at various stages. For every alarm, users can view the video captured during pre-alarm, on-alarm, and post-alarm, and also view live video from the camera which triggered the alarm.
- Enriched video viewing experience through the intuitive video rendering engine that optimizes CPU utilization by altering the video frame rate.
- Honeywell's patented Video Surround feature simplifies the process of tracking subjects through a set of surrounding cameras.
- Create, save and name salvos under My Salvos or Shared Salvos.
- IP PTZ control and digital zoom on fixed cameras. 360° immersive viewing experience providing heightened situational awareness and increased video surveillance coverage.
- Fast search by date/time, time line, time jump, bookmarks,calendar preview, film strip view and events. Increase productivity with more efficient search/investigation: Get to the relevant video in few clicks without having to review hours of recordings.
- Event history and operator log reporting with export in .pdf, Crystal Reports, Excel or Word.
- Capture and export clips and still images in simple .wmv and .bmp formats. Clips signed with digital signature for authentication.
- Supports multiple client connection to NVR Server.
- Separate event video and general recorded video retention times.
- Email notification on camera, system and operator events.
- Role-based operator privileges supporting Windows and local users.
- Flexible Motion detection (VMD) options with Server (Smart VMD) or Camera based motion events support. Reduced false alarms with object based motion detection analytics with Smart VMD.
- Advanced security features with encryption support for communication between desktop client to NVR and secure https login for Web Client.
- Keyboard control with UltraKey Plus and UltraKey Lite over Ethernet
- Local and multi-language support
- Multi-site support with MAXPRO Viewer
- Integration with MAXPRO VMS
- Integration with WIN-PAK® and Pro-Watch® Access Control Systems

Hardware

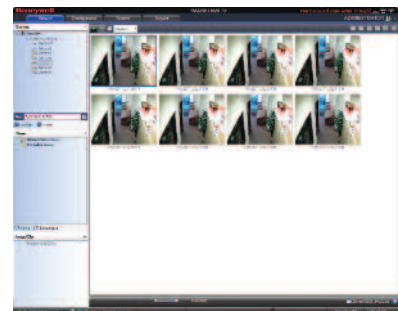
- Record and remotely monitor up to 32 channels at 960 fps @ 4CIF/VGA or 960 fps @ 720p HD or 640 fps @ 1080p HD per MAXPRO NVR PE. Network bandwidth/throughput supported per NVR with Incoming: 120 Mbps, Outgoing: 120 Mbps providing a Total: 240 Mbps.
- Supports One-Way Audio (for specific IP cameras) with live and playback on desktop clients for up to 32 IP channels.
- Includes dual 1 GB NICs optimized to separate record and viewing data to ensure 100% recording and smooth playback even with multiple client connections.
- Redundant power supplies and separate RAID 1 Operating System 2.5" drives from storage drives.
- 8 x RAID 5/6 removable storage drives
- Reliable and robust SAS hard drive options (1 TB, 2 TB, 3 TB, 4 TB hard drives) providing raw storage capacities of 32 TB.
- Includes HDMI cw DVI-D to HDMI adapter or VGA or DVI-D or Display port for single monitor support for local configuration client
- 2U rack mount form factor with optional locking front bezel. Rack rails included for use with four post racking systems.



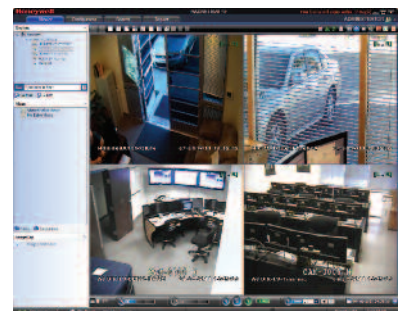
6 Split



Event Record



Preview

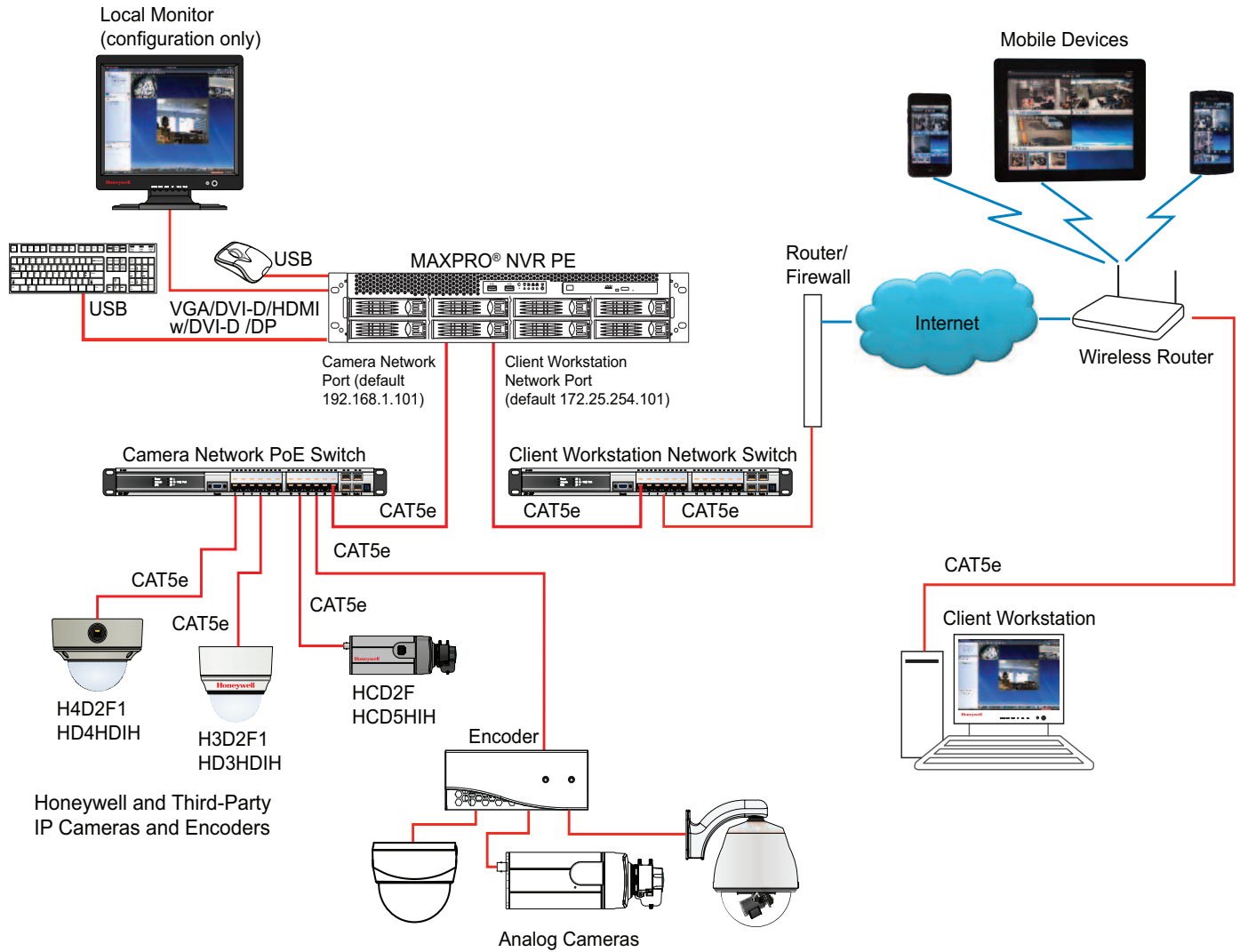


Quad

MAXPRO® NVR PE

www.honeywellvideo.com

SYSTEM DIAGRAM



SPECIFICATIONS

Operational		Operational	
MAXPRO NVR PE Software - Version 3.1 or above		MAXPRO NVR PE Hardware	
Database	Microsoft SQL Express 2008 R2	Processor	Intel® Core™ i7-4770, 3.4 GHz
Operating system	Windows Embedded Standard 7 SP1, 64-bit	Memory	8 GB
Image compressions supported	MPEG-4, H.264	Power supply	Dual Redundant 850 W
Supported Honeywell IP cameras and encoders	Supports Performance Series IP, equalP® Series cameras including high definition. Refer to www.honeywellsecurity.com/hota	OS hard drive	2x 2.5" 250 GB, RAID1
Supported third party IP cameras and encoders	Refer to the Honeywell Open Technology Alliance for a comprehensive list of compatible products to which this device is integrated. www.honeywellsecurity.com/hota	Storage capacities	4 TB to 32 TB raw storage
Audio Support	1-way audio for specific IP camera models. Refer to www.honeywellsecurity.com/hota	Storage hard drive options	8 field upgradable 1 TB or 2 TB or 3 TB or 4 TB SAS hard drive options
Maximum number of desktop client connections	18 per unit from 9 remote workstations	Optical	22x DVD-RW
Salvo layouts	Desktop Client - Full, 2x2, 1x5, 3x3, 2x8, 1x12, 4x4. Web Client - 2x2, 1x1, 1x2, 1x3	Network	Dual 1 Gigabit Ethernet
Picture controls per camera	Sharpness, blur, brightness, contrast, hue, saturation, maintain aspect ratio, stretched, original size and picture mirror	Chassis with optional locking bezel	2U 8 bay including rack mount kit
OSD	Concealed text option	RAID card	6 GB/s SAS/SATA RAID Card, PCI Express x8, supports RAID levels up to 6+0
Playback controls per camera	FWD/REV Play x (1, 2, 4, 8, 16) Slow FWD/REV Play x (1/2, 1/4, 1/8)	Rear Panel Connections	
Search types	Time/date timeline, time jump FWD/REV, bookmarks, calendar preview, film strip and event search	Mouse and keyboard	2x USB
Recording schedule	Constant and event based with H/M/D and holiday and exception days	USB	2x Front, 4x Back
Recording methods per camera	Constant, event based and user activated	Network	2x RJ45
Live settings per camera	Compression format, resolution and frame rate	Monitor output	HDMI cw DVI-D to HDMI adapter or VGA or DVI-D or Display port
Record settings per camera	Same as live or reduced frame rate	Electrical	
Clip format	WMV with digital certificate for authentication playable with Windows media player	Input voltage	110/220 VAC 50/60 Hz
Video clip authentication	Digital signature, verification tool provided	Operating voltage	110V/220V Auto Sensing
Motion detection location	Camera based for supported models or Server based (Smart VMD) for all models(except 360 fisheye/panomorph views)	Power consumption	820W 1+1 Dual Redundant
Event recording	Pre and post duration setting	Mechanical	
Operator reporting	Per user, configurator, session and viewer	Construction finish	Chassis: Black matte paint
Event report	Per camera or recorder events	Dimensions (w x h x d)	16.9" x 3.5" x 26" 430 mm x 88.8 mm x 660 mm
Operators	1024	Weight	Shipping: 65 lbs / 29.5kg
Recording and Remote Monitoring Performance		Environmental	
Max Video Streams Support	960 fps @ 4CIF/VGA or 960 fps @ 720p HD or 640 fps @ 1080p HD. 1-way audio for up to 32 IP channels. Network bandwidth/throughput - Incoming: 120 Mbps, Outgoing: 120 Mbps, Total: 240 Mbps	Temperature operating	32°F to 95°F (0°C to 35°C)
Server based VMD (Smart VMD) performance - channels supported	Channels at max fps: 32 ch at 960 fps @ 4CIF/VGA or 32 ch at 960 fps @ 720p or 16 ch at 640 fps @ 1080p. All Channels at fps: 32 ch at 960 fps @ 4CIF/VGA or 960 fps @ 720p or 320 fps @ 1080p. Note: Local client - only for configuration	Relative Humidity	5-95% non-condensing
		Regulatory	
		Emissions	FCC part 15B Class A
		Safety	ANSI / UL 60950-1; CAN/CSA C22.2 No 60950-1
		Country of Origin	Assembled in the USA
		Warranty	
		Warranty and Advanced Replacements	Refer to http://www.honeywellvideo.com/support/warranty/index.html

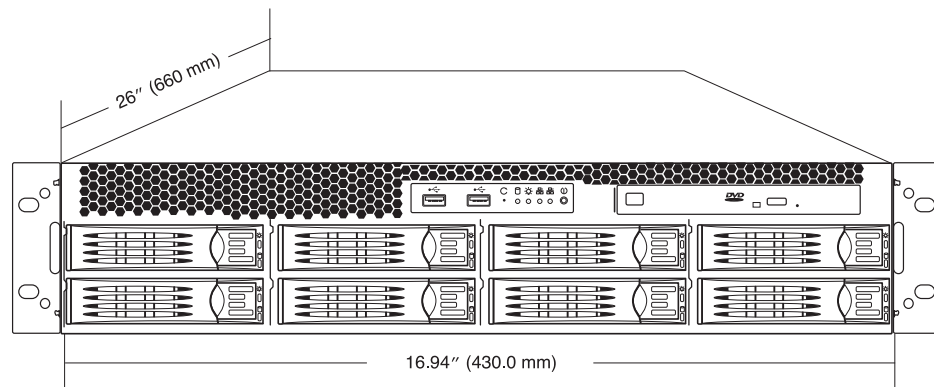
SPECIFICATIONS

MAXPRO NVR Client Only Workstation – Minimum Specifications	
Processor	Intel [®] Core [™] 2 Duo Processor E6750 2.66 GHz or Quad Core Intel [®] Xeon [®] E5405 2.0 GHz
System Memory (RAM)	Minimum 4 GB or Higher
OS & Application – Hard Disk Drive or Partition	Minimum 100 GB Partition drive or separate hard drive
Graphics Adapter	512 MB or higher Display Card for Dual Monitor – DirectX 9 Compatible
Network Interface	Minimum – 1 Gigabit network interface card
Optical Drive	DVD-RW
Monitor Resolution	Video resolution 1280x1024 pixels, 32 bit
Keyboard/Mouse	102-key keyboard and mouse
Operating System Options	Microsoft [®] Windows 7 Professional SP1 (32-bit and 64-bit), Microsoft [®] Windows Server 2008 R2 SP1

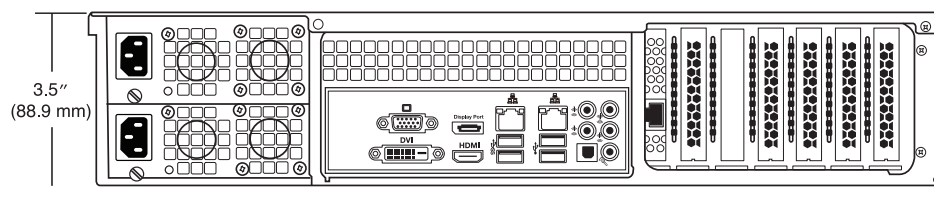
Note: The minimum specifications above are recommended for systems with fixed or PTZ cameras only. For systems with multiple 360 cameras using full immersive experience with dewarping and playback requires superior workstation specifications than above.

SYSTEM DIMENSIONS

Front View



Rear View



MAXPRO® NVR PE

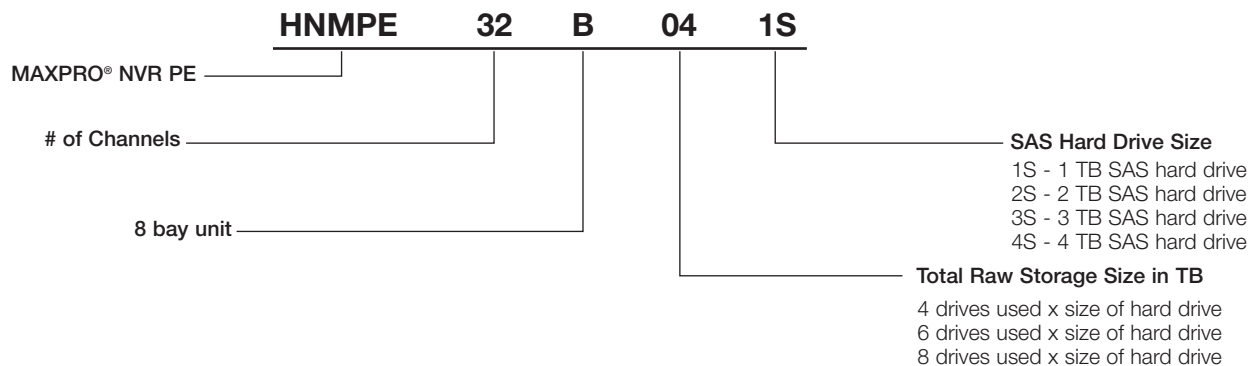
www.honeywellvideo.com

ORDERING

MAXPRO NVR PE		
HNMPE32B041S	MAXPRO NVR PE, 32CH, 4X1 TB SAS HARD DRIVE, 8D	1.819 TB RAID 6, 2.728 TB @ RAID 5
HNMPE32B061S	MAXPRO NVR PE, 32CH, 6X1 TB SAS HARD DRIVE, 8D	3.638 TB RAID6, 4.547 TB @ RAID 5
HNMPE32B081S	MAXPRO NVR PE, 32CH, 8X1 TB SAS HARD DRIVE, 8D	5.457 TB RAID 6, 6.366 TB @ RAID 5
HNMPE32B082S	MAXPRO NVR PE, 32CH, 4X2 TB SAS HARD DRIVE, 8D	3.368 TB RAID 6, 5.457 TB @ RAID 5
HNMPE32B122S	MAXPRO NVR PE, 32CH, 6X2 TB SAS HARD DRIVE, 8D	7.276 TB RAID 6, 9.095 TB @ RAID 5
HNMPE32B162S	MAXPRO NVR PE, 32CH, 8X2 TB SAS HARD DRIVE, 8D	10.915 TB RAID 6, 12.734 TB @ RAID 5
HNMPE32B123S	MAXPRO NVR PE, 32CH, 4X3 TB SAS HARD DRIVE, 8D	5.456 TB RAID 6, 8.185 TB @ RAID 5
HNMPE32B183S	MAXPRO NVR PE, 32CH, 6X3 TB SAS HARD DRIVE, 8D	10.913 TB RAID 6, 13.642 TB @ RAID 5
HNMPE32B243S	MAXPRO NVR PE, 32CH, 8X3 TB SAS HARD DRIVE, 8D	16.370 TB RAID 6, 19.099 TB @ RAID 5
HNMPE32B164S	MAXPRO NVR PE, 32CH, 4X4 TB SAS HARD DRIVE, 8D	7.276 TB RAID 6, 10.914 TB @ RAID 5
HNMPE32B244S	MAXPRO NVR PE, 32CH, 6X4 TB SAS HARD DRIVE, 8D	14.552 TB RAID 6, 18.189 TB @ RAID 5
HNMPE32B324S	MAXPRO NVR PE, 32CH, 8X4 TB SAS HARD DRIVE, 8D	21.828 TB RAID 6, 25.466 TB @ RAID 5

Accessories	
HNMPEBHD1S	1 TB SAS Upgrade Kit, MAXPRO NVR PE, Rev B Server
HNMPEBHD2S	2 TB SAS Upgrade Kit, MAXPRO NVR PE, Rev B Server
HNMPEBHD3S	3 TB SAS Upgrade Kit, MAXPRO NVR PE, Rev B Server
HNMPEBHD4S	4 TB SAS Upgrade Kit, MAXPRO NVR PE, Rev B Server
HNMPEBBZL	Front Locking Bezel, MAXPRO NVR PE, Rev B Server

MAXPRO NVR PE - Part Number Lookup



For more information:

www.honeywell.com/security

Automation and Control Solutions

Honeywell Security Products Americas
 2700 Blankenbaker Pkwy, Suite 150
 Louisville, KY 40299
 1.800.323.4576
 www.honeywell.com

