

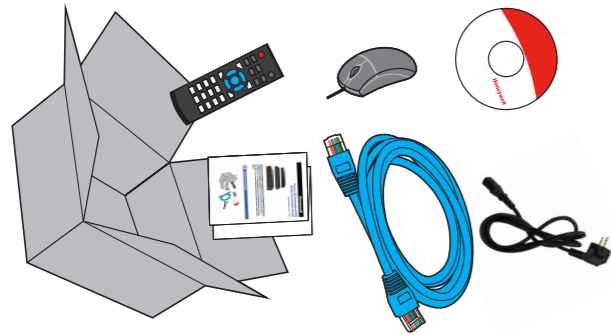
Embedded NVR Quick Connection Guide

Document 800-22745V1 -01/2018



Thank you for purchasing a Honeywell Performance 4K Embedded NVR. Follow the instructions in this guide to install and log in to your NVR. For instructions on configuring any cameras, refer to the [Performance 4K Embedded Network Video Recorder User Guide](#) on the software and documentation CD that came with your NVR. If you require additional assistance, please call the number shown below.

1 Unpack Everything

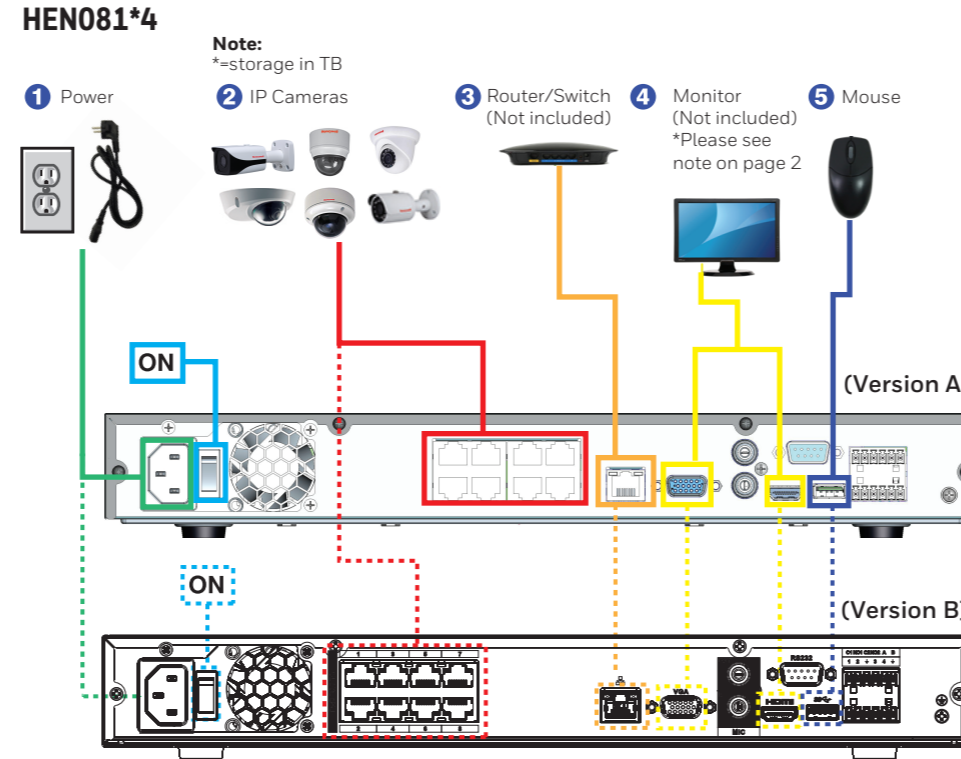


Compatible Cameras

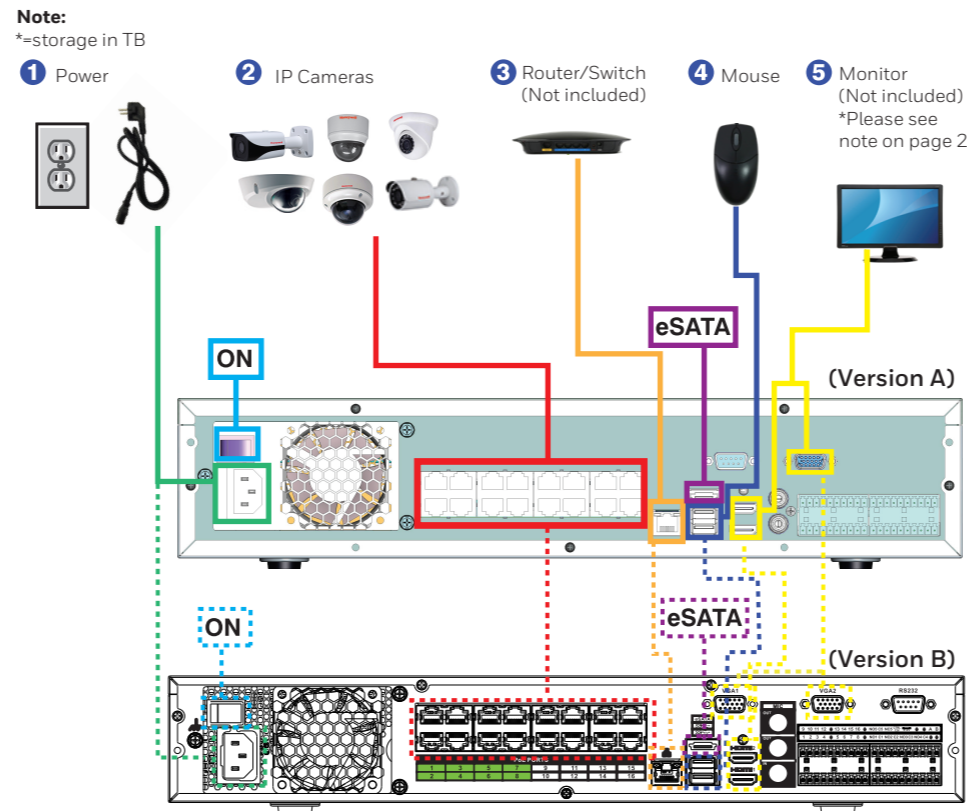
	H4D3PRV2; H4W2PRV2; H4W4PRV2		HBW2PR1; HBW4PR1; HBD8PR1 HBD2PER1 HBW4PER1		HEW2PR1; HEW4PR3
	H2W2PRV3; H2W4PRV3		HEW2PRW1; HEW4PRW3; HED8PR1		HEW2PR2; HEW4PR2
	H4D3PRV3; H4W4PRV3; H4D8PR1 H4W4PER2 H4W4PER3		HED2PER3; HEW4PER3		HED1PR3; HED3PR3
	HBD3PR2; HBW2PR2; HBW4PR2 HBW4PER2		HDZP304DI		HBD1PR1; HBD3PR1
	HFD5PR1		HDZP252DI		

2 Connect your system

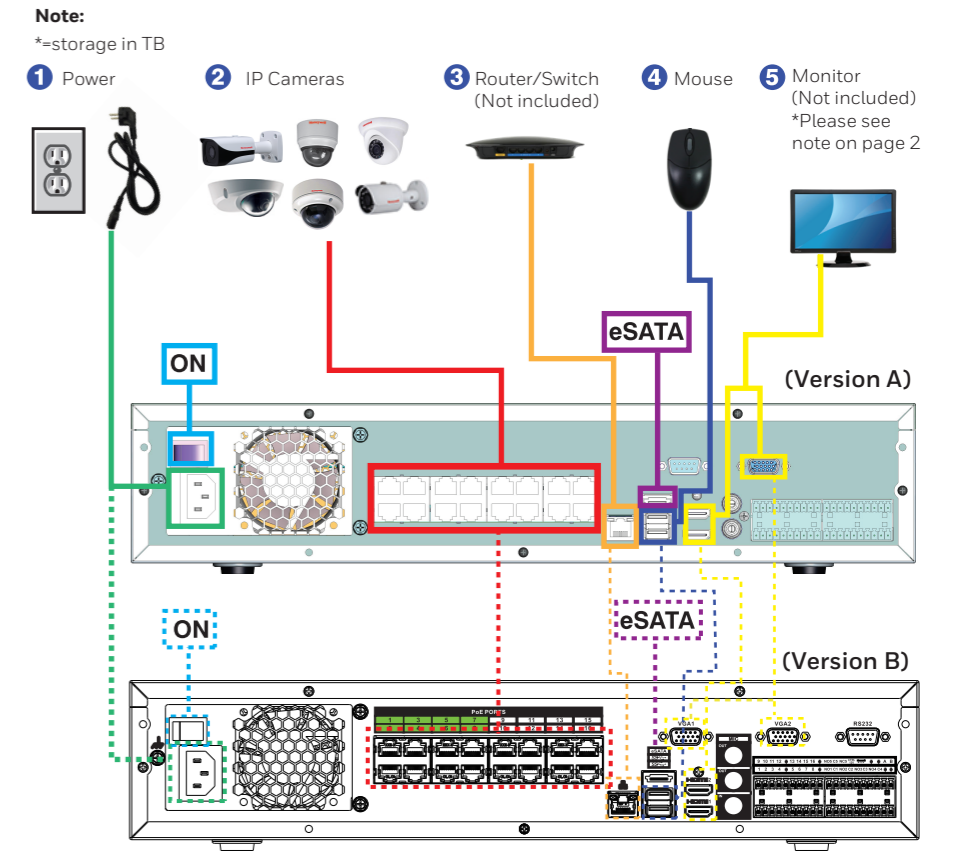
Follow the diagram below to connect your NVR system.



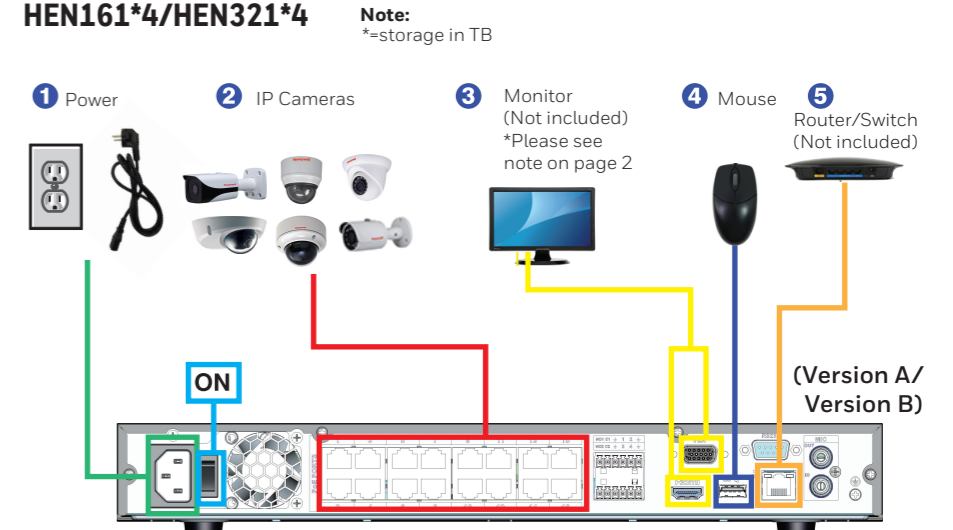
HEN162*4/HEN322*4/HEN642*4



HEN163*4/HEN323*4/HEN643*4



HEN161*4/HEN321*4



3 Using the Mouse



- 1 Left mouse button**
 - Click to open the Navigation bar.
 - During split-screen display: Double-click an individual channel to view it. Double-click it again to return to split-screen mode.
- 2 Right mouse button**
 - During Live view: Right click anywhere on the screen to open the Quick menu.
 - Within systems menus: Right click to exit the menus.
- 3 Scroll wheel**
 - Use to change menu options.

4 Device Initialization

When the NVR has booted up, the system enters the Device Initialization page.

1 Enter Password

Enter the password according to the password requirements. The default username is **admin**.
Note: You can use the USB mouse to change the password. Click to switch the input mode between numbers and English letters; click **Shift** to change between lowercase and uppercase.

2 Unlock Password

Draw the unlock patterns.
Note: You will be asked to draw two times of patterns. Make sure they are the same.

3 Password Protection

Enter an eMail address. It is used when you want to reset the password. Enter the Security Questions.
Note: You have to enter all the three security questions.

NOTE: Users can later on use either the password or password pattern to log in to the system.

5 Startup Wizard

On first log in, the Setup Wizard appears.

1 Click **Next** to continue with the Setup Wizard.

In the Setup Wizard, you can do the following:

- Configure the general information of this NVR device.
- Configure the date and time.
- Configure the holidays.
- Configure the network settings (TCP/IP information)
- Search for and add IP cameras.
- Configure the Schedule (Rec and snapshot)

2 Make changes in each window, click **Apply**, and then click **Next Step** to navigate to the next window in the Setup Wizard.

3 Click **Finish** complete the process. A message appears confirming that the setup is complete. Then click **Yes**.

6 Connect to Remote Devices

If you did not connect to IP Cameras when using the Setup Wizard, use the **Camera** configuration window under **Setting** in the **Main Menu**.

1 Click **Camera** under Setting in the **Main Menu** to enter the **Registration** configuration window.

2 Connect a camera to a router or switch on the same network as the NVR.

3 Click **Device Search**.

4 Check the cameras you want to add, then click **Add**.

5 If the Status indicator is green, then the camera is connected, and no further configuration is required. Click **Next** to save the changes. If the Status indicator is red, then click to update the following information as needed.

NOTE:

The default resolution for the NVR is 1024 x 768. We recommend that you change the resolution to the maximum resolution the monitor can support. Go to **Setting > Display** to change the resolution. You must restart the NVR to activate this change. For best video performance, we recommend using a monitor capable of displaying 1920 x 1080 pixels.

7 View Recorded Video

1 Right-click in the main viewing mode, and then choose **Search**.

Calendar

2 Use the drop-down menus to select the channels you want to play.

3 Use the calendar on the right to search for the exact date for playback.

4 Click the playbar at the bottom to select the exact playback time.

8 Local Network Setup

1 Configure the network setting as either **Fixed IP** or **DHCP**.

2 Ensure that the NVR can connect to the WAN.

Click to edit TCP/IP of the NVR.

NOTE: Change the default static IP address for the NVR and each added camera to avoid conflicts when adding additional IP cameras.

3 Click the **DDNS** to open the **DDNS** configuration page.

Select **Honeywell DDNS**, and enable the DDNS function. For a Custom domain name, enter your private domain name here.

Click **Test** to test the connection.

9 Router Port Mapping Setup

Port Range					
Application	Start	End	Protocol	IP Address	Enabled
HTTP	80	to 80	Both	192.168.1.108	<input checked="" type="checkbox"/>
TCP	37777	to 37777	Both	192.168.1.108	<input checked="" type="checkbox"/>

1 Map the TCP port to be 37777

2 Map the HTTP port to be 80

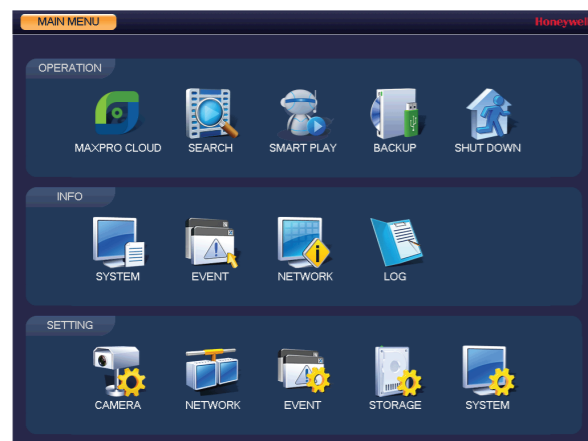
NOTE: The IP Address should be the NVR's IP address.

10 Connect to MAXPRO Cloud®

NOTE: Connecting to MAXPRO Cloud requires a MAXPRO Cloud account. Please contact Honeywell Customer Service for MAXPRO Cloud Registration information.

Your NVR comes configured in Standalone mode. Use the Main Menu to connect to MAXPRO Cloud.

1 Find **MAXPRO CLOUD** under **OPERATION** in the Main Menu.



2 Click to select **MAXPRO Cloud**. For more about MAXPRO Cloud, please refer to the **MAXPRO Cloud Everything You Need to Know** document.

Regulatory Statements

Information to the User: This equipment has been tested and found to comply with the limits for a Class B digital device, pursuant to part 15 of the FCC Rules. These limits are designed to provide reasonable protection against harmful interference in a residential installation. This equipment generates, uses, and can radiate radio frequency energy and, if not installed and used in accordance with the instructions, may cause harmful interference to radio communications. However, there is no guarantee that interference will not occur in a particular installation.

If this equipment does cause harmful interference to radio or television reception, which can be determined by turning the equipment off and on, the user is encouraged to try to correct the interference by one or more of the following measures:

- Reorient or relocate the receiving antenna.
- Increase the separation between the equipment and receiver.
- Connect the equipment into an outlet on a circuit different from that to which the receiver is connected.
- Consult the dealer or an experienced radio/TV technician for help.

NOTE Changes or modifications not expressly approved by the party responsible for compliance could void the user's authority to operate the equipment.

This Class B digital apparatus complies with Canadian ICES-003.
Cet appareil numérique de la Classe B est conforme à la norme NMB-003 du Canada.

Cautions and Warnings

WARNING: Use only with the supplied power converters.

Caution: There is a risk of explosion if the battery is replaced by an incorrect type. Dispose of used batteries in accordance with local laws.

Caution: Installation and servicing should be performed only by qualified and experienced technicians to conform to all local codes and to maintain your warranty.

Important Safeguards:

- Read and keep these Instructions.
- Do not drop the equipment or subject it to physical shock.
- This equipment is intended for indoor use. Do not expose this equipment to rain or moisture.
- Do not place other devices on top of this equipment or block the ventilation openings.
- Avoid operating or storing this equipment in extremely humid, dusty, hot/cold environments outside the recommended range of 14 °F to 131 °F (-10 °C to 55 °C).