

Embedded NVR Quick Connection Guide

Document 800-16860 - Rev C - 05/2014



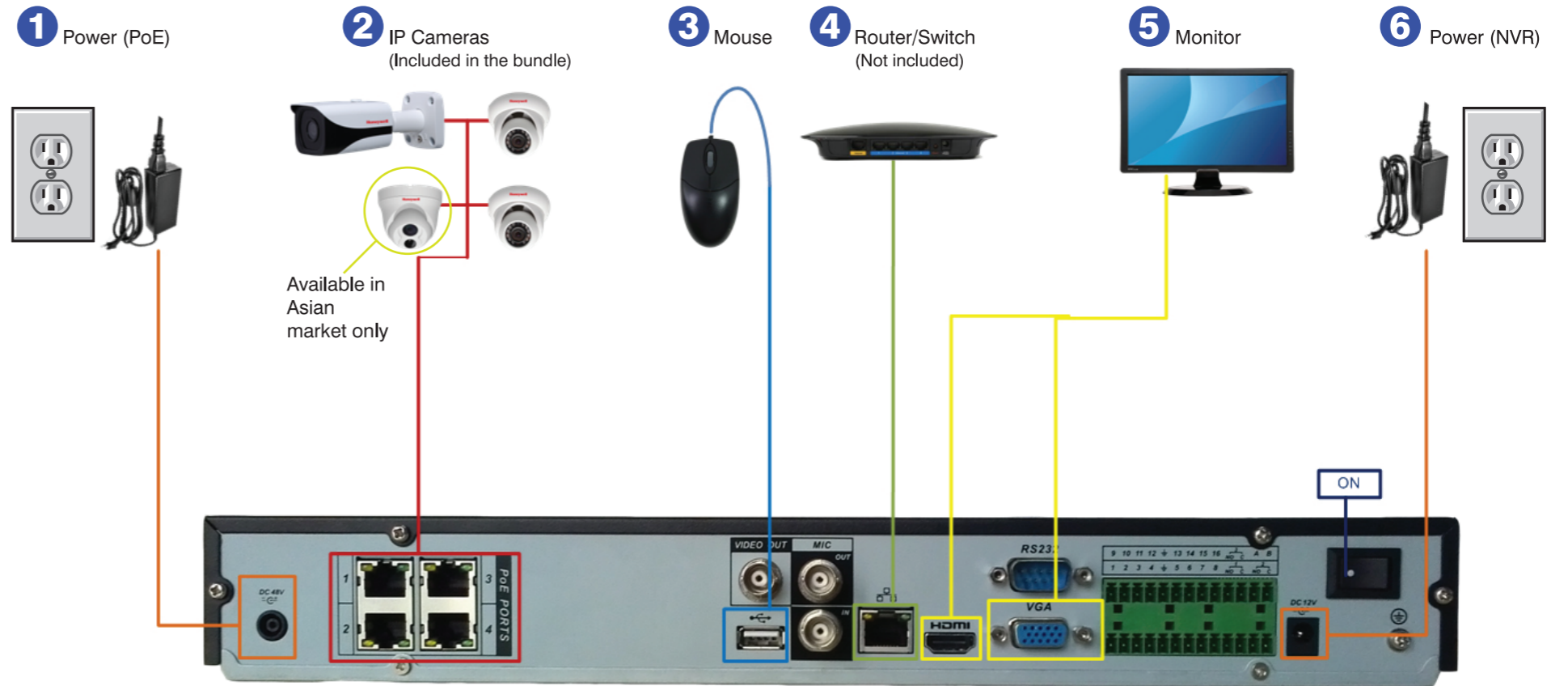
Thank you for purchasing a Honeywell Embedded NVR. Follow the instructions in this guide to install and log in to your NVR. For instructions on configuring any cameras, refer to the [Embedded Network Video Recorder User Guide](#) on the software and documentation CD that came with your NVR. If you require additional assistance, please call the number shown below.

1 Unpack Everything



2 Connect your system

Follow the diagram below to connect your Embedded NVR system.



3 Using the Mouse



- 1 Left mouse button**
 - Click to open the Navigation bar
 - During split-screen display: Double-click an individual channel to view it. Double-click it again to return to split-screen mode.
 - While navigating menus: Click to open a menu option.
- 2 Right mouse button**
 - During Live view: Right click anywhere on the screen to open the Quick menu.
 - Within systems menus: Right click to exit the menus.
- 3 Scroll wheel**
 - Use to change menu options.

Regulatory Statements

Information to the User: This equipment has been tested and found to comply with the limits for a Class B digital device, pursuant to part 15 of the FCC Rules. These limits are designed to provide reasonable protection against harmful interference in a residential installation. This equipment generates, uses, and can radiate radio frequency energy and, if not installed and used in accordance with the instructions, may cause harmful interference to radio communications. However, there is no guarantee that interference will not occur in a particular installation.

If this equipment does cause harmful interference to radio or television reception, which can be determined by turning the equipment off and on, the user is encouraged to try to correct the interference by one or more of the following measures:

- Reorient or relocate the receiving antenna.
- Increase the separation between the equipment and receiver.
- Connect the equipment into an outlet on a circuit different from that to which the receiver is connected.
- Consult the dealer or an experienced radio/TV technician for help.

NOTE Changes or modifications not expressly approved by the party responsible for compliance could void the user's authority to operate the equipment.

This Class B digital apparatus complies with Canadian ICES-003.
Cet appareil numérique de la Classe B est conforme à la norme NMB-003 du Canada.

Cautions and Warnings

WARNING: Use only with the supplied power converters. The Ethernet connection is not intended to be connected to an exposed (outside plant) network.

Caution: There is a risk of explosion if the battery is replaced by an incorrect type. Dispose of used batteries in accordance with local laws.

Caution: Installation and servicing should be performed only by qualified and experienced technicians to conform to all local codes and to maintain your warranty.

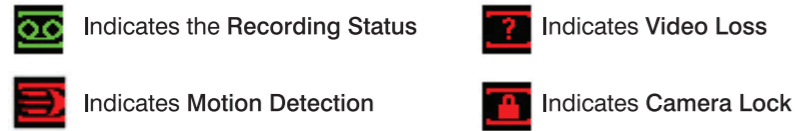
Important Safeguards:

- Read and keep these instructions.
- Do not drop the equipment or subject it to physical shock.
- This equipment is intended for indoor use. Do not expose this equipment to rain or moisture.
- Do not place other devices on top of this equipment or block the ventilation openings.
- Avoid operating or storing this equipment in extremely humid, dusty, hot/cold environments outside the recommended range of 14°F to 131°F (-10°C to 55°C).

4 Log in to the System

When the NVR has booted up, the system opens in the multiple-channel display mode. Please note that the number of windows displayed can vary.

You might see the following icons:




- 1 Right-click the mouse to open the Login window.

- 2 Enter a username and password.

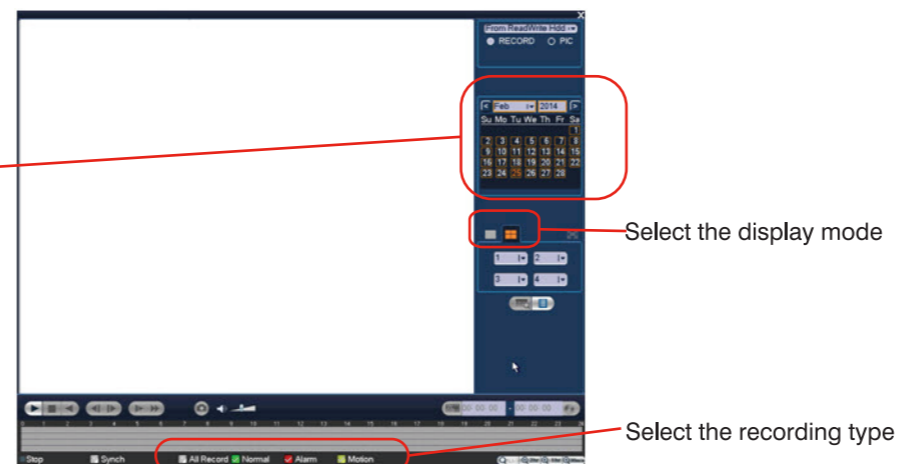
The system default supports three user accounts

- Username: admin. Password: 1234
- Username: 888888. Password: 888888
- Username: 666666. Password: 666666

NOTE: You can use the USB mouse to change the user account and password. Click  to switch the input mode from numbers, to English letters (lowercase/uppercase), and punctuation marks.

7 View Recorded Video

- 1 Right-click in the main viewing mode, and then choose Search. If necessary, log into the system using the admin account (default user name: admin; default password: 1234).
- 2 Use the calendar on the right to search for the exact date for playback.
- 3 Use the drop-down menus to select the channels you want to play.
- 4 Click the playbar at the bottom to select the exact playback time.



5 Configure the General Settings

- 1 Right-click in the main viewing mode, and then choose Main Menu. If necessary, log into the system using the admin account (default user name: admin; default password: 1234).
- 2 Click Setting > General. The General settings window appears.

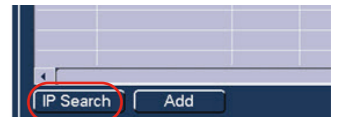
- 3 Enter the date (YYYY MM DD) and the time (HH MM SS) in the System Time. Select a Video Standard (NTSC or PAL). Then click OK to save the settings.

6 Connect to Remote Devices


- 1 Click Remote Device in the main menu to enter the Remote Device window.

- 2 Connect a camera to a router or switch on the same network as the NVR.

- 3 Click IP Search.



- 4 Check the cameras you want to add, then click Add.

- 5 If the Status indicator is green, then the camera is connected, and no further configuration is required. Click OK to save the changes. If the Status indicator is red, then click . Update the following information, as needed.