

HD51H

PERFORMANCE SERIES 960H RESOLUTION INDOOR/OUTDOOR MINI DOME CAMERA

The 960H Performance Series rounds out Honeywell's camera portfolio with a variety of indoor, outdoor, and low-light cameras that are ideal for a diverse range of applications.

Superior Image Quality

- Sharp, detailed ultra-high resolution image (700 TVL)
- Vivid color rendition during daytime
- 2.8–12 mm varifocal manual iris lens

Extremely Low Power Consumption

- Uses less than 1 W of power

Dependable Outdoor Performance

- Weatherproof IP66-rated housing
- Equalization valve prevents vacuum effect caused by sudden changes in barometric pressure
- Vandal resistant

Easy Installation

- Compact, one-piece design for fast, easy installation
- Mounts directly to a ceiling or wall
- 3-axis rotation
- Two-conductor pigtail connector eliminates need to cut wires
- Uses existing BNC cabling; no rewiring required
- Backwards compatible with standard analog DVRs

Market Opportunities

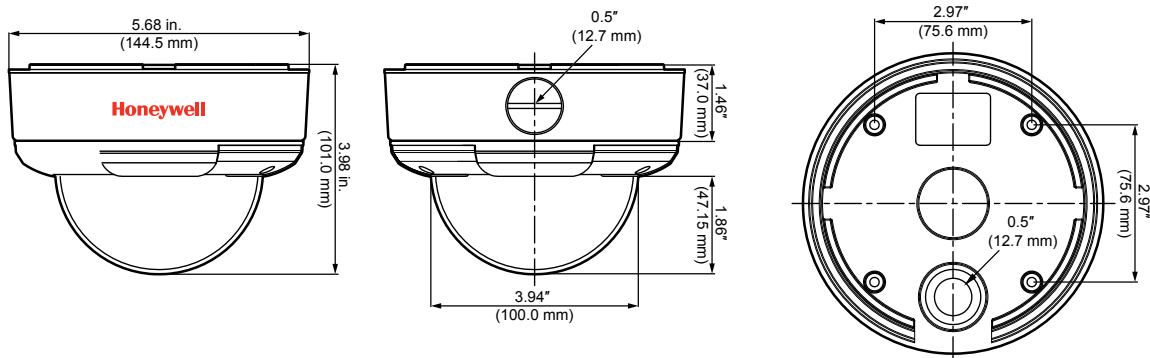
The HD51H is a cost-effective surveillance solution suitable for both indoor and outdoor applications, including schools, colleges, hospitals, commercial sites, industrial parks, airports, gated entrances, foyers, loading docks, and driveways.



SPECIFICATIONS

Operational	
Video Standard	NTSC
Scanning System	2:1 interlaced
Image Sensor	1/3" 960H CMOS
Number of Pixels (HxV)	976 x 496
Minimum Illumination	0.5 lux @ F1.4 (AGC on)
Horizontal Resolution	700 TVL
Video Output	1.0 Vp-p, composite @ 75 ohms
Sync System	Internal
S/N Ratio	50 dB or more (AGC off)
Automatic Electronic Shutter	1/60–1/100,000 s
Lens Type	2.8–12 mm, F1.4, VFMI
Horizontal Angle of View	91° (wide) to 28° (tele)
Gimbal Adjustment	3 axis
AGC	Auto
White Balance	Auto

Electrical	
Input Voltage	12 V DC ±20%
Power Consumption	0.6 W max
Mechanical	
Dimensions	5.68 x 3.98 in. (144.5 x 101.0 mm)
Weight	1.8 lb (0.8 kg)
Construction	Housing: Die-cast aluminum Finish: Light gray powder coating
Connectors	Video Output: BNC connector Power Input: 2.1 mm plug
Environmental	
Temperature	Operating: 14°F to 122°F (–10°C to 50°C) Storage: –4°F to 140°F (–20°C to 60°C)
Relative Humidity	0% to 90%, non-condensing
IP Rating	IP66
Regulatory	
Emissions	FCC, Part 15B, Class A, EN 55022
Immunity	EN 50130-4
Recommended Accessories	
Power Supply	
HPT12DC500	12 V DC / 500 mA Plug-in Regulated 2.1 mm Coaxial Plug UL Listed/CSA Certified



Ordering	
HD51H	Indoor/Outdoor Mini Dome Camera, 1/3" CMOS, 700 TVL, 3.6 mm Fixed Lens, 12 V DC

NOTE: Honeywell reserves the right, without notification, to make changes in product design or specifications.

For more information:

www.honeywell.com/security

Automation and Control Solutions

Honeywell Security Products Americas
2700 Blankenbaker Pkwy, Suite 150
Louisville, KY 40299
1.800.323.4576
www.honeywell.com

Honeywell