

## EQUIP® Series HCD5HIH(X) 1080p True Day/Night Network Box Camera Quick Install Guide

Document 800-09882V1 – Rev A – 11/2011

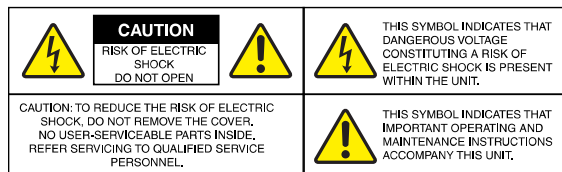
Thank you for purchasing a Honeywell EQUIP Series HCD5HIH(X) 1080p True Day/Night Network Box Camera. Before installing the camera, please verify your model and read this guide carefully. For detailed information for your specific camera, please refer to the appropriate user guide located on the IP Utility DVD or on the Honeywell product web site.

Before installing the camera, Honeywell recommends that you download the latest software updates. Go to [www.honeywellvideo.com/support/download-center/index.html](http://www.honeywellvideo.com/support/download-center/index.html) and follow the instructions to logon, find your camera, and then download the latest software updates.

### Warnings

Installation and servicing should be performed only by qualified and experienced technicians to conform to all local codes and to maintain your warranty.

**WARNING!** 24V AC models require the use of CSA Certified/UL Listed Class 2 power adapters to ensure compliance with electrical safety standards. Power over Ethernet (PoE) should meet the IEEE 802.3 af PoE standard.



**WEEE (Waste Electrical and Electronic Equipment).** Correct disposal of this product (applicable in the European Union and other European countries with separate collection systems). This product should be disposed of, at the end of its useful life, as per applicable local laws, regulations, and procedures.

### FCC Compliance

**Information to the User:** This equipment has been tested and found to comply with the limits for a Class B digital device. Pursuant to Part 15 of the FCC Rules, these limits are designed to provide reasonable protection against harmful interference in a residential installation. This equipment generates, uses, and can radiate radio frequency energy and, if not installed and used in accordance with the instruction manual, may cause harmful interference to radio communications. However, there is no guarantee that interference will not occur in a particular installation.

If this equipment does cause harmful interference to radio or television reception, which can be determined by turning the equipment off and on, the user is encouraged to try to correct the interference. For example, try reorienting or relocating the receiving antenna, increasing the separation between the equipment and receiver, or connecting the equipment to an outlet on a different circuit.

**Caution** Changes or modifications not expressly approved by the party responsible for compliance could void the user's authority to operate the equipment.

This Class B digital apparatus complies with Canadian ICES-003.

### North America

The equipment supplied with this guide conforms to UL 60905-1 and CSA C22.2 No. 60950-1.

### Europe

The manufacturer declares that the equipment supplied with this guide is compliant with the essential protection requirements of the EMC directive 2004/108/EC and the General Product Safety Directive 2001/95/EC, conforming to the requirements of standards EN 55022 for emissions, EN 50130-4 for immunity, and EN 60950 for Electrical Equipment safety.

## Unpack Everything

- One HCD5HIH(X) Camera
- 3-pin terminal block for power input, and 4-pin terminal block for alarm input/output
- This guide
- One DVD containing the software and the User Guide

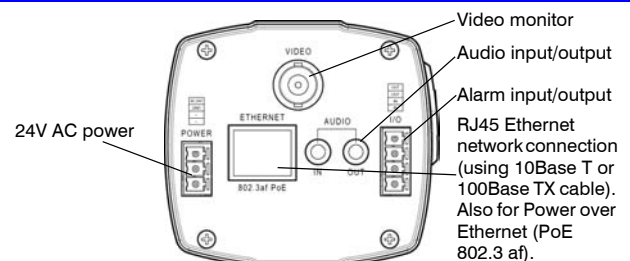
## Prepare for Installation

Select the lens to use with your camera. This EQUIP series IP Network Camera supports the use of a manual iris or DC (Direct Drive) iris lens. When using a DC iris lens, it should be connected to the camera via the 4-pin square socket located at the side of the camera.

## Mount the Camera

This camera is intended for indoor use. Mount the camera using a camera bracket for indoor applications. If you choose to mount the camera outdoors, you must employ a suitable weatherproof enclosure. See [www.honeywellvideo.com](http://www.honeywellvideo.com) for information on Honeywell weatherproof enclosures and brackets.

## Connect the Wiring



**Note** For secure installations, protect surface mounted cables with plastic or metal cable covers.

If your installation involves a 24V AC power source, then please wait approximately 60 seconds after connecting to a power source for video to appear on the local video out.

---

**Note** It is not recommended that you supply both 24V AC and PoE at the same time.

---

---

## Adjust the Field of View

---

1. Connect an analog monitor to the video output connection on the back of the camera.
2. Loosen the Zoom and Focus levers on the lens. Adjust the field of view and focus of the lens to achieve the desired image on the monitor.
3. Re-tighten the Zoom and Focus levers after the adjustment is complete.

---

## Network Setup

---

---

### Installing the Honeywell IP Utility

---



**Note** Before installing and using the Honeywell IP Utility, make sure that your camera is connected to your network through a CAT5 Ethernet cable.

---

**Note** We recommend that you disable any Norton AntiVirus software that might be running on the workstation.

---

To discover the IP camera devices and configure their network settings, you must first install the IP Utility. Go to [www.honeywellvideo.com/support/download-center/index.html](http://www.honeywellvideo.com/support/download-center/index.html) and follow the instructions to logon, find your camera, and then download the latest software updates. You must have a Username and Password, and Windows administrator privileges for the workstation on which the Honeywell IP Utility is being installed.


1. Insert the DVD. Autorun will start the installation. If autorun does not start, browse to the DVD drive and run **Honeywell IP Utility Setup.exe**.
2. Follow the steps in the InstallShield Wizard.
3. Log on to the IP Utility:
  - a. Double-click the IP Utility icon (  ) on the desktop. The logon dialog box appears.
  - b. From the **Username** list, select **Administrator** or **Guest**.
  - c. Enter the case-sensitive **Password** and click . The default passwords are **1234** (Administrator) or **guest** (Guest user).

**Note** This HCD5HIH(X) camera supports the PSIA specification for interoperability between network video products. There is no support for legacy EQUIP and EQUIP2 products.

---

---

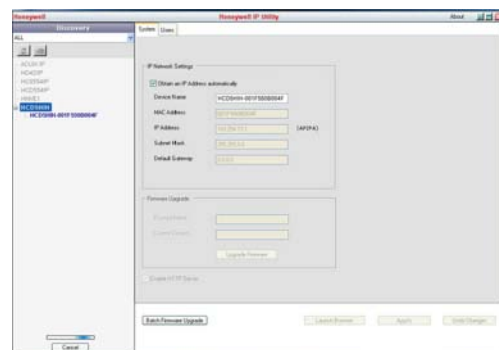
## Configuring the Network

1. After you log on to the IP utility, the devices on the network are automatically discovered and listed in the **Discovery** pane. After the initial discovery, auto-refresh continues to discover newly added network devices.
2. Connect to your IP camera device by double-clicking it in the **Discovery** pane or by selecting it and clicking .
3. Configure the IP network settings:
  - **Automatically.** Connect to the device, click the **System** tab, select to **Obtain an IP Address automatically**, enter the Device Name, and click **Apply**. The network settings are automatically assigned from the network server.
  - **Manually.** Connect to the device, click the **System** tab. Ensure **Obtain an IP Address automatically** is not selected, then enter the Device Name, IP Address, Subnet Mask, and Gateway. Click **Apply**.

---

**Caution** Check the IP network settings before clicking **Apply**. Incorrect values might cause a failure when connecting to the device.

---



---

**Note** Contact your network administrator if you have any network related issues or questions about your network.


---

---

## Camera Operation

---

The camera has a web client that enables you to view video and configure device settings for the camera using a standard web browser. See the Reference Guide to set up your web browser to view video. To log on to the web client application:

1. Launch Internet Explorer and enter the URL (IP address) for the network camera.  
OR, launch the web client application from the IP Utility by clicking **Launch Browser**.
2. Select the User Name as **admin** or **Guest**.
3. Enter the case-sensitive password and click . The default passwords are **1234** (Administrator) or **guest** (Guest user).

**Honeywell**

[www.honeywellvideo.com](http://www.honeywellvideo.com)  
+1.800.796.CCTV (North America only)  
HVSsupport@honeywell.com

Document 800-09882V1 – Rev A – 11/2011