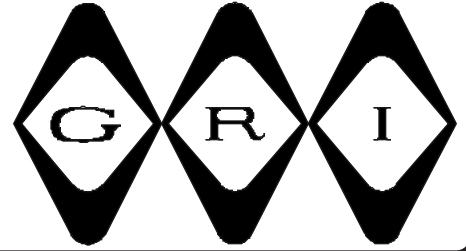


# TAMPER SWITCH



## TS-20 SERIES

- ◆ Recessed Adjustable Plunger (From 1/4" to 1/2")
- ◆ 3/8" Diameter (Smallest In The Industry)
- ◆ Easy To Install - Replaces Old Mechanical Tampers
- ◆ Strong Spring Action ◆ Press To Fit ◆ 12" #22AWG Leads
- ◆ Screw Down Flange on TS-20 For Positive Retention
- ◆ Longer Leads, Zip Cord or Jacketed Cable Upon Request
- ◆ Hermetically Sealed ◆ Plated Contacts Resist Sticking or Freezing
- ◆ Mounting Hardware Included ◆ Supervisory Loops Upon Request
- ◆ Lifetime Warranty



**TS-20**  
**3/8" Drill Mount**



**TSC-20**  
**Clip Mounting**

PART NUMBERS:		Closed Loop	Open Loop	SPDT
Reed Plunger		TS-20	TS-30	TS-40
Screw Down Flange				
Reed Plunger		TSC-20	TSC-30	TSC-40
Clip Mounted				
Travel:	Total	.250		
	Pre Travel	.105 ± .035		

GEORGERISK INDUSTRIES, INC.  
GRI. PLAZA  
KIMBALL, NE 69145



MADE IN U.S.A.

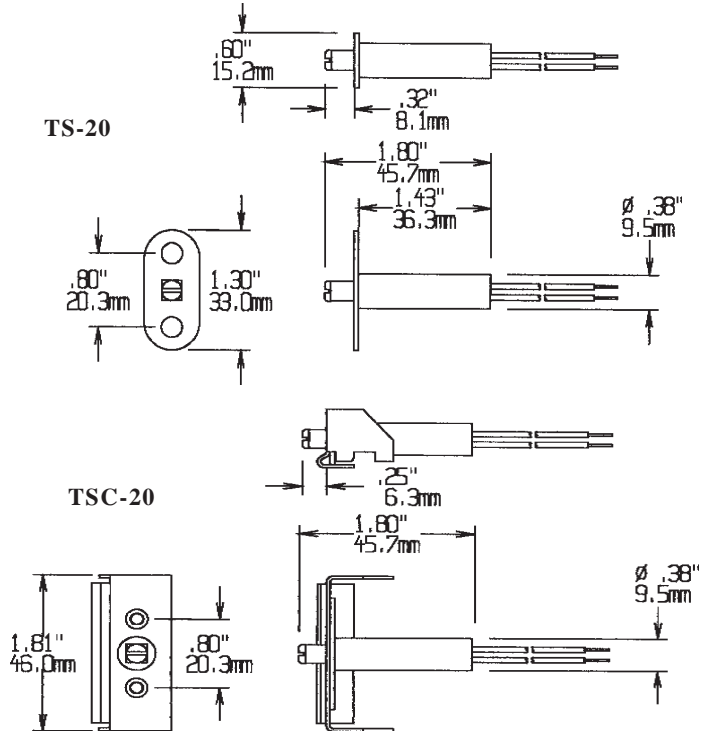
TOLL-FREE 1-800-445-5218  
TOLL-FREE 1-800-523-1227  
(308) 235-4645  
FAX (308) 235-3561  
E-MAIL: [grisales@megavision.com](mailto:grisales@megavision.com)  
WEB SITE: [www.grisk.com](http://www.grisk.com)



# TAMPER SWITCH

## INSTALLATION APPLICATIONS:

The adjustable plunger actuated TS series was developed to provide a tamper switch with a smaller diameter for applications where a normal plunger or roller ball type switch is too large. The 3/8" diameter is ideal for a variety of door and window applications. The oval flange allows the switch to be solidly anchored where needed. The design also resists locking problems caused by expansion or contraction. Available with a bracket for box tamper. Made of nylon for flexibility, the stainless steel spring and sealed contact insure a long service life.



## GRI products meet or exceed these minimum general specifications:

PART NUMBER	LOOP TYPE	ELECTRICAL CONFIG.	REED FORM	MAXIMUM INITIAL CONTACT RESISTANCE (Ω)	MAXIMUM CONTACT RATING (W)	MAXIMUM SWITCHING VOLTAGE (VDC)	MAXIMUM SWITCHING CURRENT (A)
TS-20	Closed	N/O	A	.115	10	200	.500
TSC-20	Closed	N/O	A	.115	10	200	.500
TS-30	Open	N/C	B	.140	5	175VDC	.250
TSC-30	Open	N/C	B	.140	5	175VDC	.250
TS-40	Open/Closed	SPDT	C	.140	5	175VDC	.250
TSC-40	Open/Closed	SPDT	C	.140	5	175VDC	.250

## WARRANTY:

Lifetime warranty against workmanship, material and factory defects.

## CONTACT YOUR G.R.I. DISTRIBUTOR OR CALL:

GEORGERISK INDUSTRIES, INC.  
GRI PLAZA  
KIMBALL, NE 69145



MADE IN U.S.A.

TOLL-FREE 1-800-445-5218  
TOLL-FREE 1-800-523-1227  
(308) 235-4645

FAX (308) 235-3561

E-MAIL: [grisales@megavision.com](mailto:grisales@megavision.com)

WEB SITE: [www.grisk.com](http://www.grisk.com)