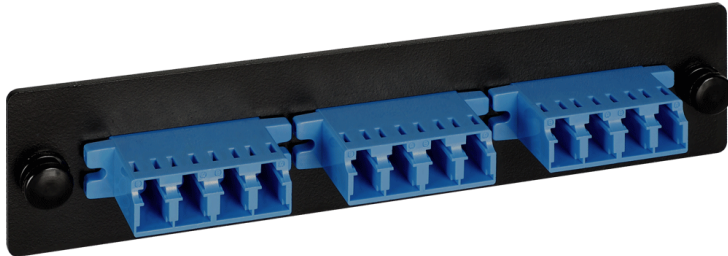


# Adapter Panel, 3-Quad LC, 12F, Blue, SM

---

## Package Includes:

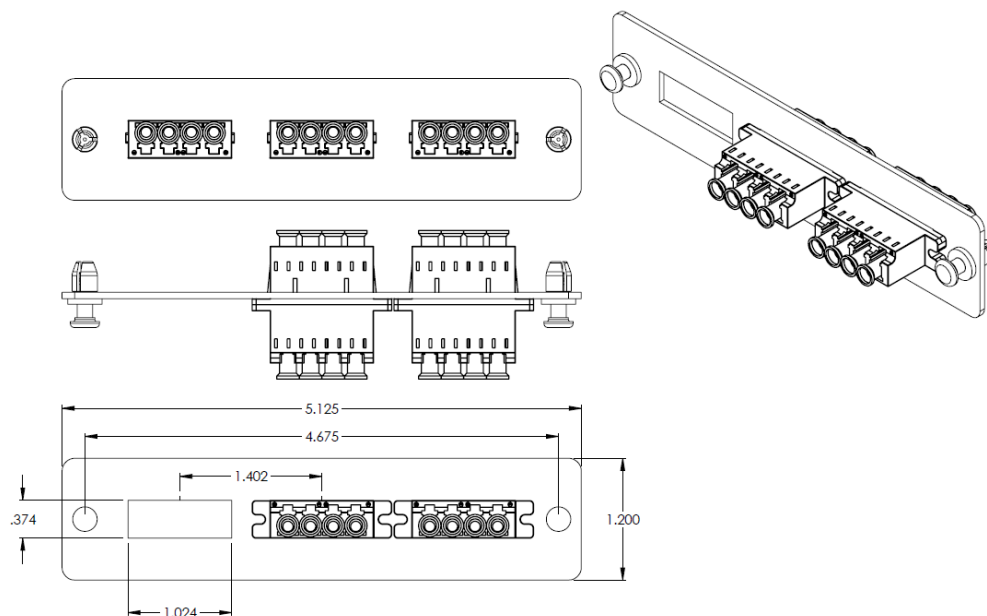
- A. 3-Quad LC Adapter Panel, 1 pc.



## Features and Benefits

- Push pins provide a secure, snug fit and tool-less installation
- Designed to fit ICFORPP1RM and ICFORPP2RM blank fiber optic patch panels, ICFOR fiber optic rack mount enclosures, and ICFOD fiber optic wall mount enclosures
- Compatible with LC singlemode fiber (SMF) assemblies.

# Specifications



## NOTE: UNLESS OTHERWISE SPECIFIED

### 1. MATERIAL:

- A. ADAPTER PANEL: 16GA CRS, TEXTURED BLACK POWDER COAT
- B. ADAPTER: PLASTIC BODY – COLOR: BLUE
- C. DUST CAP: PLASTIC
- D. SLEEVE: CERAMIC (SM)

For warranty information, go online to [icc.com/warranty](http://icc.com/warranty).

Part No: ICFOPL16BK Rev: A

Part No.: ICFOPL16BK

Rev: A

Page 2 of 2

| 888-ASK-4ICC | [icc.com](http://icc.com) | [csr@icc.com](mailto:csr@icc.com) |

