

EXMB.020 L-bracket

www.boschsecurity.com



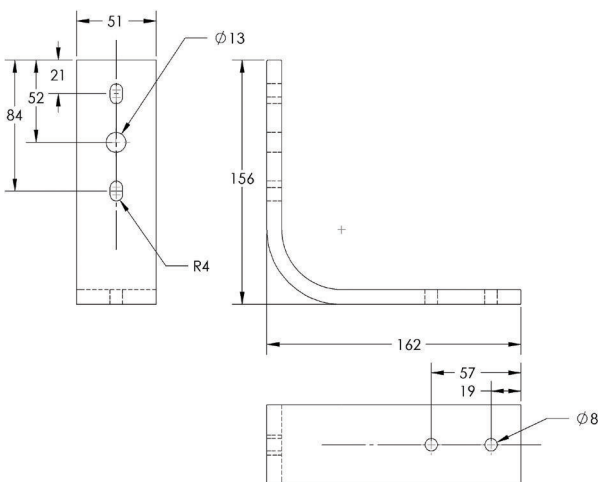
BOSCH
Invented for life



- ▶ Simple, effective L-bracket
- ▶ Made of thick flat-bar aluminum
- ▶ Versatile design reduces installation time

This heavy duty wall bracket is designed to fit small enclosures for tight locations. The pan-adjusted bolt on the underside can also be used to hang infrared illuminators such as the UF100 and UF500 models.

Installation/configuration notes



Parts included

- Wall mount anchors not included.

Technical specifications

Material	3/8 in thick aluminum
Coating	Black (Standard) White (Optional)
Weight	0.55 kg (1.2 lbs)
Maximum Load	11.4 kg (25 lbs)

Ordering information

EXMB.020B L-bracket

L-Bracket Only, Heavy Duty, black
Order number **EXMB.020B**

EXMB.020W L-Bracket

L-Bracket Only, Heavy Duty, white
Order number **EXMB.020W**