

ETP-PMD – Dual Faceplate Pedestal Mount

Description

Free standing Pedestal Mount allows an Emergency/Information or Access phone to be mounted practically anywhere. An additional faceplate allows a card reader, camera, directory or other device to be mounted above the phone.

Features

- Constructed of vandal resistant 1/4" steel with slanted top
- Radius Pedestal, with 2" radius corners, offers contemporary architectural styling
- Easily mount any 400-series Talk-A-Phone Emergency/Information phone
- Faceplates are lit at all times by ultra bright LEDs
- Secondary plate available in stainless or aluminum for mounting directories, cameras, card readers, etc.
- Available in a variety of colors with optional wording on the sides

Specifications

Dimensions: 12.0(305) W x 8.0(203) D x 60.1(1527) H in(mm)

Weight: 180 lbs. (81.6 kg)

Construction: 0.25" (6.3mm) steel with multi-coat rust inhibitive coating

Lettering: 3.25" (82.5mm) high reflective letters, available in many colors and wordings

Lighting: Ultra bright LEDs, 50,000 hour lifetime

Power: Faceplate light operates on 12-24VDC or 24-120VAC

Mounting: Mounts into concrete foundation using included hardware (shipped in advance)

Compliance: CSA Certified to UL Standard 60950



ETP-PMD shown with ETP-400K and 25141 blank stainless faceplate

Communication Options

Emergency Phone: Model **ETP-400** has a red **EMERGENCY** button

Access Phone: Model **ETP-400C** has a red **TO CALL** button

Emergency/Info Phone: Model **ETP-400D** has a red **EMERGENCY** button and a black **INFO** button to allow two different types of locations to be called

Emergency/Keypad Phone: Model **ETP-400K** has a red **EMERGENCY** button as well as a black **CALL**

Cellular Interface: Model **ETP-CI** when used in conjunction with a phone listed above creates a stand-alone cellular Emergency Phone

Options & Accessories

Single Faceplate: Model **ETP-PM** is 4 feet tall and has room for one hands-free phone or other device.

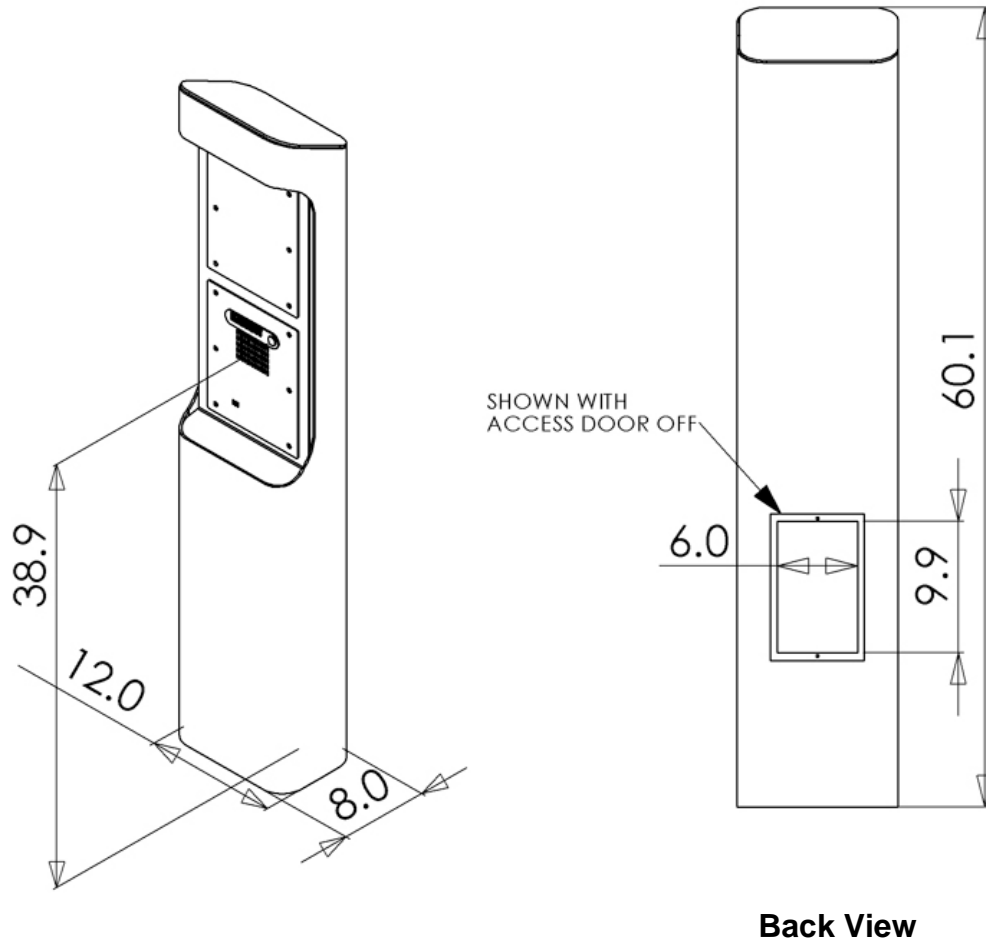
Stainless Option: Model **ETP-PMD-SS** is made of 3/16" brushed stainless steel

Blank Stainless Plate: Model **25141** is a blank stainless faceplate for mounting additional devices

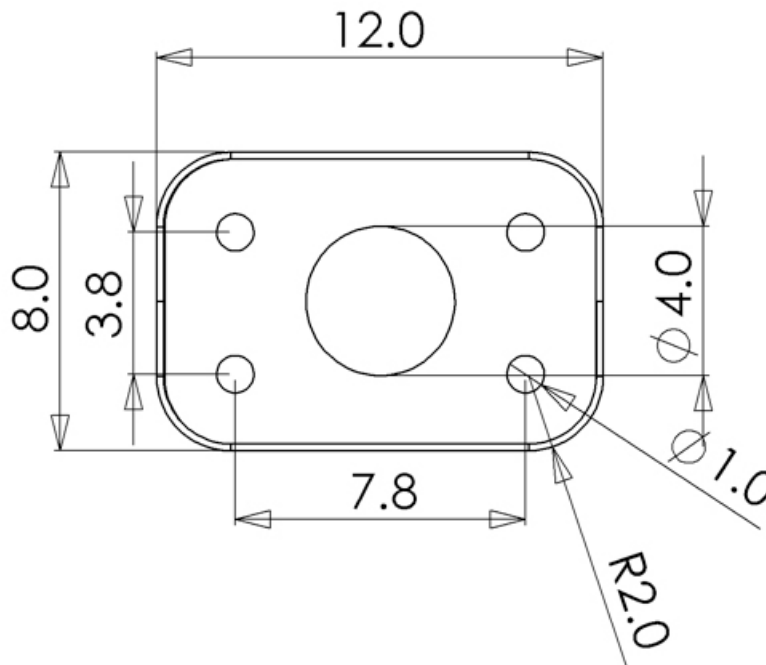
Blank Aluminum Plate: Model **25155** is a blank aluminum faceplate for mounting additional devices

ETP-PM-D – Dual Faceplate Pedestal Mount

Dimensions



Footprint Dimensions



All dimensions are in inches

Copyright 2009 Talk-A-Phone Co. All rights reserved.

Talk-A-Phone Co. • 7530 North Natchez Avenue • Niles, Illinois 60714-3804
Phone 773.539.1100 • Fax 773.539.1241 • info@talkaphone.com • www.talkaphone.com
All prices and specifications are subject to change without notice.
Talk-A-Phone, Talk-A-Lert, Scream Alert and WEBS are registered trademarks of Talk-A-Phone Co.