

ETP-PMD-SS – Dual Faceplate Stainless Pedestal Mount

Description

Free standing Pedestal Mount allows an Emergency/Information or Access phone to be mounted practically anywhere. An additional faceplate allows a card reader, camera, directory or other device to be mounted above the phone.

Features

- Constructed of vandal resistant 3/16" stainless steel with slanted top
- 2" radius corners offer contemporary architectural styling
- Easily mount any 400-series flush-mounting Emergency/Information phone
- Faceplates are lit at all times by compact concealed light
- Secondary plate available in stainless or aluminum for mounting directories, cameras, etc.
- Available with optional wording on sides

Specifications

Dimensions: 12.0(305) W x 8.0(203) D x 60.1(1527) H in(mm)
 Weight: 130 lbs. (59.0 kg)
 Construction: 7 gauge (3/16") stainless steel
 Lettering: 3.25" (82.5mm) high reflective letters, available in many colors and wordings
 Lighting: 120VAC: 7 watt high efficiency faceplate light, 10,000 hour life bulb
 24VDC: Ultrabright, low-power LEDs with 100,000 hour life
 Power: 120VAC or 24VDC for faceplate light. Emergency phone (sold separately) is powered by phone line
 Mounting: Mounts into concrete foundation using included hardware (shipped in advance)
 Compliance: CSA Certified to UL Standard 60950



*Shown with
ETP-400K and
blank faceplate*

Communication Options

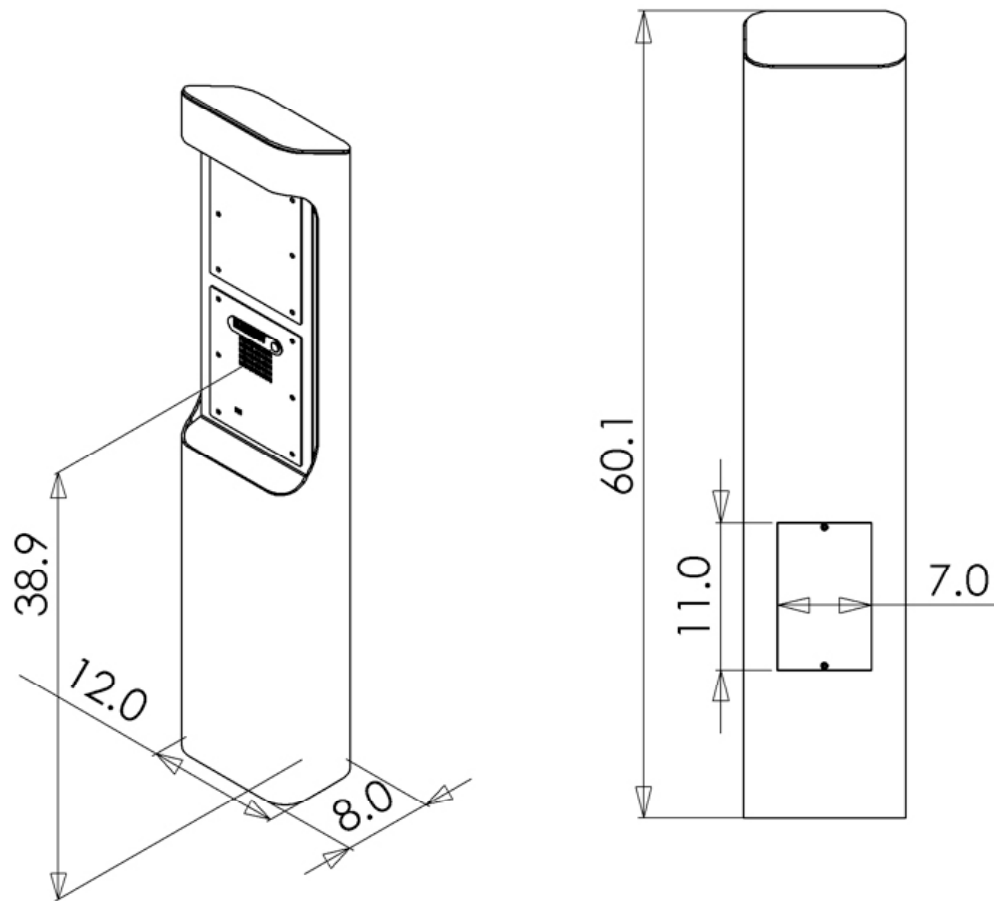
Emergency Phone: Model **ETP-400** has a red **EMERGENCY** button
 Access Phone: Model **ETP-400C** has a red **TO CALL** button
 Emergency/Info Phone: Model **ETP-400D** has a red **EMERGENCY** button and a black **INFO** button to allow two different types of locations to be called
 Emergency/Keypad Phone: Model **ETP-400K** has a red **EMERGENCY** button as well as a black **CALL** button which allows access to the built-in keypad
 RF Interface: Models **VOIP-RF** and **VOIP-1** (or models **VOIP-RF-900** and **VOIP-1**) when used in conjunction with a 400-Series phone creates a Radio Frequency Emergency Phone. (Note: other RF equipment is required for a complete system)
 Cellular Interface: Model **ETP-CI** when used in conjunction with a phone listed above creates a stand-alone cellular Emergency Phone

Options & Accessories

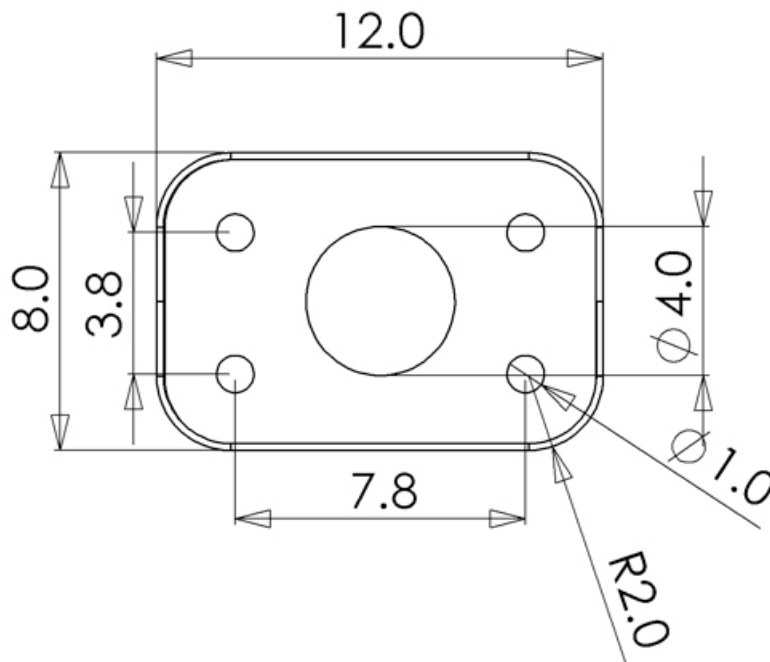
Painted Steel: Model **ETP-PMD** is made of 1/4" steel, painted your choice of color

ETP-PMD-SS – Dual Faceplate Stainless Pedestal Mount

Dimensions



Footprint Dimensions



All dimensions are in inches

Copyright 2009 Talk-A-Phone Co. All rights reserved.

Talk-A-Phone Co. • 7530 North Natchez Avenue • Niles, Illinois 60714-3804
Phone 773.539.1100 • Fax 773.539.1241 • info@talkaphone.com • www.talkaphone.com
All prices and specifications are subject to change without notice.
Talk-A-Phone, Talk-A-Lert, Scream Alert and WEBS are registered trademarks of Talk-A-Phone Co.