



# DTK-MRJ45 Series

## RJ45 Series Surge Protection General Product Specifications

DITEK's MRJ45 series protects vital data lines and computerized systems from surge-induced damage. Convenient RJ connections protect four voice/data/signal pairs.

MRJ45 series protectors are easily installed at a building's incoming entry, at the equipment being protected, or any point between them. The MRJ series is perfect to protect incoming CO lines, station lines, low voltage data, and building-to-building runs.



DTK-MRJ14SCPRUV

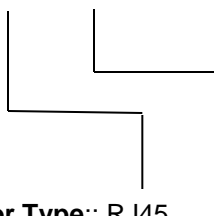
### DTK-MRJ45

#### Product Features

- Protects 4 pairs, RJ45 connections
- Multi-stage, hybrid design provides the best possible protection
- Current-limiting circuitry minimizes risk to connected equipment
- Suitable for use on 5V – 130V circuits

#### Selection Guide

DTK- MRJ##SCP###



**Connector Type:** RJ45

**Voltage Level:** D, X, LV, OPX, RUV  
(see table to right for voltage ranges)

**Example:** DTK-MRJ45SCPD

#### Specifications

**Agency Approvals:** UL497A

**Connection Method:** RJ45

**Max Continuous Current:** 0.15 Amps

**Max Surge Current:** 2,000 Amps per pair (6V-50V)  
9,000 Amps per pair (130V)

**Protection Modes:** Tip-Ground, Ring-Ground (All)

**Operating Temperature:** -40°F - 158°F (-40°C - 70°C)

**Maximum Humidity:** 95% non-condensing

**Dimensions:** 1.7" x 3.0" x 1.2"  
(43mm x 76mm x 30mm)

**Weight:** 4oz (113g)

**Housing:** ABS

**Warranty:** Ten Year Limited Warranty

Model DTK- MRJSCP###	Service Voltage	MCOV	Clamp Voltage
D	0-6 V	8VDC	12V
X	14 V	18VDC	22V
LV	30 V	38VDC	47V
OPX	50 V	66VDC	82V
RUV	130 V	175VDC	204V

