

FM 999 Door Release

RIXSON

ASSA ABLOY

www.rixson.com

TEMPLATE NUMBER

DR100280A

DATE

07-13

1. Use table to locate Switch Box.

Switch Box Centerline ("C") = 32-3/8" (822mm)

2. Determine door width (Dim "B"). Measure pivot centerline to wall (Dim. "A").
Find dimension "C" in table.

Example: Pivot centerline to wall ("A") = 10" (254mm)
Door Width ("B") = 36" (914mm)
Switch Box Centerline ("C") = 31-3/4" (806mm)

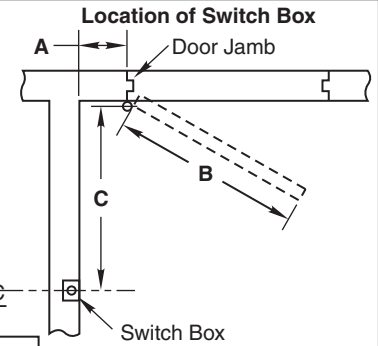
4. If dimensions "A" and "B" intersect in shaded area of table DO NOT INSTALL SWITCH BOX. The degree of door opening will not permit proper alignment between armature and wall magnet.

5. Height to be determined by others. Suggested height is 2' to 4' (610mm to 1219mm) from floor and/or not over 6' (1829mm).

3. If "A" or "B" falls between the numbers listed in table, allow for difference.

Example: Pivot centerline to wall ("A") = 7" (178mm)
Door Width ("B") = 36" (914mm)

6. Check degree of door opening in table and coordinate with door closers and other door hardware.



"A" – Pivot Centerline to Wall
"B" – Door Width
"C" – Pivot Centerline to Switch Box Centerline

Dim. "A"	Door Width "B"																							
	28" (711)		30" (762)		32" (813)		34" (864)		36" (914)		38" (965)		40" (1016)		42" (1067)		44" (1118)		46" (1168)		48" (1219)			
	"C"	Deg.	"C"	Deg.	"C"	Deg.	"C"	Deg.	"C"	Deg.	"C"	Deg.	"C"	Deg.	"C"	Deg.	"C"	Deg.	"C"	Deg.	"C"	Deg.		
2" (51)	24-3/4 (629)	86°	26-3/4 (679)	87°	28-3/4 (730)	87°	30-3/4 (781)	87°	32-3/4 (832)	88°	34-3/4 (883)	88°	36-3/4 (933)	88°	38-3/4 (984)	88°	40-3/4 (1035)	88°	42-3/4 (1086)	88°	44-3/4 (1137)	88°		
4" (102)	24-3/4 (629)	91°	26-3/4 (679)	91°	28-3/4 (730)	91°	30-3/4 (781)	91°	32-3/4 (832)	91°	34-3/4 (883)	91°	36-3/4 (933)	91°	38-3/4 (984)	91°	40-3/4 (1035)	91°	42-3/4 (1086)	91°	44-3/4 (1137)	91°		
6" (152)	24-1/2 (622)	95°	26-1/2 (673)	95°	28-1/2 (724)	95°	30-1/2 (775)	95°	32-1/2 (826)	94°	34-1/2 (876)	94°	36-1/2 (927)	93°	38-1/2 (978)	93°	40-1/2 (1029)	93°	42-1/2 (1080)	93°	44-1/2 (1130)	93°		
8" (203)	24" (610)	100°	26-1/4 (667)	99°	28-1/4 (718)	99°	30-1/4 (768)	98°	32-1/4 (819)	98°	34-1/4 (870)	98°	36-1/4 (921)	97°	38-1/4 (972)	96°	40-1/4 (1022)	96°	42-1/4 (1073)	96°	44-1/2 (1130)	96°		
10" (254)	23-1/2 (597)	105°	25-3/4 (654)	104°	27-3/4 (705)	103°	29-3/4 (756)	102°	31-3/4 (806)	101°	34" (864)	101°	36" (914)	100°	38" (965)	100°	40" (1016)	99°	42" (1067)	99°	44-1/4 (1124)	99°		
12" (305)	22-3/4 (578)	110°	25" (635)	108°	27" (686)	107°	29-1/4 (743)	106°	31-1/4 (794)	105°	33-1/2 (851)	104°	35-1/2 (902)	103°	37-1/2 (953)	103°	39-1/2 (1003)	102°	41-3/4 (1060)	101°	43-3/4 (1111)	101°		
14" (356)	22" (559)	115°	24" (610)	113°	26-1/4 (667)	112°	28-1/2 (724)	110°	30-1/2 (775)	109°	32-3/4 (832)	108°	34-3/4 (883)	106°	37" (940)	106°	39" (991)	105°	41" (1041)	104°	43-1/4 (1099)	103°		
16" (406)	20-3/4 (527)	121°	23" (584)	118°	25-1/4 (641)	115°	27-1/2 (699)	114°	29-3/4 (756)	113°	32" (813)	111°	34" (864)	110°	36-1/4 (921)	108°	38-1/2 (978)	108°	40-1/2 (1029)	106°	42-3/4 (1086)	106°		
18" (457)	19-1/4 (489)	127°	21-3/4 (552)	124°	24-1/4 (616)	121°	26-1/2 (673)	118°	28-3/4 (730)	117°	31" (787)	115°	33-1/4 (845)	113°	35-1/2 (902)	112°	37-3/4 (959)	111°	39-3/4 (1010)	109°	42" (1068)	109°		
20" (508)	17-1/4 (438)	133°	20" (508)	130°	22-3/4 (578)	126°	25-1/4 (641)	123°	27-1/2 (699)	121°	30" (762)	119°	32-1/4 (819)	117°	34-1/2 (876)	115°	36-3/4 (933)	114°	39" (991)	112°	41-1/4 (1048)	112°		
22" (559)			18" (457)	135°	21" (533)	132°	23-3/4 (603)	128°	26-1/4 (667)	125°	28-3/4 (730)	123°	31" (787)	121°	33-1/2 (851)	119°	35-3/4 (908)	118°	38" (965)	115°	40-1/4 (1022)	115°		
24" (610)							21-3/4 (552)	134°	24-1/2 (622)	130°	27-1/4 (692)	127°	29-3/4 (756)	125°	32-1/4 (819)	123°	34-1/2 (876)	121°	36-3/4 (933)	118°	39-1/4 (997)	118°		
26" (660)							19-1/2 (495)	139°	22-3/4 (578)	135°	25-1/2 (648)	132°	28" (711)	129°	30-3/4 (781)	126°	33-1/4 (845)	124°	35-1/2 (902)	122°	38" (965)	121°		
28" (711)													23-1/2 (597)	137°	26-1/4 (667)	133°	29" (737)	130°	31-3/4 (806)	128°	34-1/4 (870)	125°	36-3/4 (933)	124°
30" (762)													24" (610)	137°	27" (686)	135°	30" (762)	132°	32-1/2 (826)	129°	35-1/4 (895)	127°		
32" (813)															25" (635)	139°	28" (711)	136°	30-3/4 (781)	132°	33-1/2 (851)	131°		

Dimensions given in inches (mm).

FM999 Door Release Location Sheet

RIXSON
ASSA ABLOY
www.rixson.com

TEMPLATE NUMBER **DR100280B** DATE **07-13**