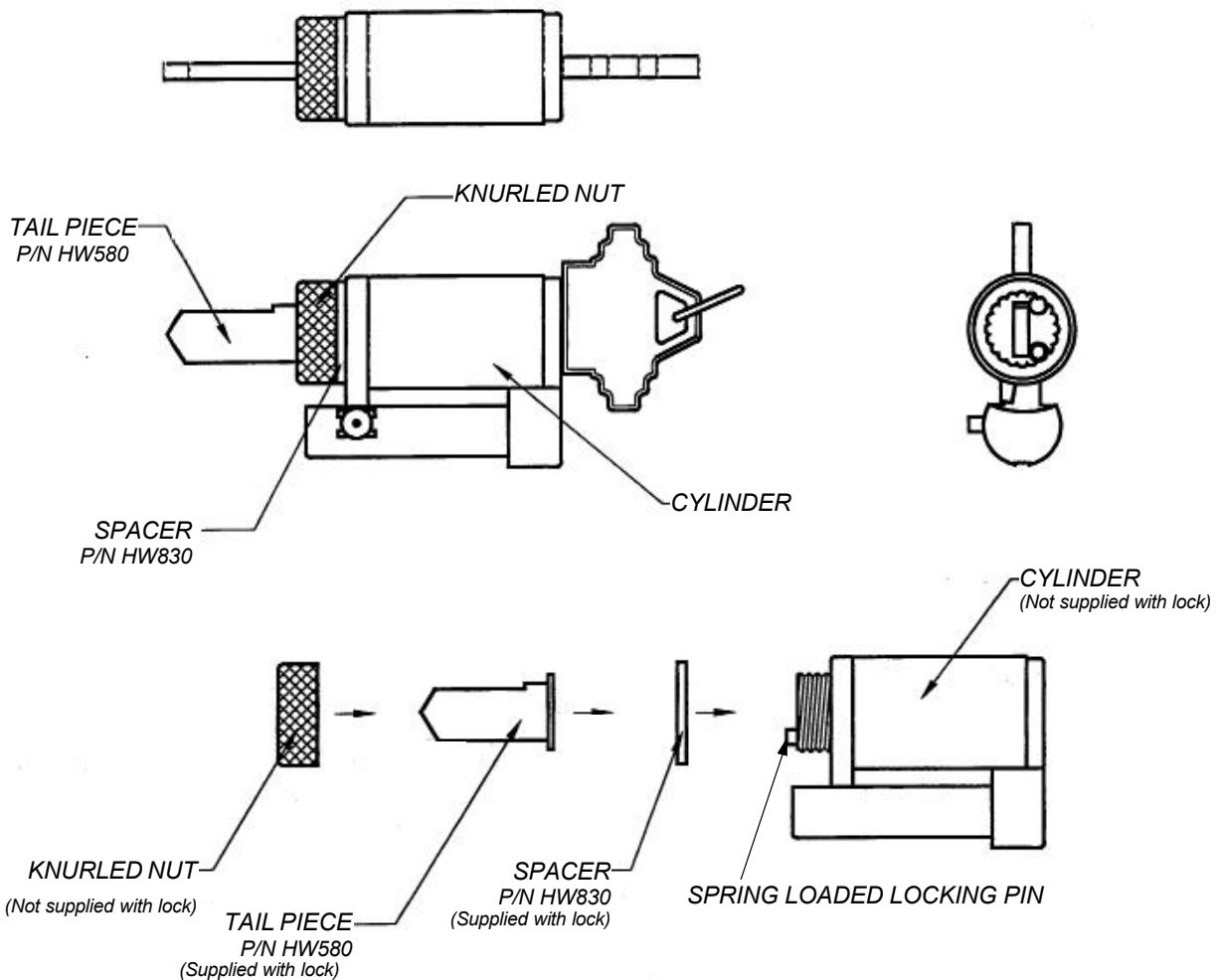


## **SCHLAGE CYLINDER ASSEMBLY ADDENDUM**

FOR REGAL CURVED LEVER (75) TRILOGY MODELS ONLY



### **ASSEMBLY PROCEDURE:**

1. REMOVE ORIGINAL TAIL PIECE: DEPRESS THE SPRING LOADED LOCKING PIN AND UNSCREW THE KNURLED NUT.
2. PLACE SPACER (PROVIDED) ON CYLINDER, AS SHOWN.
3. PLACE TAIL PIECE IN VERTICAL POSITION (AS SHOWN).
4. ASSEMBLE THE KNURLED NUT: DEPRESS THE SPRING LOADED LOCKING PIN, THEN SCREW BACK ON THE KNURLED NUT.
5. CHECK FOR PROPER CLEREANCE FOR ROTATION OF THE CYLINDER AND MAKE SURE THAT THE SPRING LOADED PIN IS LOCKED WITH THE NUT.