

DiBos 19 inch Digital Video Recorders - Version 8 (AMEC)

www.boschsecurity.com



BOSCH
Invented for life

DiBos uses Bosch's proven state of the art digital recording and communications technology and takes video surveillance to a new level. It is an integral part of overall security solutions for a wide range of applications – including banks, large retailers, railway stations, airports, city centers, industrial facilities, and office buildings.

Customers can retrieve vital images and share information faster than ever before. They can better assess critical situations and take action immediately. Whether they're on site or at a remote network location, authorized personnel have quick, convenient access to information so they can operate more effectively and efficiently.

DiBos supports live viewing and recording at resolutions up to 4CIF. Users can store images at up to 450/375 ips (NTSC/PAL) on 30 composite video inputs. As many as 10 audio data streams can also be recorded on 30 video channels units.

Users can connect up to 32 additional IP video sources. This includes support for Bosch IP cameras (Dinion IP and AutoDome IP), Bosch MPEG4 network video encoders (VideoJet and VIP X Series), as well as JPEG images from numerous network camera manufacturers. DiBos can store up to 30/25 ips per attached network video device.

The system offers advanced features for viewing and very high flexibility in recording and image access. The real power of DiBos is fast, convenient accessibility to images and information. If required, accessibility to images and information is possible round the clock and everywhere all over the world. Communication and access to DiBos is possible via private or public networks. For these purposes the system can be connected to a variety of peripheral devices and systems.

The unique, scalable GUI allows live and recorded images from multiple remote systems to be viewed from a single PC or another DiBos. With this powerful tool, security managers can monitor and supervise various locations simultaneously.

Cameras and viewing modes can be programmed or selected manually. Each camera offers in-window pan/tilt/zoom functionality from local or remote facilities. Images are displayed with date/time, location, camera name and status of connected devices such as detectors and sensors.

DiBos can be programmed to respond to specific situations and events automatically. Minimal human intervention is necessary.

In response to alarms, the system can be programmed to transmit images or messages to security personnel or security control center.

Playback is easy thanks to familiar search and navigation functions in a tree structure. Images can be accessed locally or remotely via a company network or the Internet. The customer can select multiple different views from up to 30 cameras.

Fast, powerful image search functions eliminate time-consuming manual searches. Functions include search for image changes, search for criteria such as camera number and recording date/time.

To ensure high security, all access is controlled by user authorization. Profiles are assigned by the system administrator. Events, such as login, logoff, status changes, image transmission, and system shutdown are stored in a database. Video authentication is built in to ensure that DiBos images are not altered in any way.

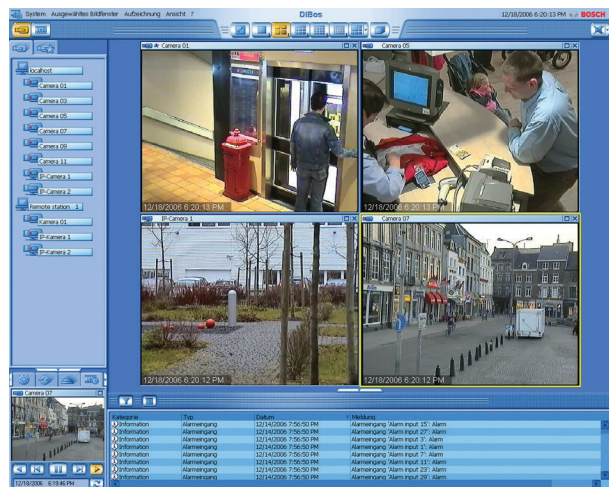
Various storage devices – such as external disk arrays, RAID and NAS devices, and external disk drives – may be used for export and backup of images.

DiBos supports Bilinx for pan/tilt/zoom and camera configuration via the video coax cable.

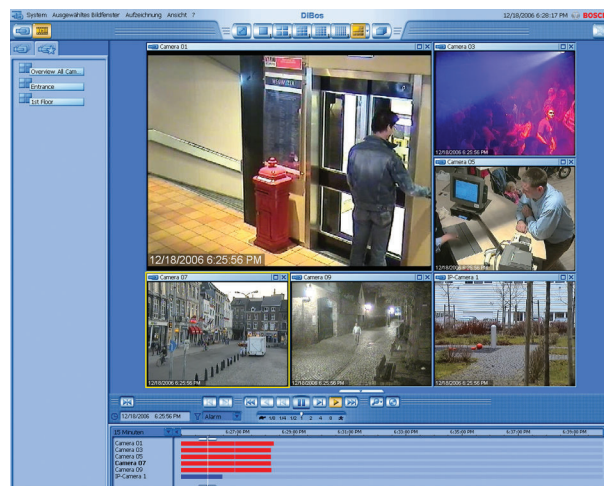
The configuration wizard makes installation quick and easy.

DiBos serial ports can be connected to Bosch alarm panels and Allegiant matrices.

Live mode



Playback mode

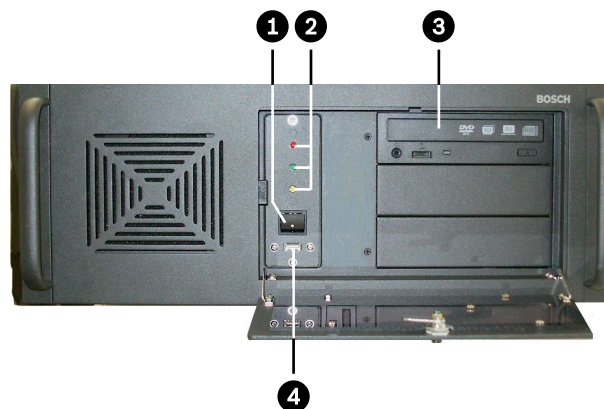


Certifications and approvals

Region	Certification	
USA	FCC	-List

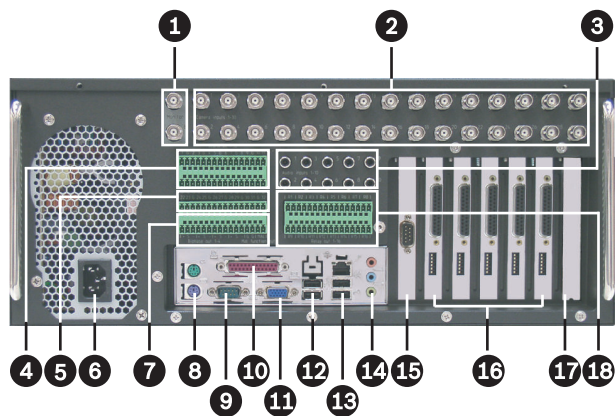
Installation/configuration notes

Front view:



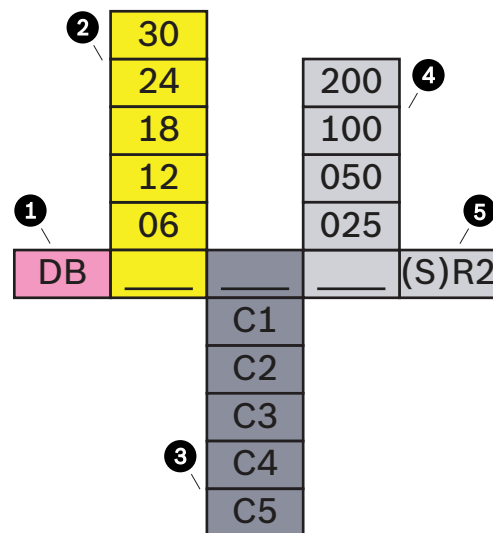
- | | | | |
|---|---|---|------------|
| 1 | On/Off switch | 3 | DVD writer |
| 2 | Control LEDs:
Yellow = unused
Red = Hard disk access
Green = system is switched on | 4 | USB 2.0 |

Rear view:



1	Video monitor A/Video monitor B	1	Parallel interface.
2	Video inputs 1 - 30	1	VGA monitor
3	Audio inputs 1 - 10	1	2x USB 2.0
4	Alarm inputs 1 - 21	1	1x Ethernet (RJ45)
5	Alarm inputs 22 - 32	3	2x USB 2.0
6	Mains connection 100/240 VAC, 50/60 Hz (automatic switchover)	1	Line in (blue)
7	Biphase 1 - 4, malfunction outputs 1	4	Speaker out (green)
8	Mouse (green) - Keyboard (purple). If the keyboard is not connected via USB.	1	Microphone in (red), mono
9	Serial interface COM1	1	Second serial interface (COM2)
		5	
		1	Grabbers 1 - 5
		6	
		1	Free for optional PCI plug-in cards
		7	
		1	Relay outputs 1 - 16
		8	

Ordering information:



- 1 Type DiBos
- 2 Number of analog camera inputs
- 3 C1 version with max. 6 camera inputs
C2 version with max. 12 camera inputs
C3 version with max. 18 camera inputs
C4 version with max. 24 camera inputs
C5 version with max. 30 camera inputs
- 4 Disk size (x10 GB)
- 5 Version
R: Rack mount
SR: Rack mount built in SCSI adaptor and SCSI cable

E. g. : **DB 30 C5 200 R2**
30 channel DiBos with 2 TB storage

Ordering information

DB 06 C1 075 R2 DiBos Digital Video Recorder
Order number **DB06C1075R2**

DB 18 C3 100 R2 DiBos Digital Video Recorder
Order number **DB18C3100R2**

DB 18 C3 200 R2 DiBos Digital Video Recorder
18 channel DiBos with 2 TB HDD, DVD-RW, 16 IP devices.
Order number **DB18C3200R2**

DB 24 C4 100 R2 DiBos Digital Video Recorder
Order number **DB24C4100R2**

DB 24 C4 200 R2 DiBos Digital Video Recorder
24 channel DiBos with 2 TB HDD, DVD-RW, 32 IP devices.
Order number **DB24C4200R2**

DB 30 C5 025 R2 DiBos Digital Video Recorder
Order number **DB30C5025R2**

Accessories

DB EK 061 SCSI Card Adapter and SCSI Cable

Order number **DBEK061**

Represented by:

Americas:

Bosch Security Systems, Inc.
130 Perinton Parkway
Fairport, New York, 14450, USA
Phone: +1 800 289 0096
Fax: +1 585 223 9180
security.sales@us.bosch.com
www.boschsecurity.us

Europe, Middle East, Africa:

Bosch Security Systems B.V.
P.O. Box 80002
5617 BA Eindhoven, The Netherlands
Phone: + 31 40 2577 284
Fax: +31 40 2577 330
emea.securitysystems@bosch.com
www.boschsecurity.com

Asia-Pacific:

Robert Bosch (SEA) Pte Ltd, Security Systems
11 Bishan Street 21
Singapore 573943
Phone: +65 6571 2808
Fax: +65 6571 2699
apr.securitysystems@bosch.com
www.boschsecurity.asia

China:

Bosch (Shanghai) Security Systems Ltd.
201 Building, No. 333 Fuquan Road
North IBP
Changning District, Shanghai
200335 China
Phone +86 21 22181111
Fax: +86 21 22182398
www.boschsecurity.com.cn

America Latina:

Robert Bosch Ltda Security Systems Division
Via Anhanguera, Km 98
CEP 13065-900
Campinas, Sao Paulo, Brazil
Phone: +55 19 2103 2860
Fax: +55 19 2103 2862
latam.boschsecurity@bosch.com
www.boschsecurity.com