

**Up to 30 Watts**

Loudspeakers and tone generators provide high decibel communication for messaging, alert and evacuation in harsh and hazardous locations.

- Metallic and non-metallic housings
- Explosionproof and Class I, Division 2 horns and speakers
- Mounting brackets that allow a full 180° swivel
- Products designed for both conduit wiring and/or cable connection (NPT or metric entries available)
- Selectable tones

This range of loudspeakers, intended for use in potentially explosive gas and dust atmospheres, has a power rating of up to 30 Watts and is suitable for use in the harsh environmental conditions found offshore and onshore in the oil, gas and petrochemical industries.

The flamepaths, flare and body, are manufactured from a UV stable glass reinforced polyester. Stainless steel screws and mounting stirrup are incorporated to ensure a corrosion-free product.

**Applications:**

- Plant-wide alarm notification
- Audible process alarms

**Typical Industries:**

- Refineries
- Chemical plants
- Oil and gas exploration
- Marine terminals for transportation & storage

**DB16****Certifications and Compliances:**


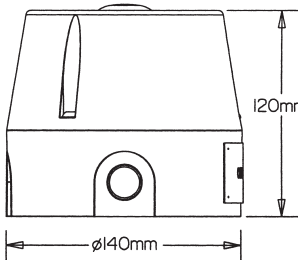
- UL Listed for USA and Canada
  - Hazardous locations:
    - Class I, Div. 2, Groups A, B, C, D\*
    - Class I, Zone 1, AExde IIB/IIC T3/T4\*
  - Ordinary locations: Signalling Speaker
- ATEX approved
- NEMA 4X & 6, IP66 and IP67
- Certified temperature:
  - 67°F to +104°F
  - 50°C to +40°C


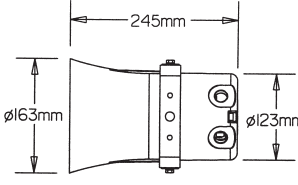
**Features and Benefits:**

- GRP corrosion-free flamepath
- Up to 112dBA at 30 Watts at 10 feet\*
- Power tapings via integral transformer
- Ratcheted swivel mounting stirrup
- Stainless steel fixtures
- 100V line or 8 ohm versions available

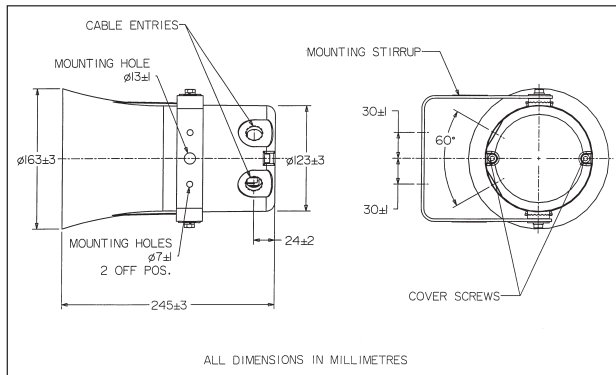
\*Model dependent.

## Up to 30 Watts

DB12		110dB(A) Sounder—Weatherproof & Heavy Duty			
	Certification UL Listed for:	Weatherproof			
	Certified Ambient Temperature	-55°C to +70°C			
	Ingress Protection	NEMA 4X & 6 IP66 & 67			
	Material	Corrosion-free GRP			
	Entries	Up to 3 x 20mm			
	Weight	1kg			
	No. of Tones	27 + 5 programmable			
Options		Body color, voltages 12V & 24V DC			
Certification	Voltage	Type	Ordering Code	Cat. #	Standard Product Configuration
CE Certification	115/230V AC	Single Stage	808003	<b>DB12115NN</b>	Weatherproof, dust-tight, no labels, choice of 27 tones, natural red finish, 3 x M20 knockouts
CE Certification	24V DC	Two Stage	869155	<b>DB12P024NN</b>	Weatherproof, choice of 27 tones, natural red finish, 3 x M20 knockouts

DB15		110dB(A) Tone Generator—Weatherproof & Heavy Duty			
	Certification UL Listed for:	Weatherproof			
	Certified Ambient Temperature	-55°C to +70°C			
	Ingress Protection	NEMA 4X & 6 IP66 & 67			
	Material	Corrosion-free GRP			
	Entries	2 x M20			
	Weight	2.6kg			
	No. of Tones	27 + 5 programmable			
Options		Body color, two stage alarm (DB15P) version, earth continuity, EOL resistor, voltages 12–48V DC, 110–254V AC			
Certification	Voltage	Type	Ordering Code	Cat. #	Standard Product Configuration
CE Certification	12–48V DC	Two Stage	808110	<b>DB15P048NN</b>	Weatherproof, dust-tight, no labels, choice of 27 tones, painted gray finish
CE Certification	12–48V DC	Two Stage	808115	<b>DB15P048NR</b>	Weatherproof, dust-tight, no labels, choice of 27 tones, painted red finish
CE Certification	240V AC	Single Stage	808120	<b>DB15240NN</b>	Weatherproof, dust-tight, choice of 27 tones, natural gray finish
CE Certification	240V AC	Single Stage	808125	<b>DB15240NR</b>	Weatherproof, dust-tight, choice of 27 tones, painted red finish

## Up to 30 Watts

**Tone Selection:**

- DB15:** 27 user selectable tones available. Additional 5 tones may be programmed.
- DB15P (Two stage unit):** Switchable between any two of the 27 tones by either:
- (i) Reversing the polarity of the supply, or
  - (ii) by a 3 wire common +ve system, switching between the two -ve lines.
- Note: Two stage unit available in DC versions (DB15P) only.

AFNOR NF S 32 001 compliant version available—contact sales office.

**Specification—DB15 Unit**

- Material:** Body & horn in UV stable, glass reinforced polyester  
Swivel bracket in stainless steel  
Cover screws in stainless steel
- Finish:** Body and horn, natural gray to RAL 7035 or epoxy paint coated to client's color requirements
- Sound Output:** DB15 117dB(A) maximum
- Volume Control:** Integral volume control

*Nominal Output (dBa)	Input Current (mA)
100	150
105	250
108	350
110	450
112	550

\*Output measured with 24V input voltage. Tone set to 970Hz continuous.

**Weight:** 2.6kg approx. dependent on model

**Temperature Range:** -55°C to +70°C

**Ingress Protection:** IP66 and IP67

**Voltage:** Up to 48V DC Up to 254V AC

**Current Consumption:**

V	I
12V DC	900mA
24V DC	600mA
48V DC	280mA
110V AC	150mA
120V AC	175mA
220V AC	93mA
240V AC	86mA
254V AC	80mA

**Terminals:** 4 x 2.5mm<sup>2</sup> (AC), 6 x 2.5mm<sup>2</sup> (DC)

**Earth Continuity:** Available

**Mounting:** Stainless steel bracket with ratchet facility

**Labels:** Duty and tag labels optional

**Cable Entries:** 2 x M20 ISO

**Ordering Requirements**

The following code is designed to help in the selection of the correct unit. Build up the reference number by inserting the code for each component into the appropriate box.

Unit Type

**DB15**  
**DB15P**

Voltage

Voltage	Code
12V DC	012
24V-48V DC	048
*110V AC	110
*120V AC	120
*240V AC	240
*DB15P not available in AC version.	

Options

 N

Color

 N