

DiBos Micro Digital Video Recorders - Version 8 (EMEA/APR)

www.boschsecurity.com



BOSCH
Invented for life



- ▶ Hybrid analog/IP MPEG4 digital video recorder
- ▶ Models for 6 and 12 analog cameras and up to 8 additional network cameras/video encoders
- ▶ View/record video at CIF/2CIF/4CIF resolution
- ▶ Web-browser remote access and viewing
- ▶ Camera tamper detection

DiBos Micro uses Bosch's proven state of the art digital recording and communications technology and takes video surveillance to a new level. It is an integral part of overall security solutions for a wide range of applications – including banks, large retailers, railway stations, airports, city centers, industrial facilities, and office buildings.

Customers can retrieve vital images and share information faster than ever before. They can better assess critical situations and take action immediately. Whether they're on site or at a remote network location, authorized personnel have quick, convenient access to information so they can operate more effectively and efficiently.

DiBos supports live viewing and recording at resolutions up to 4CIF. Users can store images at up to 180/150 ips (NTSC/PAL) on 12 composite video inputs. As many as 4 audio data streams can also be recorded on 12 video channels units.

Users can connect up to 8 additional IP video sources. This includes support for Bosch IP cameras (Dinion IP and AutoDome IP), Bosch MPEG4 network video encoders (VideoJet and VIP X Series), as well as JPEG images from numerous network camera manufacturers. DiBos can store up to 30/25 ips per attached network video device. Every network video

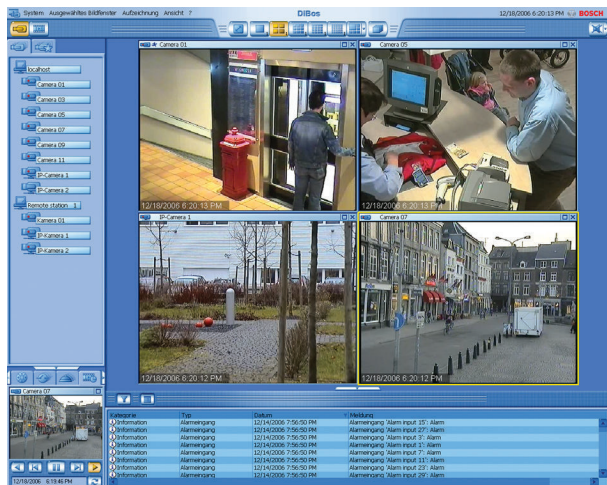
encoder can add one additional audio channel. In addition to Bosch MPEG4 network encoders, DiBos can receive JPEG images from network cameras from numerous manufacturers.

The system offers advanced features for viewing and very high flexibility in recording and image access. The real power of DiBos Micro is fast, convenient accessibility to images and information. If required, accessibility to images and information is possible round the clock and everywhere all over the world. Communication and access to DiBos Micro is possible via private or public networks. For these purposes the system can be connected to a variety of peripheral devices and systems.

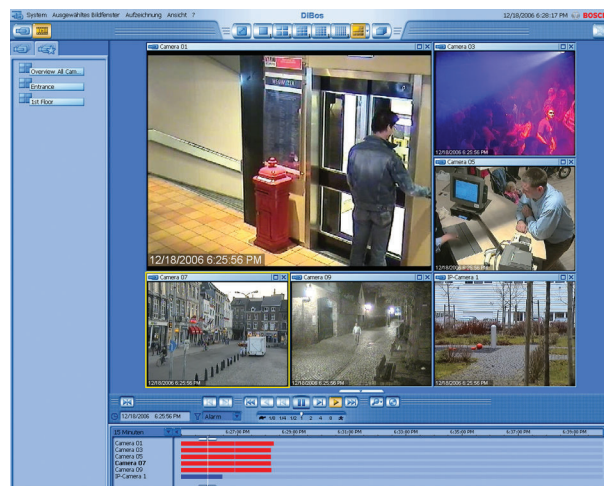
The unique, scalable GUI allows live and recorded images from multiple remote systems to be viewed from a single PC or another DiBos Micro. With this powerful tool, security managers can monitor and supervise various locations simultaneously. Cameras and viewing modes can be programmed or selected manually. Each camera offers in-window pan/tilt/zoom functionality from local or remote facilities. Images are displayed with date/time, location, camera name and status of connected devices such as detectors and sensors.

DiBos Micro can be programmed to respond to specific situations and events automatically. Minimal human intervention is necessary. In response to alarms, the system can be programmed to transmit images or messages to security personnel or security control center. Playback is easy thanks to familiar search and navigation functions in a tree structure. Images can be accessed locally or remotely via a company network or the Internet. The customer can select multiple different views from up to 30 cameras. Fast, powerful image search functions eliminate time-consuming manual searches. Functions include search for image changes, search for criteria such as camera number, recording date/time, and optional ATM transaction data, e. g. credit card number, bank code, account number, and/or amount withdrawn. To ensure high security, all access is controlled by user authorization. Profiles are assigned by the system administrator. Events, such as login, logoff, status changes, image transmission, and system shutdown are stored in a database. Video authentication is built in to ensure that DiBos images are not altered in any way. Various storage devices – such as external disk arrays, RAID and NAS devices, and external disk drives – may be used for export and backup of images. DiBos Micro supports Bilinx for pan/tilt/zoom and camera configuration via the video coax cable. The configuration wizard makes installation quick and easy. DiBos Micro serial ports can be connected to Bosch alarm panels, ATM, Allegiant matrices and foyer card readers.

Live mode



Playback mode

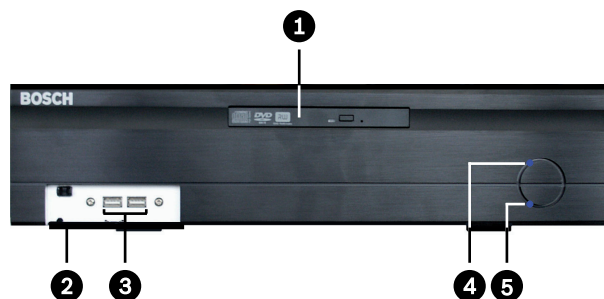


Certifications and Approvals

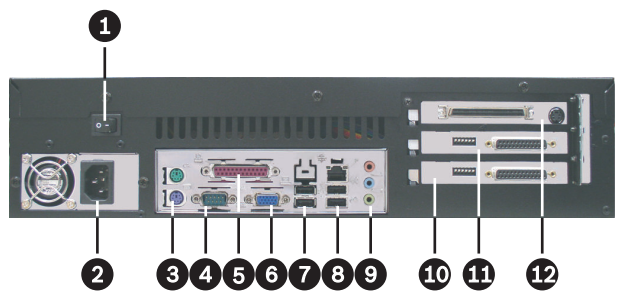
Region	Certification	
Europe	CE	-List
USA	FCC	-List
Europe	CE	

Installation/Configuration Notes

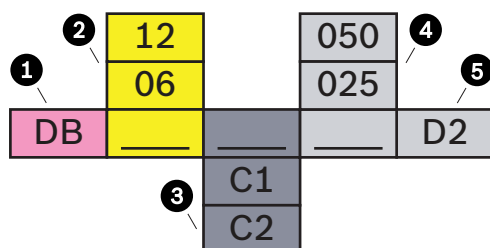
Front view:



- | | | | |
|---|--|---|------------------------------------|
| 1 | DVD-RW | 4 | Control LED: System is switched on |
| 2 | Front cover
Opened by pressing once on the cover. | 5 | Control LED: Hard disk access |
| 3 | 2x USB 2.0 | | |

Rear view:

- | | | | |
|---|---|----|---|
| 1 | On/Off switch | 7 | 2x USB 2.0
(e.g. for mouse and keyboard with USB connection) |
| 2 | Mains connection
100/240 VAC, 50/60 Hz
(automatic switchover) | 8 | 1x Ethernet (RJ45)
2x USB 2.0 |
| 3 | Mouse (green) - Keyboard
(purple). These connections should be used if the mouse and keyboard are not connected via USB. | 9 | Line in (blue)
Speaker out (green)
Microphone in (red), mono |
| 4 | Serial interface COM1 | 10 | Grabber 2 (camera 7 - 12) |
| 5 | Parallel interface. | 11 | Grabber 1 (camera 1 - 6) |
| 6 | VGA monitor | 12 | I/O card with plug for connecting the alarm inputs and relay outputs and socket for video monitor A and video monitor B |

Ordering information:

- 1 Type DiBos Micro
- 2 Number of analog camera inputs
- 3 C1 version with max. 6 camera inputs
C2 version with max. 12 camera inputs
- 4 Disk size (x10 GB)
- 5 Version

E. g. : **DB 12 C2 025 D2**

12 channel DiBos Micro with 250 GB storage

Technical Specifications**Electrical**

Compression Method	MPEG4			
Camera Inputs (analog)	1 connection cable with 6 BNC connectors (DB 06) or 2 connection cables, each with 6 BNC connectors (DB 12)			
Camera Inputs (IP)	8 video/audio MPEG4 data streams from Bosch/VCS network or JPEG devices			
Composite video signal	1 Vpp +/-3 dB (min. 0.7 Vpp, max. 1.4 Vpp), 75 Ohm			
Recording resolution (analog inputs)	PAL: 704 x 576 (4CIF), 704 x 288 Pixel (2CIF), 352 x 288 Pixel (CIF) NTSC: 704 x 480 (4CIF), 704 x 240 Pixel (2CIF), 352 x 240 Pixel (CIF)			
Recording resolution (IP inputs - Bosch IP devices)	PAL: 704 x 576 (4CIF/D1), 704 x 288 (2CIF), 464 x 576 (2/3 D1), 352 x 576 (1/2 D1), 352 x 288 (CIF), 176 x 144 (QCIF) NTSC: 704 x 480 (4CIF/D1), 704 x 240 (2CIF), 464 x 480 (2/3 D1), 352 x 480 (1/2 D1), 352 x 240 (CIF), 176 x 120 (QCIF)			
Recording rates (analog) for DiBos Micro models	IPS CIF (PAL)	IPS CIF (NTSC)	IPS 2CIF (PAL)	IPS 2CIF (NTSC)
DB 06 C1 xxx D2	75	90	50	60
DB 12 C2 xxx D2	150	180	100	120
Recording rates (analog) for DiBos Micro models	IPS 4CIF (PAL)	IPS 4CIF (NTSC)		
DB 06 C1 xxx D2	25	30		
DB 12 C2 xxx D2	50	60		
Recording rates per channel (video inputs analog)	PAL: 0,5; 1; 2; 3; 4; 5; 6; 8; 12,5; 25 ips NTSC: 0,5; 1; 2; 3; 5; 6; 7,5; 10; 15; 30 ips			
Image size (video inputs analog)	Configurable from approx. 1.5 kB to 30 kB			
Maximum recording rate (analog and IP)	50 Mbit per second			
Recording rates per channel (video inputs IP)	PAL: 0,5; 1; 2; 3; 4; 5; 6; 8; 12,5; 25 ips NTSC: 0,5; 1; 2; 3; 5; 6; 7,5; 10; 15; 30 ips			
Image size (video inputs IP)	Configurable bit streams up to 3 MBit per camera			

Supported single channel encoders Bosch VideoJet Series and Bosch VIP Series	VideoJet 10S, VideoJet 1000 VideoJet X10 VIP X1, VIP 10
Supported multi channel encoders Bosch VideoJet Series and Bosch VIP Series	VideoJet 8004, VideoJet 8004A VideoJet 8008, VideoJet 8008A VideoJet X20, VideoJet X40 VIP X2, VIP X2A, VIP X1600
Supported Bosch IP cameras	Dinion IP, AutoDome IP, FlexiDome IP, Megapixel IP
JPEG protocol	JPEG image request via HTTP
Supported JPEG cameras from other manufacturers	IP cameras from Axis, Sony and Mobotix. For further information please contact Bosch Security Systems
Audio Inputs	2 (DB 06) or 4 (DB 12), cinch connector, line in signal, 16 KHz sampling rate
Audio Outputs	1, line out signal, 1/8" mini-plug (3,5 mm)
Alarm Inputs (NO / NC)	12 Switching voltage (high): >2 VDC Switching voltage (low): <0,5 VDC Input voltage: max. 40 VDC Impedance: 22 kOhm pull up (+5 V)
Malfunction relay output	1 Voltage range: 30 VAC - 40 VDC Switching current: max. 500 mA AC or DC Switching power: max. 10 VA
Relay Outputs (NO / NC)	12 Voltage range: 30 VAC - 40 VDC Switching current: max. 500 mA AC or DC Switching power: max. 10 VA
Spot monitor output	2 CVBS outputs for full screen or sequences from connected analog cameras
Bilinx control	For AutoDome control and Dinion camera configuration via coax
PTZ control	Bilinx: Via coax cable, up to 12 AutoDome units. Biphase: Up to 12 AutoDome units. RS 232: Via Console Port of any Allegiant matrix.
Storage capacity (internal hard disk)	250 GB, 500 GB (8 GB are needed for the operating system and video system software)
Video output	1x VGA
Ethernet	10/100/1000 Base-T, bandwidth-limited
CPU	Intel Celeron (min. 2,8 GHz)
RAM	512 MB
RS 232	1 (to connect Bosch alarm panels and Allegiant matrices)
USB 2.0	6

DVD writer	Included; supported medias: CD-R, CD-RW, DVD-R
Power supply	100 / 240 VAC, 50 / 60 Hz (auto switch)
Typical power consumption	approx. 120 W
Power consumption	max. 140 W
Operating system	Microsoft Windows XP Embedded
Web Browser	Microsoft Internet Explorer 6 or higher, on Windows 2000 or Windows XP
Export of video/audio datas	DiBos-format or ASF-format on CD/DVD writer, USB-device or network drive
Image Printer	via USB (with Windows XP drivers)
External storage capacity	max. 16 TB

Supported protocols

	Panasonic, Pelco (D protocol), JVC, SAE	Bosch (Bilinx, Biphase, Allegiant)	Geutebrueck Lederer
Pan / tilt / zoom	Yes	Yes	Yes
Focus / Iris	Yes	Yes	Yes
Prepositions	Yes	Yes	Yes
AUX commands	No	Yes	No
Extended commands, e.g. wiper on	No	No	Yes

Mechanical facilities

Dimensions (H x W x D)	11.5 x 48.0 x 43 cm (4.5 x 19 x 16,9 inch), also in 19 inch rack mountable
Weight	Approx. 11.5 kg (25 lb), dependent on model

Environmental conditions

Operating temperature	+5 °C to +40 °C (41 °F to 104 °F)
Storage temperature	-10 °C to +60 °C (-14 °F to 140 °F)
Relative humidity in operation	15% to 80%, no condensation
Relative humidity when stored	8% to 80%, no condensation

Electromagnetic Compatibility (EMC)

• USA	FCC Part 15, Class B
-------	----------------------

• EU	EMC Directive 89/336/EEC Interference immunity: Conformance with EN 50130-4 requires an external UPS. The product is tested according to EN 50130-4, with the exception of voltage interruption to EN 50130-4:1995 Chapter 3/8/04. To comply with EN 50130-4, an external UPS is required. The UPS (Pulsar ellipse 500) is not included in the product and must be ordered separately. The UPS should be dimensioned for at least 480 VA. Interference emission: EN 55022, Class B Mains power fluctuations: EN 61000-3-2 Voltage fluctuations: EN 61000-3-3
Safety	
• USA	UL60950 Third edition (2000) CAN/CSA 22.2 No.60950-00, Third edition (2000)
• EU	EN 60950: 2000
Warranty	3 years
Approved anti virus software	Norton Anti Virus McAfee Virus Scan Trend Micro

Minimum requirements for computer with DiBos Receiver Software/IP Recorder Software (in brackets recommended requirements)

Operating system	Windows XP Professional, 32-bit versions; Windows Vista, 32-bit versions
CPU	Pentium 4, 3 GHz with Hyper Threading, (Core 2 Duo CPU)
RAM	1024 MB (2048 MB)
VGA card	32-Bit color depth (DirectX 9 Hardware Support, no shared memory)
Recording partition	Dedicated partition for recording
Network adapter	1000 Base-T, Gbit

Windows 2000, Windows XP and Windows Vista are registered trademarks of Microsoft Corporation.

Intel Pentium and Celeron are registered trademarks of Intel Corporation.

Ordering Information

DB 06 C1 025 DL2 DiBos Digital Video Recorder

6 channel DiBos Micro with 250 GB HDD, CD-RW, no IP devices.

Order number **DB06C1025DL2**

DB 06 C1 025 D2 DiBos Digital Video Recorder

6 channel DiBos Micro with 250 GB HDD, DVD-RW, 8 IP devices.

Order number **DB06C1025D2**

DB 06 C1 050 D2 DiBos Digital Video Recorder

6 channel DiBos Micro with 500 GB HDD, DVD-RW, 8 IP devices.

Order number **DB06C1050D2**

DB 12 C2 025 D2 DiBos Digital Video Recorder

12 channel DiBos Micro with 250 GB HDD, DVD-RW, 8 IP devices.

Order number **DB12C2025D2**

DB 12 C2 050 D2 DiBos Digital Video Recorder

12 channel DiBos Micro with 500 GB HDD, DVD-RW, 8 IP devices.

Order number **DB12C2050D2**

Accessories

DB EK 012 CS English Keyboard and Czech Manuals (only EMEA)

Order number **DBEK012CS**

DB EK 012 DA English Keyboard and Danish Manuals (only EMEA)

Order number **DBEK012DA**

DB EK 012 DE German Keyboard and German Manuals (only EMEA)

Order number **DBEK012DE**

DB EK 012 EL English Keyboard and Greek Manuals (only EMEA)

Order number **DBEK012EL**

DB EK 012 EN English Keyboard and English Manuals

Order number **DBEK012EN**

DB EK 012 ES English Keyboard and Spanish Manuals (only EMEA)

Order number **DBEK012ES**

DB EK 012 FI English Keyboard and Finnish Manuals (only EMEA)

Order number **DBEK012FI**

DB EK 012 FR French Keyboard and French Manuals (only EMEA)

Order number **DBEK012FR**

DB EK 012 HU English Keyboard and Hungarian Manuals (only EMEA)

Order number **DBEK012HU**

DB EK 012 IT English Keyboard and Italian Manuals (only EMEA)

Order number **DBEK012IT**

DB EK 012 NL English Keyboard and Dutch Manuals (only EMEA)

Order number **DBEK012NL**

DB EK 012 NO English Keyboard and Norwegian Manuals (only EMEA)

Order number **DBEK012NO**

DB EK 012 PL English Keyboard and Polish Manuals (only EMEA)

Order number **DBEK012PL**

DB EK 012 PT English Keyboard and Portuguese Manuals (only EMEA)Order number **DBEK012PT****DB EK 012 RU English Keyboard and Russian Manuals (only EMEA)**Order number **DBEK012RU****DB EK 012 SV Swedish Keyboard and Swedish Manuals (only EMEA)**Order number **DBEK012SV****DB EK 012 TR English Keyboard and Turkish Manuals (only EMEA)**Order number **DBEK012TR****DB EK 021 SCSI Card Adapter and SCSI Cable**

Built in the factory. Included SCSI cable. DiBos Micro: Only for DB 06, due to required PCI slot.

DiBos 19 inch: Not for DB 30 C5 100 R2 and DB 30 C5 160 R2, due to required PCI slot.

Order number **DBEK021****DB EK 061 SCSI Card Adapter and SCSI Cable**

Expansion. Included SCSI cable. DiBos Micro: Only for DB 06, due to required PCI slot.

Order number **DBEK061****DB SE 041 Tele Service Package for DiBos (only EMEA)**

PC Anyware Host Version 10.5

Order number **DBSE041****DB EK 831 OVS Interface Converter OVS**

RS 485/RS 232 interface converter.

Order number **DBEK831OVS****DB EK 823 9M Connection Cable 9-pole, between DTP3 and OVS**Order number **DBEK8239M****DB EK 721 RS 232 PCI Interface Expansion for RS 232 (only EMEA)**

PCI card for 2x RS 232. Requires one free PCI slot.

Order number **DBEK721RS232****DB EK 211 DCF Radio Clock Receiver DCF-77 (only EMEA)**

Requires one free RS 232 interface.

Order number **DBEK211DCF****DB EK 211 DCFC Extension Cable 50 m for DCF-77 (only EMEA)**Order number **DBEK211DCFC****DB EK 201 UPS Uninterruptable Power Supply UPS (only EMEA)**Order number **DBEK201UPS****Software Options****DB SE 016 DiBos ATM POS Bridge License**

Software interface via TCP/IP to Bosch ATM/POS bridge.

Order number **DBSE016****DB SE 017 DiBos IP Software License**

Software interface via TCP/IP socket connection to IP server providing POS, ATM or other data.

Order number **DBSE017****DB SE 031 Software Interface to Bosch Alarm Panels**

Connection via RS 232 to Bosch G Series, UGM 2020, UEZ 2000/1000, BZ 500, NZ/BZ 1060, NZ/BZ 1012, NZ 1008.

Order number **DBSE031****DB SR 002-B DiBos 8 Receiver SW Burning License**Order number **DBSR002-B****DB SW CD-DVD**

SW Recovery DVD and setup CD

Order number **DBSWCD-DVD**

Represented by:

Americas:

Bosch Security Systems, Inc.
130 Perinton Parkway
Fairport, New York, 14450, USA
Phone: +1 800 289 0096
Fax: +1 585 223 9180
security.sales@us.bosch.com
www.boschsecurity.us

Europe, Middle East, Africa:

Bosch Security Systems B.V.
P.O. Box 80002
5617 BA Eindhoven, The Netherlands
Phone: + 31 40 2577 284
Fax: +31 40 2577 330
emea.securitysystems@bosch.com
www.boschsecurity.com

Asia-Pacific:

Robert Bosch (SEA) Pte Ltd, Security
Systems
11 Bishan Street 21
Singapore 573943
Phone: +65 6571 2808
Fax: +65 6571 2699
apr.securitysystems@bosch.com
www.boschsecurity.asia

China:

Bosch (Shanghai) Security Systems Ltd.
201 Building, No. 333 Fuquan Road
North IBP
Changning District, Shanghai
200335 China
Phone +86 21 22181111
Fax: +86 21 22182398
www.boschsecurity.com.cn

America Latina:

Robert Bosch Ltda Security Systems Division
Via Anhanguera, Km 98
CEP 13065-900
Campinas, Sao Paulo, Brazil
Phone: +55 19 2103 2860
Fax: +55 19 2103 2862
al.securitysystems@bosch.com
www.boschsecurity.com