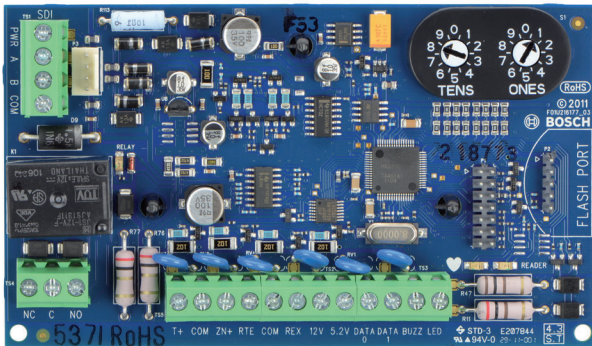


D9210C Access Control Interface Module

www.boschsecurity.com



BOSCH
Invented for life



- ▶ Direct interface to 26-bit Wiegand card readers
- ▶ Onboard buzzer output
- ▶ Supervised onboard point
- ▶ Request to Exit and Request to Enter inputs that can have a shunt only option
- ▶ Four door states: Locked, Unlocked, Secured, Fire Unlock

The D9210C Access Control Interface Module is a fully supervised, addressable SDI bus device that allows access control integration for Bosch G Series Control Panels. This highly reliable module offers 14 programmable levels of access authority. Authority for access is controlled by the level of the user, the time of day, the state of the door and the armed state of the area. Each of the authority restrictions can be controlled through automatic and manual functions. Users can be added to the system with local programming using RPS (Remote Programming Software), D5200, or with credentials using the Add User function through keypads.

Functions

Reader Input

- Standard 5-wire Wiegand interface.
- +5 VDC or +12 VDC supplied to power readers.
- Open collector output for reader LED.

Unsupervised Inputs

- Tamper – supports normally open devices.
- REX – supports normally open devices. Request to Exit on short.
- RTE – supports normally open devices. Request to Enter on short.

Supervised Input

- 1000Ω End of line resistor.

- Use for door contact.

Door States

Four-door states are controlled through the keypad, RPS (Remote Programming Software), scheduled events (Skeds) and automatic programmable functions in the D9210C parameters:

- Locked: Lock Relay de-activated thru valid credential or RTE (Request to Exit) input.
- Unlocked: allows the door to be opened for free access. Lock Relay is activated.
- Secured: does not allow access unless a Fire Unlock occurs. Valid credential or RTE will not activate relay.
- Fire Unlock: allows free access no matter what the previous door state or armed state is. This is a programmable option that can be used to allow free access into or out off the building upon a fire alarm.

Two automatic functions link the door state to the arming state of the area:

- Auto Door: When the area is disarmed, the door state is switched to “Unlocked.”
- Disarm on Open: with this function as "Yes," a user with valid access rights will activate the strike and disarm the system after the door is opened. With this function as "No," the area will disarm upon the strike activation.

Indicators

- Heartbeat LED: Blue LED blinks on and off when system is operational. A steady On or Off LED indicates a system error.
- Reader LED: Rapidly blinking LED indicates the Card data is being received. When the LED is off, no card data is being received.

D7412GV4	Control Panel
D9412GV3	Control Panel
D7412GV3	Control Panel
D9412GV2	Control Panel
D7412GV2	Control Panel
D9412G	Control Panel
D7412G	Control Panel

Certifications and approvals

USA	UL	D9210C Series: ALVY: (UL294): Access Control System Units AMCX: Central Station Alarm Units (UL1610), AOTX: Local Alarm Units (UL609), APAW: Police Station Alarm Units (UL365), APOU: Propriety Alarm Units (UL1076), NBSX: (UL1023): Household Burglar Alarm System Units, UOTU: (UL985): Control Units and Accessories – Household System Type, UOXX: Control Unit Accessories, System (UL864)
-----	----	---

Installation/configuration notes

The D9210C Access Control Interface Module is individually programmed through the control panel it is connected to.

Compatibility Information

Category	Commercial Code	Description	
Readers and Accessories	ARD-AYH12	EM Prox Wall Mount	
	ARD-AYJ12	EM Prox Mullion	
Accessories	ARD-AYK12	EM Prox Mini Mullion	
	ARD-AYQ12	EM Prox Wall Mount Vandal Resistant	
	ARD-AYCE65B	EM Prox or PIN Mullion	
	ARD-R10	HID iClass Mini Mullion	
	ARD-R40	HID iClass Wall Mount	
	D8223	HID Prox Wall Mount	
	D8224	HID Prox Mullion	
	D8224-SP	HID Prox Switch Plate Mount	
	D8225	HID Prox Mini Mullion	
	D8229	PIN Reader	
	Credentials	ACA-ATR13	EM Tokens
		ACD-ATR11ISO	EM Cards
		ACD-ATR14CS	EM Clamshell Cards
ACD-IC2K26-50		iClass Cards	
ACT-IC2K26-10		iClass Tokens	
D8236-10		HID Prox Cards	
D8236KF-10		HID Prox Tokens	
Systems	D9412GV4	Control Panel	

Parts included

Quantity	Component
1	D9210C
1	1 kΩ ½ watt end of line resistor
3	# 6x3/8 self-tapping sheet metal screws to secure the module to mounting skirt or enclosure

Technical specifications

Environmental Considerations

Relative Humidity	Up to 93% non-condensing
Temperature Operating	0° to +49°C (+32° to +120°F)

Electrical Requirements

Current Draw:	110 mA max (Board) +150 mA max (Reader)
Voltage (operating)	8.5 – 13.8 V

Reader Requirements

+5.2 VDC	Power out to 5.2 VDC card reader	5 V +/- 0.25 V for 20 to 140 mA load 150 mA maximum continuous
DATA 0	Data 0 input from card reader	High impedance input with 47 kΩ pull up to +5.2 V
DATA 1	Data 1 input from card reader	High impedance input with 47 kΩ pull up to +5.2 V
BUZZER	Buzzer common upon strike activation	Sink up to 35 mA from 5-14 VDC source Output impedance is 100Ω
LED	LED common upon card read response and strike activation	Sink up to 35 mA from 5-14 VDC source Output impedance is 180Ω

Lock Relay (Dry Contact SPDT)

Supports:	12 VDC at 2A 24 VDC at 2.5 A 12/24 VAC at 1 A
-----------	---

Compatibility

Compatible Panels	Bosch Security Systems, Inc. D9412GV4/D7412GV4/ D9412GV3/D7412GV3/ D9412GV2/D7412GV2/D9412G/ D7412G/D9412/D7412
-------------------	---

Mechanical

Dimensions	(76.2 mm x 127 mm x 25.4 mm) 3 in x 5 in x 1 in
------------	--

Trademarks

Wiegand is a copyright of HID GLOBAL.

Ordering information

D9210C Access Control Interface Module

Order number **D9210C**

Accessories

D203 Enclosure

Works with input, output, and receiver modules where the circuit boards have through-hole or three-point mounting systems.

Order number **D203**

D8103 Enclosure

Grey steel enclosure measuring 41 cm x 41 cm x 9 cm (16 in. x 16 in. x 3.5 in.).

Order number **D8103**

D8108A Attack Resistant Enclosure

Grey steel enclosure measuring 41 cm x 41 cm x 9 cm (16 in. x 16 in. x 3.5 in.). UL Listed. Includes lock and key set. Requires the D2402 Mounting Plate.

Order number **D8108A**

D8109 Fire Enclosure

Red steel enclosure measuring 40.6 cm x 40.6 cm x 8.9 cm (16 in. x 16 in. x 3.5 in.). UL Listed. Includes a lock and key set.

Order number **D8109**

Represented by:

Americas:

Bosch Security Systems, Inc.
130 Perinton Parkway
Fairport, New York, 14450, USA
Phone: +1 800 289 0096
Fax: +1 585 223 9180
security.sales@us.bosch.com
www.boschsecurity.us

Europe, Middle East, Africa:

Bosch Security Systems B.V.
P.O. Box 80002
5617 BA Eindhoven, The Netherlands
Phone: + 31 40 2577 284
Fax: +31 40 2577 330
emea.securitysystems@bosch.com
www.boschsecurity.com

Asia-Pacific:

Robert Bosch (SEA) Pte Ltd, Security Systems
11 Bishan Street 21
Singapore 573943
Phone: +65 6571 2808
Fax: +65 6571 2699
apr.securitysystems@bosch.com
www.boschsecurity.asia

China:

Bosch (Shanghai) Security Systems Ltd.
201 Building, No. 333 Fuquan Road
North IBP
Changning District, Shanghai
200335 China
Phone +86 21 22181111
Fax: +86 21 22182398
www.boschsecurity.com.cn

America Latina:

Robert Bosch Ltda Security Systems Division
Via Anhanguera, Km 98
CEP 13065-900
Campinas, Sao Paulo, Brazil
Phone: +55 19 2103 2860
Fax: +55 19 2103 2862
latam.boschsecurity@bosch.com
www.boschsecurity.com