



MAGNETIC LOCKS

FEATURES

- COMPATIBLE WITH ALL ACCESS/EGRESS SYSTEMS
- ALUMINUM / STAINLESS CASINGS ARE WEATHER AND VANDAL RESISTANT
- SELECTABLE 12V/24V DC OPERATION
- ON BOARD MOV'S PROVIDE PROTECTION AGAINST VOLTAGE SPIKES AND SURGES
- ASSORTED MOUNTING BRACKETS AND FILLER PLATES AVAILABLE

ITEM	MODEL	DESCRIPTION	CURRENT DRAW	DIMENSIONS
<b>1200 LBS. SURFACE MOUNT SINGLE DOOR</b> 	CX-91S-12	Basic	500 mA @12V 250 mA @24V	10 1/2" x 2 7/8" x 1 7/8" (267 mm x 73 mm x 48 mm)
	CX-91S-12TDS	c/w Adjustable Timer, Lock Sensor, Door Status Switch, Relay & LED		
<b>1200 LBS. SURFACE MOUNT DOUBLE DOORS</b> 	CX-92S-12	Basic	2 x 500 mA @12V 2 x 250 mA @24V	21" x 2 7/8" x 1 7/8" (533 mm x 73 mm x 48 mm)
	CX-92S-12TDS	c/w Adjustable Timer, Lock Sensor, Door Status Switch, Relay & LED		
<b>600 LBS. SURFACE MOUNT SINGLE DOOR</b> 	CX-91S-06	Basic	2 x 500 mA @12V 2 x 250 mA @24V	9 7/8" x 1 7/8" x 1" (251 mm x 48 mm x 25 mm)
	CX-91S-06TDS	c/w Adjustable Timer, Lock Sensor, Door Status Switch, Relay & LED		
<b>600 LBS. SURFACE MOUNT DOUBLE DOORS</b> 	CX-92S-06	Basic	2 x 500 mA @12V 2 x 250 mA @24V	19 5/8" x 1 7/8" x 11/16" (498 mm x 48 mm x 17 mm)
	CX-92S-06TDS	c/w Adjustable Timer, Lock Sensor, Door Status Switch, Relay & LED		
<b>600 LBS. MORTISE MOUNT SINGLE DOOR</b> 	CX-91M-06	Basic	480 mA @12V 240 mA @24V	9" x 1 1/2" x 1 1/8" (229 mm x 38 mm x 29 mm)
	CX-91M-06TLS	c/w Adjustable Timer & Lock Sensor/Relay		
<b>300 LBS. SURFACE MOUNT SINGLE DOOR</b> 	CX-90S-03	Basic	360 mA @12V 180 mA @24V	6 1/2" x 1 3/8" x 13/16" (165 mm x 35 mm x 21 mm)
<b>300 LBS. MORTISE MOUNT SINGLE DOOR</b> 	CX-90M-03	Basic	360 mA @12V 180 mA @24V	8" x 1 3/8" x 13/16" (203 mm x 35 mm x 21 mm)
<b>1200 LBS. SURFACE MOUNT GATE LOCK</b> 	CX-94S-12LS	c/w Lock Sensor/Relay	500 mA @12V 250 mA @24V	10 5/8" x 1 3/8" x 1 1/4" (270 mm x 35 mm x 32 mm)
<b>2600 LBS. SHEAR LOCK</b> <ul style="list-style-type: none"> <li>▪ Self aligning</li> <li>▪ Ultra low current draw</li> <li>▪ Compact mortise mount</li> </ul>	CX-93M-26LS	c/w Lock Sensor/Relay	480 mA @12V 240 mA @24V	9 1/16" x 1 1/4" x 1 1/16" (230 mm x 32 mm x 27 mm)

ELECTRIC STRIKES

MAGNETIC LOCKS

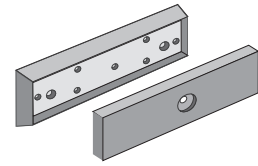
RELAYS & TIMERS

TRANSFORMERS & POWER SUPPLIES

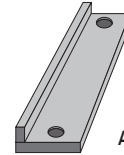
# MAGNETIC LOCKS



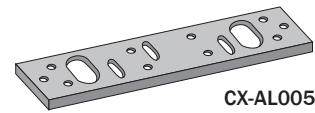
MAGNETIC LOCK ACCESSORIES			
ITEM	MODEL	DESCRIPTION	DIMENSIONS
ARMATURE HOUSING	CX-0001	For 1200 lbs. Magnet	7 15/16" x 3" x 5/8" (202mm x 76mm x 16mm)
	CX-0011	For 600 lbs. Magnet	7 15/16" x 2 3/16" x 5/8" (202mm x 56mm x 16mm)
ADJUSTABLE L BRACKET	CX-1001	For 1200 lbs. Magnet	10 1/2" x 3" x 1 1/2" (267mm x 76mm x 38mm)
	CX-1011	For 600 lbs. Magnet	9 13/16" x 1 15/16" x 1 1/8" (250mm x 49mm x 29mm)
SET OF L & Z BRACKETS	CX-1002	For 1200 lbs. Magnet	10 1/2" x 3" x 1 13/16" (267mm x 76mm x 46mm)
	CX-1012	For 600 lbs. Magnet	6 5/16" x 2 1/2" x 2 1/2" (160mm x 64mm x 64mm) 9 13/16" x 1 13/16" x 1 1/8" (250mm x 46mm x 29mm) 6 3/16" x 2" x 2" (160mm x 51mm x 51mm)
ANGLE BRACKET	CX-1003	For 1200 & 600 lbs. Mags	10 1/2" x 1 1/2" x 1" (267mm x 38mm x 25mm)
SPACER BAR	CX-1004	For 1200 & 600 lbs. Mags	10 1/2" x 11/16" x 5/8" (267mm x 17mm x 16mm)
STAINLESS STEEL SURFACE MOUNTING KIT	CX-1008	For 2600 lbs. Shear Lock	9 1/4" x 1 5/8" x 1 1/2" (235mm x 41mm x 38mm)
GLASS DOOR MOUNTING KIT	CX-1013	For 1200 and 600 lbs. Mags, use on 1/2" - 3/4" thick doors	7 1/4" x 2 7/16" x 1 1/4" (184mm x 62mm x 32mm)
MOUNTING BRACKET/SPACER	CX-AL005	For 600 lbs. Mags	9 7/8" x 1" x 3/16" (251mm x 25mm x 5mm)
MOUNTING BRACKET/SPACER	CX-AL015	For 1200 lbs. Mags	10 1/2" x 1 9/16" x 1/4" (267mm x 40mm x 32mm)



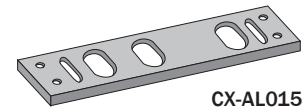
**CX-0001 and CX-0011  
Armature Housing**



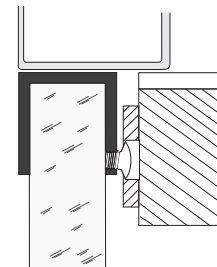
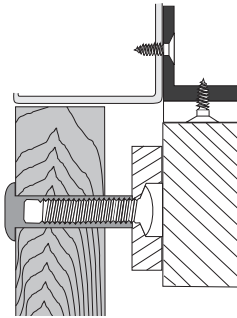
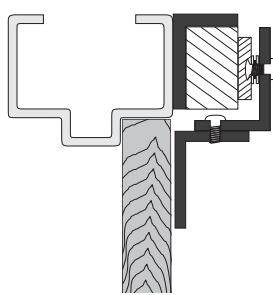
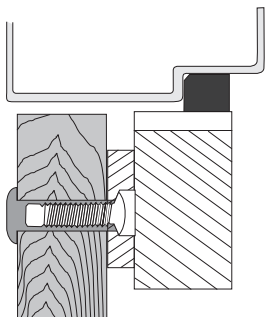
**CX-1003  
Angle Bracket**



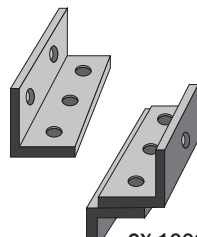
**CX-AL005  
Mounting  
Bracket/Spacer**



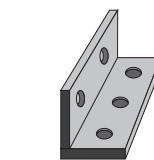
**CX-AL015  
Mounting  
Bracket/Spacer**



**CX-1004  
Spacer Bar**



**CX-1002/CX-1012  
Set of L & Z Brackets**



**CX-1001/CX-1011  
Adjustable L Bracket**



**CX-1013  
Glass Door  
Mounting Kit**



5502 Timberlea Blvd. Mississauga, ON Canada L4W 2T7 • Toll Free: 1 877 226-3369 (CAMDEN9)  
Tel: (905) 366-3377 • Fax: (905) 366-3378 • E-mail: info@camdencontrols.com • www.camdencontrols.com

LIT-SP-MAGLOCK



Certified ISO 9001: 2008

FS 541752