



Lazerpoint™ CM-TXLF Series FOB Style Transmitters Installation Instructions



Section 1

General Description

Camden Lazerpoint™ Radio Controls comprise the following models:

- CM-TXLF-1, CM-TXLF-2, & CM-TXLF-4 Key Fob Transmitters, as well as;
- CM-TX-9 Wall switch ready transmitter
- CM-TX-99 Plug-in 2-Channel Transmitter
- CM-RX-91 Basic Receiver
- CM-RX-92 Full function (dual relay) Receiver.

These instructions cover the TXLF transmitters.

Camden Key Fob transmitters utilize readily available CR-2032 Lithium batteries, and special circuitry to assure long life. A proprietary bi-colour LED circuit is used to announce wireless activation, low battery, & Battery Gas Gauge™ conditions.

Section 2

Installation

Mounting

Camden TXLF Fobs can be attached to a key chain using the included ring.

Fobs can also be mounted to a wheelchair by using accessory number # CM-TXLFM Mounting Base. This unique accessory converts any of the Mini Fobs to a full size unit which may be clipped to a belt or sun-visor, or fastened to a desk or counter for reception use. See our Lazerpoint™ spec sheet or TXLFM Instruction manual for further details.

The CR-2032 battery is pre-installed in the Fob. Simply press the button and observe the GREEN LED, which indicates proper transmission.

Test the battery strength by pressing and holding the button for approximately 5 seconds. The LED should flash RED 5 times, meaning the battery is at full capacity. This is the Battery Gas Gauge™ feature. If the LED flashes RED only 1 - 2 times, you should change the battery for a fresh (new) one. See instructions at right.

When the battery is low and needs to be changed, the LED

will indicate a slow red flash — 1 flash per second. The unit will still continue to function (transmit) for a time, but the battery should be changed as soon as possible.

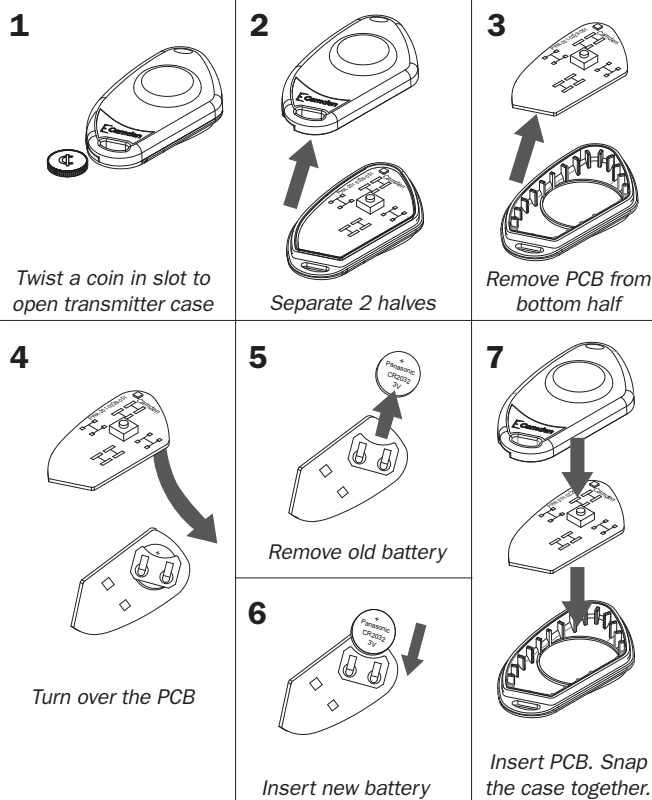
Learning the Transmitter(s) to the Receiver

To learn the transmitter into an RX-91 or RX-92 receiver, press the PB1 (or PB2) button on the Receiver using a small blunt object such as a small blade screwdriver or similar. Within 10 seconds, press the button on the TXLF transmitter. The Green LED Array will flash once to confirm enrollment. Repeat with any additional transmitters. Pressing the learned transmitter again will signal the receiver that you are finished programming and LED's 1 & 2 will flash, in an alternating sequence. Pressing the transmitter a third time will activate the relay and corresponding LED, and also the device connected to the relay contacts.

For multiple button FOBS – TXLF-2 & TXLF-4, learn the desired button into one receiver, and the other button(s) into additional receivers. (You could also learn Button 1 into Channel 1 of the RX-92, and Button 2 into Channel 2 of the same RX-92.)

Refer to the RX-91 or RX-92 receiver for further programming instructions.

Replacing the Battery



Section 3

Technical Data

Models:	TXLF-1, TXLF-2, & TXLF-4
Buttons / Channels:	1, 2, & 4 respectively.
Transmit Frequency:	902 / 915.25 / 928 MHz (spread spectrum technology)
Codes:	1 million (20 bit) codes
Size:	2 9/16" L x 1 9/16" W x 5/8" D (102mm x 42mm x 16mm)
LED Indicator:	Used for transmit status (green), Low Battery, and Battery Gas Gauge™ indicator (red).
Power:	1 x CR-2032 Lithium battery
Battery life:	Minimum 115,000 operations
Range:	Over 250 ft (76 m) open area
Temperature rating:	-40F to 185F (-40C to +85C)

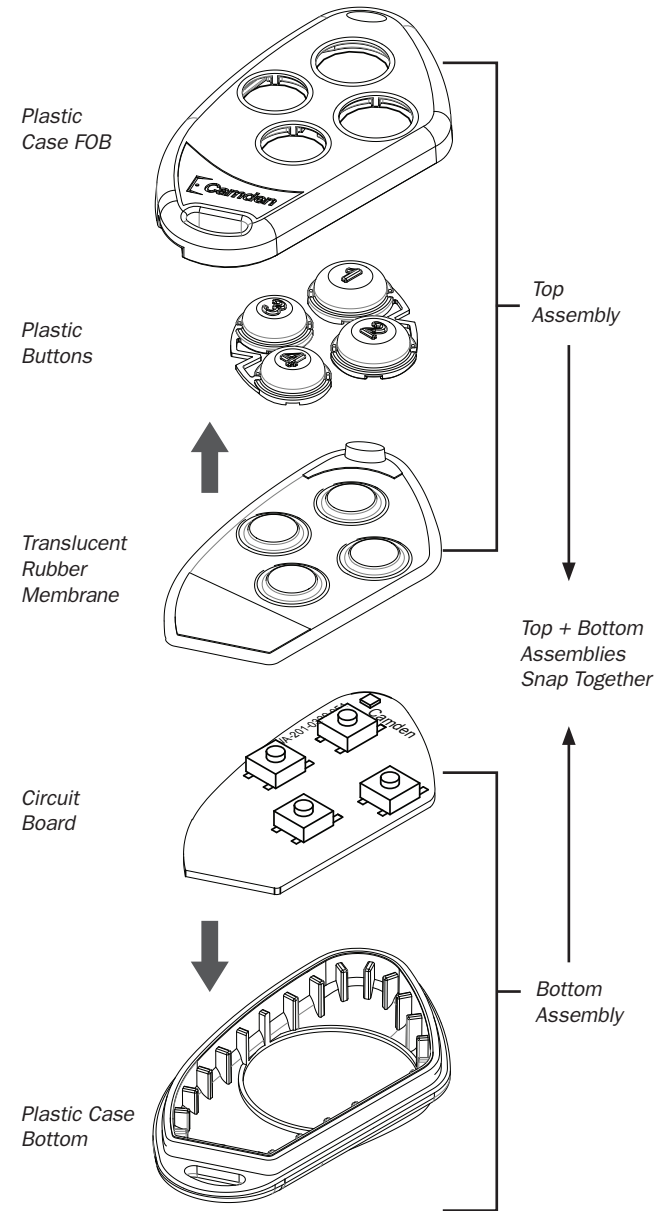
Section 4

Warranty

Camden Door Controls guarantees the CM TXLF series transmitters to be free from manufacturing defects for 3 years from date of sale. If during the first 3 years a TXLF transmitter fails to perform correctly, it may be returned to our factory where it will be repaired or replaced (at our discretion) without charge. Except as stated herein, Camden extends no warranties expressed or implied regarding function, performance or service.

Batteries are exempt from this warranty.

Assembly Instructions



Push Buttons



Keypads



Strikes



Magnetic Locks



Key Switches



Relays & Timers



Access Control



5502 Timberlea Blvd.,
Mississauga, ON Canada
L4W 2T7

www.camdencontrols.com
Toll Free: 1.877.226.3369

File: CM-TXLF Transmitter Manual.indd- Rev1
Revised: July 3rd, 2014
Part No: 40-82B160