

Section 1

General Description

Camden Aura™, Models CM-54BR & CM-54GR provide the Industry's 1st "Changing State" illuminated switch enclosures.

They offer field selectable blue/red or green/red illumination, activated directly by the switch or remotely by a relay* such as our CX-33 or EMF-2, a time-clock or access control system.

User selectable features include a 3 Amp Form C relay, and piezo speaker for audible annunciation, as well as control over the idle and active LED colours.

Another exclusive is the ability to plug in a TX-9 RF transmitter, thereby requiring only 2 conductors be run for power (& **no batteries required**) !!

The box is impact and flame resistant black ABS, and compatible with any Camden CM-41, CM-45, or CM-46 series switch.

The illumination is provided by an array of super-bright and energy efficient LED's which can be powered by 12 or 24 volts AC/DC.

Section 2

Setup

Switch SW1 contains a bank of 4 dipswitches. Dipswitch #1 turns the speaker on or off. Dipswitch #2 toggles operation of the relay, and #3 allows you to chose whether the colour will be changed locally via the push switch, or remotely. (Dipswitch #4 is not used at this time)

***Note:** The CX-22 Washroom relay *may* be used with the Aura™, however an isolating relay must be wired in parallel with the lock, and the relays' dry contact output wired into the CM-54BR/GR.

Switch Table

Switch	Position	Description
SW1	1	SPEAKER On to enable operation of the speaker with activation of the push button
	2	RELAY On to enable operation of the relay with activation of the push button
	3	REMOTE / LOCAL On to enable LED colour change from idle to Active with press of the push button.
	4	Not used

Colour selection is made with Switch SW2.

You first chose the Idle colour – Red, or Green/Blue, or off, and then the Active colour – Red, or Green/Blue, or off.

Switch	Position	Description
SW2	1	ON = Red LED when Idle.
	2	ON = G/B LED when Idle
	3	ON = Red LED when Active
	4	ON = G/B LED when Active

If dipswitches 1 & 2 are both OFF, then no illumination will be present in idle state. Likewise, if both dipswitches 3 & 4 are both OFF, then no illumination will be present in the active state.

Once all dipswitches are set, proceed to Section 3 - Installation.

Section 3 Installation

NOTE: If you will be including the optional Aura™ signage, follow that product's installation instructions *before* installing Aura™.

1. Determine the wire access location and drill hole of sufficient size, or use center knock-out plug. Drill the four required mounting holes. (11/64" min.) There are four indents provided on 3" centers for your convenience. (see Diagram 1)
2. Pull wiring through access hole, and mount the box to wall using 4 screws.
3. Remove circuit board from package and locate into the box (orientation - you should be able to read the writing next to the dip switches). Pull the wire through the hole in centre of circuit board, and then secure with the two small self- tapping screws (provided).
- 4.a Wire as per diagram 2 (typical installation). Route the switch wiring through opaque diffuser panel, and install diffuser panel into box. It should fit snugly.
- 4.b If using a TX-9 transmitter to send the signal to an RX-91 or RX-92 Receiver, attach the transmitter and wire it **before** installing circuit board into the enclosure and fitting diffuser. See Diagram 3.
5. Screw in two #6-32 Allen-head screws (provided with switch) into the threaded center inserts, then attach wires to switch and install switch over screws. Using the Allen key (provided), locate the screws and tighten (by hand only).
6. Connect power and test for proper operation.

Section 4 Technical Data

Model	CM-54GR / CM-54BR
Dimensions	5 1/4" H x 5 1/4" W X 2 1/8" D (134 mm x 134 mm x 54 mm)
Construction	Flame-resistant black ABS (Insert – translucent ABS)
Finish	Attractive pebble finish
Mounting	4 x #12 wood screws with anchors
Input Voltage	12 or 24V AC/DC
Output Voltage	3 Volts DC for TX-9 (only)
Current draw	150 mA (max)
Sounder	3200 ± 300 Hz @ 85 dB
Lumina	Red: 14.8 lumens, 1600 mW; Green: 3.8 lumens, 330 mW, Blue: 1.2 lumens, 380 mW
Relay Contact	1 x Form C
Contact Rating	3A @ 30 VDC

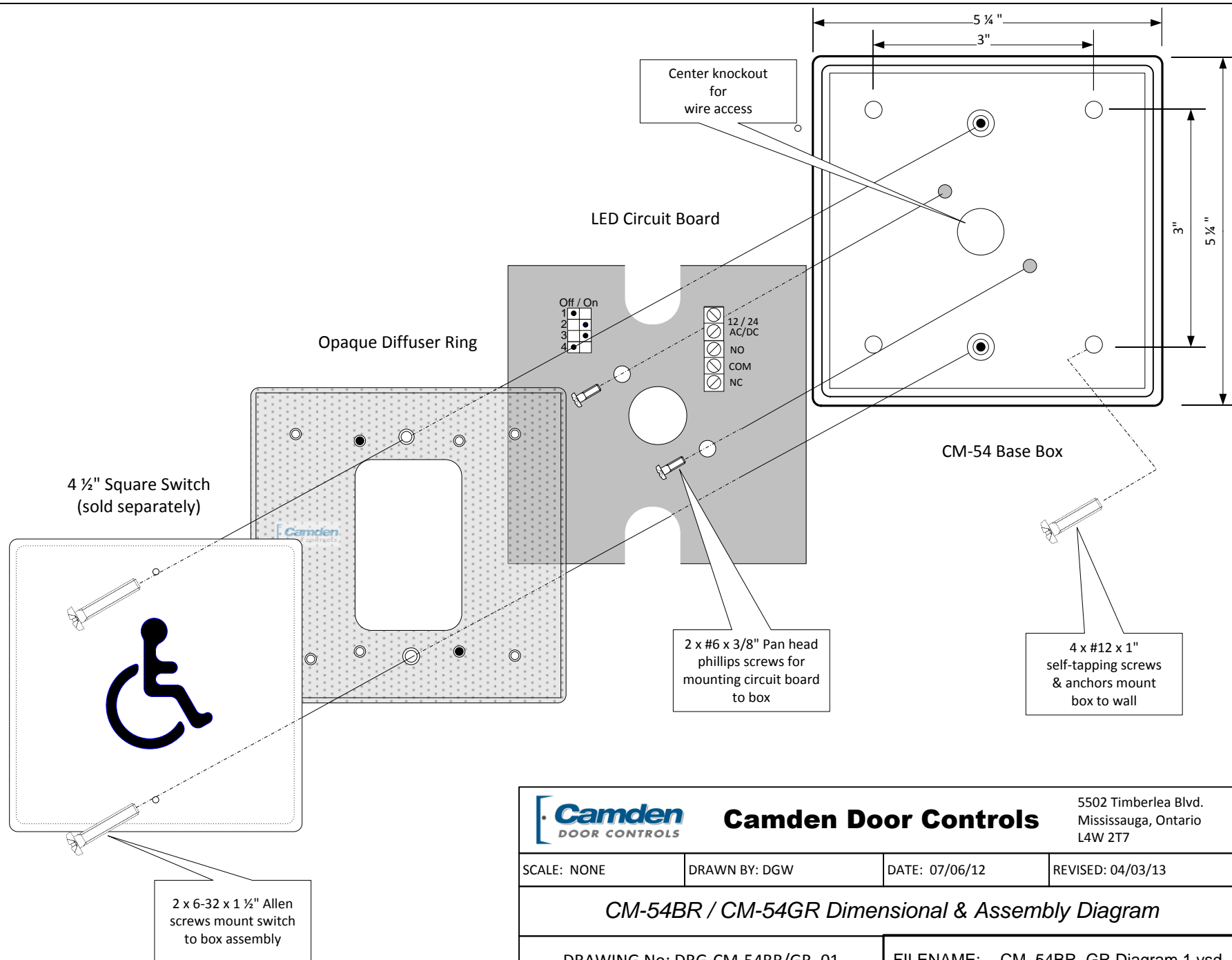
Section 5 Warranty

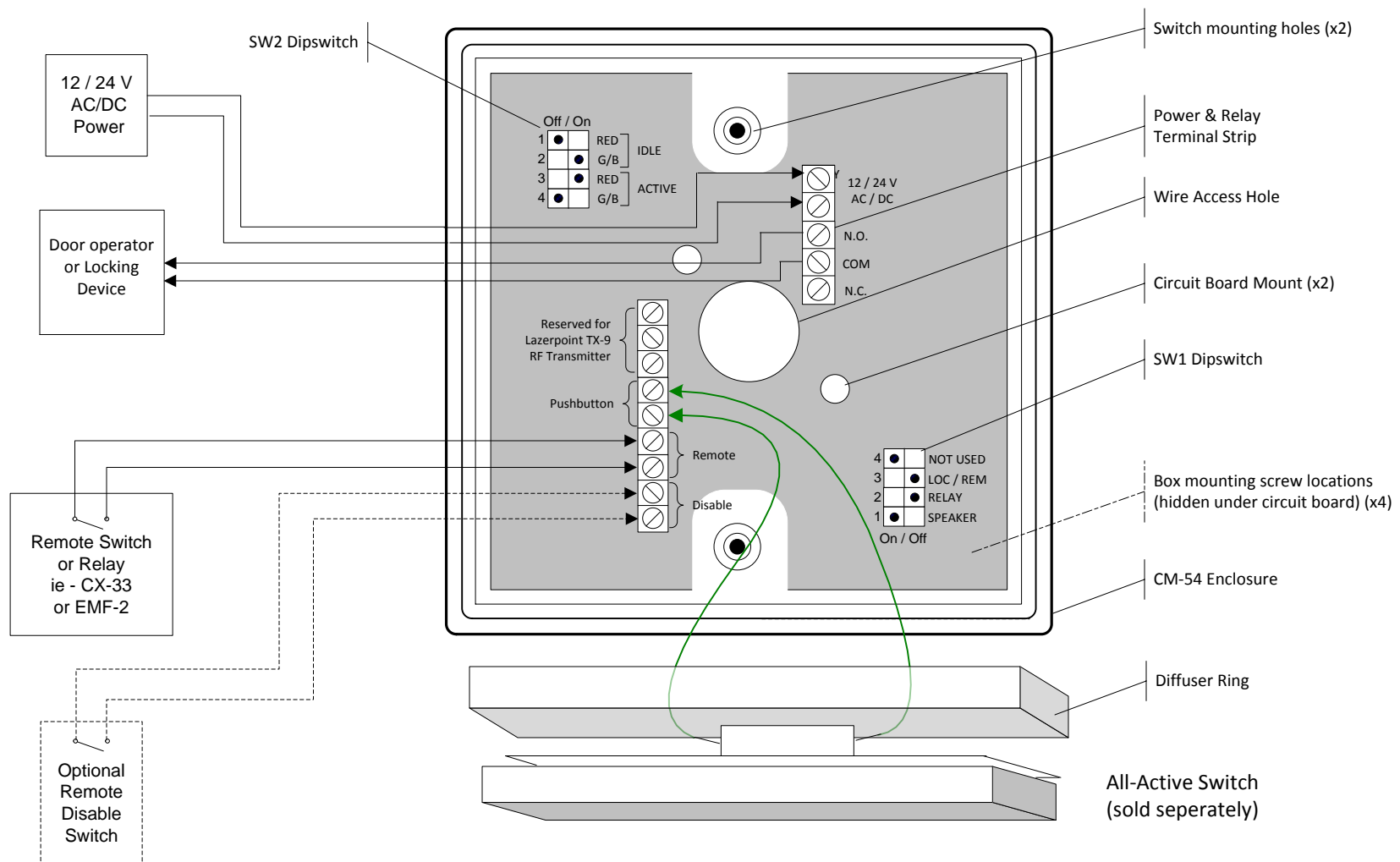
Camden Door Controls guarantees the Aura™ (CM-54BR & CM-54GR series) to be free from manufacturing defects for 3 years from date of sale. If, during the first 3 years, the Aura™ fails to perform correctly, it may be returned to our factory where it will be repaired or replaced (at our discretion) without charge. Except as stated herein, Camden extends no warranties expressed or implied regarding function, performance or service.

Questions?

Call us toll-free at 1-877-226-3369







NOTES:

1. Power terminals are not polarity sensitive.
2. Typical installation shown, where remote device changes LED colour. If its desired to have switch activation change LED colour, then set REMote/LOCAL dip on SW1 to LOCAL, and do not wire to the REMOTE terminals.



Camden Door Controls

5502 Timberlea Blvd.
Mississauga, Ontario
L4W 2T7

SCALE: NONE

DRAWN BY: DGW

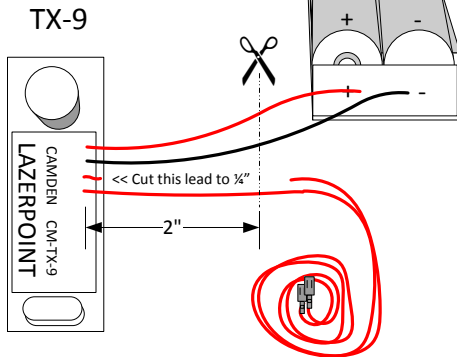
DATE: 07/06/12

REVISED:04/04/13

CM-54BR / CM-54GR Wiring Diagram (Typical)

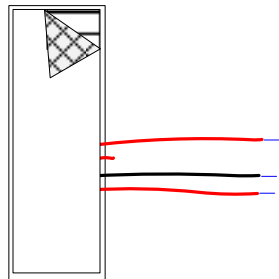
DRAWING No: DRG-CM-54BRGR_02

FILENAME: CM_54BR_GR Diagram 2.vsd



STEP 1

Cut the middle red lead to $\frac{1}{4}$ " as it is not used. Cut both battery leads, and the remaining switch lead to approximately 2" long. Strip the insulation back on the 3 long ends to approximately $\frac{1}{4}$ ".



STEP 2

Turn over, and remove release paper from double sided tape. Line up and carefully install TX-9 on Aura circuit board as shown above right

NOTES:

1. 12/24 Power terminals are not polarity sensitive.
2. This installation is intended for 2-wire retrofit applications.

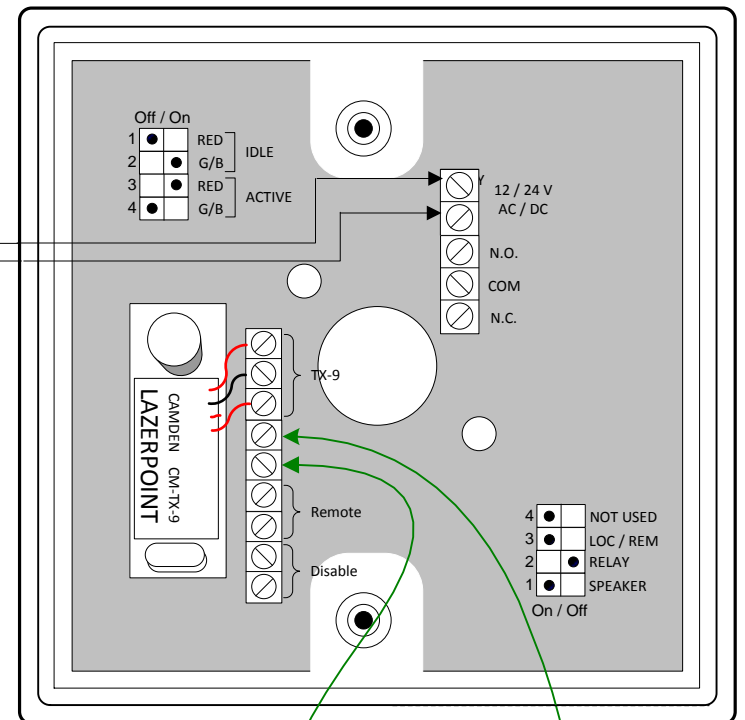
12 / 24 V
AC/DC
Power

STEP 3

Connect the 3 wires from the TX-9 to the circuit board exactly as shown. The middle red wire that was cut short is not used.

STEP 4

Install circuit board in box, & connect the 2 power wires as shown. Set dipswitches for desired operation. Install diffuser, connect push switch wires to terminal strip, then install switch. Test for proper operation.



Diffuser

Switch



Camden Door Controls

5502 Timberlea Blvd.
Mississauga, Ontario
L4W 2T7

SCALE: NONE

DRAWN BY: DGW

DATE: 07/06/12

REVISED:04/22/13

Wiring Diagram for CM-54 BR/GR & TX-9

DRAWING No: DRG-CM-54BRGR_03

FILENAME: CM_54BR_GR Diagram 3.vsd