



>>>4-CHANNEL, PoE NETWORK VIDEO RECORDER



NETWORK VIDEO RECORDER **NVR4P**



- > Connect and Record up to 4 IP Cameras (via 4 PoE Ports or up to 4 non-PoE Cameras through Separate Network "IP CAM" port)
- > Real Time Recording of all Channels at Full HD 1920 x 1080 Resolution and 20-fps at 2048 x 1536 (3MP) Resolution
- > Embedded PoE Switch for all Channels
- > H.264 Compression for Best-in-Class Recording and Storage Performance
- > Concurrent Full HD Display on HDMI and VGA Monitor Outputs
- > View and Manage up to 64 NVR's with included Intelligent Video Surveillance Management Software: ATVision IP
- > Up to 10 Simultaneous Connections through Remote Monitoring Software
- > Supports Maximum of 2 Hard Disk Drives Internally and 1 e-SATA External Device
- > ONVIF Compliant for Network Video Interoperability
- > Powerful Pentaplex Functionality with Simultaneous Live, Recording, Playback, Backup and Network
- > Easy Plug and Play Functionality with Automatic Device Discovery and Display
- > Remote Compatibility with iPhone, iPad, Android
- > PTZ Camera Control by RS-485 and via Network
- > Self-diagnosis and Hardware Watchdog System for Checking Errors and Restoration of Functionality

NETWORK VIDEO RECORDER

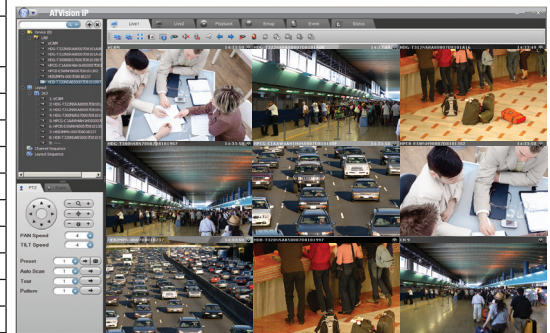
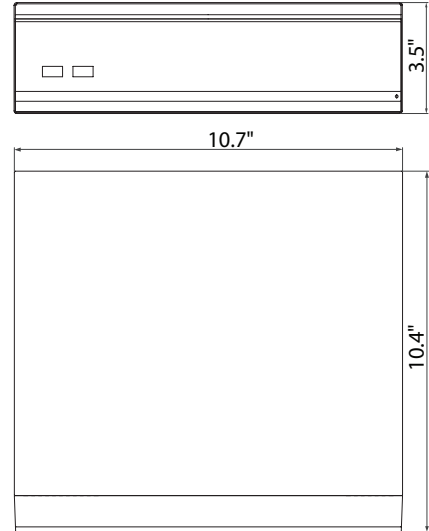
NVR4P

IP PRODUCT SERIES

SPECIFICATIONS

MODEL	NVR4P	
VIDEO	IP Camera Input	4
	Supported Video Format	H.264, MPEG-4, MJPEG
	Recording Video Resolution	320x240 ~ 2048 x 1536
	Recording Mode	Continuous, Schedule, Event, Network
	Recording Frame/Sec (FPS)	Max. 120fps @ 1920 x 1080; 80fps @ 2048 x 1536
	Search Mode	Calendar, Time, Event, Protect, Capture
	Video Monitor Output	HDMI, VGA
	Monitor Resolution	1080p maximum
	Monitor Screen Modes	Full, Quad, PIP, Zoom
	NETWORK	Remote Mobile Support
Supported Protocol		TCP/IP, IPv4, HTTP, uPnP, DHCP, Zeroconfig, ONVIF v2.2 (Profile S)
Remote Access		ATVision IP Remote Management Software, Web Browser, Smart Manager
Web Browsers		IE, Chrome, Firefox
No. of simultaneous users		10
Remote Monitoring/Control		NAT Transversal and E-Map support
GENERAL	Internal HDD	Up to 2 SATA HDD's: 6TB Total Capacity
	External HDD	Via 1 eSATA port : 24TB Total Capacity
	Audio (In/Out)	4 (Ethernet) / 1 (RCA)
	Alarm	Terminal TTL 4 Input, Terminal TTL 4 Output
	RS232	Serial (9-Pin D-Sub)
	Ethernet	100/1000 Base-T (Gigabit)
	Ethernet PoE Switch	IEEE 802.3at
	Ethernet Ports	4 x RJ45 PoE Camera Ports; 1 x RJ45 Non-PoE "IP CAM" Port; 1 x RJ45 Network Port
	HDMI Monitor Output	(Type A)
	VGA Monitor Output	(15-Pin D-Sub)
	RS485 Output	Terminal
	USB	2 x USB2.0
	eSATA	1 e-SATA port
	Power Source	48VAC (Power module included)
	Power Consumption	Max. 120W (2.5A) (w/ four PoE cameras); 70W (w/ zero PoE cameras)
	Operating Temperature	0°C ~ +45°C (+32°F ~ +114°F)
Humidity	0%RH ~ 90%RH	
Dimension (W x H x D)	11.1 x 10.3 x 3.2in (280 x 260 x 80mm)	
Weight	5.5lbs (2.5kg) (without HDD)	
Conformity Certifications	FCC, CE	

DIMENSIONS

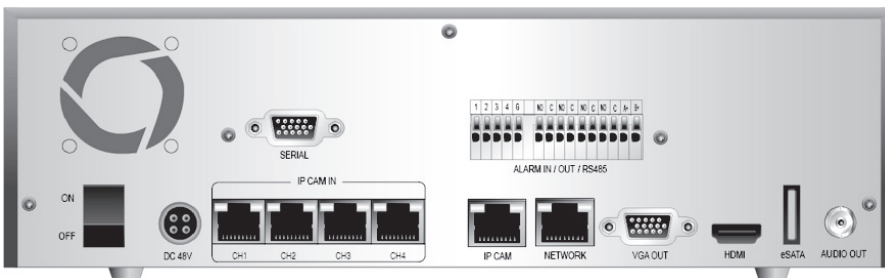


ATVision IP Remote Management Software

ACCESSORIES

LB3S
Digital Video eSATA External Storage Devices

Recorder Lockbox
See eSATA External Storage Category



Minimum System Requirements for ATVision IP Software

- Operating System: Microsoft Windows 7 (or 8) Professional/Enterprise/Ultimate
- CPU: Intel Core i7; RAM: 4GB; Ethernet connection: 1Gbps
- Graphics card: Gaming rated, with 1GB at 1080p for single monitor; 2GB at 1080p for multiple monitors
- HDD's: 7200RPM and 64MB cache; 1 separate HDD for operating system and software; and 1 (2TB) HDD for recording (refer to IP storage calculator)