

ALLPLEX Access Easy Master Controller

APC-AEMC-SVR



BOSCH

en Quick Installation Guide

Table of Contents

1	Copyright Notice	4
<hr/>		
2	Safety and Warranty	5
2.1	Important safety notes	5
2.2	FCC information	6
2.3	Safety precautions	6
<hr/>		
3	System Overview	7
3.1	Features	7
3.2	Specifications	7
3.2.1	System specifications	7
3.2.2	Environment condition specifications	7
3.3	General system information	8
<hr/>		
4	Installation of ALLPLEX AEMC	9
4.1	Connecting the cables and powering up the panel	9
4.2	Default settings of the panel	10
4.2.1	Retrieving configured IP settings of the panel	10

1 Copyright Notice

All rights reserved. No part of this manual may be reproduced, stored in a retrieval system, or transmitted in any form or by any means, electronic, mechanical, photocopying, recording, or otherwise, without the prior written permission of BOSCH SECURITY SYSTEMS.

This manual is provided pursuant to a license agreement containing restrictions on their use. The manual contains valuable trade secrets and proprietary information of BOSCH SECURITY SYSTEMS and is protected by international copyright law. It may not be copied or distributed to third parties, or used in any manner not provided for in the said license agreement.

All software is provided "AS IS." The sole obligation of BOSCH SECURITY SYSTEMS shall be to make available all published modifications that correct program problems are published within one (1) year from the date of shipment.

The software is intended for use only with the hardware specified in this manual and in the absence of other software. Concurrent use with other software or with hardware not specified may cause the program to function improperly or not at all. BOSCH SECURITY SYSTEMS may not provide support for systems operating under such conditions.

All efforts have been made to ensure the accuracy of the contents of this manual. The above notwithstanding, BOSCH SECURITY SYSTEMS assume no responsibility for any errors in this manual or their consequences.

The information on this document is subject to change without notice.

Other product and company names mentioned herein may be the trademarks of their respective owners.

2 Safety and Warranty

2.1 Important safety notes

1. **Read, Follow, and Retain Instructions** – All safety and operating instructions must be read and followed properly before putting the unit into operation. Retain instructions for future reference.
2. **Consider all Warnings** – Adhere to all warnings on the unit and in the operating instructions.
3. **Accessories** – Use only accessories recommended by the manufacturer or those sold with the product. Accessories not recommended by the manufacturer shall not be used, as they may cause hazards.
4. **Installation Precautions** – Do not place this unit on an unstable stand, tripod, bracket, or mount. The unit may fall, causing serious injury to persons and damage to the unit. Mount the unit according to the manufacturer's instructions.
5. **Service** – Do not attempt to service this unit by yourself. Opening or removing covers may expose you to dangerous voltages or other hazards. Refer all servicing to qualified service personnel.
6. **Damage Requiring Service** – Disconnect the unit from the main AC or DC power source and refer servicing to qualified service personnel under the following conditions:
 - When the power supply cord or plug is damaged.
 - If liquid has been spilled or an object has fallen into the unit.
 - If the unit has been exposed to water and/or inclement weather (rain, snow, etc.).
 - If the unit does not operate normally, when following the operating instructions. Adjust only those controls specified in the operating instructions. Improper adjustment of other controls may result in damage, and require extensive work by a qualified technician to restore the unit to normal operation.
 - If the unit has been dropped or the cabinet damaged.
 - If the unit exhibits a distinct change in performance, this indicates that service is needed.
7. **Replacement Parts** – When replacement parts are required, the service technician shall use replacement parts that are specified by the manufacturer. Unauthorized substitutions may result in fire, electrical shock or other hazards.
8. **Safety Check** – Upon completion of service or repair work on the unit, ask the service technician to perform safety checks to ensure that the unit operates properly.
9. **Power Sources** – Operate the unit only from the type of power source indicated on the label. If unsure of the type of power supply to use, contact your dealer.
 - For units intended to operate from battery power, refer to the operating instructions.
 - For units intended to operate with External Power Supplies, use only the recommended approved power supplies.
10. **Lightning** – For added protection during a lightning storm, or when this unit is left unused for long periods of time, disconnect the unit from power. This will prevent damage to the unit due to lightning and excessive power line surges.
11. **Restricted Access Locations** are required for the installation.
12. **DO NOT LEAVE THIS EQUIPMENT IN AN ENVIRONMENT WHERE THE STORAGE TEMPERATURE IS BELOW -20°C (-4°F) OR ABOVE 65°C (149°F). IT MAY DAMAGE THE EQUIPMENT.**

2.2 FCC information

**NOTICE!**

This device complies with Part 15 FCC Rules. Operation is subject to the following two conditions: (1) this device may not cause harmful interference, and (2) this device must accept any interference received including interference that may cause undesired operation.

2.3 Safety precautions

**CAUTION!**

There is a danger of explosion if the battery is incorrectly replaced. Replace only with the same or equivalent type recommended by the manufacturer. Dispose of used batteries according to the manufacturer's instructions and your local government's recycling or disposal directives.

3 System Overview

The ALLPLEX Access Easy Master Controller (ALLPLEX AEMC) uses the Intel® processor, and is equipped with a 16 GB solid-state drive. The condensed appearance of ALLPLEX AEMC, featuring desktop and rackmount form factor, fits nicely into space-limited environments. In addition, it also features two RJ45 10/100/1000BASE-TX Ethernet ports.

3.1 Features

Key features of the ALLPLEX AEMC include:

1. 1U 19" Rackmount, fanless design
2. 16 GB solid-state drive (SSD)
3. Two RJ45 10/100/1000BASE-TX Ethernet ports

3.2 Specifications

Key specifications of the ALLPLEX AEMC are described in the following sections.

3.2.1 System specifications

Form Factor	1U 19" Rackmount, fanless design
Processor	Intel® processor
Ethernet	Two RJ45 10/100/1000BASE-TX ports
Storage	16 GB solid-state drive (SSD)
LED	One PWR LED One HDD LED
Power Supply	+12V DC-in adapter
Dimension (W x D x H)	430 mm x 300 mm x 44 mm (16.9 in x 11.8 in x 1.7 in)

3.2.2 Environment condition specifications

Temperature (Operating)	0°C to 40°C (32°F to 104°F)
Temperature (Storage)	-20°C to 80°C (-4°F to 176°F)
Humidity (Operating)	10% RH to 90% RH
Humidity (Storage)	95% @ 40°C, non-condensing
Vibration	0.5G / 5 Hz to 500 Hz
Shock	15G with 11m/sec

3.3 General system information

Front panel



Figure 3.1 Front view of the panel

Number	Part
1	Hard Disk Drive LED
2	Power LED

Rear panel



Figure 3.2 Rear view of the panel

Number	Key Components
1	Power switch
2	DC-in jack
3	RJ45 10/100/1000BASE-TX Ethernet port

4 Installation of ALLPLEX AEMC

The ALLPLEX AEMC is based on a rackmount design. A rackmount bracket kit is included with the panel. The rackmount brackets can be installed at the front or rear sides of the panel.

To aid the handling of the panel, the rack handles can be affixed to the brackets. The panel can then be mounted on the rack. Before proceeding with installation, consider and decide the type of rack you would be using, and the orientation of the mount (front or rear mounted).



Figure 4.1 Rackmount brackets and handles installed on the panel

4.1 Connecting the cables and powering up the panel

Once the ALLPLEX AEMC has been mounted on the rack, follow the instructions below to establish the ALLPLEX AEMC on the customer's network.

1. Connect a network cable from the RJ45 port nearest to the power switch (item 3 of *Figure 3.2*) on the panel to the customer's network hub.



NOTICE!

Use the RJ45 port nearest to the power switch as shown in *Figure 3.2*. Do not use the other RJ45 port.

2. Connect the power adapter from the DC-in jack (item 2 of *Figure 3.2*) on the panel to the electrical outlet.
3. Turn on the electrical outlet.
4. Set the power switch of the panel on (item 1 of *Figure 3.2*).

Once ALLPLEX AEMC is powered, the PWR LED (item 2 of *Figure 3.1*) should be lighted up.

4.2 Default settings of the panel

The ALLPLEX AEMC comes preconfigured with default settings. Once the panel is powered up, these settings come into effect. The default IP settings for the panel are as follows:

Setting	Value
IP Address	129.2.0.42
Subnet Mask	255.255.0.0
Gateway	0.0.0.0

Table 4.1 Default IP Settings for ALLPLEX AEMC

If the customer uses their own network address settings, the IP settings for ALLPLEX AEMC can be changed by logging into ALLPLEX AEMC using the default master User ID. The default master User ID and Password are as follows:

User ID	Password
iuser1	8088

Table 4.2 Default master User ID and Password for ALLPLEX AEMC

This default master User ID is usually assigned to the network's System Administrator. The access rights of this User ID cannot be disabled. However, the User ID and Password can be changed from ALLPLEX AEMC.



WARNING!

Do not forget any changes made to the default master User ID and/or Password. If you don't remember them, the information cannot be retrieved on-site. You will need to send the ALLPLEX AEMC to the Bosch Service Center.

After logging in, change the IP settings accordingly, and reboot the ALLPLEX AEMC. Once rebooted, ALLPLEX AEMC will respond to its new IP address.

For further information on changing the default software configuration, please refer to the ALLPLEX AEMC Software Manual.

4.2.1 Retrieving configured IP settings of the panel

If changes were made to the IP settings of the ALLPLEX AEMC but you cannot remember the details, use the **IP Setup** program to retrieve them on-site.



NOTICE!

The **IP Setup** program can be installed from the Utility CD included with the ALLPLEX AEMC. Please refer to *Section 5.1 Running IP Setup* of the Utilities Program Manual.

Follow the instructions below on using **IP Setup** to retrieve the configured IP settings.

1. Double-click the **IPSetup** icon to launch the **IP Setup** program.
2. Click **Start** menu item, or the **Start** button from the right pane to start scanning the controllers for their IP settings.

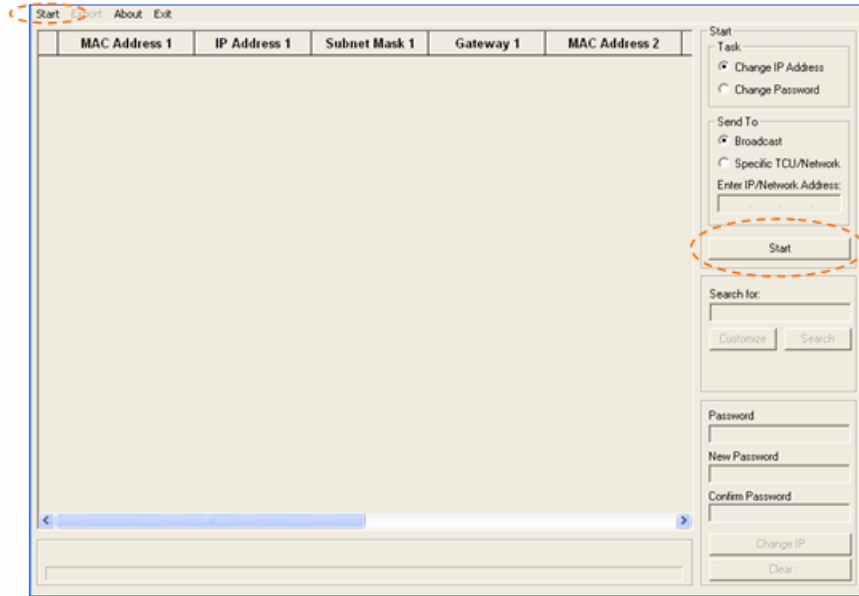


Figure 4.2 Interface of IP Setup program



NOTICE!

IP Setup will only find controllers in the same network segment as the PC. For example, if the IP address of the PC is 129.2.0.1 with subnetmask 255.255.0.0, **IP Setup** only scans for controllers with the IP address ranging from 129.2.0.1 to 129.255.255.

3. **IP Setup** begins to scan for controllers within the network.

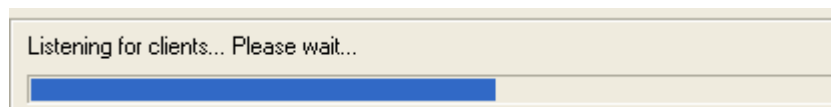


Figure 4.3 IP Setup starts scanning

4. Results of the scan are displayed in the window.

	MAC Address 1	IP Address 1	Subnet Mask 1	Gateway 1	MAC Ad
<input type="checkbox"/>	00-04-5F-80-36-AC	129.3.0.32	255.255.255.0	129.3.0.254	00-04-5F-80-

Figure 4.4 Results of the scan

5. Using the MAC address information from the label on the ALLPLEX AEMC, match the MAC address from the scan results to find the corresponding IP address.

For more information on other functionalities of **IP Setup**, please refer to *Section 5 Using IP Setup* of the Utilities Program Manual.

Robert Bosch (SEA) Pte Ltd

11 Bishan Street 21

573943 Singapore

Singapore

www.boschsecurity.com

© Robert Bosch (SEA) Pte Ltd, 2011