

**Alarm Controls**  
**Product Guide**

2019

Access. Value. Today.

# ABOUT ALARM CONTROLS

## About

Founded in 1971, Alarm Controls offers a complete line of affordable access control products and accessories to secure and control commercial door openings at an exceptional value. Our robust product lines provide a wide variety of options, to fit any need or job.

Today, backed by the strength of ASSA ABLOY, the global leader in door opening solutions, Alarm Controls continues to grow while maintaining the high level of customer service, quality and short lead times that our customers have grown accustomed to over the years.

We also remain committed to custom solutions and as always -

**If you need it, we will make it!**

## Customer Support

We're here to help and you can contact us in the following ways:

- Call us at 800.645.5583 to talk to a Customer Support representative from 9:00 a.m. to 6:00 p.m. EST
- Email us at [customersupport.alarmcontrols@assaabloy.com](mailto:customersupport.alarmcontrols@assaabloy.com)
- Visit [www.alarmcontrols.com](http://www.alarmcontrols.com) to learn more about our products and services or to live chat with a representative

**On behalf of everyone in the Alarm Controls family,  
thank you for choosing our products.**

# FEATURED PRODUCTS

## Electric Strikes



### Model AES-100

- Compatible with Cylindrical Locksets, Mortise Locksets / Mortise Exit Device without deadbolts
- ANSI/BHMA A156.31 Grade 1
- Ideal for high traffic access points



### Model AES-200

- Compatible with Cylindrical Locksets
- ANSI/BHMA A156.2 Grade 2
- Ideal for high security applications where latchbolt monitoring is required



### Model AES-300

- Compatible with Cylindrical Locksets
- ANSI/BHMA A156.2 Grade 2
- Ideal for high security applications where there is a space-constrained application required and a standard strike will not fit

See page 20 for more information

## Remote Wireless Transmitters



### Model RT-1 & RT-3 Kits

- Transmitters can be mounted on walls or under desks with included holders
  - RT-1 Kit includes one channel receiver and two transmitters
  - RT-3 Kit includes three channel receivers and one transmitter
- See page 7 for more information

# MAGNETIC LOCKS

Limited Lifetime Warranty

## MODEL 300S 300 lbs Single Lock



- 300 lbs maximum holding force
- Magnet size: 6-11/16" L x 1-1/2" H x 7/16" W
- 12 or 24VDC switch selectable
- Ideal for cabinets and showcases

## MODEL 600S 600 lbs Single Lock



- 600 lbs maximum holding force
- Magnet size: 9-7/8" L x 1-11/16" H x 1" W
- UL 10C, UL 294, ULC-S104 (Canada) listed
- 12 or 24VDC switch selectable

## MODEL 600D 600 lbs Double Lock



- 600 lbs maximum holding force per lock
- Magnet size: 19-3/4" L x 1-7/8" H x 1" W
- UL 10C, UL 294, ULC-S104 (Canada) listed
- 12 or 24VDC switch selectable

## MODEL 600L 600 lbs Single Lock with Red Status LED



- 600 lbs maximum holding force
- Magnet size: 9-7/8" L x 1-11/16" H x 1" W
- 12 or 24VDC switch selectable

## MODEL 600LB 600 lbs Single Lock with Bond Sensor, Door Status Sensor and Bi-Color LED



- 600 lbs maximum holding force
- Magnet size: 9-7/8" L x 1-11/16" H x 1" W
- UL 10C, UL 294, ULC-S104 (Canada) listed
- SPDT 3A relay contact rating
- 12 or 24VDC switch selectable

## MODEL 1200S 1200 lbs Single Lock



- 1200 lbs maximum holding force
- Magnet size: 10-1/2" L x 2-7/8" H x 1-1/2" W
- UL 10C, UL 294, ULC-S104 (Canada) listed
- 12 or 24VDC switch selectable

## MODEL 1200D 1200 lbs Double Lock with Bond Sensor, Door Status Sensor and Bi-Color LED



- 1200 lbs maximum holding force per lock
- Magnet size: 21" L x 2-7/8" H x 1-1/2" W
- UL 10C, UL 294, ULC-S104 (Canada) listed
- SPDT 3A relay contact rating
- 12 or 24VDC switch selectable

## MODEL 1200L 1200 lbs Single Lock with Red Status LED



- UL and ULC Listed
- 1200 lbs maximum holding force
- Magnet size: 10-1/2" L x 2-7/8" H x 1-1/2" W
- UL 10C, UL 294, ULC-S104 (Canada) listed
- 12 or 24VDC switch selectable

## MODEL 1200LB 1200 lbs Single Lock with Bond Sensor, Door Status Sensor and Bi-Color LED



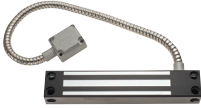
- 1200 lbs maximum holding force
- Magnet size: 10-1/2" L x 2-7/8" H x 1-1/2" W
- UL 10C, UL 294, ULC-S104 (Canada) listed
- SPDT 3A relay contact
- 12 or 24VDC switch selectable

# MAGNETIC LOCKS AND ACCESSORIES

Limited Lifetime Warranty

## MODEL 600WP

### 600 lbs Weatherproof Gate Lock



- 600 lbs maximum holding force
- Magnet size: 8-5/8" L x 1-5/8" H x 1"W
- 3/8" I.D. Stainless Steel jacket protects cable
- 12 or 24 VDC, selectable

## MODEL 1200WP

### 1200 lbs Weatherproof Gate Lock



- 1200 lbs maximum holding force
- Magnet size: 9" L x 2-5/8" H x 1-5/8" W
- 12 or 24VDC
- Fitted with 1/2" I.D. and 3/4" O.D. NPT fittings
- 10" colored leads in plastic jacket
- Sealed in stainless steel case

## ARMORED DOOR LOOPS



### Model DL-1

- 1/4" I.D. stainless steel 18" jacket
- White & brown plastic end caps

### Model DL-2

- 3/8" I.D. stainless steel 18" jacket
- Die cast end caps
- **DL-2ELECTRO** available with Electrolynx connectors

## MODEL LNB-6

### Lock N' A Box



- One 600S magnetic lock
- One TS-2 Request to exit station
- One KP-100 backlit digital keypad
- One 24VDC power supply
- Recommended for interior doors

## MODEL LNB-12

### Lock N' A Box



- One 1200S, magnetic lock
- One TS-2 Request to exit station
- One KP-400 weatherproof digital keypad
- One 24VDC power supply
- Recommended for exterior doors

## MODEL DJ-1

### Magnetic Lock Drill Jig



- Designed for fast and accurate magnetic lock installations
- Use for 600 and 1200 Series single locks
- Jig has temporary mounting holes for hands-free use

## MODEL JN-1

### Jacknut Tool Kit



- Provides a reliable and secure method for securing locks to a metal door frame
- Includes 25/64" drill bit and five mandrel sizes
- **JN-50** contains 50 jack nuts and screws

## MODEL GDH

### Glass Door Holder



- Mounts armature plate on frameless glass doors
- Accommodates 600 and 1200 Series magnetic lock armature plates

## MAGNETIC LOCK

### Armature Housings and Mounting Plates



AM3310/AM6310



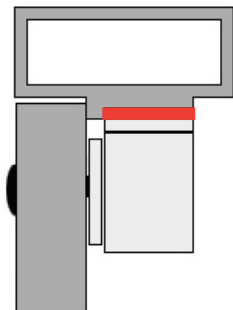
AM3315

- For use on extra thick doors or on glass doors with frames
- **AM3310** for 600 Series locks
- **AM6310** for 1200 Series locks
- **AM3315** for 600 and 1200 Series locks

# MAGNETIC LOCK MOUNTING BRACKETS

Add **DURO** to the end of any magnetic lock mounting bracket listed on this page for Duranodic finish.

## DROP DOWN PLATES Lowers Magnetic Locks by 1/4" to 5/8"



## DROP DOWN PLATES for Single Locks



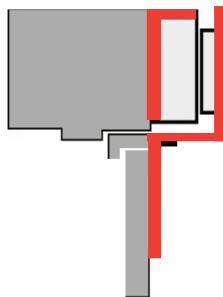
- **AM3300** 1/2" plate for 600 lbs lock
- **AM3305** 5/8" plate for 600 lbs lock
- **AM3330** 1/4" plate for 600 lbs lock
- **AM6300** 1/2" plate for 1200 lbs lock
- **AM6305** 5/8" plate for 1200 lbs lock
- **AM6330** 1/4" plate for 1200 lbs lock

## DROP DOWN PLATES for Double Locks



- **AM3331** 1/4" plate for 600 lbs lock
- **AM3332** 1/2" plate for 600 lbs lock
- **AM3334** 5/8" plate for 600 lbs lock
- **AM6331** 1/4" plate for 1200 lbs lock
- **AM6332** 1/2" plate for 1200 lbs lock
- **AM6334** 5/8" plate for 1200 lbs lock

## Z BRACKETS Use on In-Swinging Doors



## Z BRACKETS for Magnetic Locks



- **AM2370** for 300 lbs single lock
- **AM3370** for all 600 lbs single locks
- **AM3375** for all 600 lbs double locks
- **AM6370** for all 1200 lbs single locks
- **AM6375** for all 1200 lbs double locks

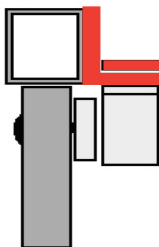
## Z BRACKETS WITH INTEGRATED DRESS COVER



- **AM3370C** for 600 lbs single magnetic locks
- **AM6370C** for 1200 lbs single magnetic locks
- For use on in-swinging doors

## ANGLE BRACKETS Use to Extend Door Header Adjustable Single Lock Brackets

- **AM3325** for 600 Series
- **AM6325** for 1200 Series



## ANGLE BRACKETS for Magnetic Locks



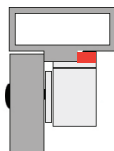
- **AM3320** for 600 Series single locks 1" x 1-1/2" x 9-7/8"
- **AM3326** for 600 Series double locks 1" x 1-1/2" x 19"
- **AM6320** for 1200 Series single locks 1" x 1-1/2" x 10-1/2"
- **AM6326** for 1200 Series double locks 1" x 1-1/2" x 21"

## FILLER PLATES for Magnetic Locks



Use to widen door stop. Use two for double locks.

- **AM6360** Filler Plate 10-1/2" L x 3/4" W x 5/8" H
- **AM6361** Filler Plate 10-1/2" L x 3/4" W x 1/2" H



# MAGNETIC LOCK MOUNTING BRACKETS

## SPLIT ARMATURES for Single Maglocks



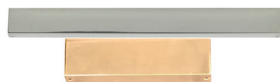
- **AM3339** converts a 600 Series single magnetic lock for use on a double door
- **AM6339** converts a 1200 Series single magnetic lock for use on a double door

## OFFSET ARMATURE PLATES



- Sex bolt is offset 1/2"
- Use to clear glass on aluminum frame doors
- Use **AM3338** with 600 Series single and double magnetic locks
- Use **AM6338** with 1200 Series single and double magnetic locks

## DRESS COVERS for Magnetic Locks



- Available for both 600 and 1200 Series magnetic locks
- Available in polished chrome and brass
- Easy to install and retrofit existing installations
- See website for full list of available part numbers

# WIRELESS TRANSMITTERS AND RECEIVERS

*Limited Lifetime Warranty*

## MODELS RT-1 AND RT-3



- RT-1 Kit includes one channel receiver and two transmitters with mount and keychain
- RT-3 Kit includes three channel receivers, one transmitter with mount and keychain
- Transmitter mounts allows for mounting under a desk or on a wall
- 12" antenna allows for up to 300' of range
- Rolling code with more than one billion code combinations
- Latching option allows you to keep doors unlocked until you press the button again
- Receiver can be controlled by up to thirty transmitters and has a five second momentary output
- Additional transmitter (**RT-1T**), transmitter with two wire leads (**RT-1TW**), and extra three channel receiver (**RT-3R**) available

# REQUEST TO EXIT STATIONS

## Limited Lifetime Warranty

Add **-2** to TS-1, TS-2, TS-3, TS-4, TS-5 to for additional SPDT output. Add **T** to TS models for 2 to 45 second adjustable timed SPDT output. Custom language and plate finish options available. Contact factory for more details.

### MODEL TS-1



- 1-1/2" diameter button
- Momentary switch
- One N/O and one N/C contact
- Contacts rated 10A
- Red and green LED's
- Works on 12 or 24VDC

### MODEL TS-2



- 2" square illuminated button
- SPDT momentary switch
- Contacts rated 1A @ 35VDC
- UL 294 listed
- Operates on 12 or 24VDC
- 1-1/2" mounting depth

### MODEL TS-2T



- Same specifications as **TS-2**
- Contacts rated 1A @ 35VDC
- 2 to 45 second adjustable timed SPDT output
- UL 294 listed
- Operates on 12 or 24VDC
- 1-1/2" mounting depth

### MODEL TS-3



- 2" square illuminated button and 1/2" red LED
- SPDT momentary switch
- Contacts rated 1A @ 35VDC
- UL 294 listed
- Operates on 12 or 24VDC
- 1-1/2" mounting depth

### MODEL TS-4



- 2" square illuminated button
- SPDT momentary switch
- Contacts rated 1A @ 35VDC
- UL 294 listed
- Operates on 12 or 24VDC
- 1-1/2" mounting depth

### MODEL TS-5



- 2" square illuminated button and 1/2" red LED
- SPDT momentary switch
- Contacts rated 1A @ 35VDC
- UL 294 listed
- Operates on 12 or 24VDC
- 1-1/2" mounting depth

### MODEL TS-6



- 5/8" x 7/8" illuminated button and 1/4" red and green LEDs
- DPDT momentary switch
- Rated 2A @ 12-28 VDC
- UL 294 listed
- Operates on 12 or 24VDC

### MODEL TS-7



- 5/8" x 7/8" illuminated button
- DPDT momentary switch
- Rated 2A @ 12-28 VDC
- UL 294 listed
- Operates on 12 or 24VDC

### MODEL TS-9



- 5/8" x 7/8" green rectangular push button
- DPDT momentary switch
- Rated 3A @ 35VDC
- UL 294 listed
- Operates on 12 or 24VDC
- 1-3/4" wide stainless steel plate



# VANDAL RESISTANT REQUEST TO EXIT STATIONS

Limited Lifetime Warranty

## MODEL TS-10



- 3/4" diameter pushbutton
- Momentary switch
- DPDT contacts rated 2A @ 12-28 VDC
- Red and green LEDs
- Operates on 12 or 24VDC

## MODEL TS-11



- 3/4" diameter pushbutton
- Momentary switch
- DPDT contacts rated 2A @ 12-28 VDC
- Red and green LEDs
- Operates on 12 or 24VDC
- 1-3/4" wide stainless steel plate

## MODEL TS-12



- 3/4" diameter pushbutton
- Momentary switch
- DPDT contacts rated 2A @ 12-28 VDC
- Available in weatherproof solution **TS-12302**

Models listed above have a switch depth of 1-1/2", meet IP65 standard and are UL 294 listed. Add T to TS models for 2 to 45 second adjustable timed SPDT output.

# PNEUMATIC TIME DELAY EXIT RELEASE STATIONS

Limited Lifetime Warranty

## MODEL TS-14



- 1-1/2" round green mushroom button
- N/O and N/C contacts rated 2A @ 12-28 VDC
- Time range 2-60 seconds
- UL 294 listed
- Available in weatherproof solution **TS-14302**

## MODEL TS-14N



- 1-1/2" round green mushroom button
- N/O and N/C contacts rated 2A @ 12-28 VDC
- Time range 2-60 seconds
- UL 294 listed
- 1-3/4" wide stainless steel plate

## MODEL TS-15



- 0.25" diameter button with guard ring
- N/O and N/C contacts rated 2A @ 12-28 VDC
- Time range 2-60 seconds
- UL 294 listed
- 1-3/4" wide stainless steel plate

## MODEL TS-16



- 1/4" diameter button with guard ring
- N/O and N/C contacts rated 2A @ 12-28 VDC
- Time range 2-60 seconds
- UL 294 listed

## MODEL TS-21RPN



- 2-1/2" round red mushroom button
- N/O and N/C contacts rated 2A @ 12-28 VDC
- Time range 2-60 seconds
- UL 294 listed

## MODEL TS-60



- 2-1/2" round red mushroom button
- N/O and N/C contacts rated 2A @ 12-28 VDC
- Time range 2-60 seconds
- UL 294 listed

# WEATHERPROOF SOLUTIONS

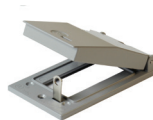
Limited Lifetime Warranty

## MODEL WP-4



- Remote station with a hinged self-closing cover
- 1/4" red and green LEDs operate on 12 or 24 VDC
- LED current draw 8mA at 12 VDC, 12mA at 24 VDC
- 6" red and black leads
- 3/4" "D" hole for Ace lock

## MODEL WPC



- Hinged self-closing cover
- Die cast metal construction
- Hasp allows secure closure with a small padlock
- Mounts on Model 30203 back box

## MODEL 30203



- Die cast zinc painted gray
- Three 0.5" hold plugs
- O.D.: 4-1/2" L x 2-3/4" W x 2" D
- I.D.: 4-5/6" L x 2-9/16" W x 1-7/8" D

## MODEL EB-1-1



- 1-1/2" red mushroom button
- N/O and N/C contacts rated 10A @ 35VDC
- Contacts rated 10A @ 35VDC
- Meets IP65 standards
- Labeled "EXIT" momentary action switch
- UL 294 listed

# REQUEST TO EXIT PUSHBAR

Limited Lifetime Warranty

## MODELS REB-1 AND REB-3



- REB-1 measures 34-1/2" in length
- REB-3 measures 48" in length
- Low profile design, 2-1/2" wide x 2" high
- Four SPDT switches for positive redundant operation
- 18" armored door loop included with changeable white and brown end caps
- Low operating force, minimal bar travel
- Field reversible and easily installed on all types of doors
- Heavy duty clear anodized satin aluminum construction
- Available in Duranodic finish, part number **REB-1DURO** or **REB-3DURO**

# MORTISE MAGNETIC LOCK

Limited Lifetime Warranty

## MODEL 600ML



- Up to 600lbs holding force
- Mortise mounted
- Field selectable 12/24VDC
- Built-in spike or surge suppression
- Mounts fully to conceal into wood, steel or aluminum doors
- Ideal for sliding doors
- Available with lock status sensor **600MLS**

# DROP BOLT LOCK

## MODEL DBL-1



- Works on glass or surface mounted
- Field Selectable 12/24VDC
- Current Draw: Pull-in 1A @ 12VDC  
Holding 0.3A @ 12VDC
- Auto-lock time delay (0, 2.5, 5 seconds)
- Fail-safe mode (lock engaged when powered)
- Built-in spike or surge suppression
- Square and round faceplates included
- Ideal for double swing doors
- Available with lock/door status sensor **DBL-1-LB**
- Wood (**DBB-1**), glass (**DBB-2**) and hollow metal (**DBB-3**) brackets available

*This product is not in full production. All specifications and listings are subject to change. Visit [www.AlarmControls.com](http://www.AlarmControls.com) for the most up to date information on new product launches.*

# ACTIVE FOCUSED INFRARED

Limited Lifetime Warranty

## MODEL SREX-100



- Motion sensing request to exit device
- UL 294 and ULC-S319 listed
- Narrow activation zone is limited to door handle area and eliminates cross traffic activation
- Sensor cannot be activated by placing objects under door
- Easy installation with adjustable depth zone
- Operates on 12/24VAC or VDC auto sensing
- Maximum current draw is 155mA with sounder off, 200mA with sounder on
- Temperature range for UL installations is +32°F to +120°F, (0°C to +49°C)
- DPDT contacts (2 form C)
- Relay contact rated 1.3A @ 30VDC or 24VAC
- Adjustable time delay from 1 to 60 seconds
- Built-in buzzer can be silenced, if required
- REX input, keypad or card reader input and door position switch input
- 14 pin female connector with four feet of cable

# TIMERS

Limited Lifetime Warranty

## MODEL MT-1

### One Shot Mini-Timer



- 12-24VAC or VDC
- Current draw: 37mA
- SPDT contact
- Contact rating: 2A @ 35VDC/125VAC
- 2-45 second time setting
- One shot relay operating mode
- -25°C to +70°C temperature rating
- Connections made with 8" colored leads
- Foam tape mounting
- Size: 1-3/4" x 1-3/4"
- Fail Safe operation available **MT-1F**

In fail safe operation relay is energized when power is applied. During timing mode relay is not energized.

## MODEL T-7P

### Precision Digital Timer



- 12-24VAC or VDC voltage range
- Current: 8mA idle; 40mA relay energized
- Contacts: SPDT
- Contact rating: 10A @ 35VDC
- Latching or momentary modes
- Relay adjustable from 1 second to 3 minutes
- 12 hour format; 24 hour format available
- Size: 4" W x 5-1/4" L

## MODEL UT-1

### Programmable Digital Timer



- Input voltage: 12VDC
- Current draw: 37mA maximum
- Time range: one second to one hour
- Contacts: SPDT
- Contact rating: 10A @ 35VDC
- Size: 2-1/8" W x 5-1/4" L
- Available in 24VDC operating voltage **UT-1/24**

# FOOT SWITCHES

## MODEL FT-1

## MODEL FT-2



FT-1



FT-2

- SPDT Contacts rated 10A @ 125VAC
- Foot switch connected to a 5-1/2 foot long cable
- 18 AWG stranded wire conductor
- UL and CSA listed
- Size: 2-3/4"W x 3-1/2"L x 1-1/4"D
- **FT-1**: Momentary action
- **FT-2**: Latching action

# EMERGENCY DOOR RELEASE

## MODEL GBS-1



- ABS 757 plastic construction
- SPDT switch rated 10 A @ 24VDC
- 3-1/2" x 3-1/2" x 2-1/2" Deep
- **GBS-1GLASS** replacement glass

# MONITORING/CONTROL STATIONS

Limited Lifetime Warranty

All SLP contacts rated 2A @ 12-28 VDC, operate on 12/24 VAC or VDC and offer illuminated switches terminated with 8" colored leads.

## MODEL SLP-1M

One Station



- 1 DPDT momentary contact
- 1 red LED
- Order **SLP-1L** for latching contacts

## MODEL SLP-2M

Two Station



- 2 DPDT momentary contacts
- 2 red LEDs
- Order **SLP-2L** for latching contacts

## MODEL SLP-3M

Three Station



- 3 DPDT momentary contacts
- 3 red LEDs
- Order **SLP-3L** for latching contacts

## MODEL SLP-4M

Four Station



- 4 DPDT momentary contacts
- 4 red LEDs
- Order **SLP-4L** for latching contacts

## MODEL SLP-5M

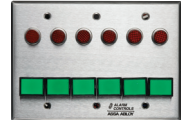
Five Station



- 5 DPDT momentary contacts
- 5 red LEDs
- Order **SLP-5L** for latching contacts

## MODEL SLP-6M

Six Station



- 6 DPDT momentary contacts
- 6 red LEDs
- Order **SLP-6L** for latching contacts

## MODEL SLP-7M

Seven Station



- 7 DPDT momentary contacts
- 7 red LEDs
- Order **SLP-7L** for latching contacts

## MODEL SLP-8M

Eight Station



- 8 DPDT momentary contacts
- 8 red LEDs
- Order **SLP-8L** for latching contacts

## MODEL TS-56R

Single Gang Station



- 1 N/O and 1 N/C latching contacts, 10A @ 35VDC
- 1-1/2" red LED illuminated push button
- Internal LED available in 12/24VDC
- Weatherproof rated to IP65, NEMA 4
- UL 294 listed
- **TS-56G** green mushroom push button

# MORTISE CYLINDER KEY SWITCH STATIONS

*Limited Lifetime Warranty – Mortise Cylinders Not Supplied*

All MCK Switch Station contacts rated 4A @ 28 VDC, offer illuminated switches terminated with 8" colored leads, and include tamperproof and slotted head screws.

## MODEL MCK-1



- 1-3/4" wide plate
- Depth behind plate 1.25"

## MODEL MCK-2



- 1-3/4" wide plate
- Green LED operates on 12/24VAC or VDC

## MODEL MCK-3



- 1-3/4" wide plate
- Green and red LEDs operate on 12/24VAC or VDC

## MODEL MCK-4



- Single gang plate
- Depth behind plate 1.25"

## MODEL MCK-5



- Single gang plate
- Green LED operates on 12/24VAC or VDC

## MODEL MCK-6



- Single gang plate
- Green and red LEDs operate on 12/24 VAC or VDC

## ADDITIONAL MODELS

- **MCK-1-2** SPDT, latching action
- **MCK-1-3** DPDT, momentary action
- **MCK-1-4** DPDT, latching action
- **MCK-2-2** SPDT, latching action
- **MCK-2-3** DPDT, momentary action
- **MCK-2-4** DPDT, latching action
- **MCK-3-2** SPDT, momentary action
- **MCK-3-3** DPDT, momentary action
- **MCK-3-4** DPDT, latching action
- **MCK-4-2** SPDT, latching action
- **MCK-4-3** DPDT, momentary action
- **MCK-4-4** DPDT, latching action
- **MCK-4-5** N/O and N/C pneumatic time delay
- **MCK-5-2** SPDT, latching action
- **MCK-5-3** DPDT, momentary action
- **MCK-5-4** DPDT, latching action
- **MCK-5-5** N/O and N/C pneumatic time delay
- **MCK-6-2** SPDT, latching action
- **MCK-6-3** DPDT, momentary action
- **MCK-6-4** DPDT, latching action
- **MCK-6-5** N/O and N/C pneumatic time delay
- Add suffix **WP** for weatherproof option. Available for **MCK-4**, **MCK-5** and **MCK-6** models only. Includes front cover and back box.

### *Mortise Cylinders Not Supplied*

- Model **CY-1** mortise cylinder, keyed different
- Model **CY-1A** mortise cylinder, keyed alike

# EGRESS/EMERGENCY/ PANIC STATIONS

Limited Lifetime Warranty

## MODEL EB-1 Egress Pushbutton



- 1-1/2" diameter red mushroom button
- Momentary switch
- Contacts rated 10A @ 35VDC or 120VAC
- One N/O and one N/C contact

## MODEL PBM-1 Momentary Pushbutton



- 1-1/2" diameter red mushroom button
- Momentary switch
- Contacts rated 10A @ 35VDC or 120VAC
- One N/O and one N/C contact

## MODEL PBL-1 Latching Pushbutton



- 1-1/2" diameter red mushroom button
- Latching switch
- Contacts rated 10A @ 35VDC or 120VAC
- One N/O and one N/C contact

## MODEL KR-1 Key Reset Pushbutton



- 1-1/2" diameter red mushroom button
- Locking key reset switch
- Contacts rated 10A @ 35VDC or 120VAC
- One N/O and one N/C contact

## MODEL TS-25 Emergency Door Release



Pressing the latching button will initiate the buzzer, light the switch and release the door. Pressing it again will lock the door and deactivate the light and buzzer.

- 2A @ 12-28 VDC
- 12/24VDC operation
- Available with 1-3/4" wide plate **TS-26**

## MODEL TS-32 Emergency Door Release



- 1-1/2" diameter red mushroom button
- Contacts rated 10A @ 35VDC or 120VAC
- One N/O and one N/C latching contacts
- Silkscreened with black epoxy ink

## MODEL TS-40 Egress Station



- Meets BOCA code for access controlled egress doors
- 2-60 second SPDT timed contacts, rated 2A
- SPDT momentary contacts, rated 10A

## MODEL TS-17 Key Controlled Door Release



- One N/O and one N/C contact, rated 10A @ 35VDC or 120VAC
- Black ABS plastic box with mounting ears
- UL 294 listed

## MODEL TS-18 Door Release



- SPDT momentary contacts, 4A @ 28VDC (**TS-18D** DPDT)
- Button protected with guard ring
- Black ABS plastic box with mounting ears
- UL 294 listed
- **TS-19** One N/O and one N/C momentary switch
- **TS-20** latching switch
- **TS-20D** DPDT switch

# VANDAL RESISTANT PUSH PLATES

Limited Lifetime Warranty

## MODEL PN1-111 Mullion Mount



- SPDT momentary contacts, 0.5A @ 125VDC
- Machined from 6061 solid aluminum
- **"PUSH TO EXIT"**
- Engraved legend
- Clear anodized with black fill
- Tamper resistant
- Size: 1-7/8" W x 4-1/2" L
- UL 294 listed

## MODEL PN2-443 Mullion Mount



- DPDT momentary contacts, 0.5A @ 125VDC
- Machined from 6061 solid aluminum
- **"ADA PUSH TO OPEN"**
- Engraved legend
- Blue anodized with white fill
- Tamper resistant
- Size: 1-7/8" W x 4-1/2" L
- UL 294 listed

## MODEL PN5-513 Mullion Mount



- Pneumatic time delay, N/O, N/C; rated 2A @ 12-28VDC
- Machined from 6061 solid aluminum
- **"PUSH TO EXIT"**
- Engraved legend
- Black anodized with white fill
- Tamper resistant
- Size: 1-7/8" W x 4-1/2" L
- UL 294 listed

## MODEL PT1-111 T Style



- SPDT momentary contacts, 0.5A @ 125VDC
- Machined from 6061 solid aluminum
- **"PUSH TO EXIT"**
- Engraved legend
- Clear anodized with black fill
- Mounts on Single Gang box
- Size: 3" W x 4-1/2" L
- UL 294 listed

## MODEL PT2-443 T Style



- DPDT momentary contacts, 0.5A @ 125VDC
- Machined from 6061 solid aluminum
- **"ADA PUSH TO OPEN"**
- Engraved legend
- Blue anodized with white fill
- Mounts on Single Gang box
- Size: 3" W x 4-1/2" L
- UL 294 listed

## MODEL PT5-152 T Style



- Pneumatic time delay, N/O, N/C; rated 2A @ 12-28VDC
- Machined from 6061 solid aluminum
- **"EMERGENCY DOOR RELEASE"**
- Clear anodized with red fill
- Mounts on Single Gang box
- Size: 3" W x 4-1/2" L
- UL 294 listed

## MODEL PS1-111 Single Gang Style



- SPDT momentary contacts, 0.5A @ 125VDC
- Machined from 6061 solid aluminum
- **"PUSH TO EXIT"**
- Engraved legend
- Clear anodized with black fill
- Mounts on Single Gang box
- Size: 3" W x 4-1/2" L
- UL 294 listed

## MODEL PS1-443 Single Gang Style



- DPDT momentary contacts, 0.5A @ 125VDC
- Machined from 6061 solid aluminum
- **"ADA PRESS TO OPEN"**
- Engraved legend
- Blue anodized with white fill
- Mounts on Single Gang box
- Size: 3" W x 4-1/2" L
- UL 294 listed

## MODEL PS5-152 Single Gang Style



- Pneumatic time delay, N/O, N/C; rated 2A @ 12-28VDC
- Machined from 6061 solid aluminum
- **"EMERGENCY DOOR RELEASE"**
- Clear anodized with red fill
- Mounts on Single Gang box
- Size: 3" W x 4-1/2" L
- UL 294 listed



# VANDAL RESISTANT PUSH PLATES

## MODEL PD1-111 Double Gang Push Plate



- SPDT momentary contacts
- Contacts rated 0.5A @ 125VDC
- Tamper and vandal resistant mounting
- Mounts on two gang electrical box
- Machined from 6061 solid aluminum with clear anodizing
- UL 294 listed

## MODEL PD2-121 Double Gang Push Plate



- DPDT momentary contacts
- Contacts rated 0.5A @ 125VDC
- Tamper and vandal resistant mounting
- Mounts on two gang electrical box
- Machined from 6061 solid aluminum with clear anodizing

## MODEL PD5-433 Double Gang Push Plate



- Pneumatic time delay, time range 2-60 seconds
- N/O, N/C contacts; Contacts rated 2A @ 12-28VDC
- Tamper and vandal resistant mounting
- Mounts on two gang box
- Machined from 6061 solid aluminum with blue anodizing

## HOW TO ORDER

Select a model and substitute the option number to obtain the required part number. For example, Single Gang, DPDT momentary contacts, bronze finish, **"PUSH TO OPEN"**, white fill. The part number is **PS2-233**.

## MODELS AND OPTIONS

### Narrow

PN1	SPDT momentary
PN2	DPDT momentary
PN5	Pneumatic time delay 2-60 seconds

### Tee-Style

PT1	SPDT momentary
PT2	DPDT momentary
PT5	Pneumatic time delay 2-60 seconds

### Single Gang

PS1	SPDT momentary
PS2	DPDT momentary
PS5	Pneumatic time delay 2-60 seconds

### Double Gang

PD1	SPDT momentary
PD2	DPDT momentary
PD5	Pneumatic time delay 2-60 seconds

### Switch Description

### Finish

- 1 Clear
- 2 Bronze
- 3 Brass
- 4 Blue
- 5 Black
- 6 Red

### Engraving

- 1 PUSH TO EXIT
- 2 PUSH TO OPERATE DOOR
- 3 PUSH TO OPEN
- 4 ADA PUSH TO OPEN
- 5 EMERGENCY DOOR  
RELEASE

### Fill

- 1 Black
- 2 Red
- 3 White
- 4 Blue

### Double Gang Engraving

- 1 PUSH TO EXIT
- 2 PUSH TO OPERATE DOOR
- 3 ADA PUSH TO OPEN

# JUMBO PUSH PLATE EXIT RELEASE STATIONS

Limited Lifetime Warranty

## MODEL JP1



- Large 5-1/2" square 302 stainless steel plate
- Mounts on two gang electrical box
- Vandal resistant
- **JP1-1** SPDT 0.5A @ 125VDC momentary contacts
- **JP1-2** DPDT 0.5A @ 125VDC momentary contacts
- **JP1-5** pneumatic time delay (2-60 seconds) N/O and N/C contact rated 2A @ 12-28VDC
- Custom silkscreening available

## MODEL JP2



- Large 5-1/2" square blue ADA push plate
- Mounts on two gang electrical box
- Vandal resistant
- **JP2-1** SPDT 0.5A @ 12-28 VDC momentary contacts
- **JP2-2** DPDT 0.5A @ 12-28 VDC momentary contacts
- **JP2-5** pneumatic time delay (2-60 seconds) N/O and N/C contact rated 2A @ 12-28VDC
- Custom silkscreening available

## MODEL JP3



- Large 5-1/2" square 302 stainless steel push plate
- Mounts on two gang electrical box
- Vandal resistant
- **JP3-1** SPDT 0.5A @ 12-28 VDC momentary contacts
- **JP3-2** DPDT 0.5A @ 12-28 VDC momentary contacts
- **JP3-5** pneumatic time delay (2-60 seconds) N/O and N/C contact rated 2A @ 12-28VDC
- Custom silkscreening available

# HAZARDOUS ENVIRONMENT SENSOR

## MODEL MREX



- UL Approved for Hazardous Locations
- Conforms to Class I, DIV I | Groups B, C, D
- Conforms to Class II, DIV I/II | Groups E, F, G
- Conforms to Class III
- 166 mA at 12 VDC / 83 mA at 24 VDC
- Operates on 12 to 24 VAC (+/- 10%) / 12 to 24 VDC (+30% / -10%)
- Microprocessed Microwave Motion Detector
- NEMA 4X Enclosure (IP66)
- Bidirectional, Unidirectional Approach and Unidirectional Microwave Detection
- Adjustable relay hold time (0.5 to 9 seconds)

*This product is not in full production. All specifications and listings are subject to change. Visit [www.AlarmControls.com](http://www.AlarmControls.com) for the most up to date information on new product launches.*

# HAZARDOUS ENVIRONMENT REQUEST TO EXIT STATIONS

*Limited Lifetime Warranty*

## MODEL EXP-1



- UL and ULC approved for hazardous locations
- Heavy cast NEMA type 7 enclosure
- Conforms to Class I, DIV. I and II, Group B, C, D, E, F and G
- 2" diameter pushbutton silkscreened with black epoxy ink
- One N/O and one N/C contact
- Contacts rated 5A @ 35VDC or 120VAC
- Pipe thread 1/2-14 NPT
- Push button can be customized

## MODEL EXP-15



### MODELS

- EXP-1 Momentary action switch, **"PUSH TO EXIT"**
- EXP-15 Momentary action switch, **"PANIC"**
- EXP-2 Latching action switch, **"PUSH TO EXIT"**
- EXP-25 Latching action switch, **"PANIC"**

# HAZARDOUS ENVIRONMENT MAGLOCKS

*Three-year Limited Warranty*

## MODEL 600EX/1200EX



- UL & ULC Approved for Hazardous Locations
- Conforms to Class I, Division II | Group A, B, C, D
- Instant release circuit – no residual magnetism
- Surface mounts easily with minimum of tools
- Fully sealed electronics using epoxy seal and conduit port for wiring to prevent electrical arcing
- Non-aluminium parts are plated to resist corrosion
- Low projection from header accommodates most door conditions without the need for filler plates or spread brackets
- Integrated Door Position Switch – standard
- Built-in spike or surge suppression

### MODELS

- **600EX** Out-swing door, push side mount with conduit on side-block
- **600EXZ** In-swing door, pull side mount with conduit on top, includes Z bracket for top jamb
- **1200EX** Out-swing door, push side mount with conduit on side-block
- **1200EXZ** In-swing door, pull side mount with conduit on top, includes Z bracket for top jamb

*This product is not in full production. All specifications and listings are subject to change. Visit [www.AlarmControls.com](http://www.AlarmControls.com) for the most up to date information on new product launches.*

# ELECTRIC STRIKES FOR MULTIPLE LOCKSETS

Limited Lifetime Warranty

## MODEL AES-100



### FEATURES

- For use with cylindrical locksets, mortise latch or mortise exit device
- Non-handed
- Field selectable, fail safe/fail secure
- Accepts locksets with a latch up to 3/4" throw without a deadbolt
- Includes strike body and faceplate kit 4-7/8" x 1-1/4" (1 square & 1 round corner) standard

### APPLICATIONS

- Hollow Metal or Aluminum Frames

### HOLDING FORCE

- 1,500 lbs (static strength)

### SPECIFICATIONS

- ANSI/BHMA Grade 1
- UL 1034 burglary-resistance
- Strike body depth 1-1/2"

### ELECTRICAL (CONTINUOUS DUTY)

- Dual voltage 12/24 VDC/VAC
- 130mA @ 12 VAC / 70mA @ 24 VAC
- 210mA @ 12 VDC / 105mA @ 24 VDC

### ACCESSORIES

- Additional faceplates available

## MODEL AES-200



### FEATURES

- For use with cylindrical locksets
- Non-handed - Horizontally adjustable
- Field selectable, fail safe/fail secure
- Accepts locksets with a latch up to 5/8" throw without a deadbolt
- Includes strike body and faceplate kit 4-7/8" x 1-1/4" (1 square & 1 round corner) standard

### APPLICATIONS

- Hollow Metal or Aluminum Frames

### HOLDING FORCE

- 1,000 lbs (static strength)

### SPECIFICATIONS

- ANSI/BHMA Grade 2
- UL 1034 burglary-resistance
- Strike body depth 1-1/2"

### ELECTRICAL (CONTINUOUS DUTY ON DC)

- Dual voltage 12/24 VDC/VAC
- 130mA @ 12 VAC / 70mA @ 24 VAC
- 200mA @ 12 VDC / 70mA @ 24 VDC

### ACCESSORIES

- Additional faceplates available

## MODEL AES-300



### FEATURES

- For use with cylindrical locksets
- Non-handed - Horizontally adjustable
- Accepts locksets with a latch up to 5/8" throw without a deadbolt

### APPLICATIONS

- Hollow Metal, Aluminum or Wood Frames

### HOLDING FORCE

- 1,000 lbs (static strength)
- 50 ft.-lbs (dynamic strength)

### SPECIFICATIONS

- ANSI/BHMA Grade 2
- UL 1034 burglary-resistance
- Strike body depth 1-1/2"

### ELECTRICAL

- Available in either 12V or 24V AC/DC
- 200mA @ 12V AC/DC
- 100mA @ 24V AC/DC

### ACCESSORIES

- Spacers and keeper shims for adjustability

Please see [www.alarmscontrols.com](http://www.alarmscontrols.com) for additional information and available solutions.

# SELF-CONTAINED DIGITAL KEYPADS

Three Year Warranty

## MODEL KP-100A

Surface or Flush Mount Indoor Keypad



- Programmable from the keypad
- Dual voltage 12/24 AC/DC
- Backlit hard plastic keys
- SPDT 5A contacts
- 100 user codes
- Code length from 4 to 8 digits
- Request to exit input
- Audible and visual key press
- 302 stainless steel wall plate
- Optional back box included for surface mounting
- LED status indicators
- False code lockout
- Keypad buzzer can be silenced

## MODEL KP-200

Flush Mount Weatherproof Keypad



- Programmable from the keypad
- Dual voltage 12/24 AC/DC
- Backlit metal keys
- SPDT 5A contacts
- Output 1: 100 user codes code length 4 to 8 digits
- Output 2: 10 user codes code length 4 to 8 digits
- Request to exit input, duress output
- Audible and visual key press
- Vandal resistant metal housing
- LED status indicators
- False code lockout
- Built-in buzzer and tamper switch

## MODEL KP-300

Mullion Mount Weather Proof Keypad with Built-in Card Reader



- Programmable from the keypad
- 12 VDC only
- Die cast zinc alloy housing
- Two programmable SPDT relays
- Operate with user code, card or code & card
- Output 1: 1000 user codes & cards
- Output 2: 100 user codes & cards
- Die cast, backlit, metal keys
- Vandal resistant metal housing
- LED status indicators
- 50 visitor codes, programmable for one time use or with time limit
- False code lockout
- Built-in buzzer and tamper switch
- **EM-10** package of 10 additional cards
- **EM-04** key fob

## MODEL KP-400

Surface Mount Weatherproof Keypad

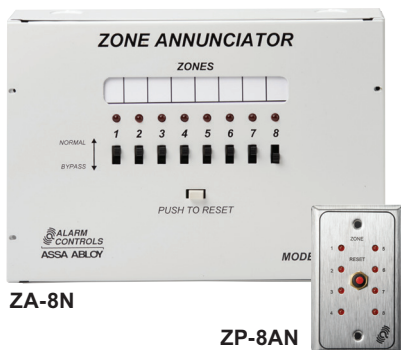


- Programmable from the keypad
- Dual voltage 12/24 AC/DC
- Backlit metal keys
- Two programmable relay outputs
- Output 1: 100 user codes code length 4 to 8 digits
- Output 2: 10 user codes code length 4 to 8 digits
- Request to exit input, duress output
- Audible and visual key press
- Die cast back box
- 302 stainless steel front plate
- Vandal resistant metal housing
- LED status indicators
- False code lockout
- Built-in buzzer can be silenced

# EIGHT ZONE ANNUNCIATOR

Limited Lifetime Warranty

## MODEL ZA-8N



- Independent zone annunciation, bypass switches and outputs
- Red LEDs indicate zone status
- Memory for each zone
- Remote annunciation capability
- Adjustable door ajar timer
- N/O, N/C and supervised zone loops
- Operates on 12VAC or VDC
- Two remote zone annunciators model **ZP-8AN** can be connected to unit
- Cabinet size: 10" W x 7" H x 2" D

# MOUNTING BOXES

Limited Lifetime Warranty

## MODEL 426



- Designed for installation of narrow remote stations (RP-1, RP-3, RP-24 and RP-25 only)
- Galvanized 18 gauge C.R.S.
- Size: 1-1/4" W x 3-5/8" L x 1-7/8" D

## MODEL 30203



- Suitable for wet locations
- Die cast zinc painted gray
- Three 0.5" hole plugs
- O.D.: 4-1/2" L x 2-3/4" W x 2" D
- I.D.: 4-5/16" L x 2-9/16" W x 1-7/8" D

## MODEL SMB-01



- Designed for single gang stations
- Powder coated 18 gauge steel
- N/O front and back tamper switches
- Size: 3" W x 4.5" L x 3" to 2.5" sloping front
- **SMB-01A** N/C tamper switches

## MODEL SMB-3



- Designed for door mullion mounting of narrow push plates
- Machined from 6061 aluminum
- Clear anodized finish
- Duronic finish available, model **SMB-3D**

# REMOTE STATION PLATES

Limited Lifetime Warranty

## MODEL RP-9 Single Gang Wall Plate



- Satin stainless steel
- 1/4" red and green LEDs
- Operates on 12 or 24VDC
- Current 13mA on each LED
- Custom screening available
- **RP-9L** 1/2" diameter LEDs

## MODEL RP-20 Single Gang Wall Plate



- Satin stainless steel
- "D" hole for ACE keyswitch
- Custom screening available
- **RP-21** Double "D" hole for Medeco keyswitch

## MODEL RP-26 Single Gang Wall Plate



- Satin stainless steel
- N/O red push button with guard ring
- Contacts rated 0.75A
- Custom screening available
- **RP-26A** N/C black push button with guard ring

## MODEL RP-28 Single Gang Wall Plate



- Satin stainless steel
- 1/4" diameter red LED
- Operates on 12 or 24VDC
- Current draw 13mA
- Custom screening available
- **RP-28L** 1/2" red LED
- **RP-29** 1/4" green LED

## MODEL RP-31 Single Gang Wall Plate



- Satin stainless steel
- Four 1/4" diameter red LEDs
- Operates on 12 or 24VDC
- Current 13mA on each LED
- Custom screening available
- **RP-32** Four, 1/4" green LEDs

## MODEL RP-44 Single Gang Wall Plate



- Satin stainless steel
- DPDT shunt switch
- Contacts rated 2A
- Custom screening available
- **RP-45** Two DPDT shunt switches

## MODEL MP-26



- Chrome plated brass
- N/O red push button with guard ring
- Size: 1-1/4" W x 2-1/4" L
- Contacts rated 0.75A
- **MP-26A** N/C black push button with guard ring

## MODEL MP-44



- Chrome plated brass
- DPDT shunt switch
- Latching action switch
- Size: 1-1/4" W x 2-1/4" L
- Contacts rated 2A
- Push button changes from black to orange when pushed

## MODEL WP-4



- Weather-proof station
- Self-closing cover
- 1/4" red and green LEDs
- Operates on 12/24VDC
- "D" hole for ACE keyswitch
- **WP-6** Double "D" hole for Medeco lock

# DELAYED EGRESS STATION

Limited Lifetime Warranty



## MODEL DE-1

### Delayed Egress Station

This micro-controller based unit will provide an effective means of locking an exit door while still providing egress during an emergency.

- Operates on 12/24VDC
- Two second nuisance delay
- Adjustable delay time (2-30 seconds)
- Key switch reset and re-lock
- SPDT instant contacts for remote alarm
- SPDT delayed contacts for unlocking door
- Replacement key available
- Countdown buzzer and flashing LED lamp during timing mode

# WALL PLATES

Limited Lifetime Warranty

## RP-22

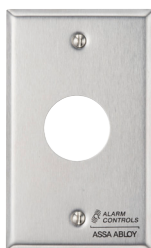
1-1/8" hole for  
SC628 sonalert



- Single gang satin stainless steel
- Available in all standard finishes

## RP-22E

1-1/4" hole for  
PA-200 buzzer



- Single gang satin stainless steel
- Available in all standard finishes

## RP-23

3/4" hole for PA-100 or  
PA-300 Piezo buzzers



- Single gang satin stainless steel
- Available in all standard finishes



# ELECTRONIC BUZZERS

Limited Lifetime Warranty

## PA100 Piezo Buzzer



- Buzzer mounts in 3/4" diameter hole
- Sound level 85dB @ 3 feet
- Voltage range 6 to 28VDC
- 6" red and black leads

## PA-200 Piezo Chime



- Piezo chime mounts in 1-1/4" diameter hole
- Sound level 85dB @ 3 feet
- Voltage range 6 to 28VDC
- Current: 95mA @ 12 VDC, 140mA @ 24VDC
- 6" red and black leads

## PA-300 Dual Tone Piezo Buzzer



- Continuous and pulsing tones
- Sound level 85dB @ 3 feet
- Buzzer mounts in 3/4" diameter hole
- Voltage range 6 to 28VDC
- 6" red, yellow and black leads

## MODEL SC628 Sonalert



- Buzzer mounts in 1-1/8" diameter hole
- Sound level 85dB @ 3 feet
- Voltage range 6 to 28VDC
- Current draw 3mA @ 6VDC, 18mA @ 28VDC
- Screw terminals

## MODEL LA32 Piezo Buzzer



- Buzzer mounts in 5/8" diameter hole
- Sound level 85dB @ 3 feet
- Operates on 12 VAC or VDC
- Current draw 5mA @ 12 VDC

## MODEL TS-34 Piezo Buzzer Station



- Buzzer is mounted on single gang stainless steel plate
- Sound level 85dB @ 3 feet
- Operates on 6 to 28VDC
- Other standard plate finishes are available
- Custom screening is available

## MODEL TS-34N Narrow Buzzer Station



- Buzzer is mounted on 1-3/4" stainless steel plate
- Sound level 85dB @ 3 feet
- Operates on 6 to 28VDC
- Other plate finishes available
- Custom screening available

## MODEL TS-41 Buzzer Station



- Buzzer is mounted on single gang stainless steel plate
- Sound level 85dB @ 3 feet
- Operates on 6 to 28VDC
- Other plate finishes available
- Custom screening available

## MODEL TS-42 Buzzer Station



- Buzzer is mounted on single gang stainless steel plate
- Sound level 85dB @ 3 feet
- Operates on 12/24VAC or VDC
- Custom screening available

# KEY SWITCHES

Limited Lifetime Warranty

## ACE KEY SWITCH MODELS



- **KA-105**, ON/OFF switch key removable in ON position, keyed different
- **KA-105A**, same as KA-105 except keyed alike
- **KA-106**, ON/OFF switch key removable OFF position, keyed different
- **KA-106A**, same as KA-106 except keyed alike
- **KA-107**, momentary switch key removable in OFF position, keyed different
- **KA-107A**, same as KA-107 except keyed alike
- **KA-107ANC**, same as KA-107A except key removable in ON position
- **KA-108**, ON/OFF switch key removable both positions, keyed different
- **KA-108A**, same as K-108 except keyed alike

## FLAT KEY SWITCH MODELS



- **KA-109**, single bitted flat key, ON/OFF keyswitch, key removable in ON or OFF position, keyed different
- **KA-109A**, same as KA-109 except keyed alike
- **KA-110**, single bitted flat key, momentary switch, key removable in OFF position
- **KA-110A**, same as KA-110 except keyed alike
- **KA-111**, double bitted flat key, removable in ON or OFF position SPDT switch, eight inch colored leads, keyed different
- **KA-111A**, same as KA-111 except keyed alike

Replacement keys available for keyed alike versions only

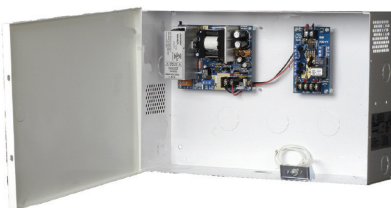
# POWER SUPPLIES FOR MAGNETIC LOCKS

Limited Lifetime Warranty

## MODEL APS-300

### UL Listed Access Control Power Supply

- Universal AC input 110 to 240 Volts
- 3 Amps at 12VDC, 1.5 Amps at 24VDC
- Sufficient power to support up to three magnetic locks or electric strikes, plus required exit devices
- Quality manufactured in the USA with Limited Lifetime Warranty
- Precise battery regulation for all sealed lead acid batteries
- Operates under brownout conditions
- Outputs are power limited
- Form C relay contacts, (SPDT), indicates AC power status
- Cabinet includes normally-open tamper switch and camlock



- Cabinet size: 14" L x 8-1/2" W x 3-1/2" D
- UL603, ULC-S318 (Canada)
- **PD4C** and **PDFT** also ULC-S533 listed (1987)
- Additional Models Available

**APS-3004C:** APS-300 with one PD4C, four output PTC protected distribution board

**APS-300FT:** APS-300 with one PDFT fire relay module

# We put the custom in customization.



Alarm Controls offers the most extensive range of door control switch customization in the industry. Additionally there are no minimum order quantities or long wait times like other manufacturers.



To learn more about our affordable, customized solutions visit  
[www.alarmcontrols.com](http://www.alarmcontrols.com) or call **800.645.5538**

**AlarmControls.com**

 **ALARM  
CONTROLS**

**ASSA ABLOY**

ASSA ABLOY, the global leader  
in door opening solutions



**ASSA ABLOY**

800.847.5625  
seclock.com

**seclock.com**

Patent pending and/or patent  
[www.assaabloydss.com/patents](http://www.assaabloydss.com/patents)

© 2019, Hanchett Entry Systems, Inc.,  
an ASSA ABLOY Group company.

AC-023-1118-SLD

ASSA ABLOY, the global leader  
in door opening solutions