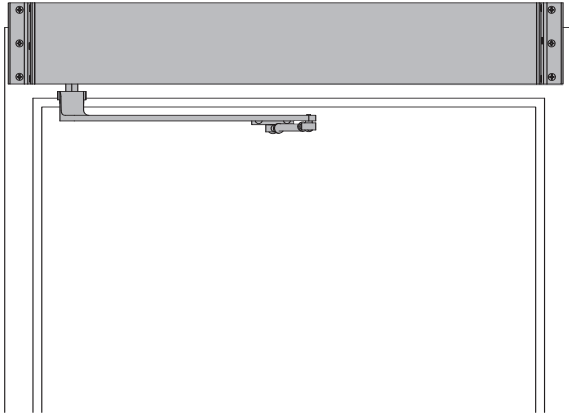


LCN 9540 SERIES

SINGLE DOOR, SURFACE MOUNT (PUSH) OFFSET PIVOT/BUTT HINGE



The 9540 SENIOR SWING by LCN is an ADA door operator that is a two-in-one swing door operator. SENIOR SWING operators when activated, opens doors automatically for wheelchair access, yet allows for manual operation for regular pedestrian traffic.

- ▶ **Push 'N Go** permits non-switch activation
- ▶ **Power Boost** provides additional latching force
- ▶ **Electromechanical unit with microprocessor control**
- ▶ **Digital keypad** for easy setup
- ▶ **Meets International Building Code requirements and ANSI A156.19**
- ▶ **UL approved for fire doors**

- ▶ 9540 series operator is shipped with motor gearbox, control box, regular arm, header, and mounting hardware. Actuators available separately, see page 121.
- ▶ Single door, surface mounted.
- ▶ Meets ADA requirements (power mode only).
- ▶ Handed product.
- ▶ 36" header length is standard. Specify length 33" to 49" max.
- ▶ Double door header available up to 98", specify other length 49" to 98" max. Consult factory regarding this option.
- ▶ Adjustable hold open period of 1 to 32 seconds in automatic or manual mode.

9540 Series is fully compliant with UL 325 & UL 1998 and meets the provisions of ANSI A156.19. The 9540 Series is UL listed for fire-rated applications. The 9540 Series also meets the provisions of the Americans with Disabilities Act.

MOUNTING						HANDING			FINISH			COVER			ARM FUNCTION			
●	○	○	○	○	○	●	○	○	○	○	○	○	○	○	○	○	○	○
SURFACE MOUNT SINGLE DOOR						STANDARD ANODIZED			METAL			STANDARD (SINGLE)			REGULAR (SINGLE)			
SURFACE MOUNT SIMULTANEOUS PAIR						CUSTOM ANODIZED						REGULAR (DOUBLE)			DOUBLE EGRESS (PUSH/PULL)			
SURFACE MOUNT INDEPENDENT PAIR						CUSTOM PAINT						OFFSET PIVOT ARM			CENTER PIVOT ARM			
CONCEALED SINGLE DOOR						HANDED												
CONCEALED SIMULTANEOUS PAIR						NON-HANDED												
CONCEALED INDEPENDENT PAIR																		

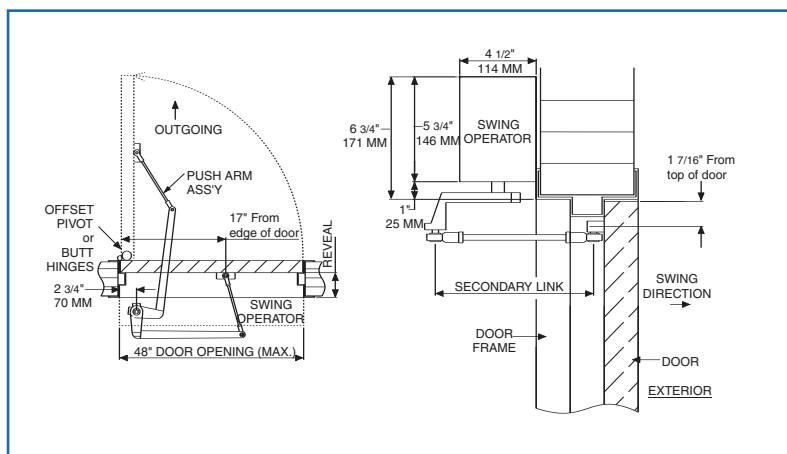
● AVAILABLE
○ NOT AVAILABLE

LCN 9540 SERIES

MOUNTING DETAILS

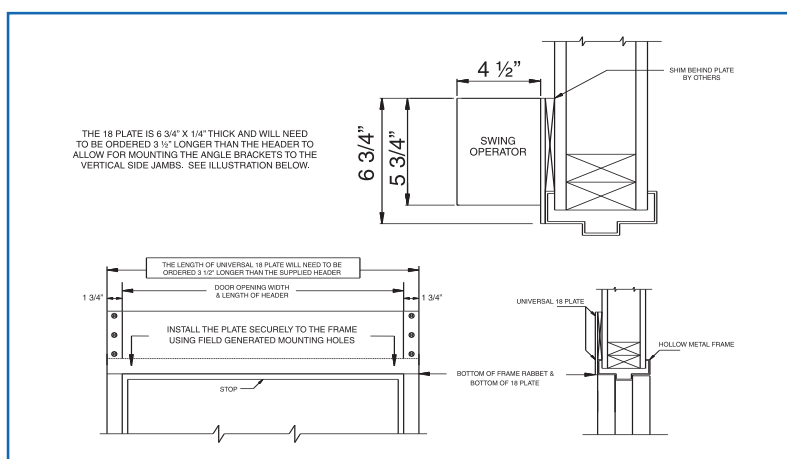
TOP JAMB SINGLE DOOR (OFFSET PIVOT/BUTT HINGE, CENTER PIVOT, PUSH) MOUNT

Consult factory for all balance door installations.



HOLLOW METAL FRAME

Suggested Installation



MAXIMUM OPENING

Template allows 90 degree power opening and 90 degree manual opening.

Special Templates

Customized installation templates or products may be available to solve unusual applications. Contact LCN for assistance.

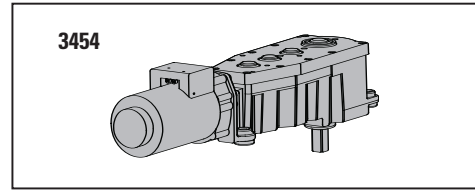
- ▶ **Butt Hinges** should not exceed 5" (127 mm) in width.
- ▶ **Reveal** for push installations should not exceed 10" (254 mm) for REGULAR ARM and 20" (508 mm) for LONG ARM.
- ▶ **Head Frame** minimum 1 3/4" (44 mm). Face frame 6 3/4" (171 mm) total operator clearance.
- ▶ **Top Rail** minimum 2 3/4" (70 mm).
- ▶ **Opening & Closing Time** are variable by adjustments to the electronic control box. Maximum hold open time adjustable up to approximately 32 seconds.
- ▶ **System Diagram** see "AUTOMATIC OPERATORS" section pages 52-54 for typical system wiring and page 55 for electrical data.
- ▶ Please consult your local SSC representative or LCN for assistance with specific installations and material requirements.

LCN 9540 SERIES

MOTOR GEARBOX

MOTOR GEARBOX (STANDARD FORCE) – SENIOR SWING, 9540-3454

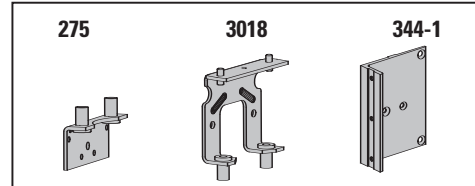
Driving mechanism for operator. Provides 15lbs opening force. Handed.



MOUNTING BRACKET

MOUNTING BRACKET – 2 3/4", 9540-275

Motor gearbox mounting bracket for 2 3/4" offset pivot or butt hinge installations. Front bracket.

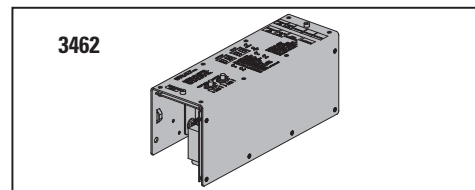


REAR MOUNT BRACKET, 9540-3018

Motor gearbox mounting bracket. Rear bracket.

ANGLED BRACKET, 9540-334-1

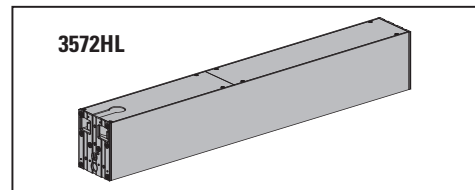
Mounting bracket for surface applications.



CONTROL BOXES

CONTROL BOX – SENIOR SWING, 9540-3462

Electronic controlling device for Senior Swing.



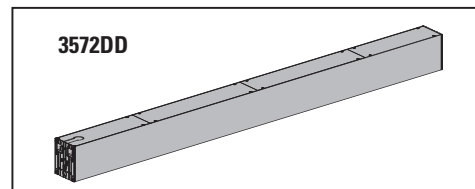
HEADERS

Header, 9540-3572HL

Standard, mounting header. Single door, single operator. Specify length 30" to 49" maximum.

Header, 9540-3572DD

Standard, mounting header. Double door, single operator. Specify length 49" to 98" maximum.



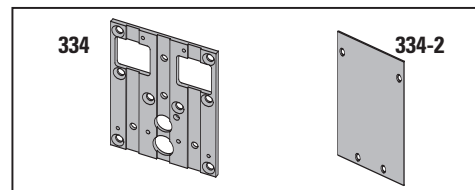
END CAPS

HEADER END CAPS, 9540-334

End cap with openings for wiring.

END DRESS PLATE, 9540-334-2

Metal finish end cap.



LCN 9540 SERIES

ARMS

REGULAR ARM ASSEMBLY, 9540-3077

Handed arm.

REGULAR LONG ARM ASSEMBLY, 9540-3077L

Handed arm.

MAIN ARM, 9540-77

Handed arm attaches to motor gearbox.

LINKAGE ASSEMBLY – 15", 9540-79

Threaded rod attaches to door. Extends from main arm.

LINKAGE ASSEMBLY – 32", 9540-79LR

Threaded long rod attaches to door. Extends from main arm. Used for reveal 10" to 20".

INSTALLATION ACCESSORIES

SPINDLE PLATE – 2 3/4", 9540-11A

Hides bottom of motor gearbox. Completes header box. Cutout allows for motor gearbox shaft. For 2 3/4" offset pivot or butt hinge installations.

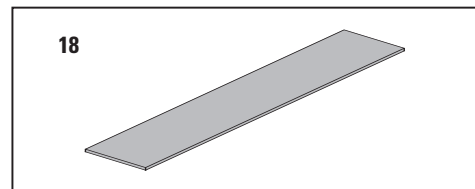
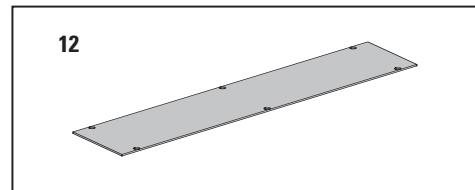
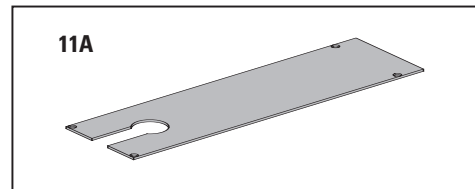
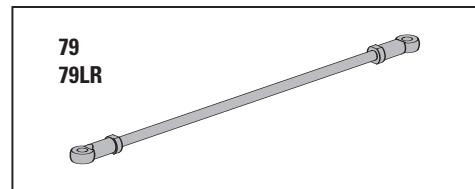
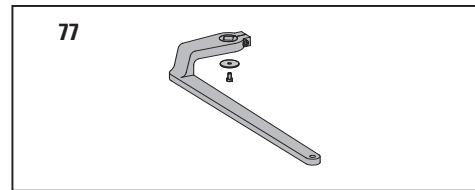
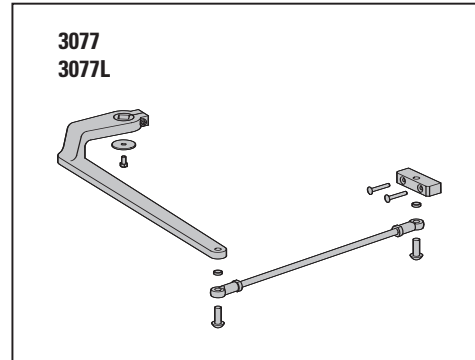
FILLER PLATE BLANK, 9540-12

Completes length of header box. (Specify Length)

MOUNTING PLATE, 9540-18

Optional mounting plate for standard hollow metal door frames. Specify length 33" to 98" maximum.

NOTE: The length of a universal 18 plate will need to be ordered 3 1/2" longer than the supplied header.

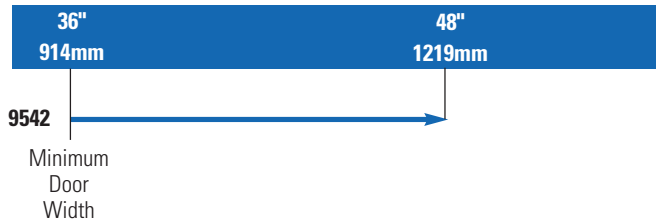


LCN 9540 SERIES

TABLE OF SIZES

→ Indicates recommended range of door width for operator.
Note: For all Senior Swing Series
Single Door - Width per leaf 36" minimum, 48" maximum

DOOR WIDTH



HOW-TO-ORDER 9540 SERIES OPERATORS

1. SPECIFY HAND

- RH
- LH

2. SPECIFY FINISH.

- Standard Anodized Finish _____
Aluminum or Dark Bronze

Operator will be shipped with:

- STANDARD MOTOR GEARBOX (SF)
 - STANDARD CONTROL BOX (SC)
 - 36" HEADER (36HL)
 - REGULAR ARM (3077)
 - 2 3/4" PIVOT POINT
 - WOOD and MACHINE SCREW PACK
- Unless options listed below are selected.*

OPERATOR OPTIONS

HEADER

- HL__ (Specify length 36" to 49")
- DD__ (Specify length 49" to 98")

MOUNTING PLATE

- Plate, ____ (Specify Length 30" to 98")

ARM

- Long Arm (3077L)

FINISH

SPECIAL TEMPLATE

- ST-_____