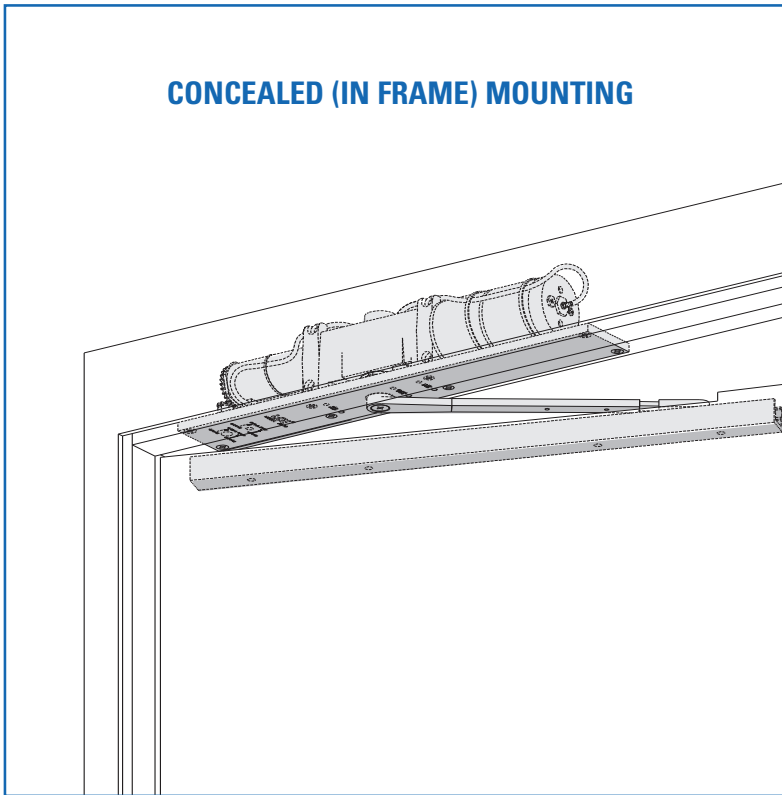


# LCN 2610 SERIES

## FEATURES

### CONCEALED (IN FRAME) MOUNTING



**The 2610 AUTO EQUALIZER™ is LCN's pneumatically powered MULTI-DOOR solution. This low-energy power operator provides easy access for people with disabilities, the elderly, or the frail. Designed primarily for manual opening applications that occasionally require automatic opening.**

- ▶ **Multi-Door Solution**
- ▶ **Utilizes a 10,000,000 Cycle Heavy Duty Door Closer**
- ▶ **Quiet, Efficient & Reliable**
- ▶ **Requires Control Boxes with integral compressor or control box using auxiliary air supply.**
- ▶ **No Guard Rails/Safety Mats Required**

*The 2610 Series is UL228 and meets the provisions of ANSI Standard A117.1, A156.19 and the Americans with Disabilities Act.*

- ▶ Ideal for multi-door applications since cost per door leaf decrease significantly as the number of door leaves increases.
- ▶ Standard 2610 series closer shipped with single lever (standard) arm, mounting/finish plate, standard track and wood and machine screw pack. See 2610 Series page 11 for options.
- ▶ Meets ADA requirements (power mode).
- ▶ Sized cylinders for interior doors to 4'0" and exterior doors to 3'0".
- ▶ Handed for right or left swinging doors.
- ▶ Requires additional system components. See CONTROL BOX pages 26-28 and ACTUATORS & ACCESSORIES, page 121.
- ▶ Standard or optional custom powder coated finish.
- ▶ Optional plated finish on arm, fasteners, and mounting/finish plate.

MOUNTING				FINISH		COVER		CYLINDER			*ARM FUNCTION						
TOP JAMB (PULL SIDE)	TOP JAMB (PUSH SIDE)	PARALLEL ARM	CONCEALED	POWDER COAT	PLATED	PLASTIC	METAL	NON-HANDED	NON-SIZED	ACCESSIBILITY*	POWER OPERATOR	HOLD-OPEN	STANDARD (SINGLE)	REGULAR (DOUBLE)	EXTRA DUTY ARM	CUSH-N-STOP	SPRING CUSH
○	○	○	●	●	●	○	●	○	○	♿	●	○	90°	○	○	○	○

●

AVAILABLE

○

NOT AVAILABLE

♿

Meets ADA requirements (power mode).

See individual series for maximum manual opening.

\*

# LCN 2610 SERIES

## CONCEALED MOUNTING

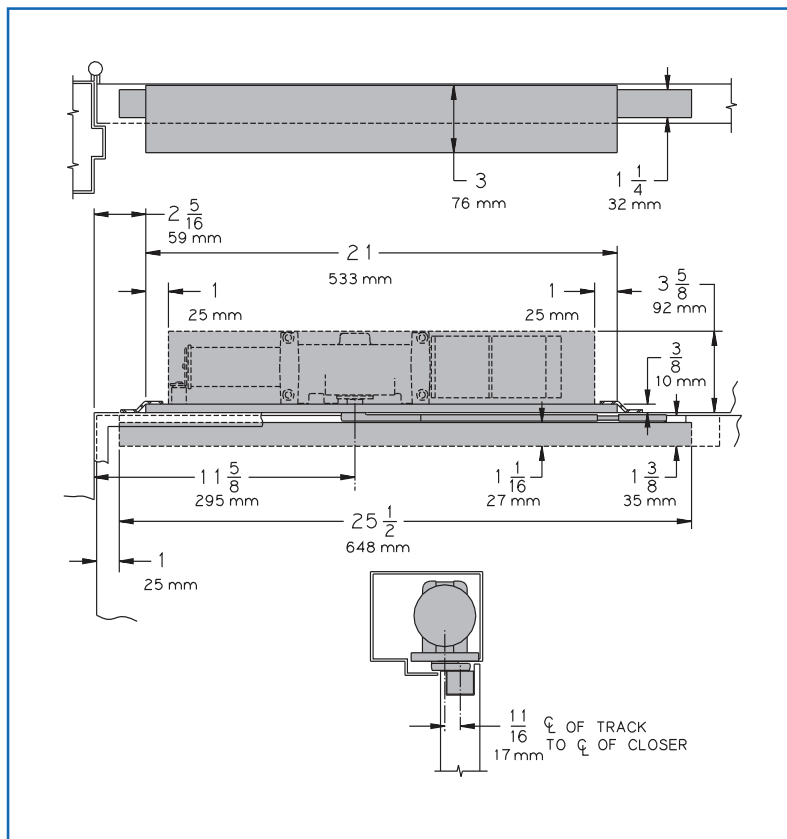
For interior or exterior doors.  
Single acting cylinder in head frame.  
Concealed arm and track in door top rail.

## MAXIMUM OPENING

Butt hinge template allows 90° power opening and 160° manual opening.

Please note that many track style door closers are capable of allowing 180° of door swing. Be aware that the majority of track style closers are at their weakest closing force in the 180 – 130° range. Consult factory for applications where exterior or large/heavy door must swing 180°.

**Consult factory for all pivot mounted installations.**



- ▶ **Butt Hinges** should not exceed 5" (127 mm) in width.
- ▶ **Auxiliary Stop is recommended.**
- ▶ **Head Frame** minimum 4" (102 mm) x 4" for hollow metal or aluminum tube construction.
- ▶ **Top Rail** 1 3/8" (35 mm) mortise required.  
5/16" (8 mm) cutout required at top of the door, push side only.
- ▶ **System Diagram** See "AUTOMATIC OPERATORS" section pages 7-8 for typical system wiring, and page 30 for electrical and pneumatic data for control boxes.

### Special Templates

Customized installation templates or products may be available to solve unusual applications. Contact LCN for assistance.

# LCN 2610 SERIES

## ACCESSORIES

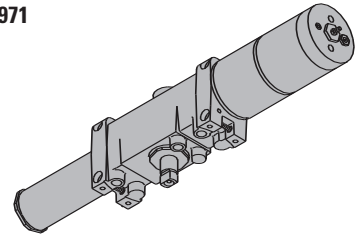
### CYLINDERS

#### CYLINDER ONLY, 2610-3971

Standard, handed, cast iron cylinder.

NOTE: For various applications see "Table of Sizes" page 14.

3971

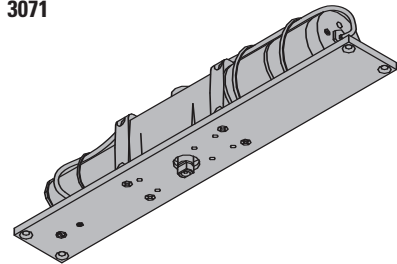


#### CYLINDER ASSEMBLY, 2610-3071

Standard, handed, cast iron cylinder and mounting plate.

NOTE: For various applications see "Table of Sizes" page 14.

3071



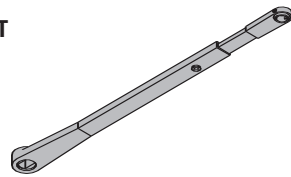
### ARMS

#### STANDARD ARM, 2610-3077T

Handed arm.

Track roller not included with arm.

3077T



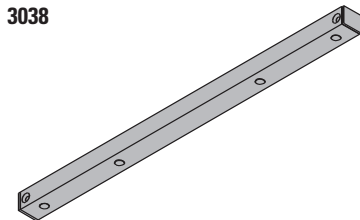
### TRACK

#### STANDARD TRACK, 2610-3038

Standard non-handed track.

Will not accept hold open clip or bumper assembly.

3038



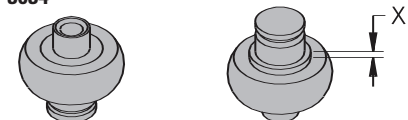
### INSTALLATION ACCESSORIES

#### TRACK ROLLER, 2610-3034

Quiet, low friction roller assembly.

Shoulder dimension "X" = 1/16" (1 mm).

3034



# LCN 2610 SERIES

## TABLE OF SIZES

Select closer based on width of door.  
Sized 2610 series cylinders available in size 3 or 4.  
Closing power of all 2610 Series closers may be increased 15%.

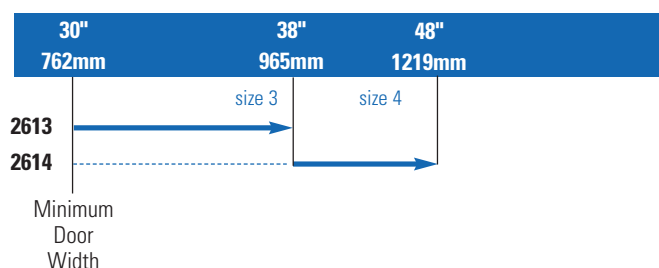
→ Indicates recommended range of door width for closer size.

NOTE: Minimum door width 30" (762 mm).

### EXTERIOR (and VESTIBULE) DOOR WIDTH



### INTERIOR DOOR WIDTH



## HOW-TO-ORDER 2610 SERIES CLOSERS

### 1. SELECT CYLINDER SIZE.

- ☐ 2613  
☐ 2614

### 2. SPECIFY HAND.

- ☐ RH  
☐ LH

### 3. SPECIFY FINISH.

- ☐ Standard Powder Coat \_\_\_\_\_  
Aluminum, Dark Bronze, Brass.

### Closer will be shipped with:

- STANDARD ARM,
  - TRACK ROLLER,
  - STANDARD TRACK,
  - WOOD and MACHINE SCREW PACK,
- unless options listed below are selected.

## CLOSER OPTIONS

### FINISH

- ☐ Custom Powder Coat (RAL) \_\_\_\_\_  
☐ Plated Finish, US \_\_\_\_\_

### SCREW PACK

- ☐ TB\*, Wood & Machine Screw (TBWMS)  
☐ TORX Machine Screw (TORX)  
☐ TB\* & TORX Machine Screw (TBTRX)

\*Specify door thickness if other than 1 3/4".

### SPECIAL TEMPLATE

- ☐ ST- \_\_\_\_\_