

# DynaLock Corp.

Electric Security Hardware

705 Emmett Street • P.O. Box 9470 • Forestville, CT 06011-9470 • Phone: (860)582-4761 • Fax: (860)585-0338  
E-mail: dynalock.corp@snet.net • Website: www.dynalock.com

## ***MOUNTING INSTRUCTIONS*** **SERIES 2268 ELECTROMAGNETIC LOCK** **FOR A SINGLE OUTSWING DOOR**

### ***PLEASE READ BEFORE INSTALLATION***

Familiarize yourself with the door and frame conditions prior to installation. The lock must rigidly mount to the underside of the frame header. The armature is designed to pivot slightly to compensate for reasonable misalignment.

Armature mounting hardware is supplied for a standard 1-3/4" door. For thicker doors order the following special armature hardware kits:

Part #300687 for 2" thick doors.

Part #300688 for 2-1/4" thick doors.

### **HANDLING**

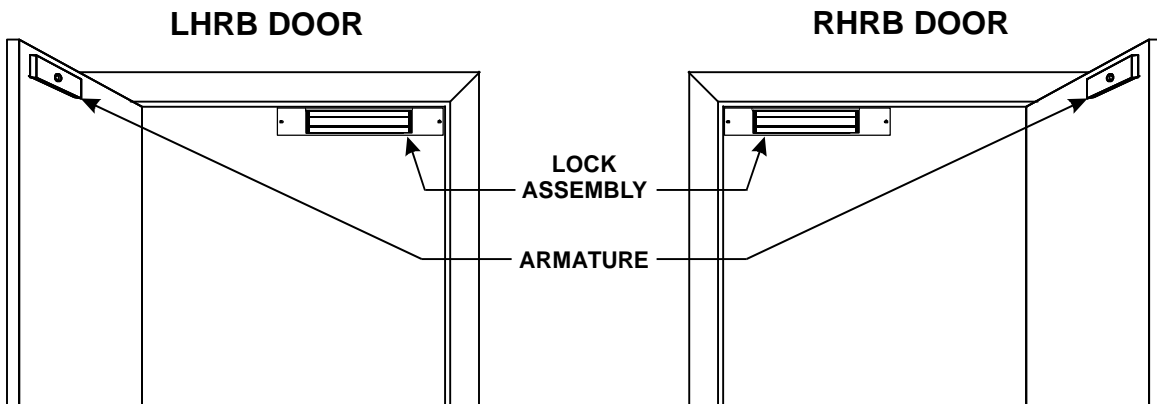
The electromagnetic lock and armature are ruggedly constructed and designed to provide years of trouble-free service. Care must be taken during installation and use to keep the lock face free from dirt, rust burrs, paint or any other obstruction which may interfere with the lock and armature making good contact.

### **MAINTENANCE**

The lock assembly and armature have been plated for maximum corrosion resistance. To ensure peak lock performance, clean the lock and armature faces with a mild detergent and a clean soft cloth, then apply a light coat of WD40 to protect these surfaces. This need only be done when dirt build-up is noticed.

### **GENERAL MOUNTING INFORMATION**

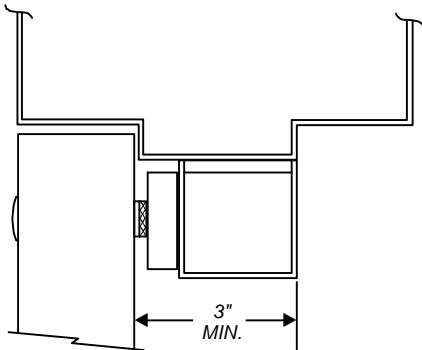
The illustrations below depict typical installations of the Model #2268 Lock on single-outswing doors. The lock assembly must be surface mounted to the underside of the frame header with the armature affixed to the inside face of the door as shown.



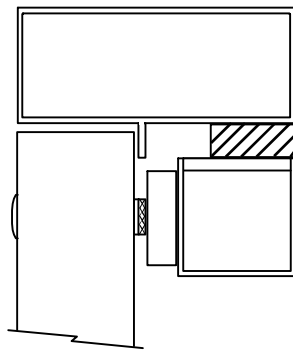
# MOUNTING PREPARATION

## 1. SURVEY THE INSTALLATION

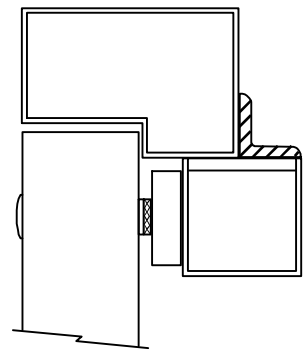
Inspect the door frame and determine if an angle bracket or filler plate will be required for installation. The lock will require a 3" wide header stop for a suitable mounting surface.



NORMAL MOUNTING



\*FILLER PLATE REQUIRED



\*ANGLE BRACKET REQUIRED

\*These items are available from DynaLock

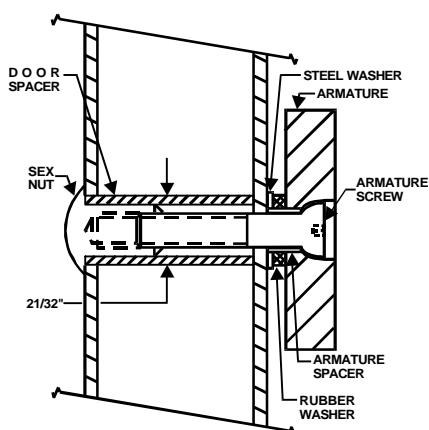
## 2. PREPARE THE FRAME FOR MOUNTING THE LOCK ASSEMBLY

Determine the hand of the door - ( LHRB or RHRB ) and look at the template edge for proper positioning of the template.

- Fold the template on the dotted line to form a 90 degree angle.
- With the door in the closed and latched position, place the template against the header and door with one edge of the template against the vertical lock jamb and tape in place.
- Transfer all hole locations to both the door and header with a center punch.
- Remove the template from the door.

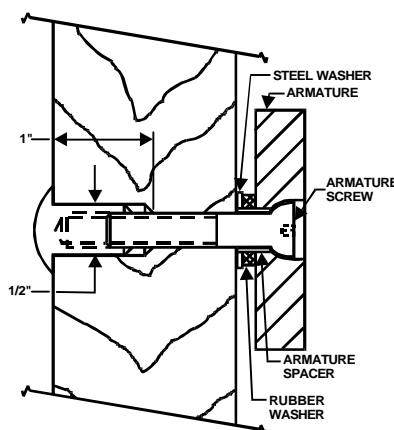
## 3. PREPARE THE DOOR FOR MOUNTING THE ARMATURE

From the three illustrations below, select the one that resembles your door type and follow the instructions for drilling the armature screw hole. Drill two (2) 1/4" dia. holes 9/16" deep at the anti-spin pin locations (See Template).



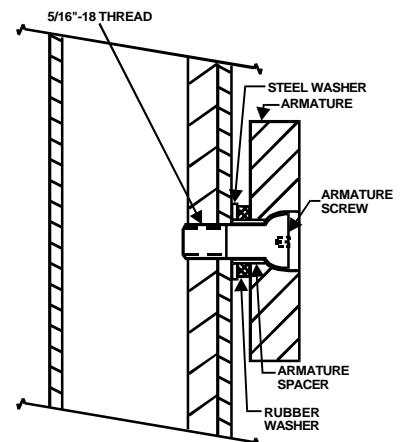
**GLASS & ALUMINUM  
OR HOLLOW METAL DOOR**

Drill an 11/32" diameter hole through door. From, sex nut side only enlarge the 11/32" hole to 21/32" diameter.



**SOLID CORE DOOR**

Drill an 11/32" diameter hole through door. From, sex nut side only drill 1/2" diameter hole to 1" depth.



**REINFORCED DOOR**

Drill a 17/64" diameter hole and tap for 5/16"-18 thread.

# INSTALLATION

## 4. MOUNT THE ARMATURE TO THE DOOR

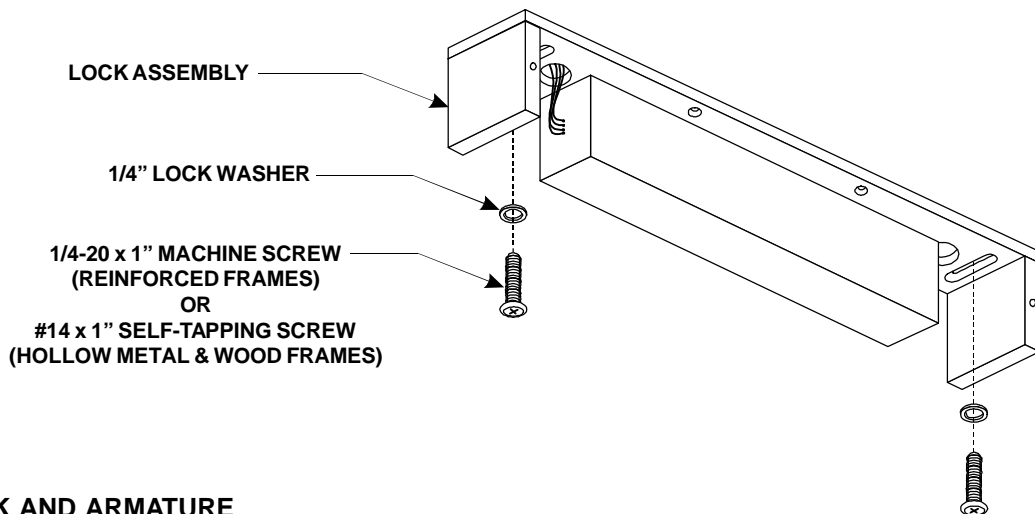
Locate the two 3/16" dia. anti-spin pins from the hardware kit. Place the armature face-down on a soft surface ( i.e. the shipping carton ) and drive the anti-spin pins into the holes provided. Refer to Note #3 illustrations to select the correct mounting hardware and mount the armature. Firmly tighten the armature mounting screw with a 3/16" hex wrench. **Failure to properly secure armature to door could result in serious injury or security breach.**

## 5. PREPARE THE HEADER FOR LOCK MOUNTING

For reinforced metal door frames refer to the Template and drill and tap for two #1/4-20 mounting screws and drill one 11/16" dia. wiring hole as required. For hollow metal and wood door frames drill two 3/16" dia. mounting screw holes 1" deep and one 11/16" dia. wiring hole as required.

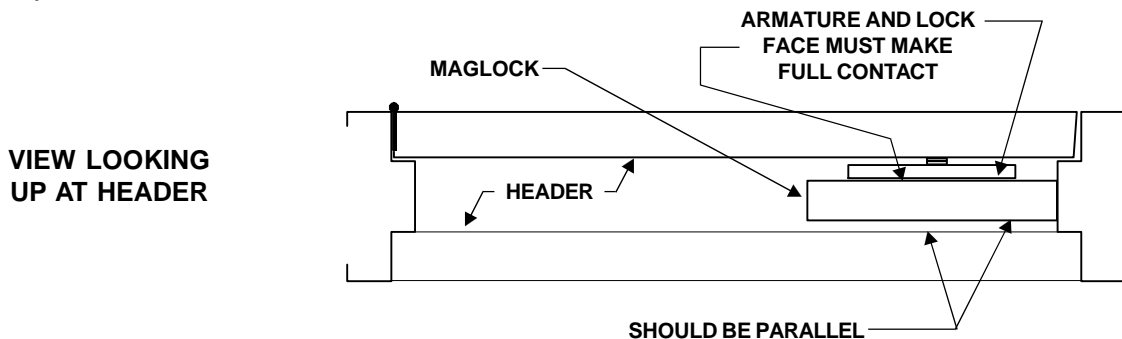
## 6. MOUNT THE LOCK ASSEMBLY TO THE FRAME HEADER

Remove the Housing Cover from the Lock Assembly by removing the four cover screws (see Exploded View - page 4). Using the correct mounting hardware for the frame material secure the lock assembly to the header. Tighten the screws just snug enough for final adjustment.



## 7. ALIGN THE LOCK AND ARMATURE

Close the latch the door. Verify the lock face and armature are making full contact for the entire length. If any adjustment is required gently tap the baseplate with a soft mallet until full contact is achieved. Firmly tighten the two adjustment screws, then drive the two #10 x 1" tek screws through the remaining holes in the baseplate to secure the adjustment.



## 8. COMPLETION

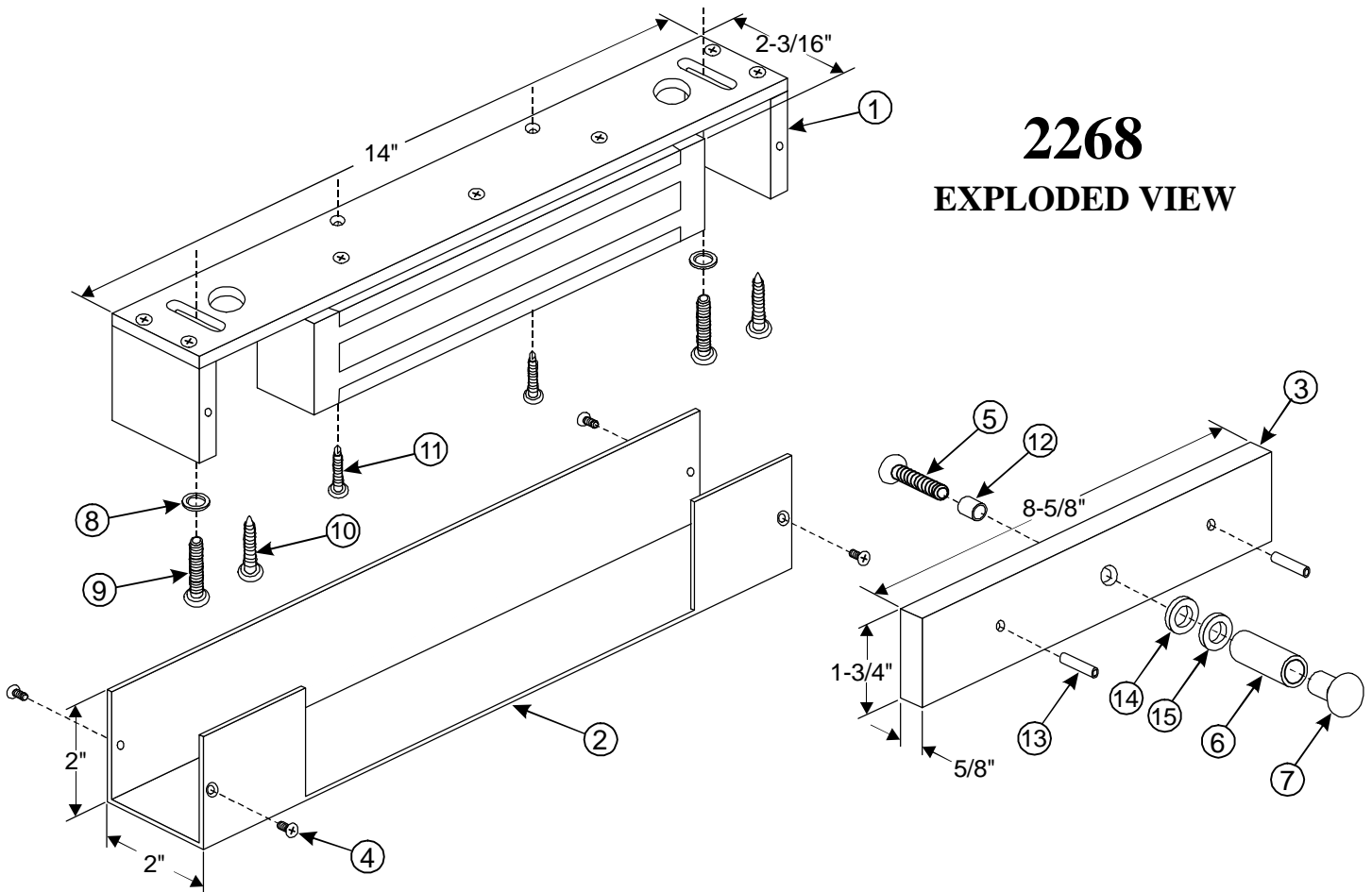
The mechanical installation is now complete. Refer to separate 2268 Wiring Instructions for electrical hook-up information (Form #2268-002).

### 2268 BILL OF MATERIAL

- |   |   |
|---|---|
| 1 - Mounting Instructions                           | 1 - Hardware Kit consisting of:                 |
| 1 - Wiring Instructions                             | 2 - 1/4-20x1" phillips pan head machine screws  |
| 1 - Electromagnetic Lock                            | 2 - #14x1" phillips pan head sheet metal screws |
| 1 - Armature  | 2 - #10x1" phillips pan head tek screws         |
| 1 - Template  | 2 - 1/4" Lock Washers                           |
| 1 - Armature Mounting Screw assembly consisting of: | 2 - 3/16"x3/4"L Anti-spin Pins                  |
| 1 - 5/16-18x1-3/4" hex flat head machine screw      | 1 - 1/4" Armature Spacer                        |
| 1 - Door Spacer                                     | 1 - Rubber Washer                               |
| 1 - Sex Nut   | 1 - Flat Steel Washer                           |

### TOOLS REQUIRED

- 1 - Electric Drill
  - 1 - #2 Phillips Screw Driver
  - 1 - Soft Faced Mallet
  - 1 - Hammer
  - 1 - Center Punch
  - 1 - Pencil & Tape
  - 1 - 3/16" Hex Wrench
- The Following Drill Bits:
- |        |        |
|--------|--------|
| 11/16" | 17/64" |
| 21/32" | 1/4"   |
| 1/2"   | 3/16"  |
| 11/32" | 1/8"   |



#### DESCRIPTION

1. Lock Assembly
2. Housing Cover
3. Armature
4. Housing Cover Screw
5. Armature Mtg. Screw
6. Door Spacer
7. Sex Nut

#### PART NO.

- Consult Factory  
 #300964  
 #300968  
 #300608  
 } Sub-Assembly  
 Part #300628

#### DESCRIPTION

8. 1/4" Ext. Tooth Lock Washer
9. 1/4-20x1" Mounting Screw
10. #14x1" Mounting Screw
11. #10x1" Mounting Screw
12. Armature Spacer
13. Anti-spin Pin
14. Rubber Washer
15. Flat Steel Washer

#### PART NO.

} Hardware Kit  
 Part #300974