

2100 Series

Magnapull Heavy Duty

Magnetic Contact with Pull-Apart Cords

Models: 2105-A, 2107-A

Installation Instructions

Mounting

Mount the magnet section on the object to be protected. Once the magnet is installed, place the cover over the magnet and screw it to the surface. Use #10 screws to secure both units. Mount the cord section with clamps so the cord will pull straight out of the magnet housing when it reaches the end of the cord. Make sure it has the correct slack and loop so it will not hang up on anything as the protected object is moved.

Alternate mounting

Loop the cord through the object being protected or through a stationary object.

CAUTION If the alternate mounting is used, make sure the alarm owner is warned that they could break the pull-apart if they do not release it before moving the protected object.

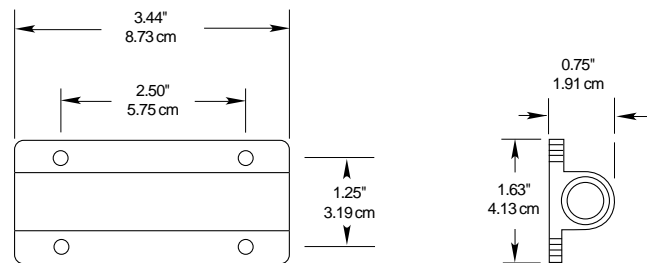
Lead functions

Form A Model 2105-A, use black leads

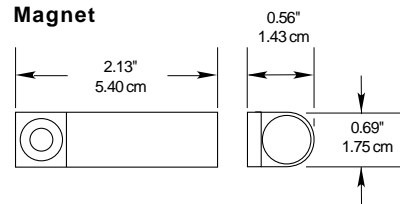
Form C Model 2107-A

Lead color	Function
Black	Common
White	Closed Loop (NO)
Red	Open Loop (NC)

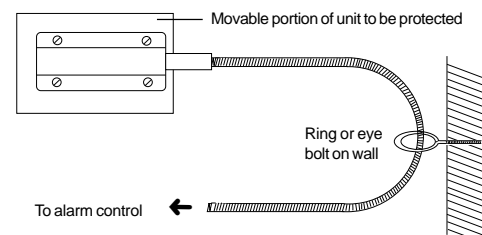
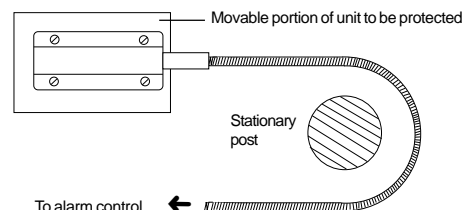
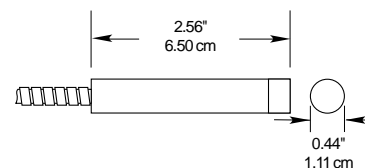
Magnet cover



Magnet



Switch



Ordering information

Part Number	Loop Type	Electrical Configuration	Color Choices	Lead Type
2105-A	Closed	NO	Off-white, gray, or mahogany brown	3' stainless steel armored cable
2107-A	Open or Closed	SPDT	Gray	3' stainless steel armored cable

European Union Specification: 48 V AC/DC max., 0.5 A

Form A: 2105-A

Voltage: 100 V AC/DC max.

Current: 0.5 A max.

Power: 7.5 W max.

Form C: 2107-A

Voltage: 100 V AC/DC max.

Current: 0.3 A max.

Power: 3.0 W max.



**GE Infrastructure
Security**
12345 SW Leveton Drive
Tualatin, OR 97062
503-692-4052
USA & Canada: 800-547-2556

Tech Support
800-648-7424
FaxBack: 800-483-2495

www.GESecurity.com

PK-0732 Rev D 06/04