

1300 Series

Mortise Electric Deadbolt Lock

- *Accepts DC or AC Voltage*
- *Complete array of options*
- *Compact Design*
- *Lifetime Warranty*



Description

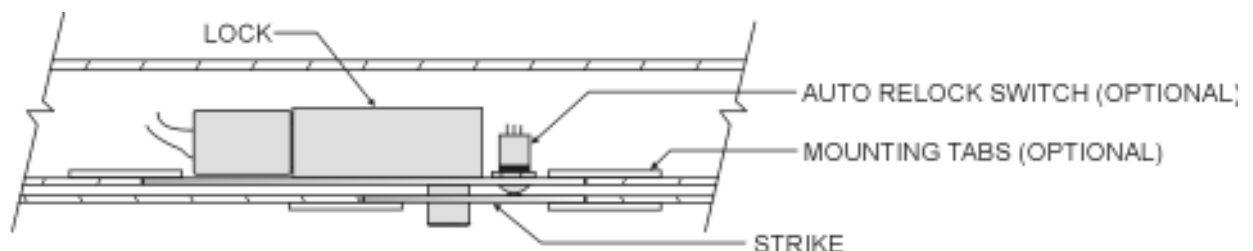
The 1300 mortise electric deadbolt is designed for concealed mounting in areas where conventional locks do not fit. A mounting depth of only 1-5/8" and the ability to install in door or frame regardless of position, make the 1300 the obvious choice for difficult installations. The lock is silent, rated continuous duty, and fail-safe. Not recommended on wood door/frame installations or to be used with panic devices.

Models

1300-12 ELECTRIC DEADBOLT, 12VAC/VDC
1300-24 ELECTRIC DEADBOLT, 24VAC/VDC

Standard Features

- **Fail Safe:** Bolt extends only when power is applied and lock is energized. Interruption of power causes the bolt to automatically spring retract.
- **Narrow 1⁵/₈" Backset:** Compact design allows for installation where most deadbolt locks cannot.
- **Versatile Mounting:** Mounts in header or lock jamb plus top, vertical, or bottom door stile when power is transferred to the door.
- **Status Monitoring:** Optional built-in door and/or bolt position status reporting with a choice of concealed or visible sensors.
- **Silent:** No buzzing when energized.
- **Continuous Duty:** Heavy duty low voltage solenoid is designed to withstand continuous duty operation. Built-in rectifier allows AC or DC voltage input.
- **Circuit Board:** Built-in to simplify wiring and option selection.
- **Lifetime Warranty**



1300 Series Electric Deadbolt Lock

Options

ARSB AUTO-RELOCK SWITCH - *Ball Type*. Switch that insures the deadbolt will only project when the door is in the closed position.

ARSM AUTO-RELOCK SWITCH - *Concealed*. Switch with similar function as ARSB. Not recommended for steel doors.

BPS BOLT POSITION SWITCH - SPDT switch signals a bolt extended or bolt retracted condition. Popular uses include door interlocks and synchronizing bolt position with door location when using automatic door equipment.

DPSB DOOR POSITION SWITCH - *Ball Type*. SPDT switch signals a door closed/door ajar condition to a remote location. Useful for door interlocking.

DPSM DOOR POSITION SWITCH - *Concealed*. SPDT proximity type switch similar function as DPSB. Not recommended for steel doors.

MB MOUNTING BRACKET - 1 set (4 pieces) of predrilled mounting tabs to facilitate lock mounting when cutting into an existing metal frame.

Specifications

MECHANICAL

Lock Front: Size 1½" x 8" x 1/8"
Material Aluminum
Strike: Size 1-½" x 4" x 1/8"
Material Aluminum
Bolt: Size ¾" Diameter x ¾" Throw
Material Stainless Steel
Finish: US28 Satin Aluminum with clear anodize
Mounting Hardware: (8) #10 PNHD SST SMS 1" Long
Weight: 2 Lbs.

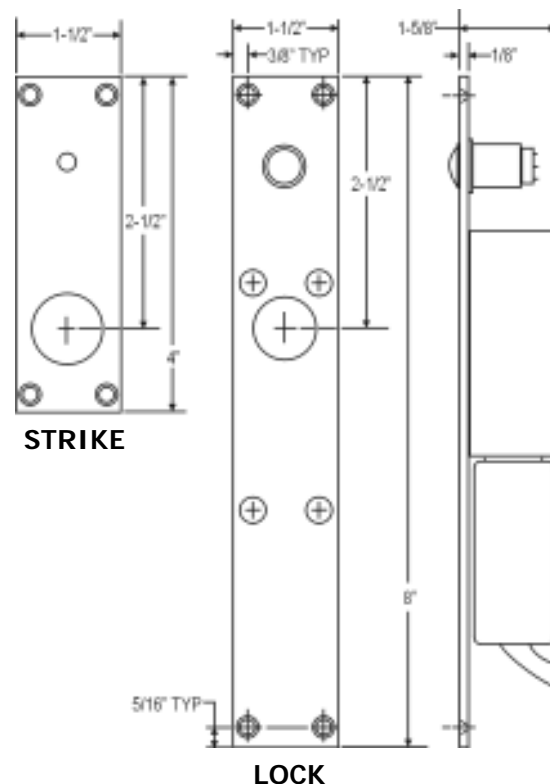
ELECTRICAL

Solenoid: Voltage 12VDC/VAC or 24VDC/VAC
(Specify when ordering)
Current 0.85A @ 12V
0.45A @ 24V

Continuous Duty

Optional Monitoring Contacts:

BPS	SPDT	4A @ 24V
DPSB	SPDT	4A @ 24V
DPSM	SPDT	0.25A @ 24V



***NOT RECOMMENDED FOR INSTALLATION IN WOOD DOORS/FRAMES.**

DYNALOCK CORPORATION
705 EMMETT STREET / PO BOX 2728
BRISTOL, CT 06011-2728
PHONE: 877-DYNALOCK / FAX: 860-585-0338
E-MAIL: INFO@DYNALOCK.COM
WEBSITE: WWW.DYNALOCK.COM

Featuring

DynaLife[®]
Lifetime Warranty