



ACCESS CONTROL PUSH BUTTON USER'S GUIDE

REQUEST TO EXIT PUSH BUTTON SWITCH

1 Description

The Access Control Push Button (10ACPBSS1 / 10ACPBSSL) is an illuminated momentary push button with stainless steel wall plate for Request to Exit security door applications.

2 Precautions



- ❑ Shut off all power before attempting any wiring procedures.
- ❑ Constantly be aware of pedestrian traffic around the area.
- ❑ Always stop pedestrian traffic through the doorway when performing tests that may result in unexpected reactions by the door.
- ❑ Always check placement of all wiring before powering up to insure that moving door parts will not catch any wires and cause damage to equipment.
- ❑ Ensure compliance with all applicable safety standards (i.e. ANSI A156.10 / 19) upon completion of installation.
- ❑ DO NOT attempt any internal repair of the product. All repairs and/or component replacements must be performed by BEA, Inc. Unauthorized disassembly or repair:
 1. May jeopardize personal safety and may expose one to the risk of electrical shock.
 2. May adversely affect the safe and reliable performance of the product resulting in a voided warranty.



10ACPBSS1

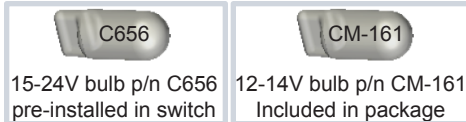


10ACPBSSL

	DESCRIPTION	SPECIFICATION
SWITCH	VOLTAGE MAX.	125/250 VAC
	CURRENT MAX.	10 A
	POWER MAX.	373 W
	ELECTRICAL CONFIG.	SPDT
HIGH VOLT BULB p/n C656	INPUT VOLTAGE	15-24 VAC/VDC
	CURRENT	0.06 A
LOW VOLT BULB p/n CM-161	INPUT VOLTAGE	12-14 VAC/VDC
	CURRENT	0.19 A

3 Installation

SINGLE-GANG ELECTRICAL BOX

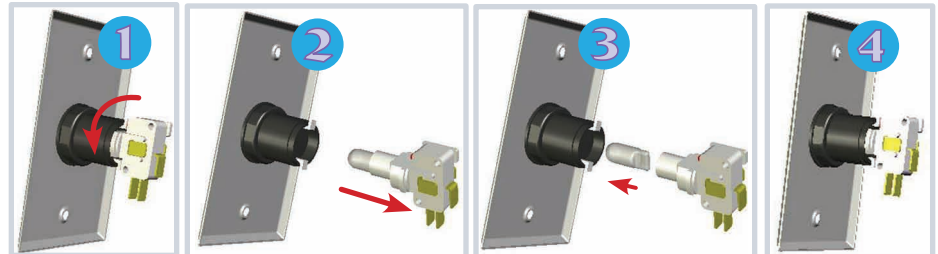


A. Ensure bulb is correct voltage for your application. When using input voltage of 12-14V, replace 15-24V bulb p/n C656 with 12-14V bulb p/n CM-161 as follows:

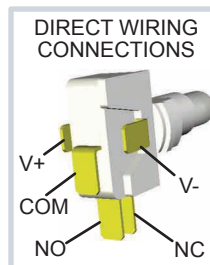
- 1 Turn switch counterclockwise 1/8 turn to release from Push Button.
- 2 Separate from Push Button.
- 3 Remove 15-24V bulb p/n C656 and replace with 12-14V bulb p/n CM-161.
- 4 Re-assemble components in reverse order.

- B. Make electrical connections with wires provided or directly to switch terminals.
- C. Fasten to electrical box using supplied mounting screws.

WARNING: SUPPLYING THE 12-14 VOLT BULB, P/N CM-161, WITH 15 VOLTS OR MORE WILL DAMAGE SWITCH BEYOND REPAIR.



WIRE COLORS		
	COLOR	DESCRIPTION
BULB	RED	V +
	BLACK	V -
SWITCH	WHITE	COM
	YELLOW	NC
	GREEN	NO



INCLUDED HARDWARE		
QTY	DESCRIPTION	ITEM
2	Standard Mounting Screw	
2	Tamper Proof Mounting Screw	
1	12-14V Bulb p/n CM-161	

4 Company Contact



Do not leave problems unresolved. If a satisfactory solution cannot be achieved after troubleshooting a problem, please call BEA, Inc. If you must wait for the following workday to call BEA, leave the door inoperable until satisfactory repairs can be made. Never sacrifice safe operations for an incomplete solution.

The following numbers can be called 24 / 7. For more information, visit www.beasensors.com.

8 am - 5 pm EST: 1-800-523-2462		8 am - 5 pm PST: 1- 877-232-9378	
After Normal Business Hours			
West / Mexico 1-888-419-2564	Central 1-800-407-4545	AK, MI, WI, TX, Canada 1-866-836-1863	East 1-866-249-7937