

NOTES: SEE MASTER SHEET #10001 FOR SUGGESTED REINFORCING

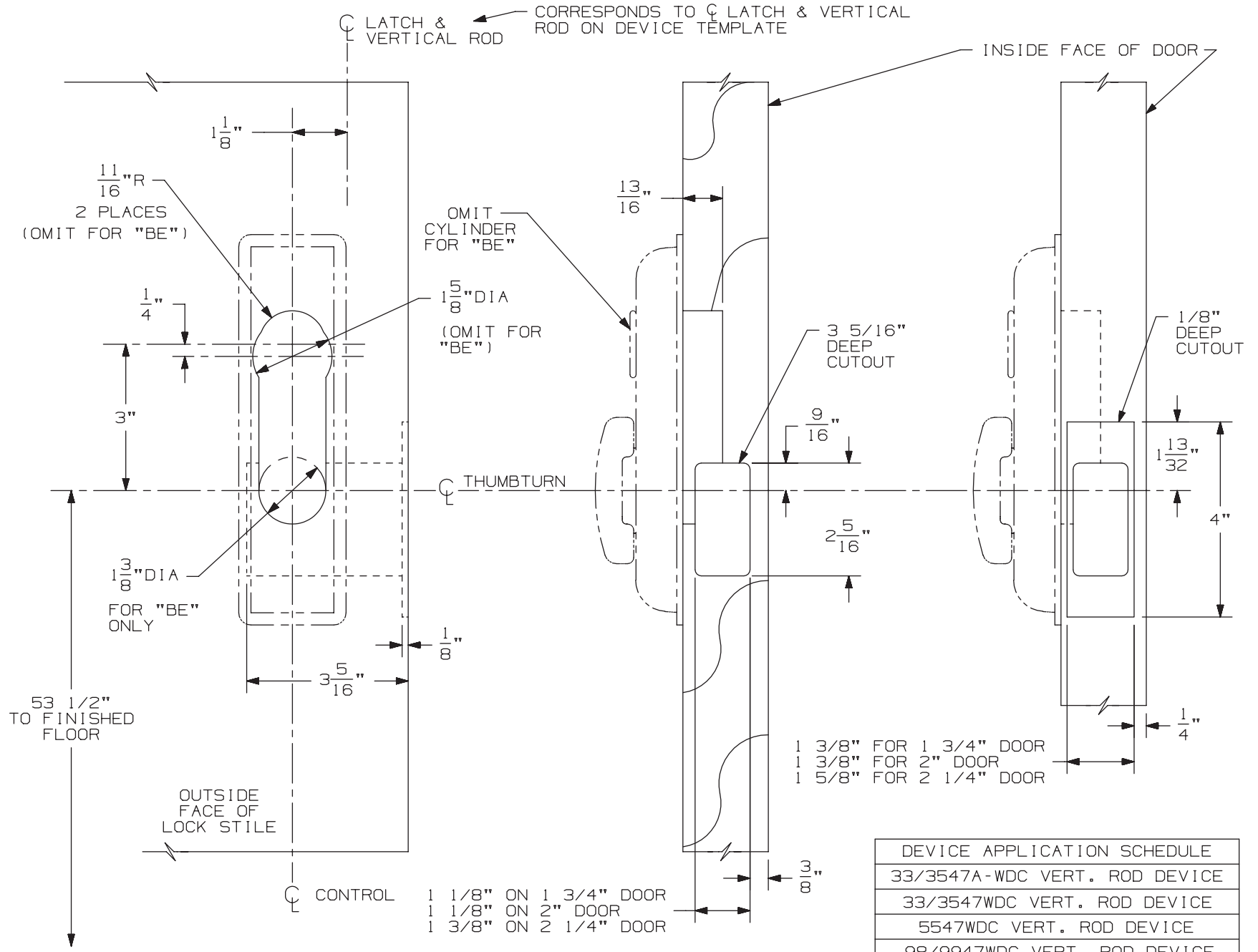
**376-T & 376-T-BE Control  
(Wood Door)**

TEMPLATE  
NUMBER:

**W40143\_a**

DATE:  
05-29-13

**VON DUPRIN®**



NOTE: MOUNTING HOLES TO BE PREPARED AT INSTALLATION ON DOOR.

LHR SHOWN  
RHR OPPOSITE

FOR CUTOUTS ON INSIDE FACE OF DOOR  
SEE DEVICE TEMPLATE.

DEVICE APPLICATION SCHEDULE
33/3547A-WDC VERT. ROD DEVICE
33/3547WDC VERT. ROD DEVICE
5547WDC VERT. ROD DEVICE
98/9947WDC VERT. ROD DEVICE